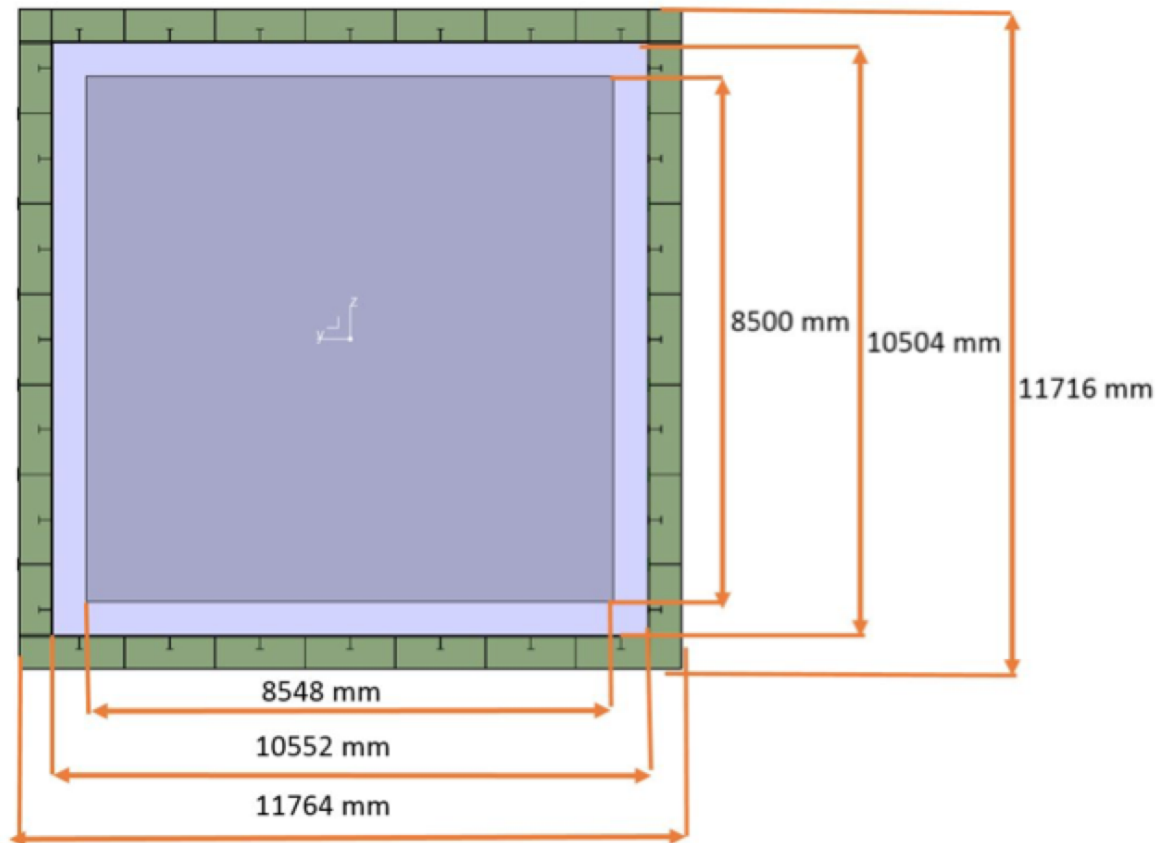


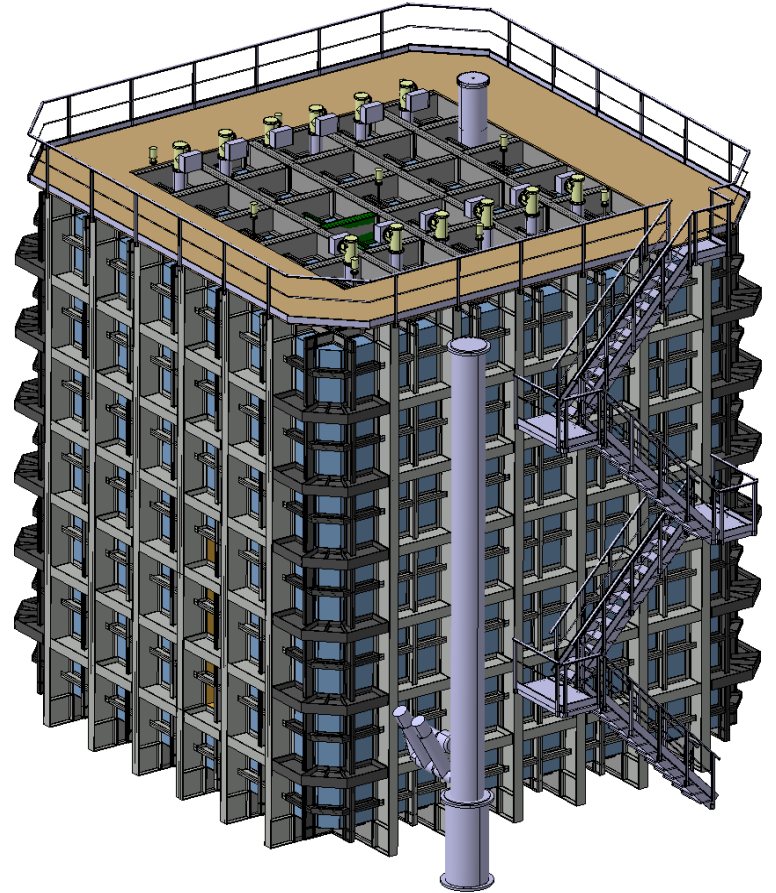
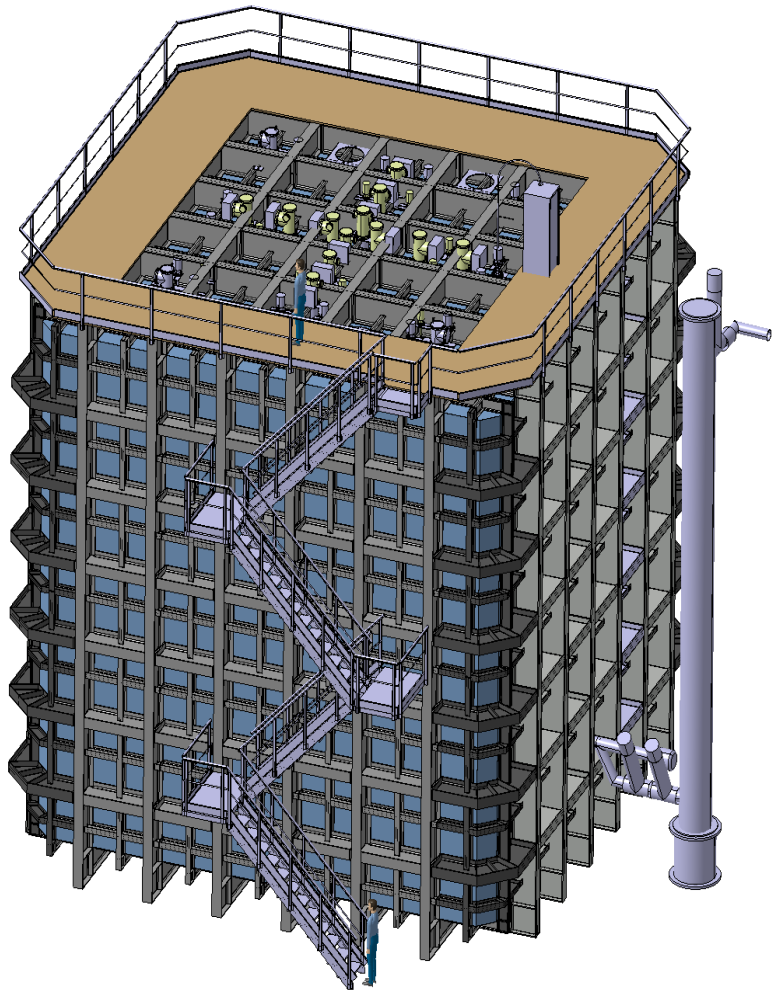
# EHN1 cryostats

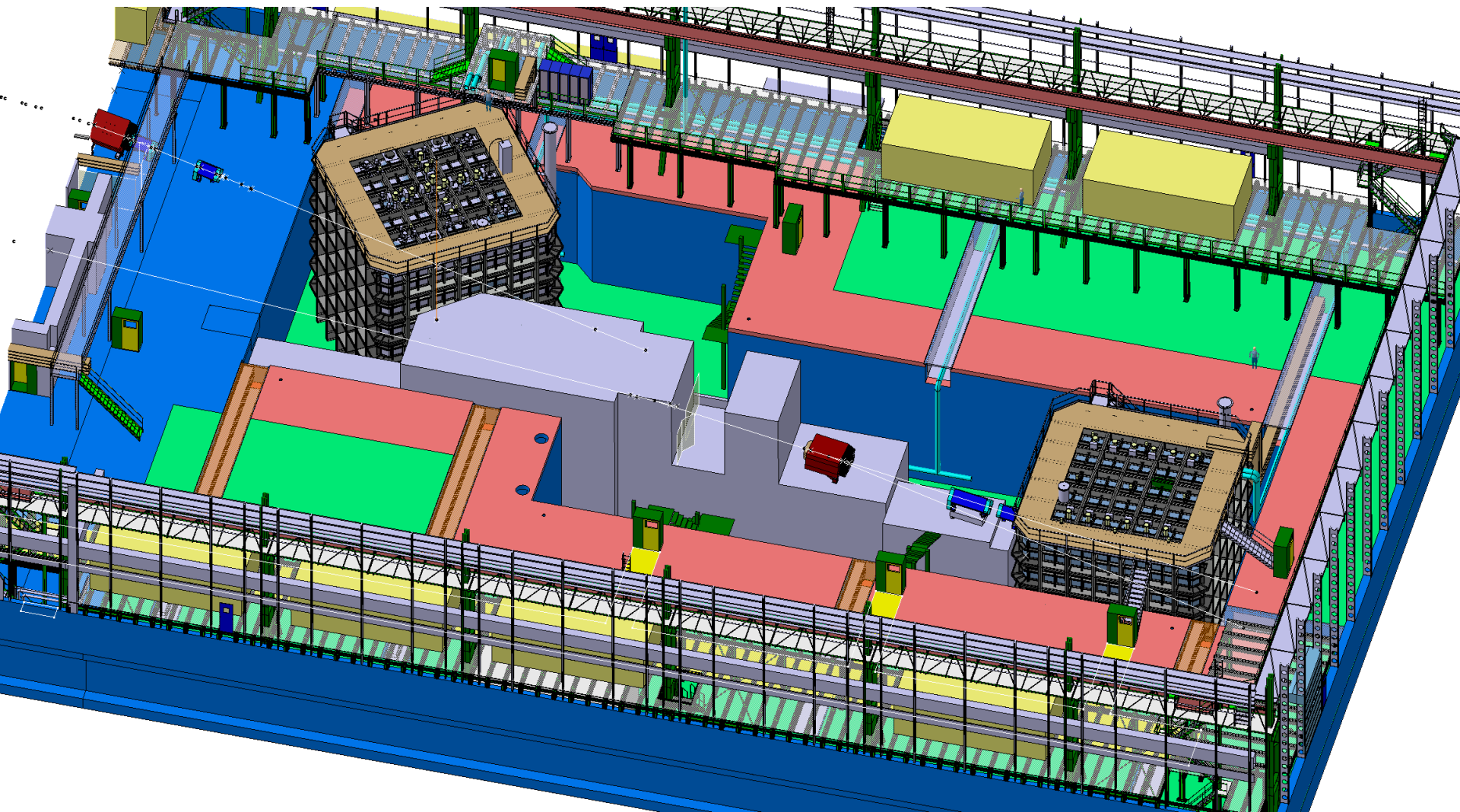
24/9/2015

# 2 cryostats: Wa105 and protoDUNE

- 2 identical cryostats, with different penetrations







# Warm FE structure

Specification, layout, design: <https://edms.cern.ch/document/1531438>

3D CAD model : <https://edms.cern.ch/document/1531439>

- Design : finished
- Structural analysis done, missing final report
- The structure has been given to an external firm for verification (final report in 3 weeks)
- Open issue to clarify: 6mm SS plate, bolted connections, interface to the floor and grounding

Next issue production drawings by end of October, then the tendering can start. Some modification sin the drawings might become necessary for handling all penetrations

# GTT cold structure

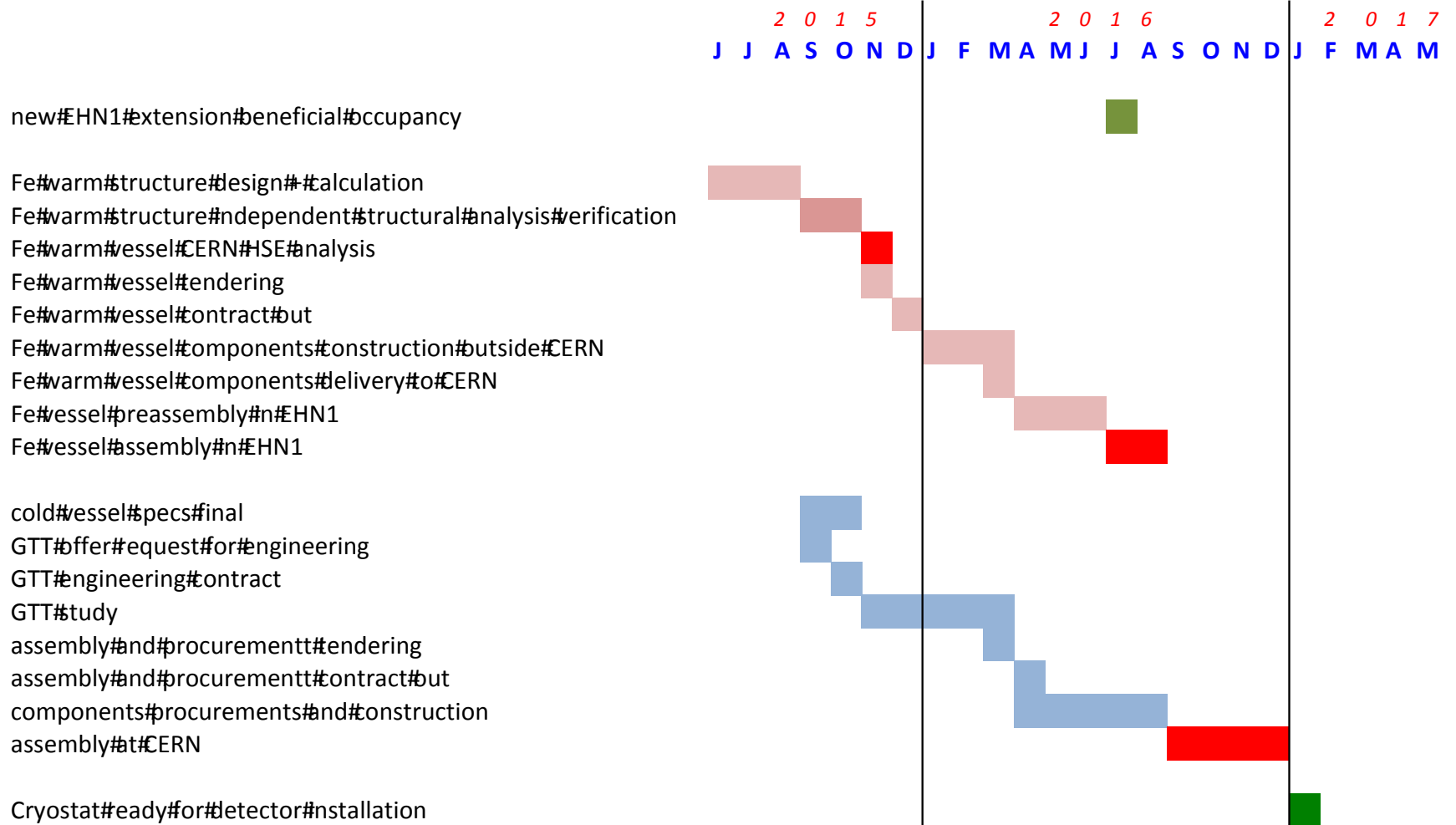
Specification, layout, design: <https://edms.cern.ch/document/1543254>

- Design : GTT contacted to make an offer for the engineering study
- In the next 3 weeks we need to freeze the spec document and in particular the level and quantity of penetrations (3 model available) : we will now consult all partners.

Once we have an offer from GTT we will submit a contract for an engineering implementation study (in October?).

# EHN1 cryostats-for-WA105-and-protodUNE-milestone-schedule

24 Sep 2015 last-update



<http://cenf.web.cern.ch/>

- General pages
- Twiki project details linked to EDMS