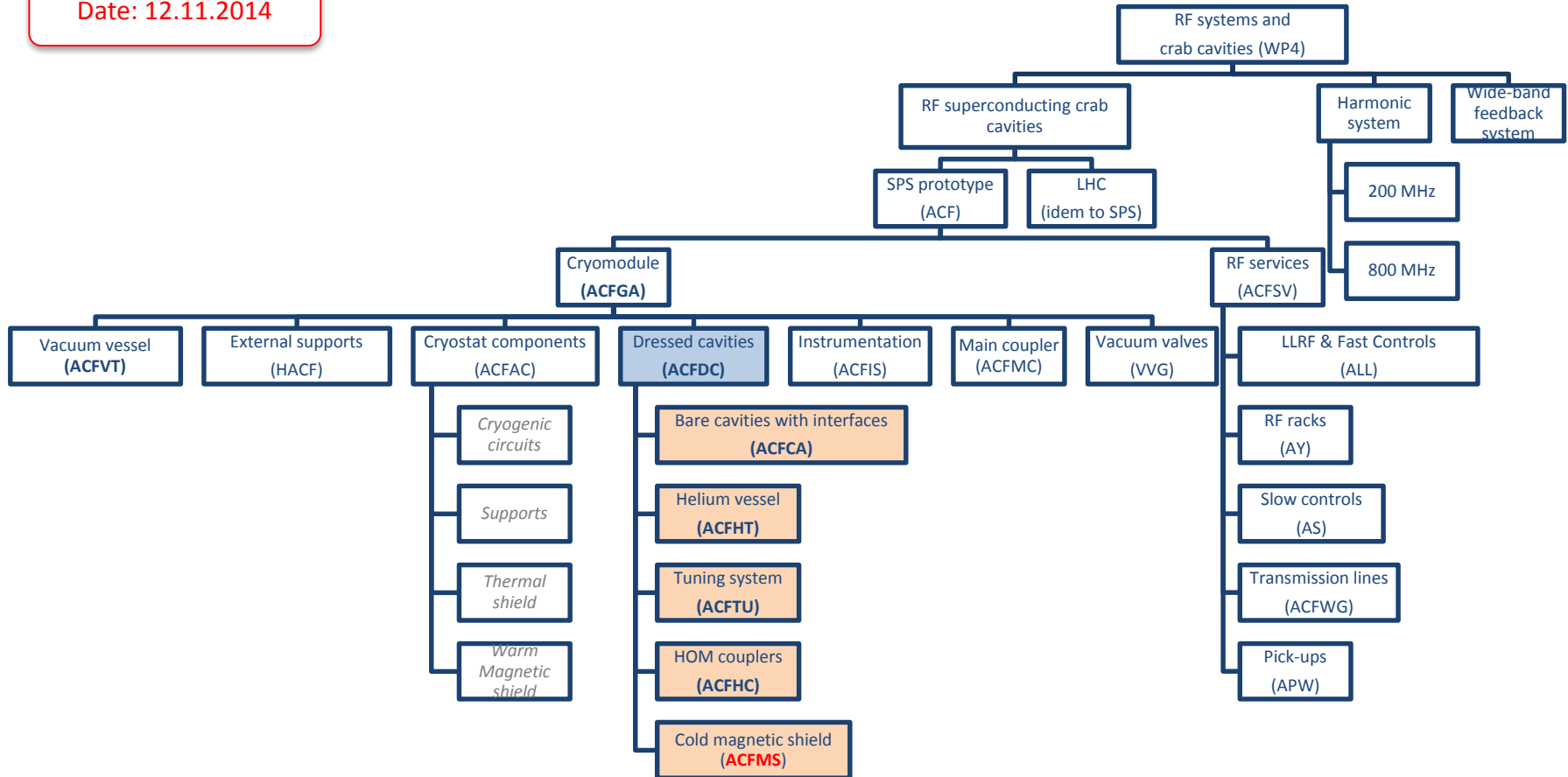


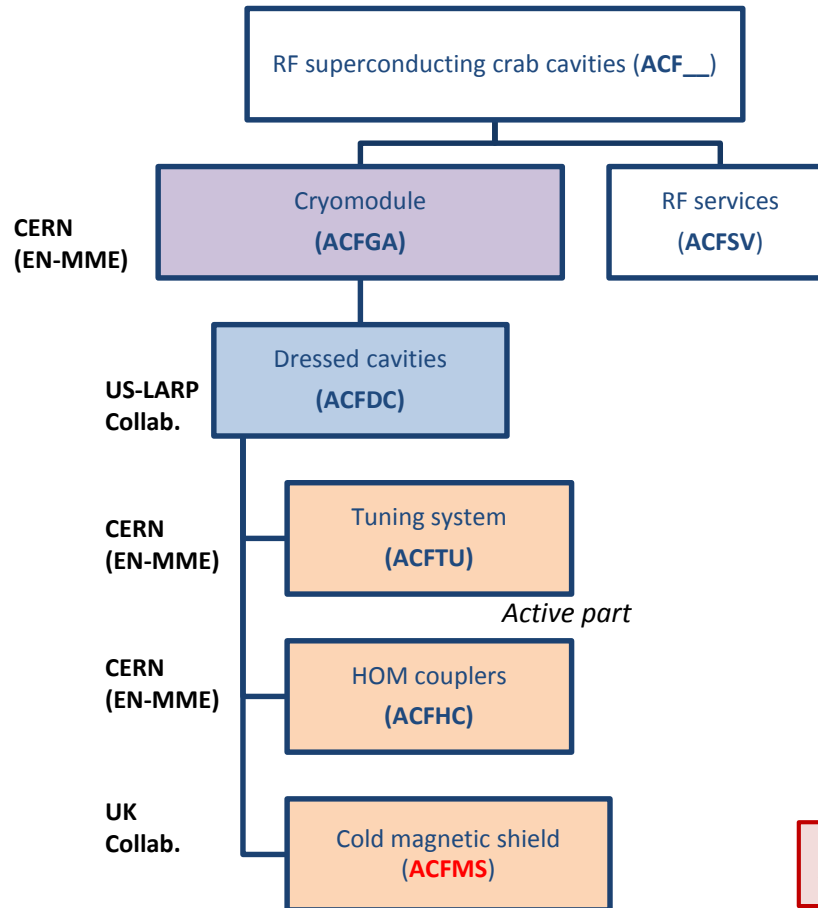
Detailed system architecture

Date: 12.11.2014



Items breakdown

Using present equipment codes



An item generates one or more assets based on the item design file (i.e., item specifications, drawings, and engineering validation reports)

Breakdown criteria:

- 1) Acquisitions launched by CERN (covered by a unique specification, design file, MIP) **AND**
 - Internal (in-house)
 - External
 - Collaborations (in-kind)
 - Industry
- 2) Entities to which are applicable Quality Controls

LHC Equipment Codes should be only defined when the acquisition strategy is established for a given system

Detailed system architecture

Update (TBD)

