



B. Dorney, I. Vai
On behalf of the CMS Collaboration

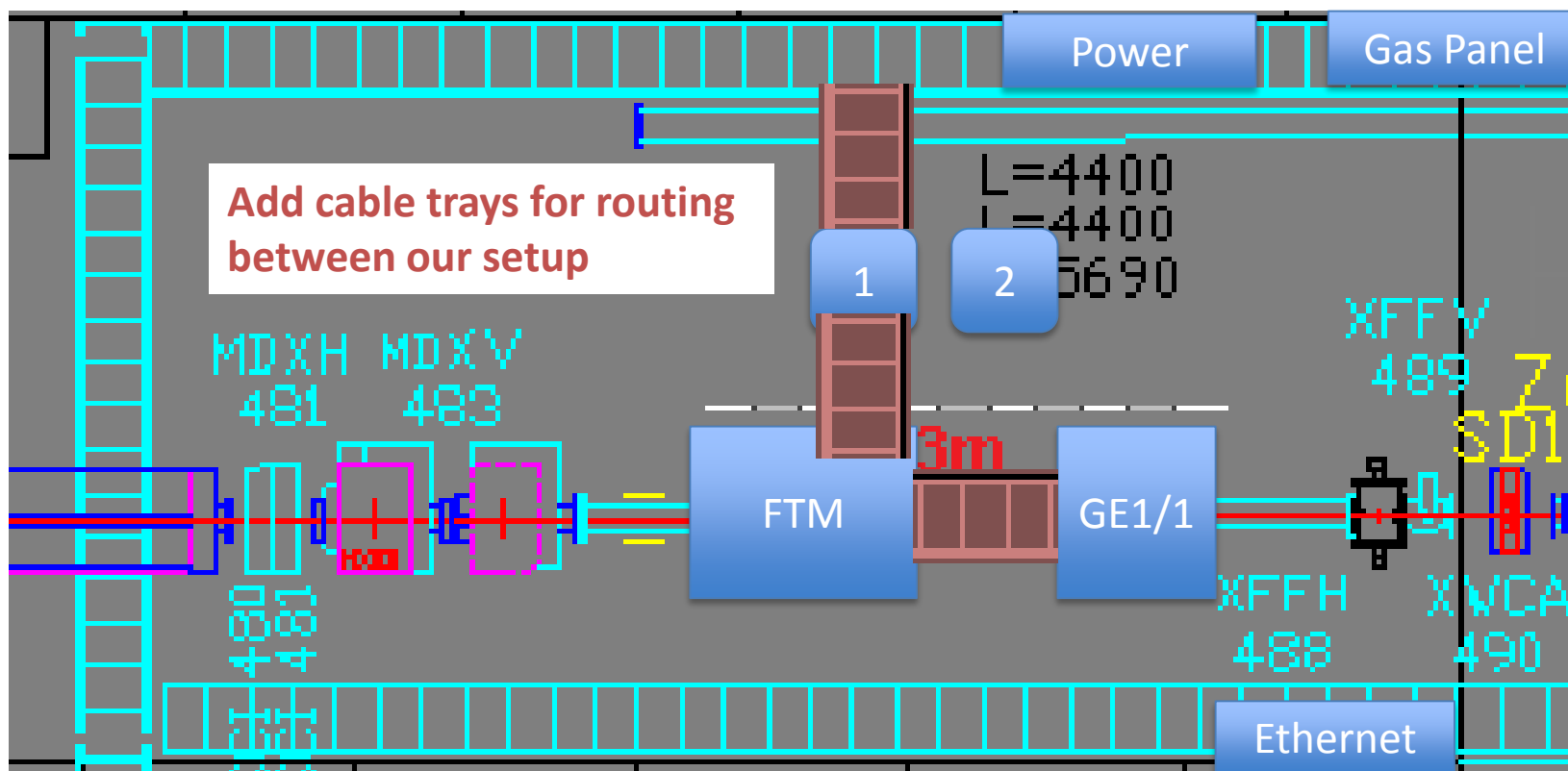
2015 Test Beam Campaign



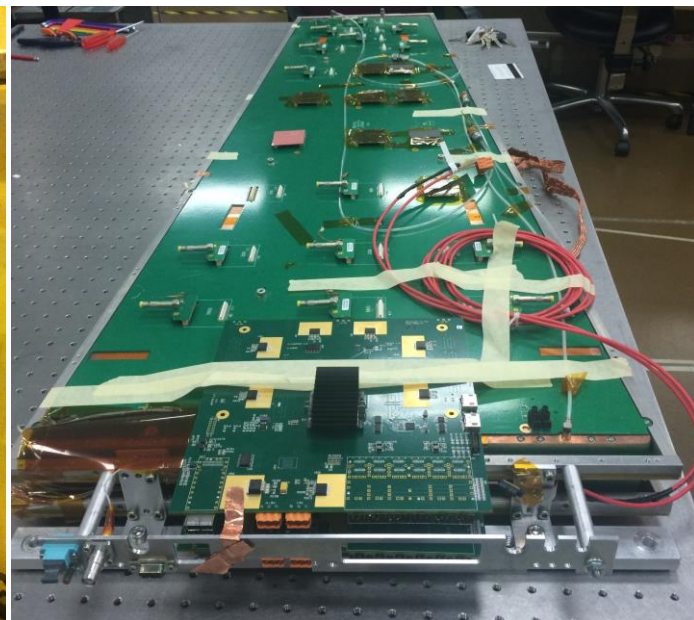
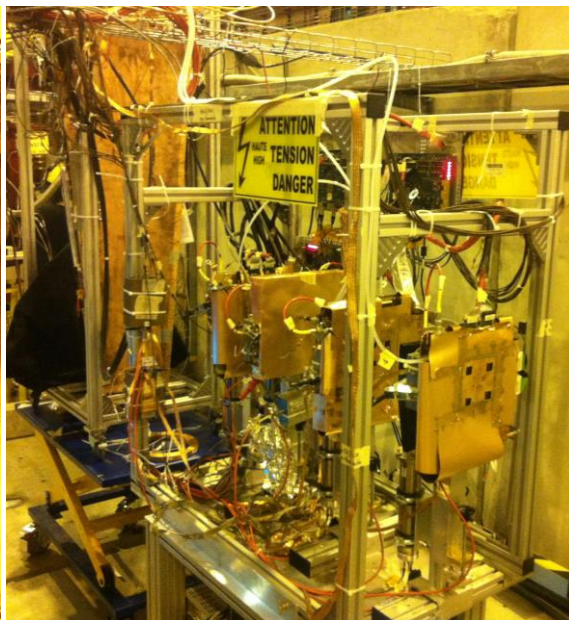
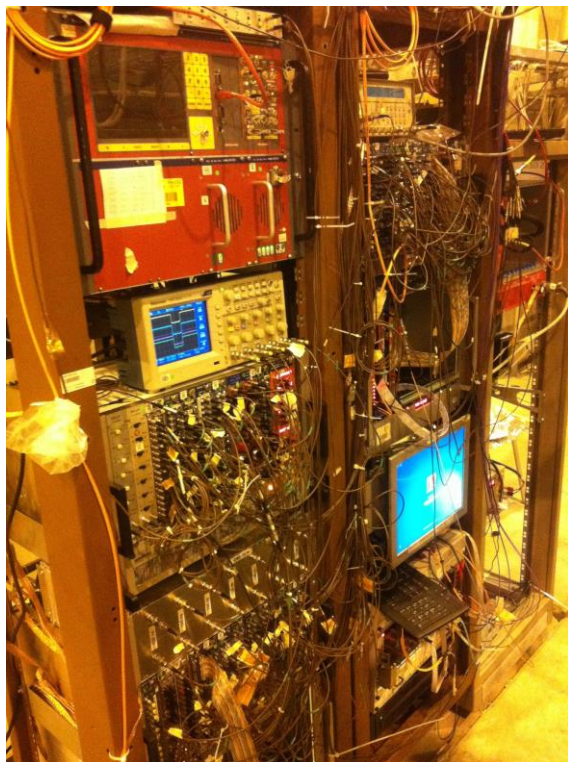
- **LS2 era CMS upgrade**
 - **GE1/1 Superchamber**

- **LS3 era CMS upgrade**
 - **ME0 candidate detector**
 - **Fast Timing Micropattern**

Experimental Setup



Experimental Setup

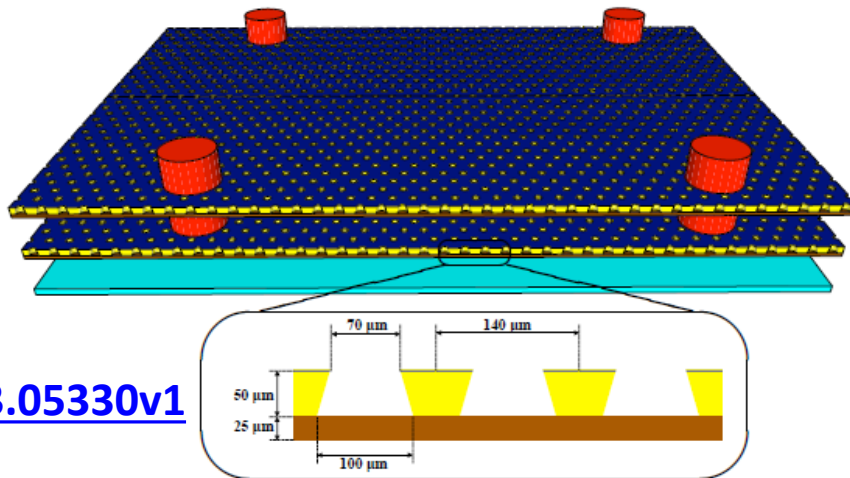
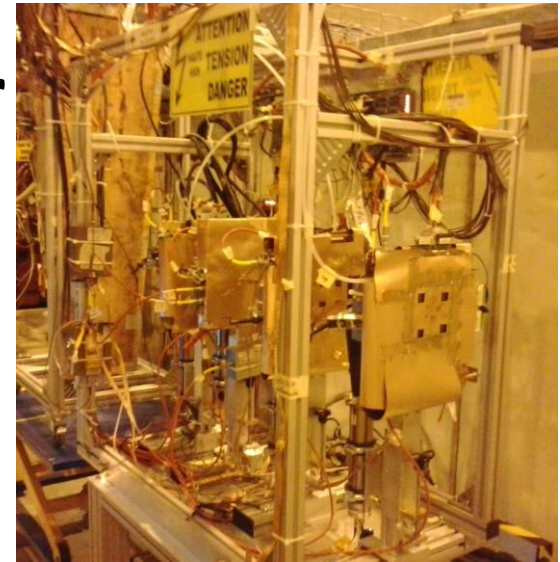


- **With help of CMS & RD51 communities we were able to put together excellent setup this year**



- **First ever GE1/1 super chamber**
 - Studied improvement gained by taking OR/AND of chambers
- **Readout with full CMS DAQ chain**
 - Same DAQ we will use in the “slice test”
- **Test of “online data quality monitoring” prototype**
 - First experience with how we will monitor data coming from online streams in P5

- **Fast timing micropattern detector**
- **Studied:**
 - Time resolution
 - Transparency
 - Uniformity



Reference:

[arXiv:1503.05330v1](https://arxiv.org/abs/1503.05330v1)

...Analysis on-going!!!

2016 Requests



- Interested to participate in the 1st available beam period of 2016
 - Q: When is earliest period? May? June?
- Interested in use the Goliath Magnet for studies in magnetic field
 - Q: Is this possible for 1st period of next year?

Many Thanks to



- **CMS GEM & RD51 communities**
- **Eraldo**
- **Yorgos**