

FE calculations for the PoP tuning system

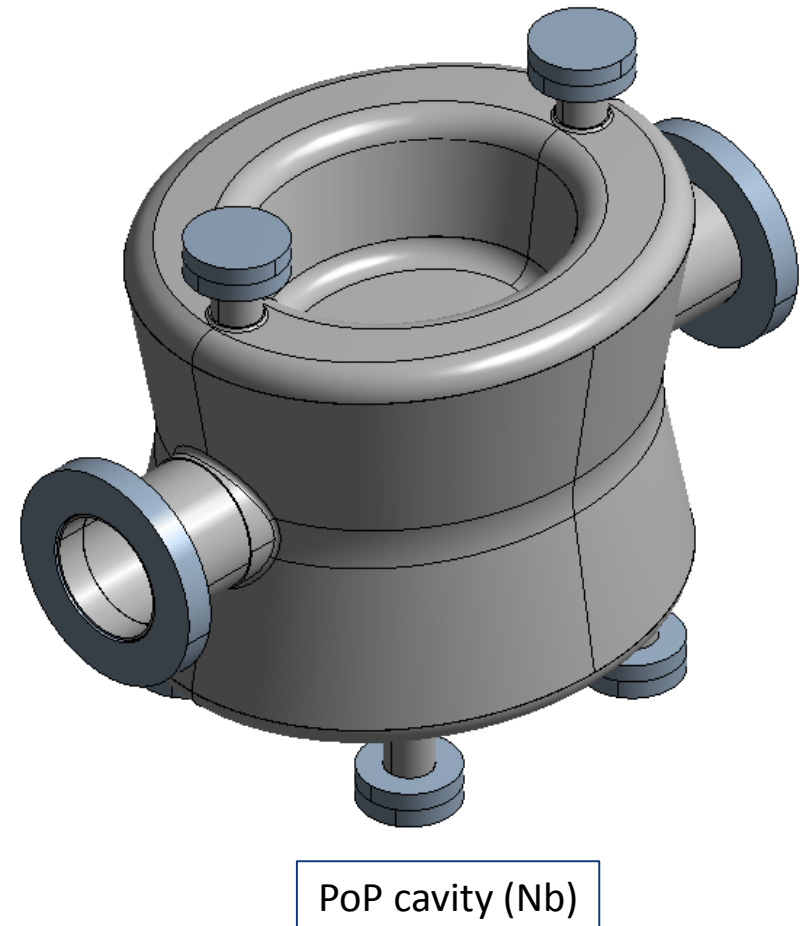
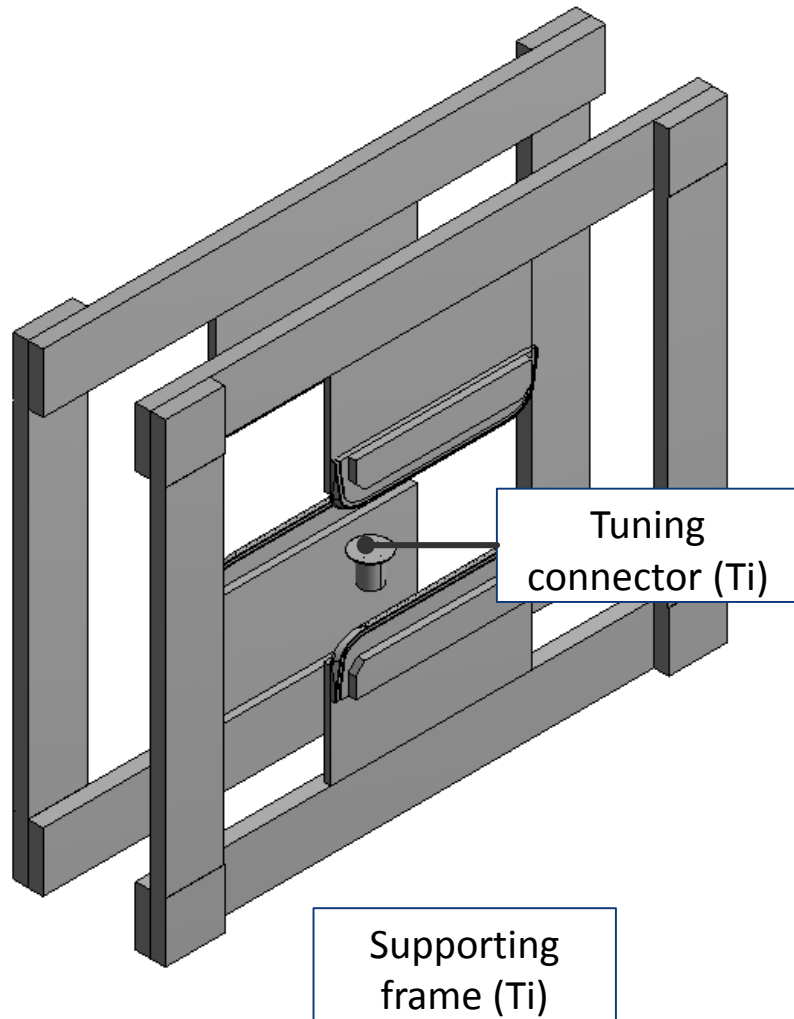
Norbert Kuder (EN-MME)

30/11/2015

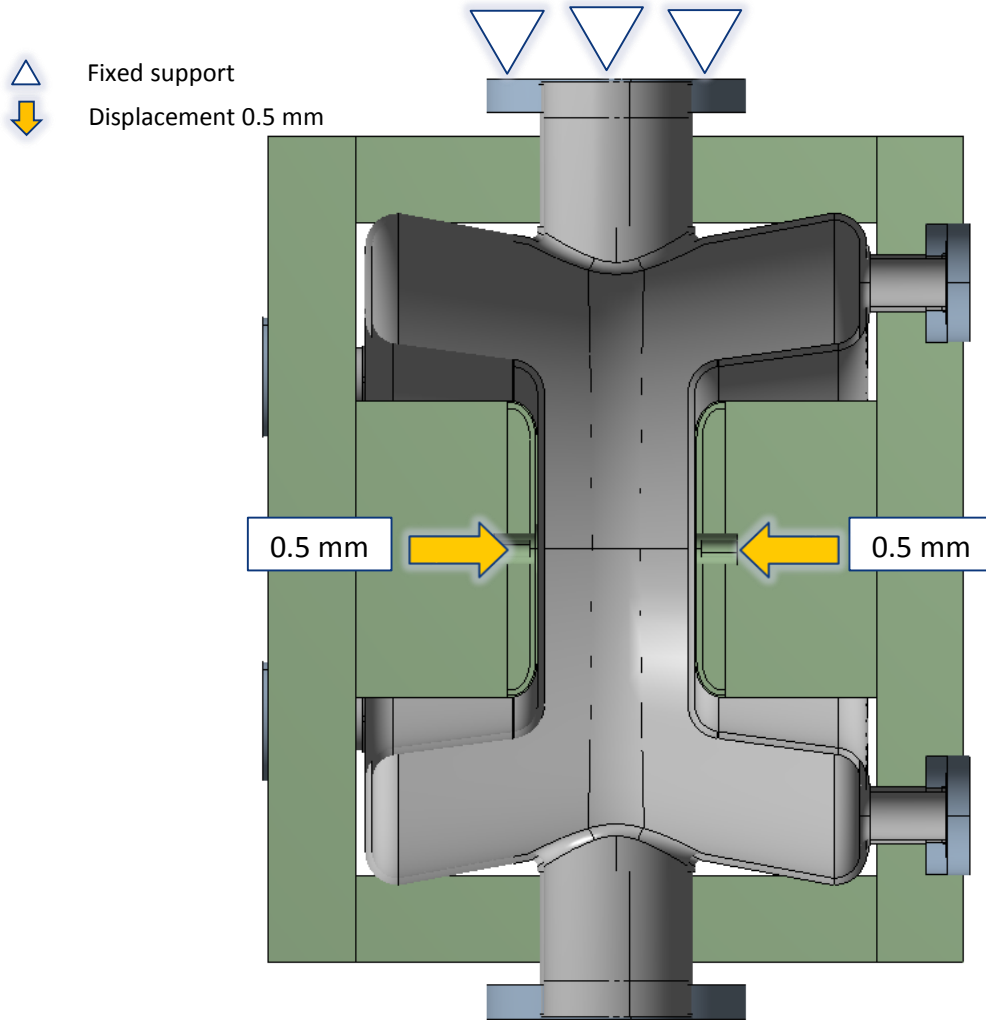


ENGINEERING
DEPARTMENT

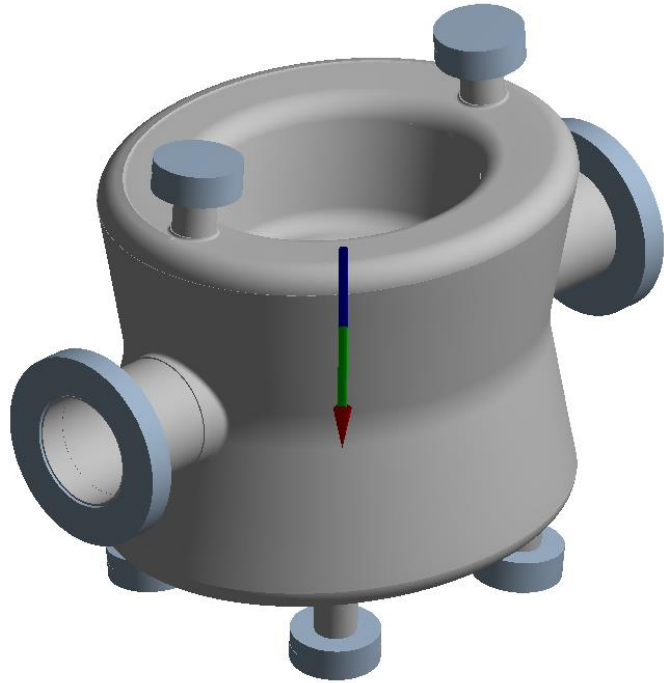
Model



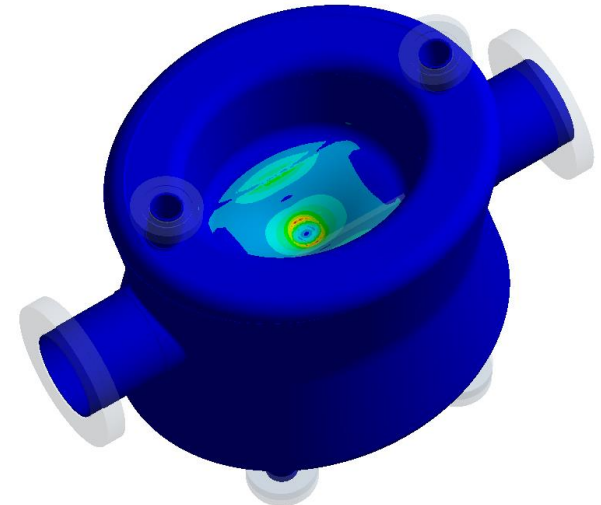
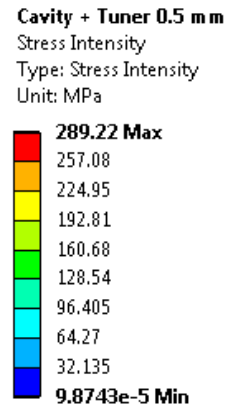
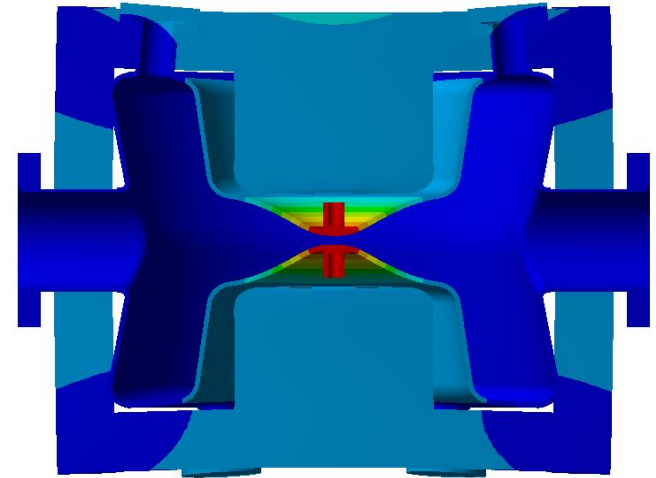
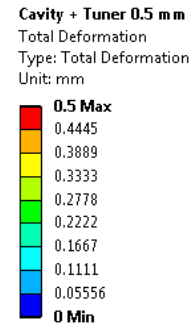
BCs and loads



Results



$$K = \frac{F}{\Delta x} = \frac{3983}{0.5} \approx 8 \frac{\text{kN}}{\text{mm}}$$



Nb RRR300 at 2 K [1]
Rp _{0.2} /1.5 [MPa]
320