



European Grid Initiative

e-infrastructure



European Grid Initiative Design Study Current Status

Luděk Matyska
CESNET

EGI_DS Project Director

(With thanks to Juergen Knobloch for pictures)

Project Information

- Title: European Grid Initiative Design Study
- Budget: 3 872 425 €
- EC Contribution: 2 497 000 €
- Starting date: September 1st, 2007
- Duration: 27 months
- Total man power: 299.25 PMs
- Coordinator: CESNET, Czech Republic (since July 1st, 2008)

GUP University Linz, Austria (till
June 30th, 2008)

Project Partners

1. **CESNET** (coordinator): CESNET, zaimove sdruzeni pravnickych osob (Czech Republic)
2. **GRNET**: Greek Research and Technology Network S.A. (Greece)
3. **INFN**: Istituto Nazionale di Fisica Nucleare (Italy)
4. **CSC**: CSC - TIETEELLINEN LASKENTA OY (Finland)
5. **LMU**: Ludwig Maximillian Universitaet (Germany)
6. **CERN**: European Organization for Nuclear Research (Switzerland)
7. **DNF**: Verein zur Foerderung eines Deutschen Forschungsnetzes - DFN-Verein (Germany)
8. **STFC**: Science & Technology Facilities Council (UK)
9. **CNRS**: Centre National de la Recherche Scientifique (France)
10. **GUP** (*former coordinator*): *Johannes Kepler Universitaet Linz (Austria)*

Project Review

- October 3, 2008, Brussels
- Successfully passed (Good to Excellent)
- Major issues from the review report
 - Steps for the targeted call for EGI in 2009
 - NGI maturity: Identify credible potential partners, assess the NGI maturity in regular intervals
 - Location of the EGI.org
 - Convincing EC at the political level
 - Convincing National Authorities and funding bodies

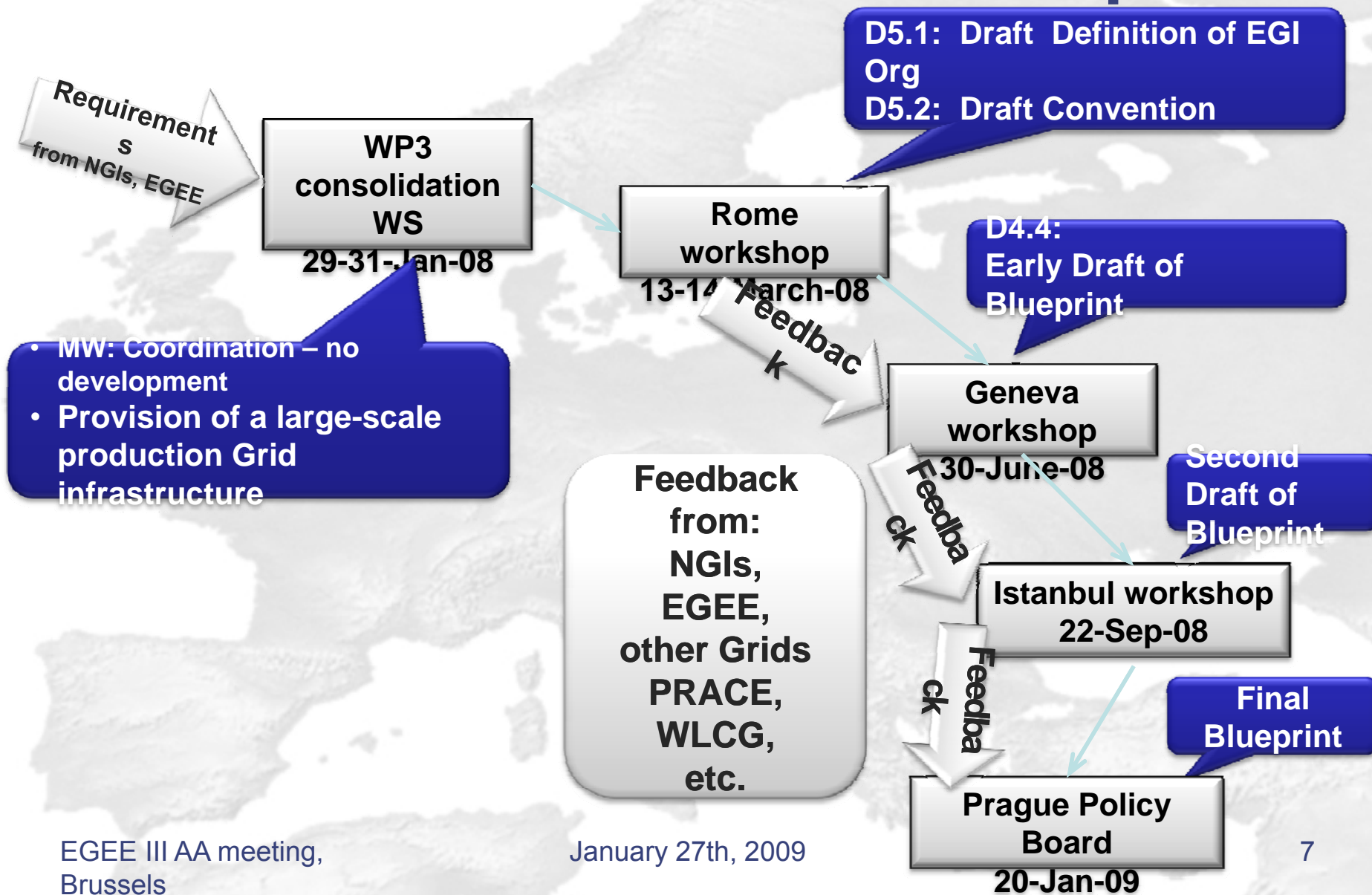
Collaboration Activities

- EGEE
 - Extensive involvement of EGEE staff in the Blueprint and D3.1 deliverable
 - Agreement on input for the transition deliverable (EGEE DNA1.4 and other material from EGEE)
- PRACE meeting in Lyon (during ICT)
 - Discussion on relationship between EGI, PRACE and DEISA
- CERN involvement
 - A short meeting (EGI PD and new CERN RD) January 14th
 - New CERN management explicit support for EGI
- More emphasis on ESFRI projects as the major users of the future EGI infrastructure
 - Leverage current EGEE activities

Goal of EGI Design Study

- Design of a new organizational model of a sustainable pan-European Grid infrastructure
 - **the Blueprint**
- Securing the endorsement of the proposed design
 - **Policy Board meeting, 20th January 2009**
- Preparation and setup of the new organization
 - **the EGI.org**

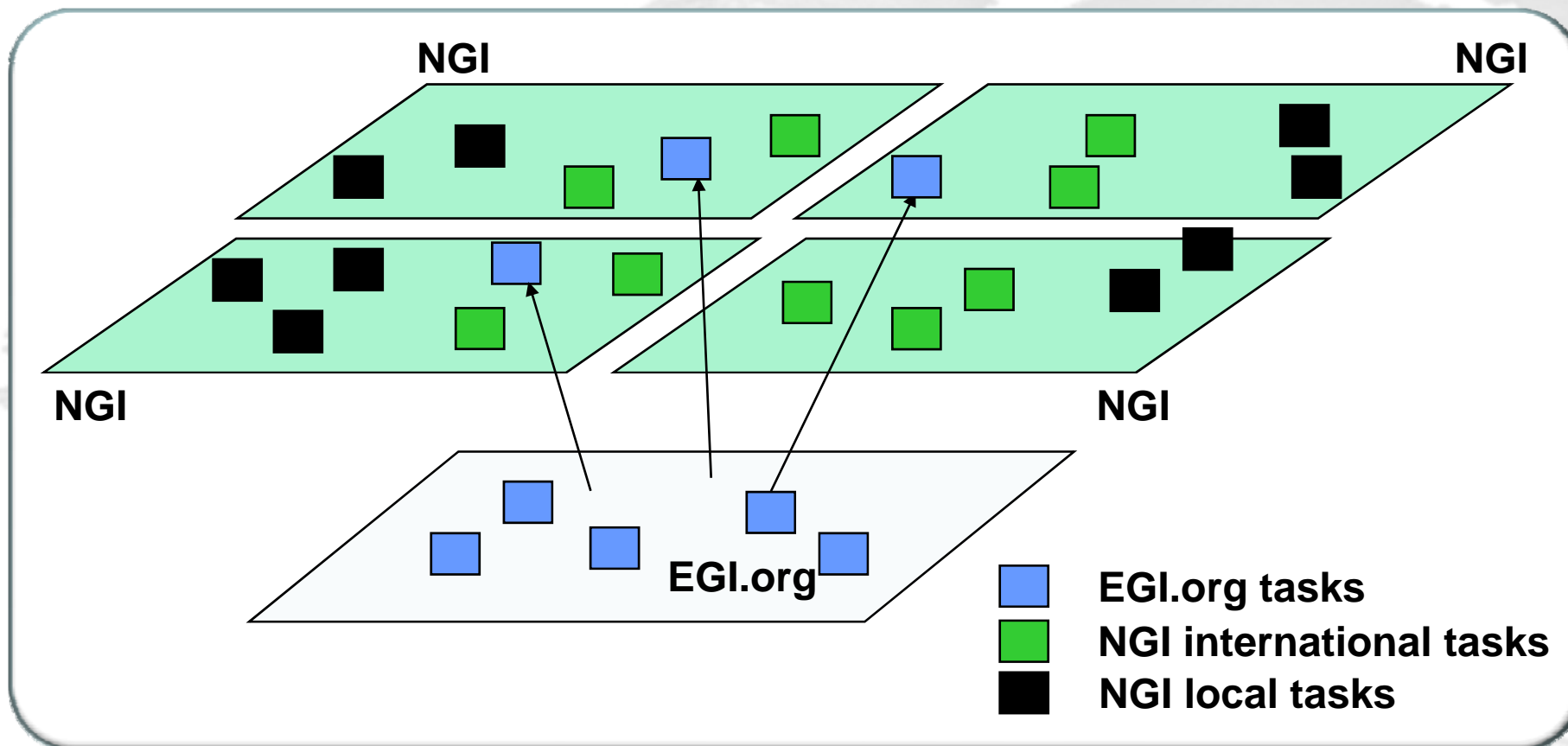
The Road to the Current Blueprint



EGI Basic Elements

- EGI = EGI.org + NGIs
 - EGI.org a coordinating body
 - NGIs basic sustainable actors
 - National funding
 - Own agenda and tasks
 - Synergies when working together at the EU level
- No middleware development within EGI
 - However, middleware maintenance included

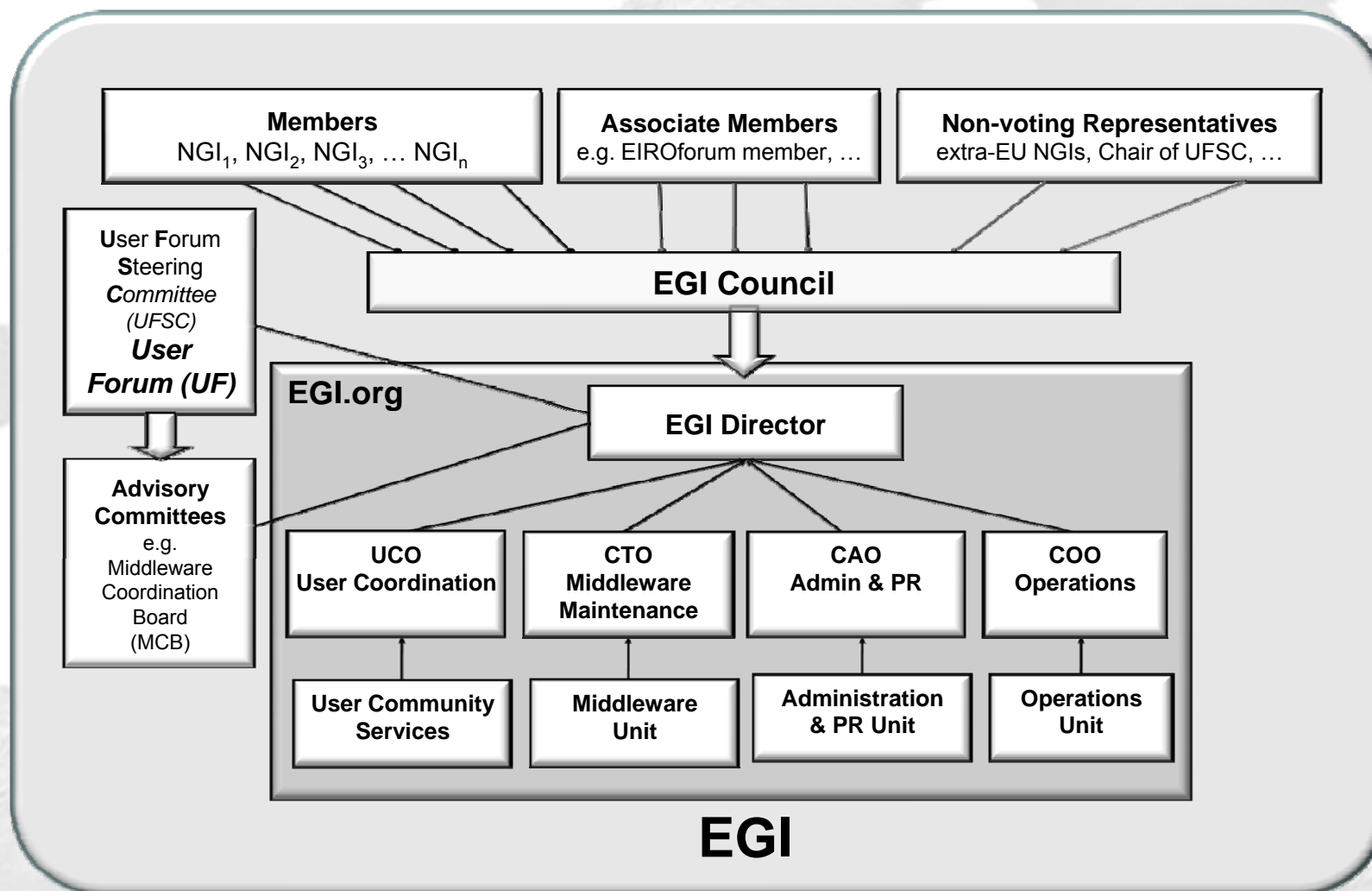
EGI.org and NGI Tasks



Business Model

- International research teams and projects need a common international infrastructure to share data and compute resources
- EGI ensures a common infrastructure
 - National funding of research infrastructures → NGIs
 - Coordination through EGI.org
 - Steered by users

EGI Management/Governance



Funding

- National and Institutional funding for research infrastructures
- EC funding
 - International coordination
 - International activities
 - Innovation
 - Start up phase
- National co-funding of these activities

Resources for EGI.org

Costs for	EGI.org Costs (in FTE/a)
Operations	17
Middleware interfaces and final certification	8
User Community Services	11
External Liaison Functions	4
EGI.org Management and Administration	11
Total	51

Resources in NGIs

Task	Small NGI	Medium NGI	Large NGI	“Sum”
Operations and Security	2-4 FTE	5-10 FTE	14-22 FTE	225 FTE
International User Community Services	0.5-1.7 FTE	1-2.5 FTE	1.5-4 FTE	60 FTE
Specialised Support Centres				50 FTE

**Based on current experience
These resources exist in countries with operational grid
infrastructure**

EGI Financial Reference Model

	NGI International tasks		Middleware maintenance	EGI.org	Total
	Operations	User services			
Costs					
EGI Effort (FTEs)	225	110	70	51	
EGI costs (M€/year)	20.25	9.90	6.30	4.59	41
Income					
NGI membership fees (M€/year)				1,0	1
EC Contribution (M€/year)	10.125	4.95	3.15	1.80	20
NGI, Middleware consortia and EIRO/ESFRI co-funding Contribution (M€/year)	10.125	4.95	3.15	1.80	20

Funding view of NGI



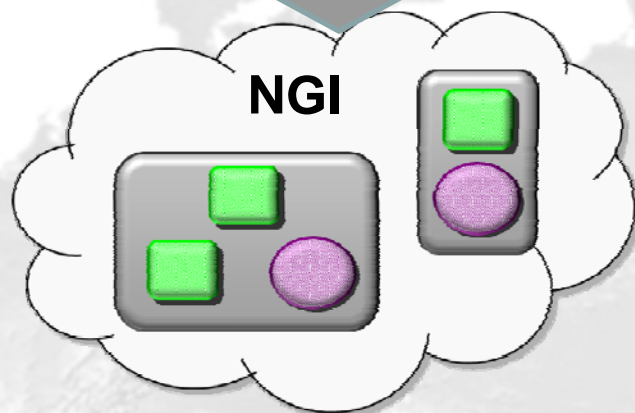
EC Funding

600 k€

600 k€



National
Co-Funding

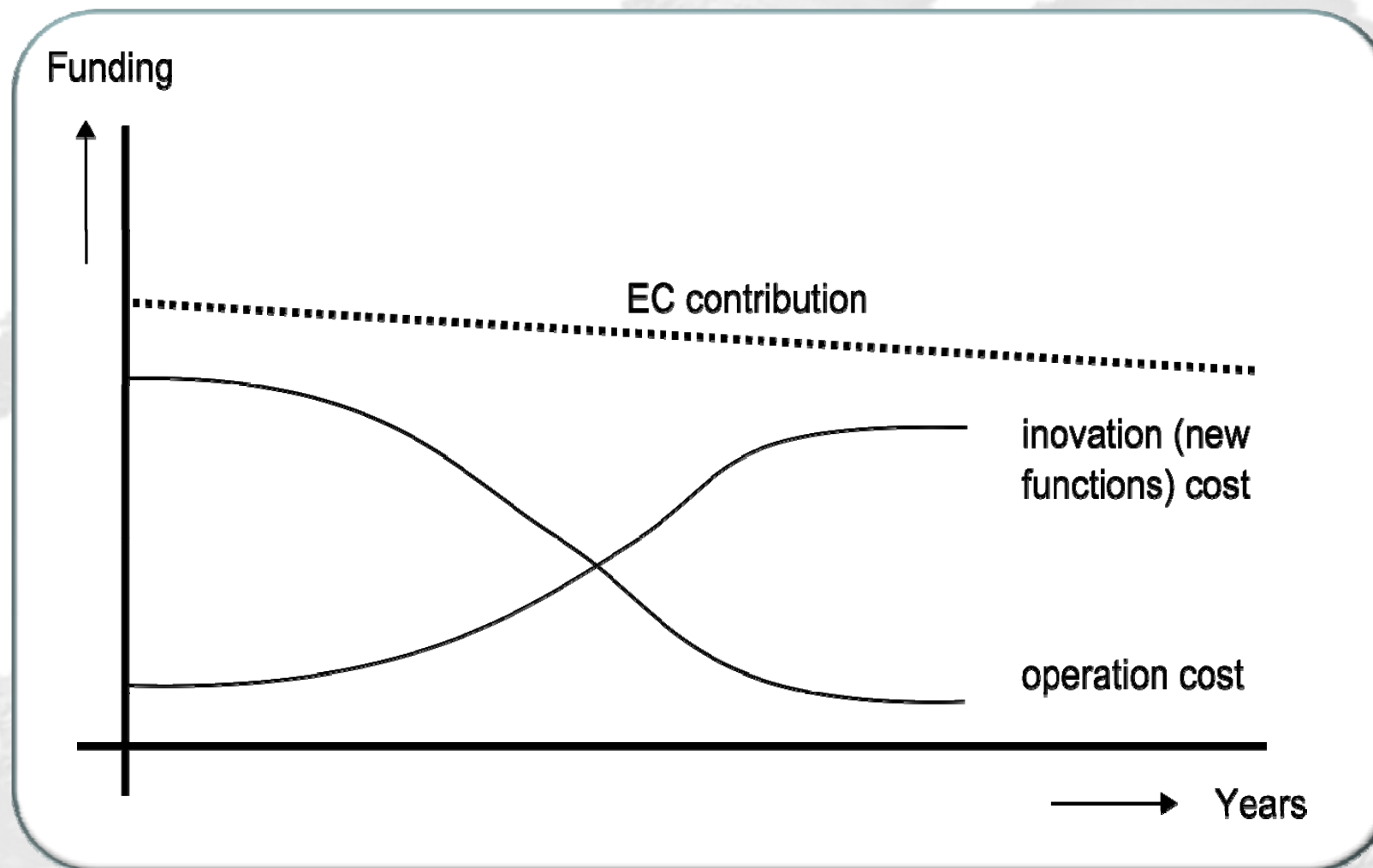


← "Average
medium sized
NGI"



Membership
Fees **30 k€**

Funding Evolution



Transition towards EGI

- EGEE and similar EU projects
- Major issues
 - NGIs maturity level
 - The EGEE JRUs not always identical with the proto-NGI
 - Representing/working with different user communities
 - Different approaches toward national infrastructures
 - EGI.org
 - Location
 - Key personnel identification
- Need for EGI technical representation
- “Transition Scenario from Current Grid Infrastructures to EGI” (Deliverable D5.5)

EGL.org Location

- Call for bids closed January 7th, 2009
- Total of 8 bids received
 - France (Lyon), Finland (Espoo), Italy (Milan), Lithuania (Vilnius), Netherlands (Amsterdam), Poland (Krakow), Slovenia (Ljubljana), Spain (Trujillo)
- Evaluation Board constituted during EGI PB meeting in Prague (January 20th)
- Decision to be taken by the PB in Catania, March 2nd

Summary

- The first phase successfully completed
 - Blueprint accepted and endorsed
 - Huge interest in hosting EGI.org
 - Clear financial breakdown
- The second phase even more challenging
 - Securing EC and national funding
 - EGI.org setup and personnel identification
 - Maturing NGIs
 - Clear definition of the transition path for all EU and national Grid infrastructures



European Grid Initiative



<http://www.eu-egi.eu>
contact@eu-egi.eu