

Future of the Offline

Predrag Buncic

CERN



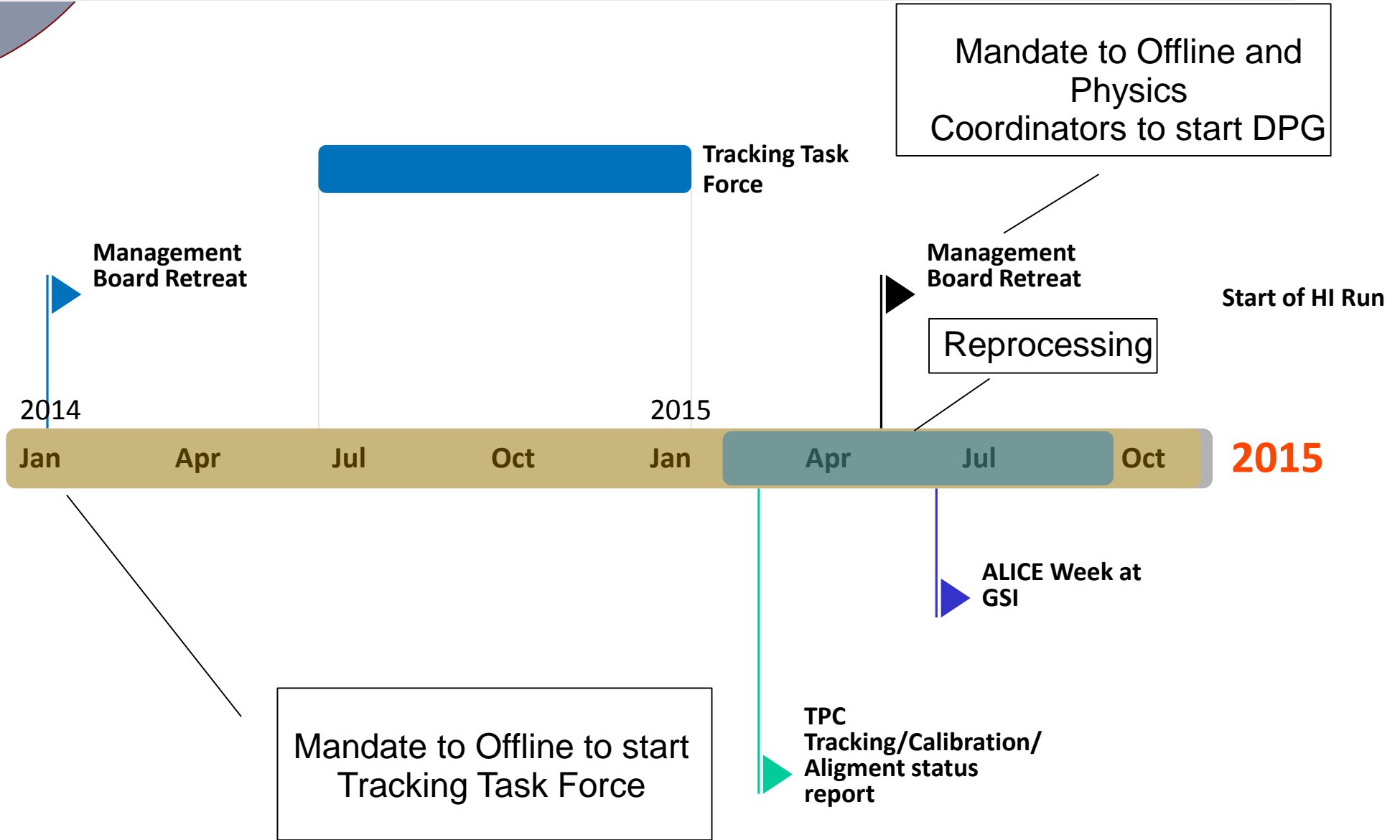
ALICE

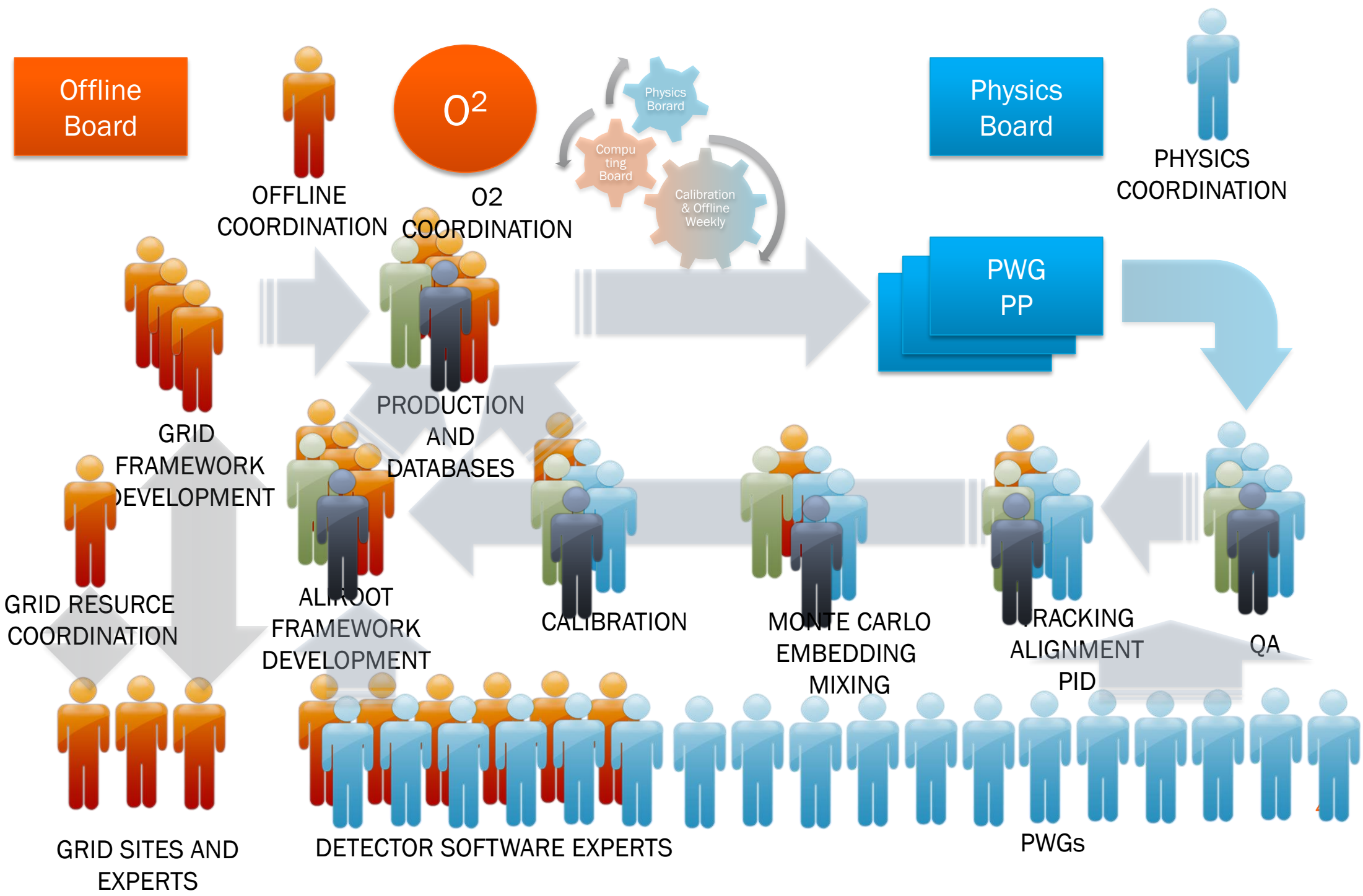
Data Preparation Group



ALICE

Timeline





Data Preparation Group

- With Physics Board define the quality that needs to be met by the reconstruction/simulation software in order to perform the required measurements
- With Run Coordination define the usable datasets that need to be reconstructed
- With PWGs define datasets that need to be simulated
- Coordinate and executes the calibration and QA activities that lead to reconstruction
- Coordinate, configure and test the corresponding MC productions
- Define and describe the datasets useful for analysis
- Issue tickets to Offline and detector experts for blocking software issues
- Provide the status reports to Physics Board get the input on priorities
- In cooperation with Offline and Physics Coordination Identifies areas and/or open tasks where the manpower is needed and defines service tasks to cover them

Operations

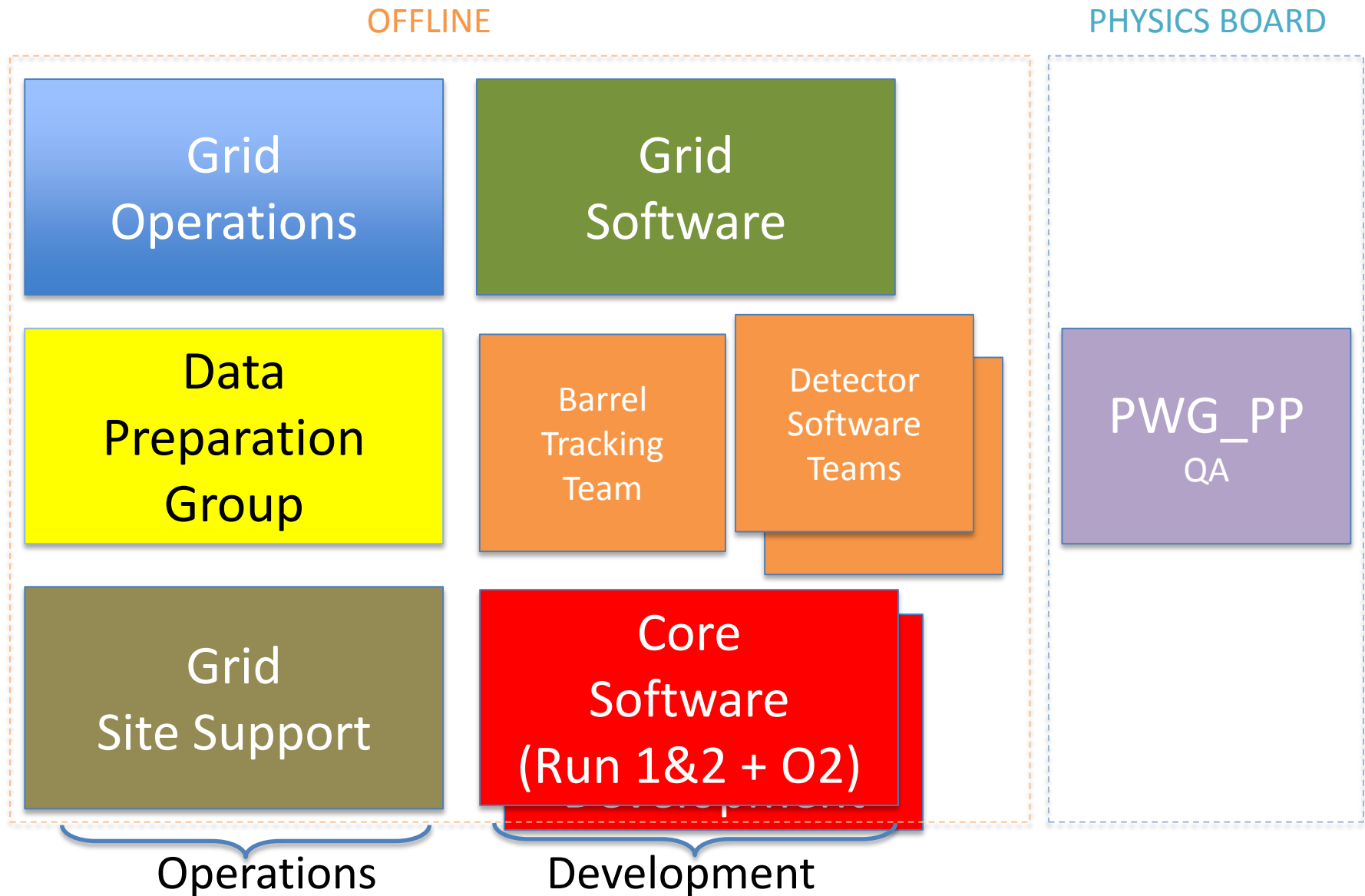
Barrel Tracking Team

- Evolution of Tracking Task Force
- Combined the effort and expertise from
 - ITS, TPC, TRD, TOF
- Delivers combined (global) tracks and PID
- Responds to calibration and QA requests by DPG
- Includes manpower from all participating detector projects + additional manpower from the collaboration
- Barrel Tracking Group has a coordinator and a deputy

Development

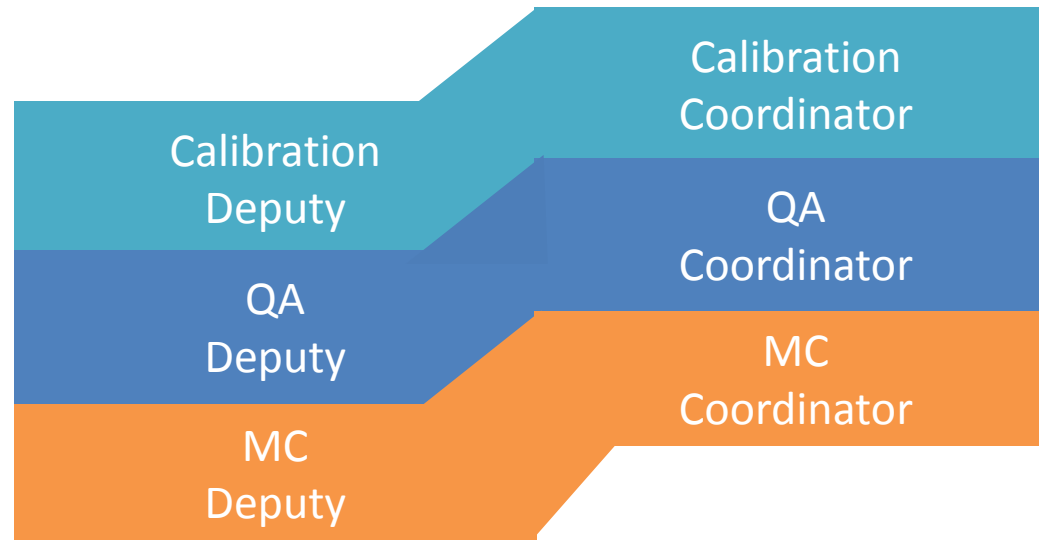


Data Preparation Group within Offline





Data Preparation Group

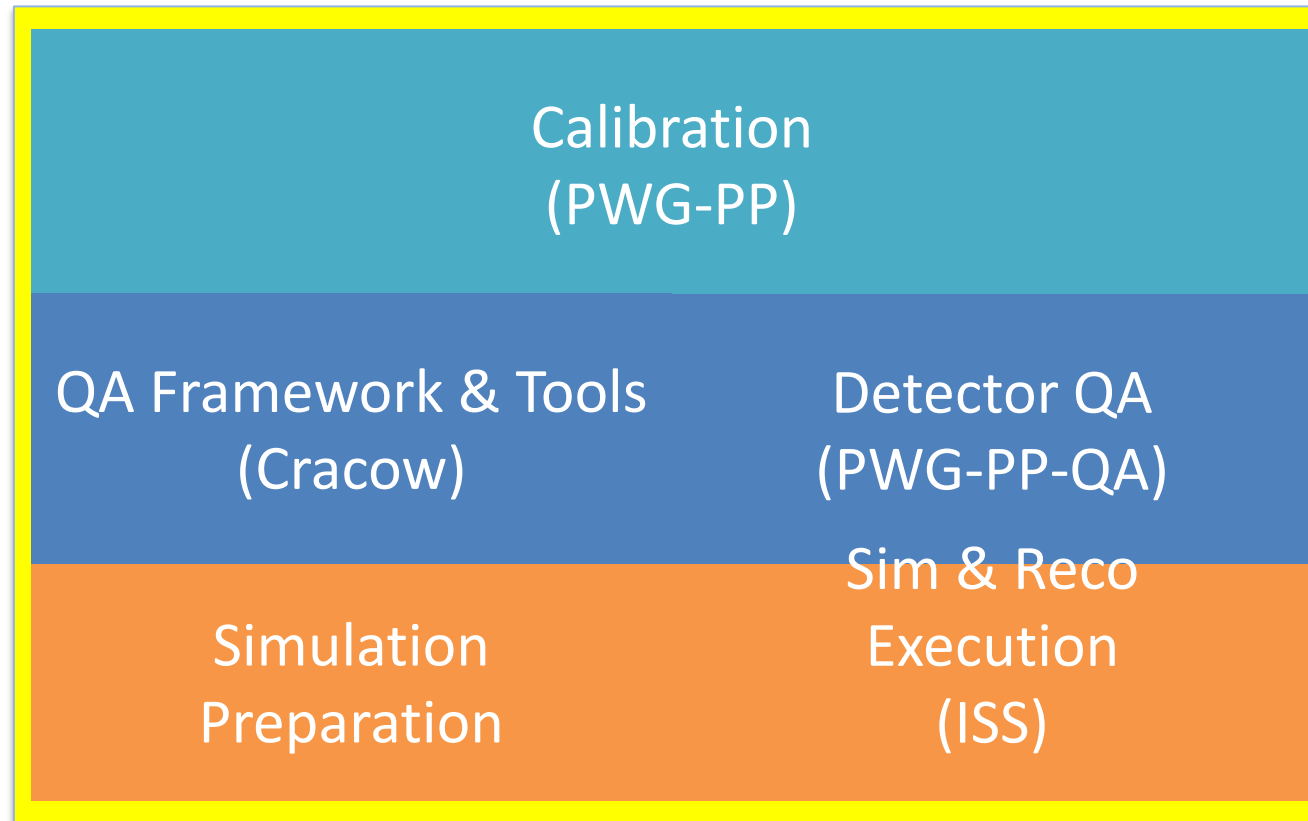


- Operations team (not necessarily the experts and developers themselves)
 - Facilitators, their job is to remove any impediments that obstruct a team's pursuit of its sprint goals
 - 1 year mandate (6 months as deputy + 6 months coordinator) @ 50%

- Institute of Space Science, Bucharest (Catalin-Lucian Ristea) agreed to take the (institutional) responsibility for
 - execution of the MC productions
 - development, tuning and testing of the AOD filtering and QA train macros used in MC and RAW processing and AOD refiltering
 - preparation and execution of the RAW data production cycle
- Institute of Nuclear Physics, Cracow (Jacek Otwinowski) aiming to take the (institutional) responsibility for
 - Supporting and developing common QA tools and procedures
 - Common presentation layer for
 - software QA
 - detector (reconstruction) QA
 - detector response (simulation) QA

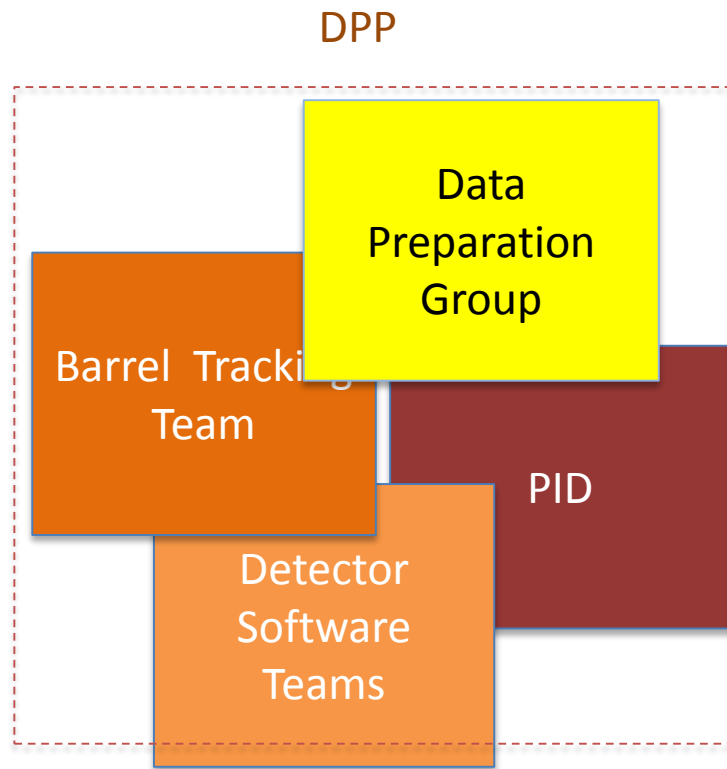


Data Preparation Group

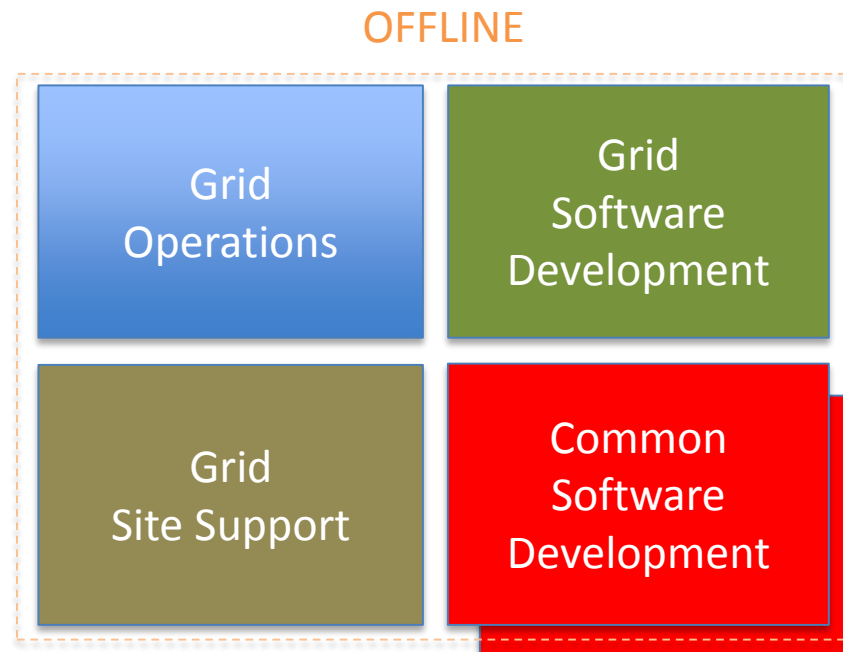


- To first order, assigning the roles in DPG taking into account that we cannot disrupt the work that is currently being done in PWG-PP
- The good news is that PWG-PP groups and Offline are already working together practically implementing this scheme

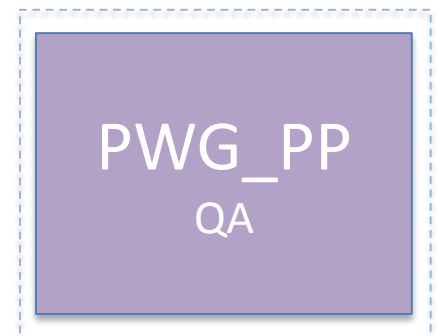
Final stage: Data Preparation Project



- Once DPG is established and demonstrates its viability we will proceed with creation of an independent project charged with data preparation and detector software developments



PHYSICS BOARD

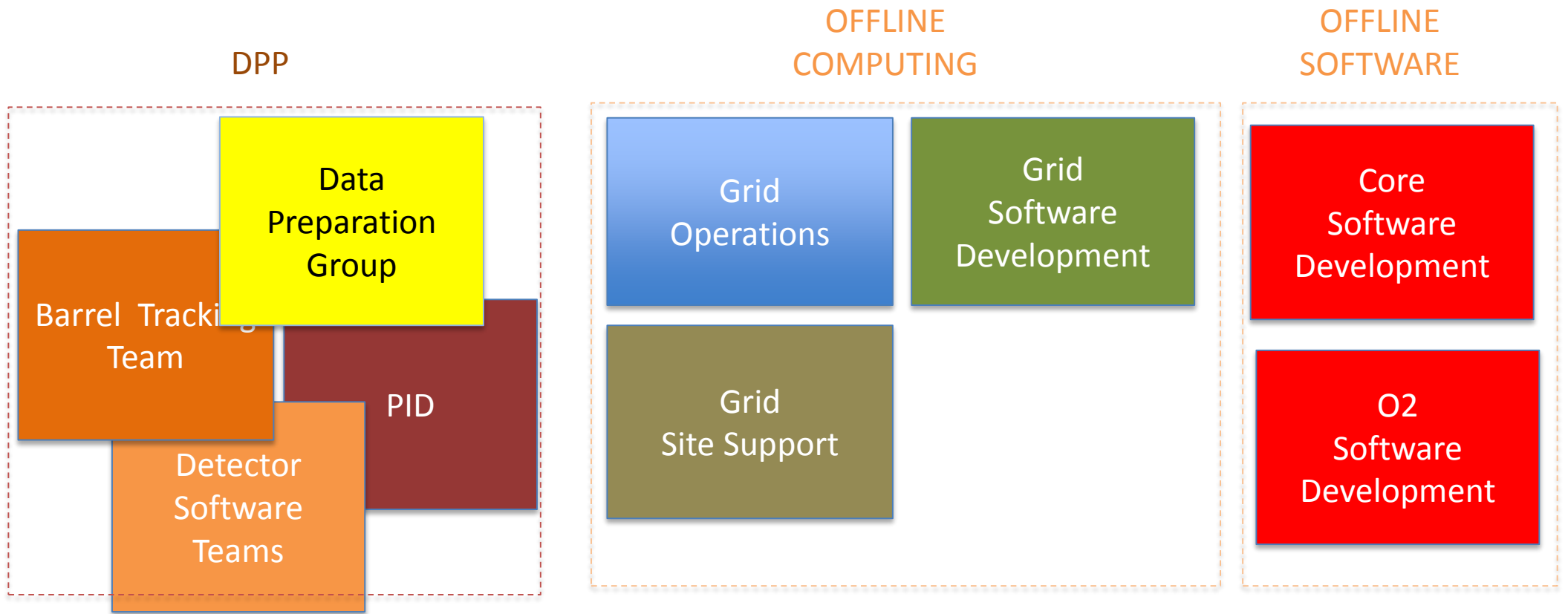


- Offline Role:

- The Offline will focus on Computing aspects (Grid) and common software development (frameworks) as well as its contribution to O2 project



One more step?



Offline Project Organization

Computing Board

Fine print from the ALICE Constitution

The Offline Board (OB) is responsible for the development of the Offline of the experiment and for the co-ordination among the offline software of the various sub-detectors, the Data Acquisition (DAQ), project and the global ALICE offline framework.

The OB is chaired by the Offline Coordinator (OC) and has the following membership:

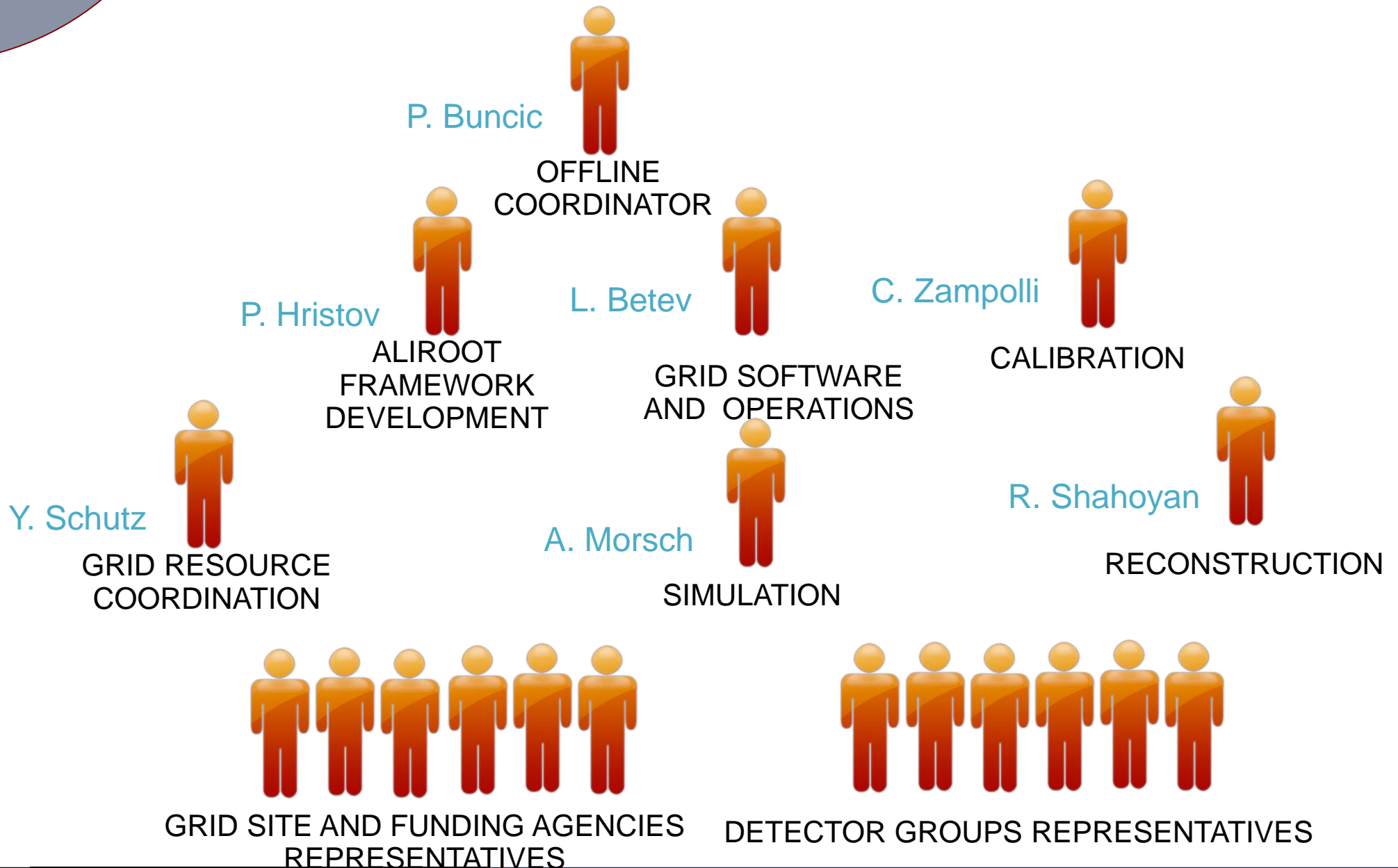
- up to two representatives from each Subproject;
- one representative from the Physics Board;
- one representative from the Technical Board;
- authors of major software packages.

Ex-officio members of the OB are the Coordinators responsible for reconstruction, simulation, framework development and production environment. Representatives from the candidate Regional Centres are also members of the OB. The representatives of the Subprojects are nominated by the Subproject Leaders normally for three years. The OB holds both open and closed meetings.



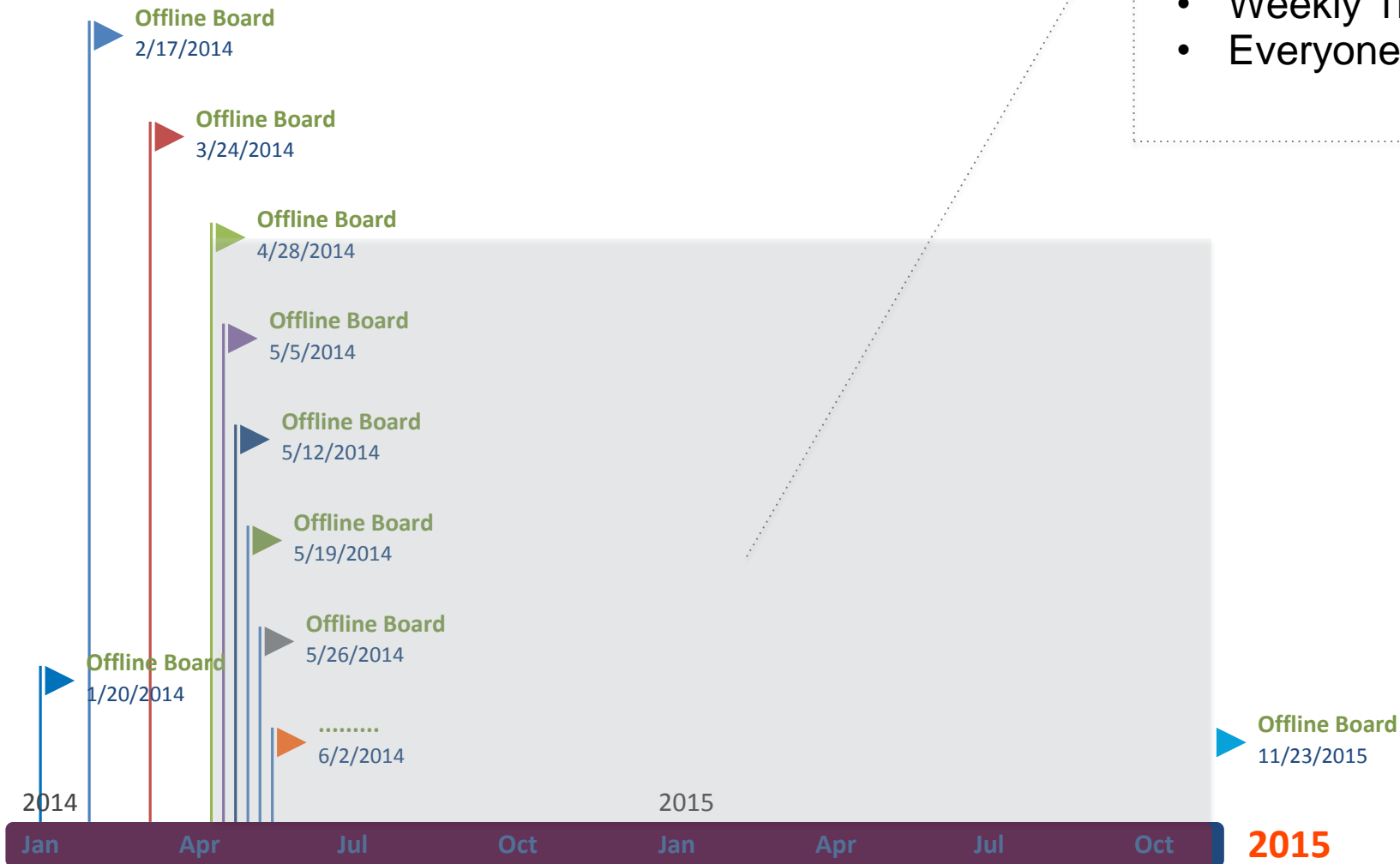
ALICE

Who is doing what?





Offline Board Meetings



- Weekly 1h meetings
- Everyone is invited

- The weekly Offline Board (1h) Meetings were established 18 months ago
- This seems to work well and covers most of the Offline operations
 - Structured agenda with fixed format
 - Presentations restricted to very short subjects requiring immediate attention or decision
 - Longer discussions and proposals referred to the next Offline Week
- Direct link to Offline
 - Analysis community represented by the PB deputy and PWG conveners
 - Everyone is invited
- Possible changes in the future
 - The core composition of the Offline Board will have to be re-aligned with DPG once it comes to life
 - As we will have only two Offline Weeks in 2016 we will have to plan for longer OB meetings once per month to give room for longer presentations and proposals
 - At least twice per year we will have to give more time to Computing Resources discussion

Offline Weeks in 2016



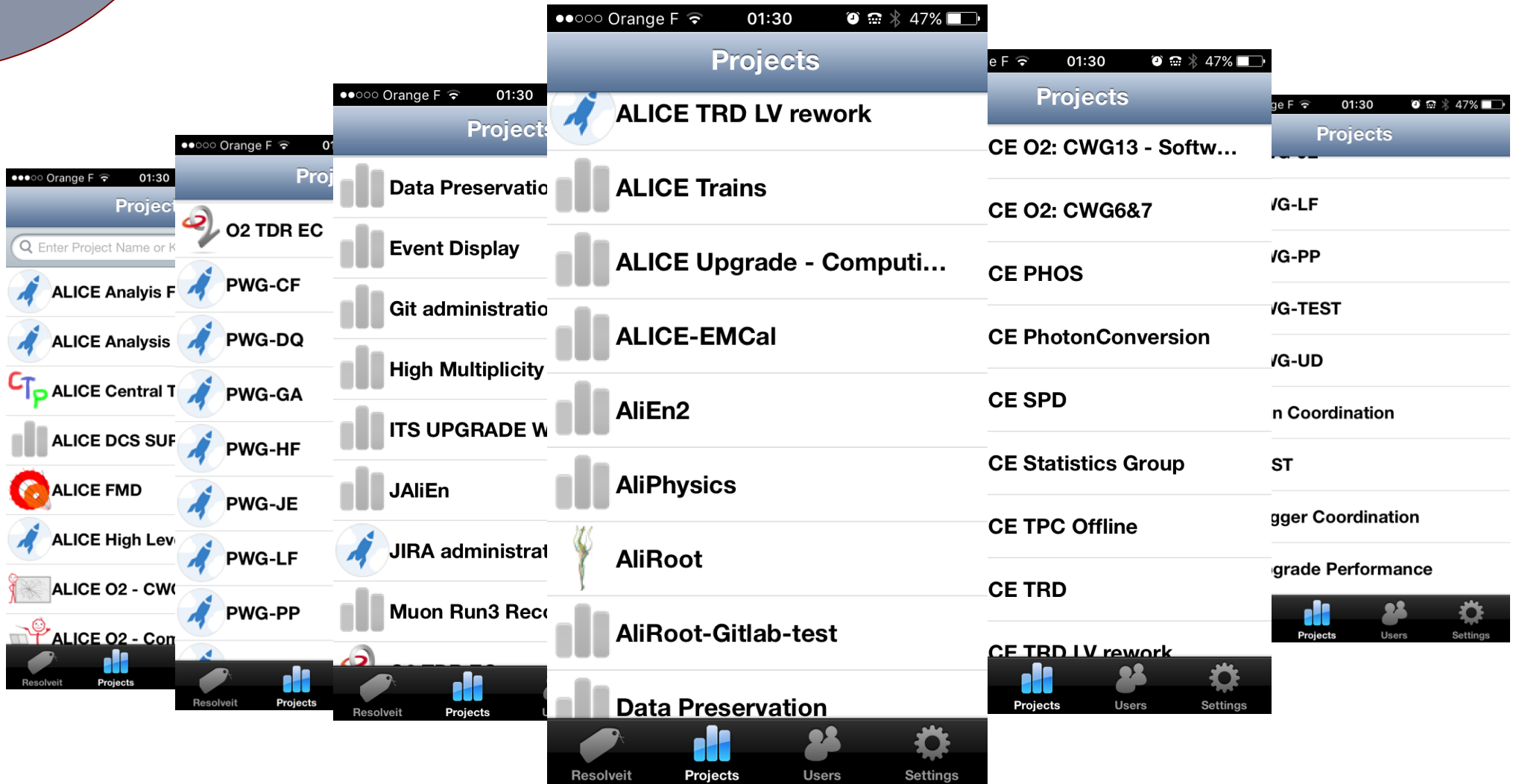
Offline Weeks in 2016

WK	Monday	ALICE	CERN	WK	Monday	ALICE	CERN
0			CERN restart 04-Jan / FR Holidays. 04-Jan	26	27-Jun		SQM, ATLAS week (outside CERN)
1	04-Jan			27	04-Jul		
2	11-Jan			28	11-Jul	ALICE WEEK	
3	18-Jan		ACAT	29	18-Jul		
4	25-Jan	MINI WEEK		30	25-Jul		
5	01-Feb			31	01-Aug		ICHEP
6	08-Feb		CMS week	32	08-Aug		
7	15-Feb	MINI WEEK		33	15-Aug		
8	22-Feb		ATLAS week	34	22-Aug		
9	29-Feb	LHCC week		35	29-Aug	preview HP/BOARDS	
10	07-Mar	PHYSICS WEEK	LHCb week	36	05-Sep		08-Sep closed
11	14-Mar		Council Week	37	12-Sep	approval HP	Council Week, LHCb week (outside CERN), CMS week
12	21-Mar		25-Mar closed/Easter	38	19-Sep	LHCC week	HARD PROBES
13	28-Mar	OFFLINE WEEK	28-Mar closed/Easter	39	26-Sep		
14	04-Apr	ALICE WEEK		40	03-Oct	MINI WEEK	
15	11-Apr			41	10-Oct		CHEP
16	18-Apr		CMS week	42	17-Oct		ATLAS week
17	25-Apr	Spring RRB		43	24-Oct	Autumn RRB	
18	02-May		05-May and 06 May closed	44	31-Oct	OFFLINE WEEK	
19	09-May	MINI WEEK		45	07-Nov	ALICE WEEK	
20	16-May		16-May closed	46	14-Nov		CMS week (outside CERN)
21	23-May			47	21-Nov		
22	30-May	LHCC week	Preview SQM	48	28-Nov	LHCC week	
23	06-Jun	MINI WEEK	IEEE RT	49	05-Dec		LHCb week
24	13-Jun	approval SQM	Council Week LHCP	50	12-Dec	MINI WEEK	Council Week
25	20-Jun		LHCb week, CMS week	51	19-Dec		CERN closure 22-Dec 2016 to 5-Jan-2017
				52	26-Dec		CERN closure 22-Dec 2016 to 5-Jan-2017

Planning



From JIRA to JIRAS



- We will have to setup another meta-project to follow up high level milestones in Offline related projects