



TE-MPE Group Meeting

11 December 2015

Outline

- MPE in numbers and MPE, organisation for 2016
- Safety
- MPE Sections activity highlights in 2015 (Section Leaders)
- New projects, priorities and main objectives for 2016



Stefania Sapountal
Group Secretary



Markus Zerlauth
Deputy Group Leader



Andrzej Sienko
MPE Group Leader



Knud Dahlerup-Petersen
Group Leader Advisor



Rüdiger Schmidt
Group Leader Advisor



Bruno Puccio
Technical Coordinator
and Group Leader
Support

Electronics for Protection



Reiner Oenz
MPE-EP Section Leader



Nicolas Bellego



Fabienne Boiser



Daniel Calcon



Vincent Froidbise



Spyridon Georgakakis



Jens Stackurt



Oliver Bitterling



Carlos Garcia Argos



Vito Vizzotto



Frederik Lindbeck

Machine Interlocks



Jan Uythoven
MPE-MI Section Leader



Yan Bastian



Geza Csendes



Pierre Dahlen



Stephane Gaboriau



Christophe Martin



Richard Mounpo



Bruno Puccio



Ivan Romero Ramirez



Christophe Von Steenbrun

Machine Protection Software



Markus Zerlauth
MPE-MS Section Leader
MPE-MS Group Leader



Zinour Charfouline



Marc-Antoine Gallie



Jean-Christophe Garnier



Serhij Boychenko



Kamil Irod



Maciej Olski



Roberto Orlando



Matthias Poeschl



Tiago Ribeiro



Marijo Dragic



Mateusz Kozca

Electrical Engineering



Félix Rodriguez Mateos
MPE-EE Section Leader



Mateusz Bedarek



Gerr-Jan Coedigh



Knud Dahlerup-Petersen



Giorgio D'Angelo



Arndt Cinius



Matthieu Favre



Joaquim Mourao



Stephen Pemberton



Grzegorz Seweryn



Pal Fery Juszties



Krzysztof Beran



Aleksandr Erokhin



Szymon Michniak



Bechdar Panev



Matej Mertik

Performance Evaluation



Arjan Verweij
MPE-PE Section Leader



Bernhard Auehmann



Michael Jonker



Rüdiger Schmidt



Daniel Wollmann



Laura Grob



Jomo Ghni



Michał Męciogęwał



Vivien Ragnel



Odel Ray Orozco



Oliver Stein



Andrea Apollonio



Lorenzo Bertot



Marco Piroli



Tobias Grismmer



David Kleven



Alejandro Fernandez Hernandez

Electronics Modules



Betty Maguin
MPE-EM Section Leader



Raphael Berberat



Stéphane Escoffier



Sylvain Kaufmann



Marlene Yuasa



Nicole Wausquier



Bastien GARAVAGLIA



Virginia GRECO

FSU



Claude Andreulet



William Billereux



Chantal Chervet



Jean-Louis Chouvet



Benoit Civel



Bernard Collaon



Jean-Marc Combe



Samuel Deleage



Sidi Mohamed El Bouckry



Damiana Lette



Malik Meaurio



Bruno Recordon



Maxime Ricci

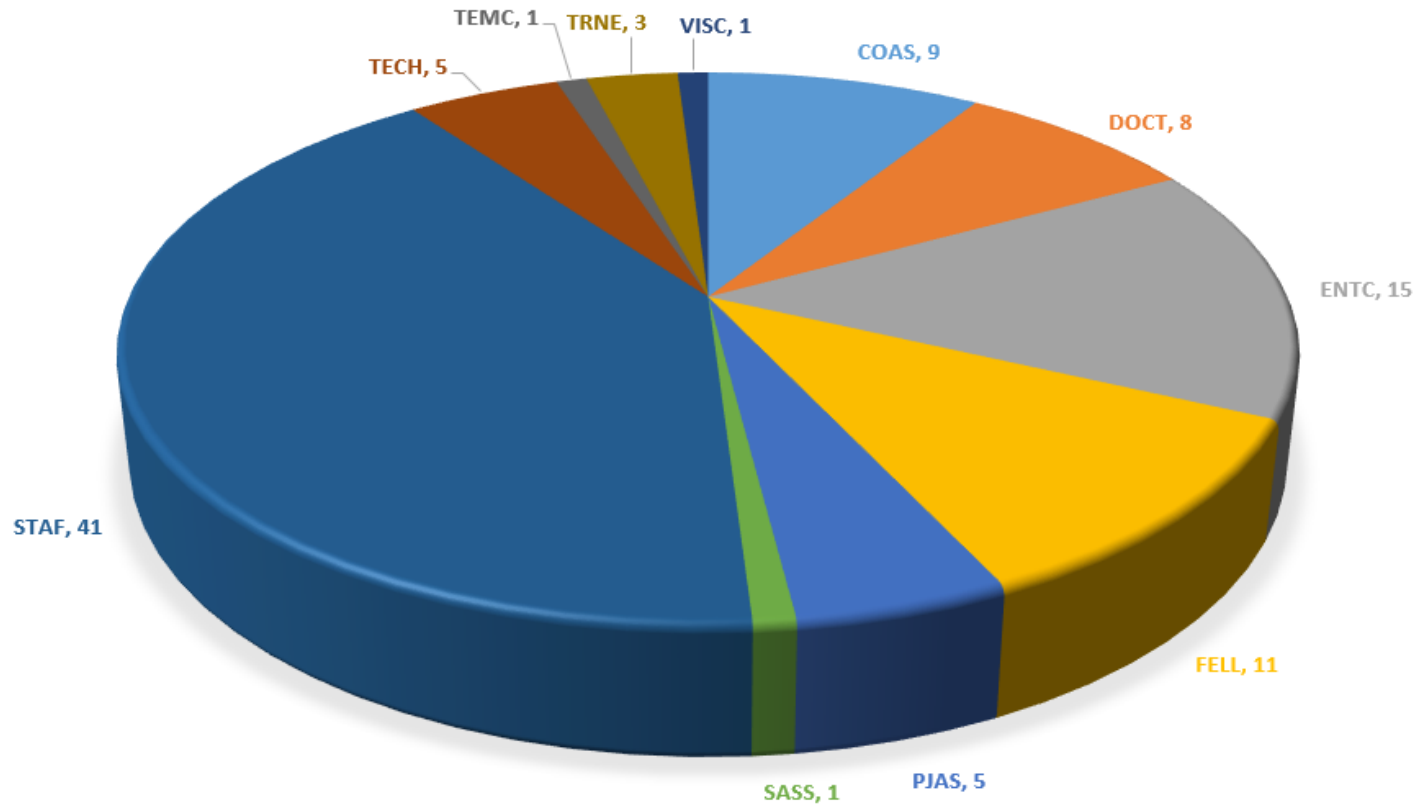


Pascal Vallez

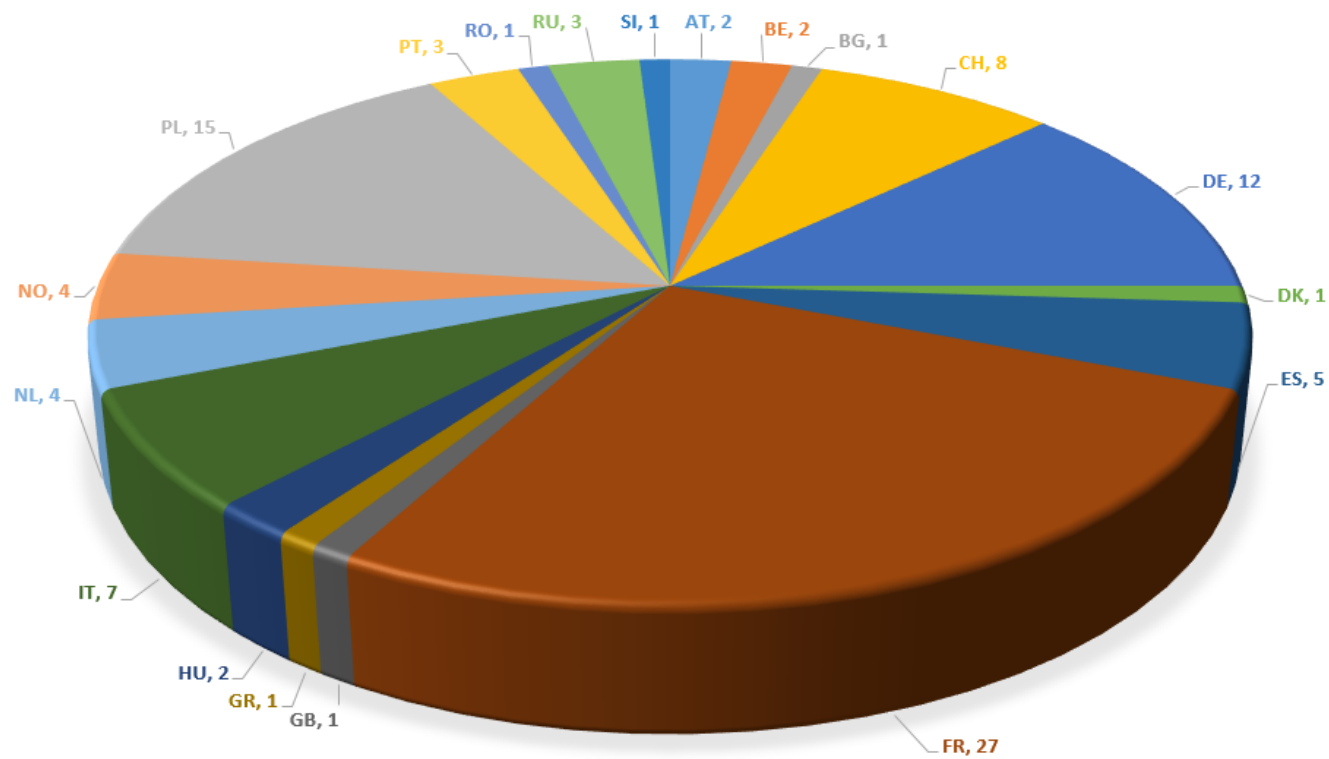


Jean-Marc Wickham

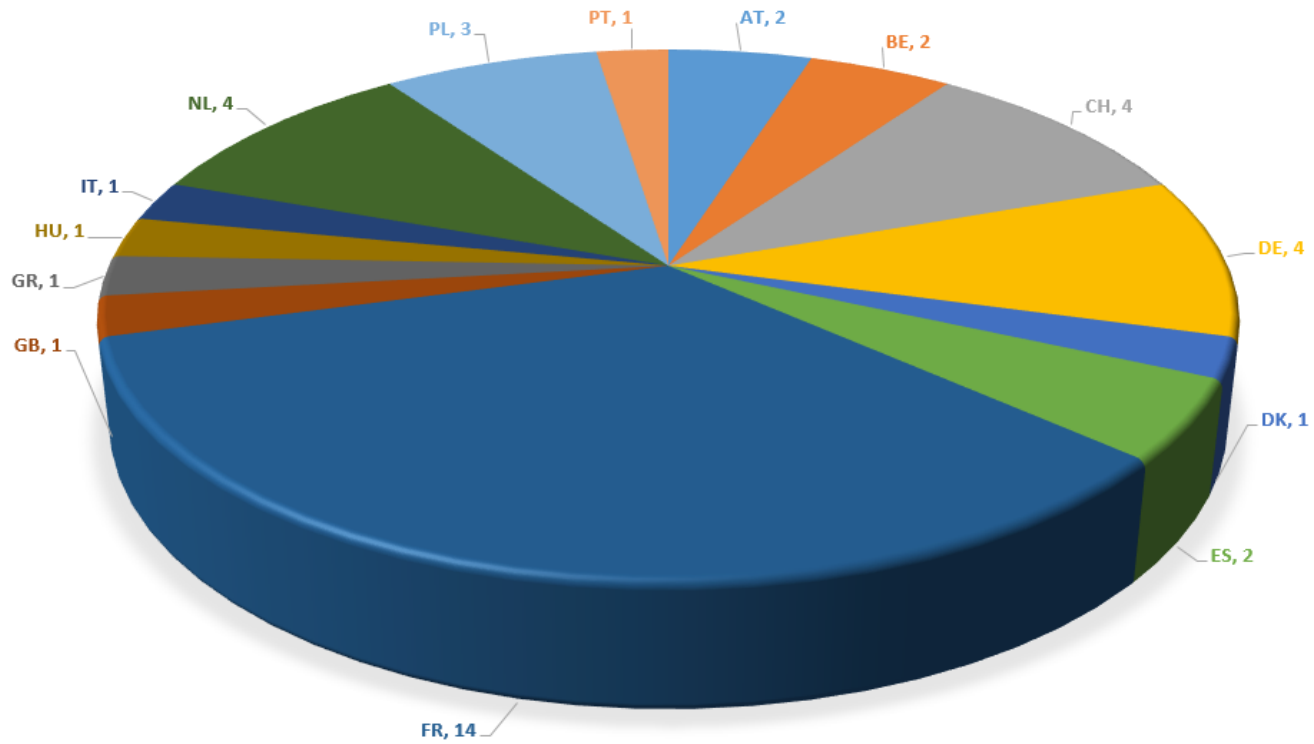
ALL MPE MEMBERS BY CATEGORY (101 TOTAL)



NATIONALITY DISTRIBUTION - ALL MPE MEMBERS



NATIONALITY DISTRIBUTION - STAFF ONLY



Arrivals 2015 – Staff Members



Marc-Antoine Galilee

MS Section



Geza Csendes

MS Section

Arrivals 2015 - Students

Odei Rey Orozco	Doctoral Student	PE Section
Jonas Ghini	Doctoral Student	PE Section
Tobias Griesemer	Technical Student	PE Section
Roberto Orlandi	Technical Student	MS Section
David Kleiven	Technical Student	PE Section
Matthias Pöschl	Technical Student	MS Section
Fredrik Lindseth	Technical Student	EP Section
Alejandro Fernandez Navarro	Trainee	PE Section
Tiago Martins Ribeiro	Trainee	MS Section

Arrivals 2015 - Fellows

Maciej Osinski	Fellow	MS Section
Pal Forr Austnes	Fellow	EE Section
Andrea Apollonio	Fellow	PE Section
Marco Prioli	Fellow	PE Section
Lorenzo Bortot	Fellow	PE Section
Virginia Greco	Fellow	PE Section
Bastien Garavaglia	Fellow	EM Section

Departures 2015 – THANK YOU!

Staff Members

Regine Couitti

Doctoral Students

Andrea Apollonio

Florian Burkart

Emmanuele Ravaioli

Scott Rowan

Technical Students

Christian Sorensen

Jakub Janczyk

Ondrej Picha

Magne Eik Lauritzen

Luke Barnard

Raphaela Heil

Deepak Paudel

Cesar Aguilera
Padilla

Fredrik Lindseth

Fellows

Maxime Audrain

Konstantinos
Stamos

Javier Gayo-Avello

Manuel Dominguez
Martinez

Vera Chetvertkova

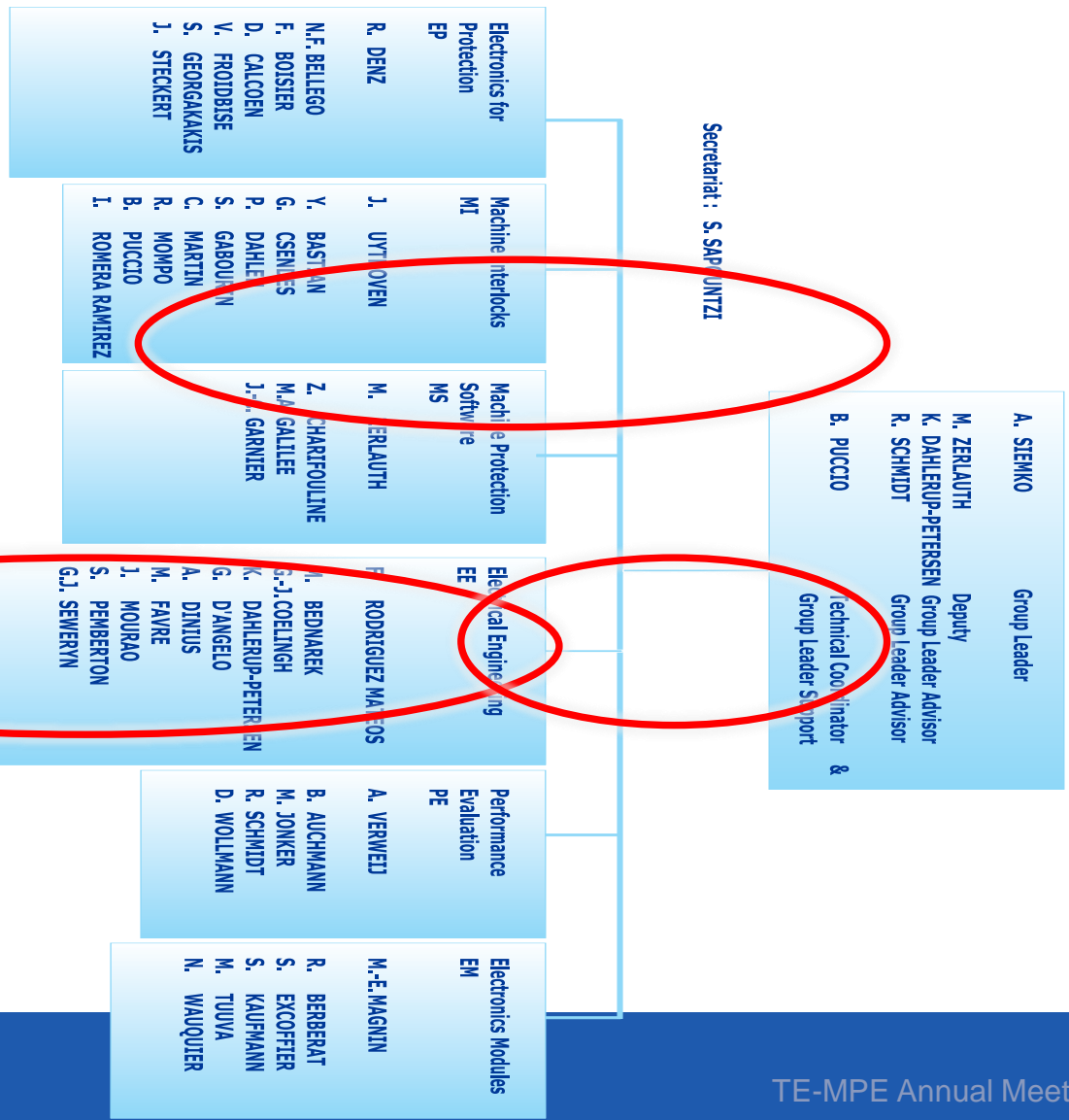
**... and all Project Associates from AGH and HNINP Cracow
who have provided their valuable support to TE-MPE during 2015!**

MPE Organisation Chart 2016

TE-MPE

Machine Protection & Electrical Integrity

Staff Members



January 2016



Mandate of MPE-MI Section

- Main responsibilities:
 - PIC and WIC and FMCM systems: CERN wide responsibility for these systems including definition of architecture and hardware, operation, maintenance and future development.
 - BIS and SMP systems: CERN wide responsibility for these systems including definition of architecture and hardware, operation, maintenance and future development of electronics in collaboration with the MPE-EP section.

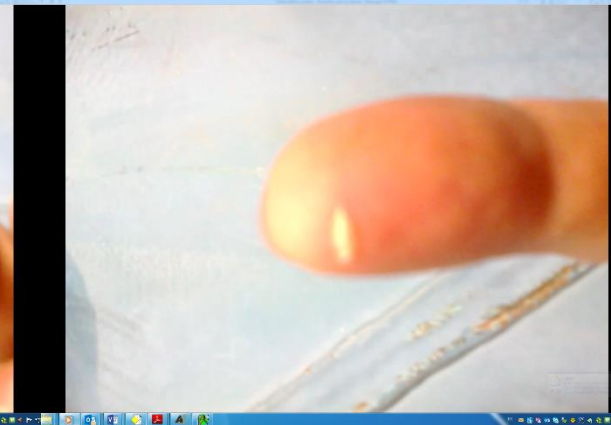
Safety

- We should always remember about F. Bordry's slogan:

“Safety First, Quality Second, Schedule Third”

Safety – worrying accident in 2016

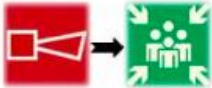
- **Electrical accident during CSCM card replacement campaign**
- **Several issues at the origin of this accident**
 - Coordination of co-activities
 - ELQA safety procedure
 - Safety self-awareness
 - Hardware design for personal safety
- **We must improve all 4 above aspects to make sure that HV electrical accidents are eliminated in future**




Safety is a key responsibility of everyone working at CERN !!

SAFETY BULLETIN 2013-1
August 2013


When the alarm rings, you must leave!




What happened
A fire alarm went off recently in one of the CERN restaurants at lunchtime. When the fire brigade arrived on the scene, they observed that hardly anyone had actually evacuated the building.



The consequences
Luckily, on this occasion the alarm was not the result of a serious incident. Yet, if a fire had really broken out, thick, toxic fumes would have rapidly spread throughout the premises. This would have represented a major risk for anyone who remained inside the building or was slow to react to the alarm, and could have led to fatalities.



What you must do
When an evacuation alarm goes off:
 > I must leave the premises immediately and follow the evacuation signs;
 > I must encourage anybody else present to do the same;
 > I must make my way to the nearest muster point;
 > I must await instructions from the Fire Brigade.
 Moreover, if you have not already done so, familiarise yourself with the evacuation plans in your building to locate the emergency exits and muster points. If there aren't any plans or if you have any questions, please get in touch with your TSO.
 Remember that only the Fire Brigade are authorised to access the level of seriousness of an alarm.



Safety Bulletin published by the HSE Unit
Version: 10/2012

Need more information on safety issues?
Contact us at: hs@cern.ch or contact your Departmental Safety Officer (DSO): www.cern.ch/dso

CERN
Corporate Health & Safety
and Environmental Protection Unit

SAFETY BULLETIN 2013-2
October 2013

Protect your head!



What happened
Several accidents have been reported in recent months due to people not wearing protective headgear in areas where safety helmets are compulsory or in work places where the obligation to wear a safety helmet presents difficulties. The victims sustained impacts to the head from protruding elements (bars, angles, steel plates), etc. when standing up or moving around in their work place.



The consequences
The injuries associated with these accidents include cuts, lacerations and bruises to the scalp, some requiring stitches.



What you must do
When working in or passing through areas with safety helmets it is compulsory, you must wear CERN stores, compliant with at least one of the specifications for industrial safety helmets: « 1 industrial helmet ».
 Should the wearing of the safety helmet be plus the work place, the wearing of bump caps** is mandatory. Safety helmets therefore remain compulsory.
** Approved for use only in the CERN stores, not for use elsewhere.

Need more information on safety issues?
Contact us at: hs@cern.ch or contact your Departmental Safety Officer (DSO): www.cern.ch/dso

CERN
Corporate Health & Safety
and Environmental Protection Unit

SAFETY BULLETIN 2013-3
November 2013

Drive with caution!



What happened
Many instances of dangerous driving by members of the CERN personnel or contractors personnel have been observed on the routes to Thoiry during the Month and February sites. There have been several accidents and near-misses this year. The latest incident involved a vehicle being driven on the wrong side of the road, forcing drivers traveling in the opposite direction to brake sharply.



The consequences
Fortunately nobody was injured in the latest incident as the other driver was able to brake in time and the driver of the vehicle concerned veered back onto the right side of the road at the last moment, thereby avoiding a head-on collision, which would have had very serious consequences.



Accident ? Call the Fire Brigade !



Aware and Responsible