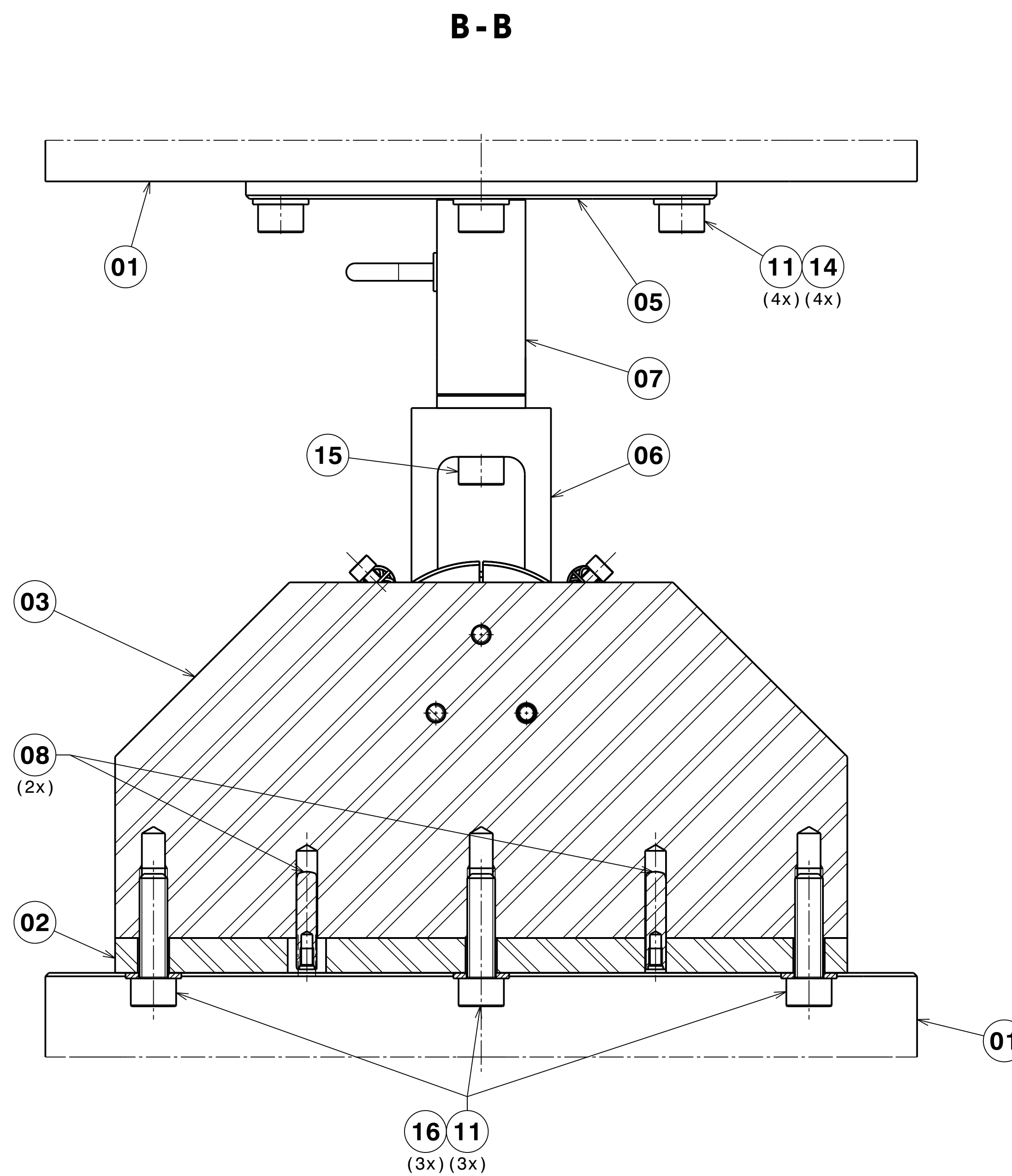
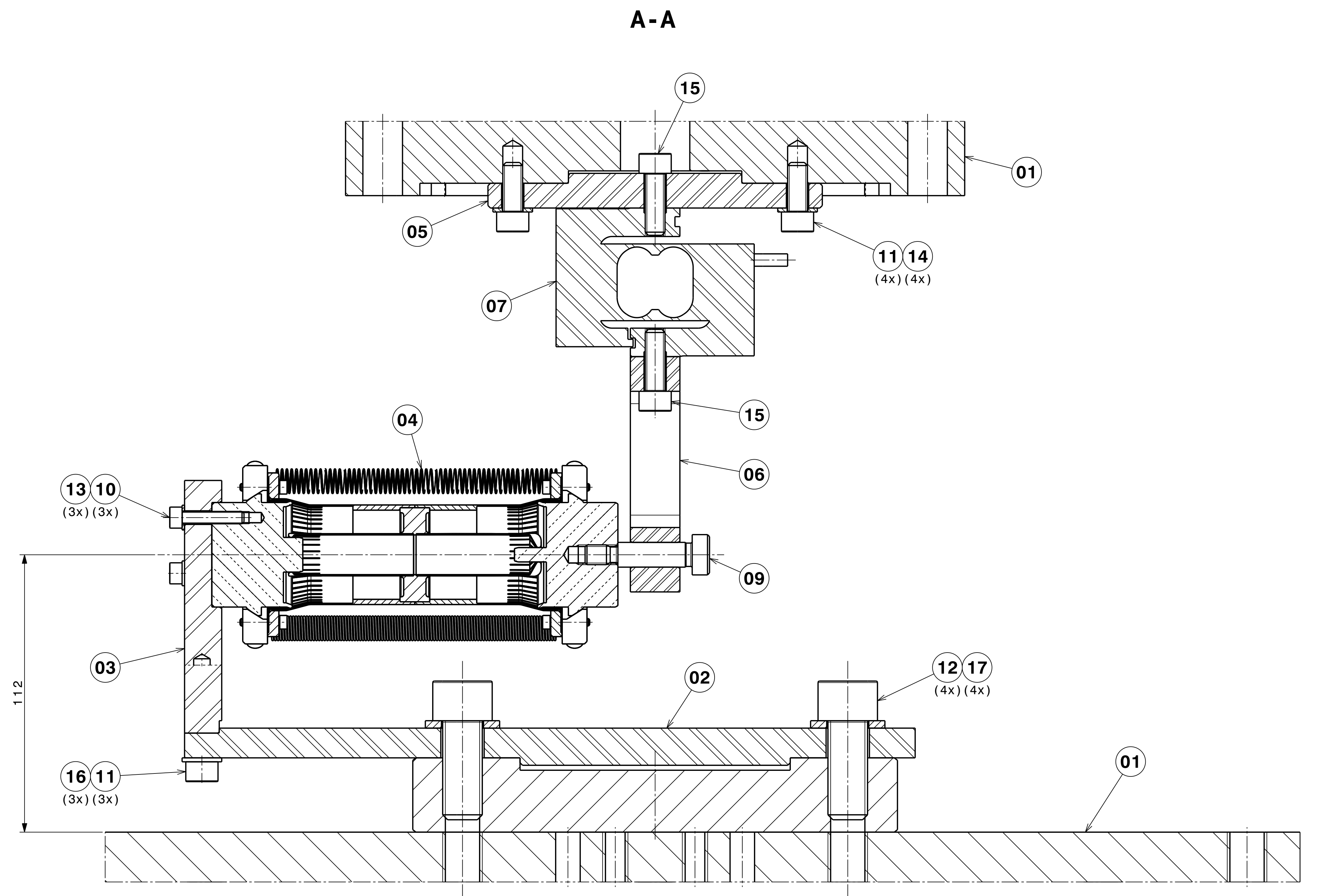
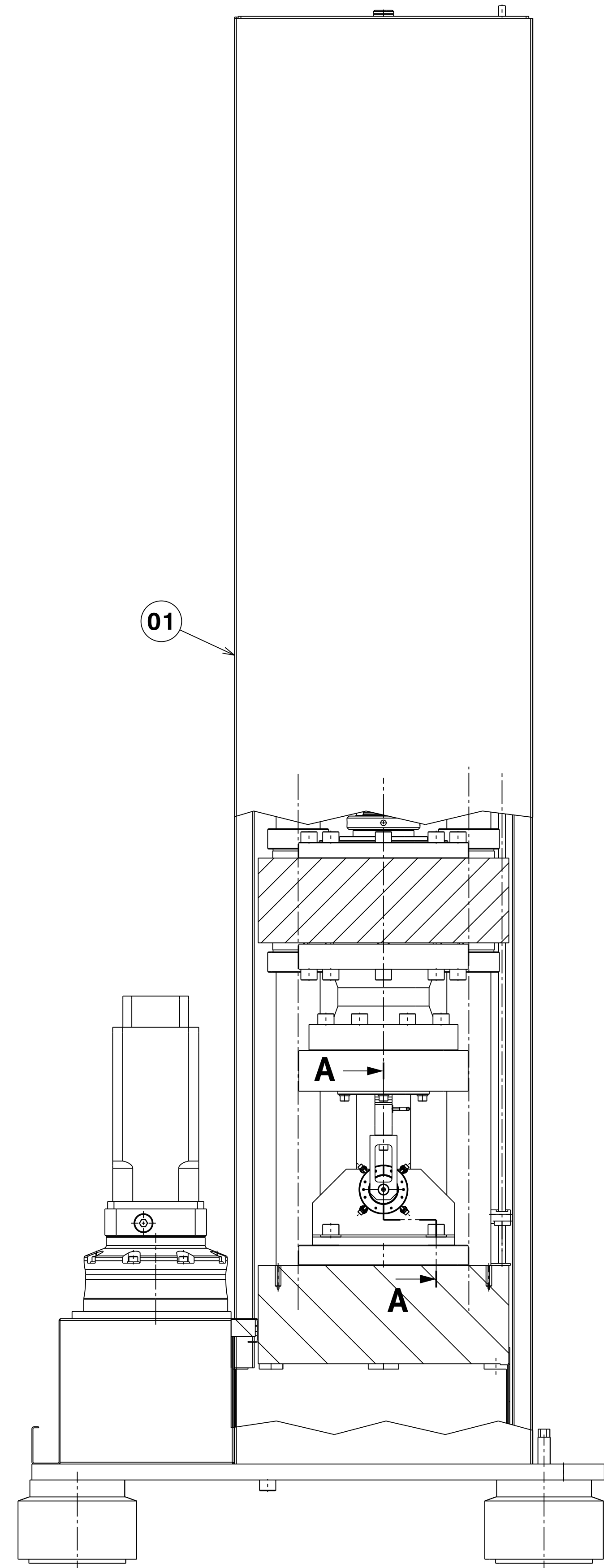
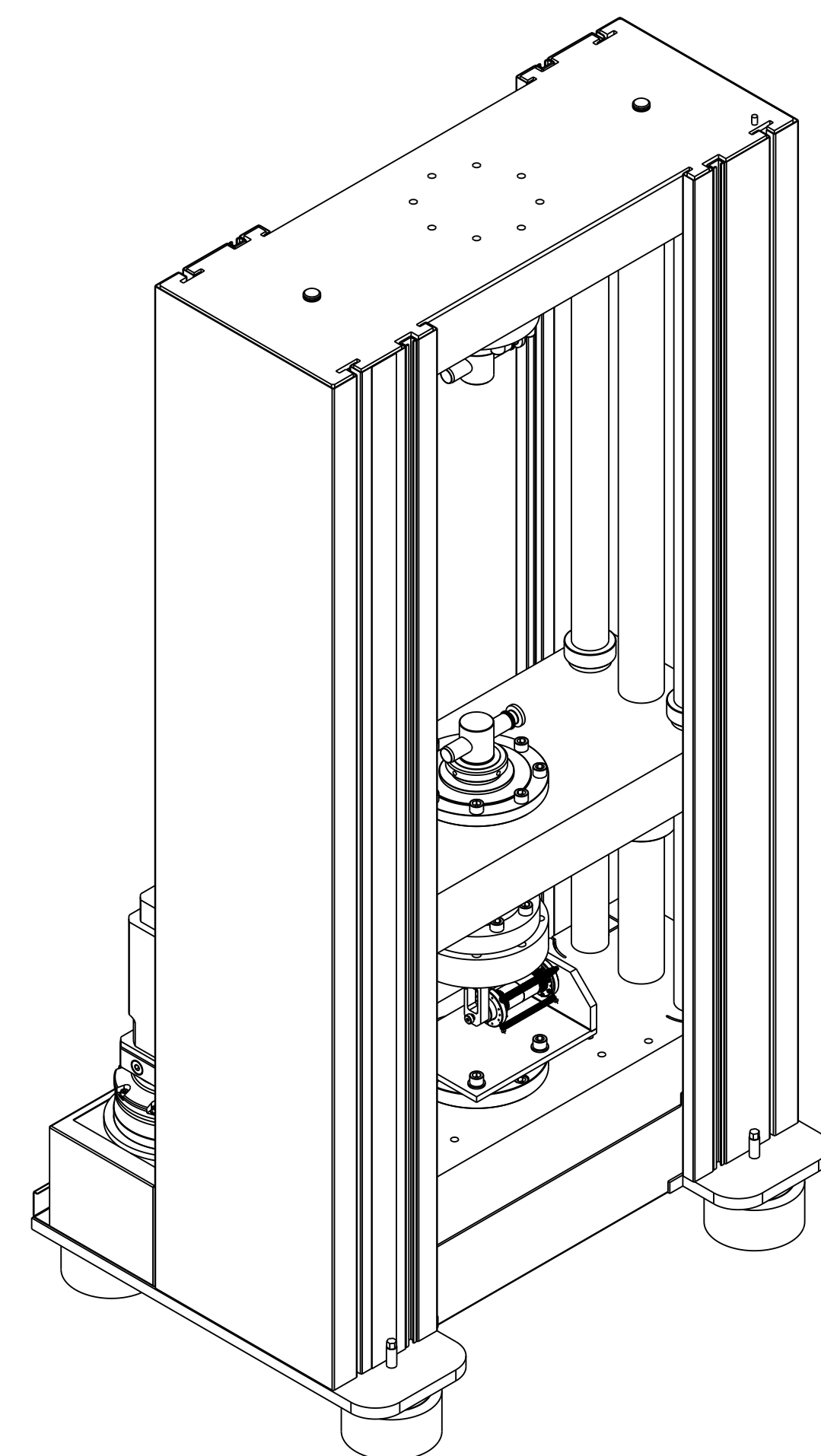


**ISOMETRIC VIEW**  
NO SCALE



- ASSEMBLY SEQUENCE :**
- 1 - ASSEMBLE ITEMS 02, 03 AND 04 TOGETHER.
  - 2 - INSTALL THE RESULTING SUB-ASSEMBLY ON THE LOWER PART OF THE TRACTION MACHINE (ITEM 01).
  - 3 - ASSEMBLE ITEMS 05, 06 AND 07 TOGETHER  
BE CAREFUL : SCRUPULOUSLY RESPECT THE MAXIMAL ADMISSIBLE TORQUE OF 15 Nm APPLICABLE ON THE SCREWS ITEMS 15 TO AVOID DAMAGING THE SENSOR (ITEM 07).
  - 4 - INSTALL THE RESULTING SUB-ASSEMBLY ON THE UPPER PART OF THE TRACTION MACHINE (ITEM 01).
  - 5 - MOVE THE UPPER PART OF THE TRACTION MACHINE IN ORDER TO ALIGN THE  $\phi 10$  HOLE OF THE ITEM 06 WITH THE HOLE LOCATED AT THE END OF THE ITEM 04 AND INSTALL THE ADJUSTED SHOULDERED SCREW ITEM 09.

UNLESS OTHERWISE MENTIONED, APPLICABLE ISO GPS STANDARDS ARE THOSE PRIOR TO 2010-08-01 REGARDLESS OF THE DRAWING DATE

QNA	DESCRIPTION	POS	MAT.	OBSERVATIONS	REF. CERN
4	HEX SKT HD CAP SCREW M16x40	17	Steel 8.8	ISO 4762_M16x40-8.8-AOC	
	VIS CHC M16x40			Zingue, jaune dichromate   2x yellow dchr	
3	HEX SKT HD CAP SCREW M8x30	16	Steel 8.8	ISO 4762_M8x30-8.8-AOC	
	VIS CHC M8x30			Zingue, jaune dichromate   2x yellow dchr	
2	HEX SKT HD CAP SCREW M8x25	15	Steel 8.8	ISO 4762_M8x25-8.8-AOC	
	VIS CHC M8x25			Zingue, jaune dichromate   2x yellow dchr	
4	HEX SKT HD CAP SCREW M8x20	14	Steel 8.8	ISO 4762_M8x20-8.8-AOC	
	VIS CHC M8x20			Zingue, jaune dichromate   2x yellow dchr	
3	HEX SKT HD CAP SCREW M5x25	13	Steel 8.8	ISO 4762_M5x25-8.8-AOC	
	VIS CHC M5x25			Zingue, jaune dichromate   2x yellow dchr	
4	NORMAL PL. WASHER 16x30	12	Steel Black oxidized	ISO 7089_16x30-St-Bk	
	RONDELLE PLATE NORMALE 16x30		Acier noir oxyde		
7	NORMAL PL. WASHER 8x16	11	Steel Black oxidized	ISO 7089_8x16-St-Bk	
	RONDELLE PLATE NORMALE 8x16		Acier noir oxyde		
3	NORMAL PL. WASHER 5x10	10	Steel Black oxidized	ISO 7089_5x10-St-Bk	
	RONDELLE PLATE NORMALE 5x10		Acier noir oxyde		
1	Hex Skt Should $\phi 10$ x30 M8 ISO 7379	9	Steel 12.9	HPC : HSSB-30	
	Vis Epaulée Chc $\phi 10$ x30 M8 ISO7379			ST0739721	
2	Extractable Pin $\phi 6$ x28 DIN 7979 D	8	Steel	Bossard : BN 1970 (1431080)	
	Groupille Taraudee $\phi 6$ x28 DIN 7979 D			ST0737345	
1	Force Transducer HW S2W 1000N	7	Aluminum	HWB = 1 S2W/1000N-1	
	Capteur de Force HW S2W 1000N			ST0740504	
1	LINK PLATE	6	Alu EN AW-6082	LHCACFR0011	
	PLAQUE RACCORD		(TE)	ST0740660	
1	UPPER INTERFACE DISC	5	Alu EN AW-6082	LHCACFR0012	
	DISQUE INTERFACE SUPERIEURE		(TE)	ST0740631	
1	COAX PROTOTYPE - MECH TEST BENCH	4		LHCACFR0010	
	PROTO COAX-BANC D'ESSAI MECANIQUE			ST0736827	
1	TEST BENCH VERTICAL PLATE	3	Alu EN AW-6082	LHCACFR0013	
	PLAQUE VERTICALE BANC D'ESSAI		(TE)	ST0737328	
1	TEST BENCH BASEPLATE	2	Alu EN AW-6082	LHCACFR0014	
	EMBASE BANC D'ESSAI		(TE)	ST0737258	
1	Traction Machine ZwickRoell Z400	1		ZWICK ROELL : Z400S	
	Machine Traction ZwickRoell Z400			ST0743728	

ENS/ASS	S. ENS/S. ASS	SCALE	DATE
		1:5	2016-02-05

MECHANICAL TEST BENCH  
TRACTION TEST INSTALLATION  
BANC DE TEST MECANIQUE  
INSTALLATION ESSAI TRACTION  
LHCACFR0015

MASS : 6,19 Kg  
(TRACTION MACHINE NOT INCLUDED)

NON VALABLE POUR EXECUTION  
NOT VALID FOR EXECUTION  
LHCACFR0015