

# Reliability and Availability of the T1 sites during the Christmas Period: ALICE report

WLCG-MB, CERN 27-01-09

Patricia Méndez Lorenzo

# SAM framework for ALICE: last news

---

- ▶ Establishment of a collaboration with VECC-T2 site (India) for the improvement and maintenance of the SAM structure for the ALICE experiment
  - ▶ Based on the good experiences gained in the past while creating the SAM-VOBOX test environment for ALICE
  - ▶ Defined again in November 2008
  - ▶ November-December 2008 achievements:
    - ▶ Documentation of the SAM-VOBOX test suite for ALICE
    - ▶ Migration of the CE sensor tests from RB to WMS submission mode
  - ▶ Future plans:
    - ▶ Creation of a WMS sensor test suite
    - ▶ (Proposed already during the F2F MB meeting in November 2008)



# December 2008 results

## ► Good results for all T1 sites in Dec'08



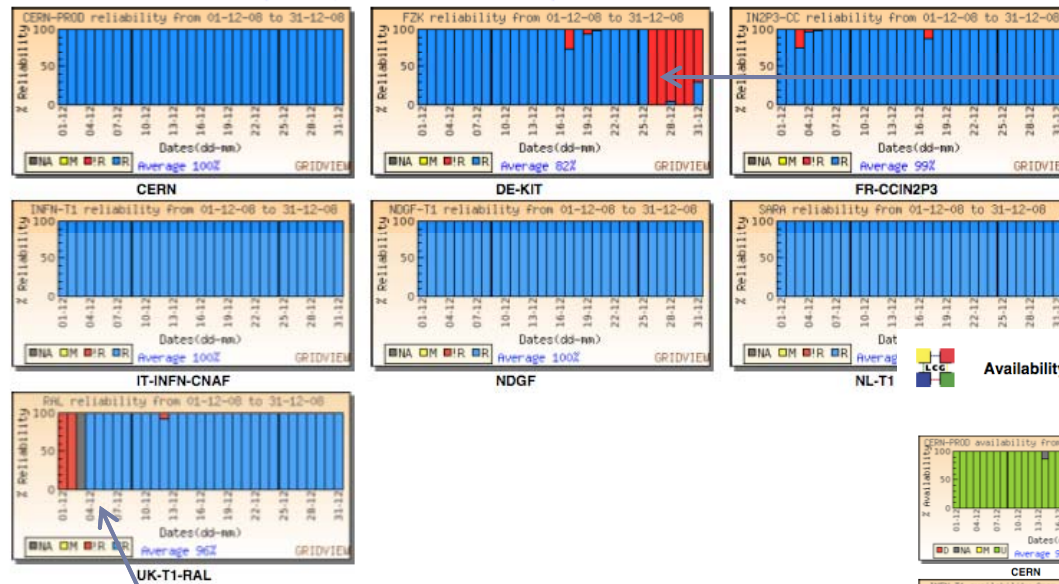
### Reliability of WLCG Tier-1 Sites + CERN for ALICE

December 2008

Data from SAM Monitoring.

Reliability is calculated as  $\text{time\_site\_is\_available} / (\text{total\_time} - \text{time\_site\_is\_scheduled\_down})$

Target reliability for each site is 95 % and Target for 8 best sites is 97 %



FZK instabilities during one week in December

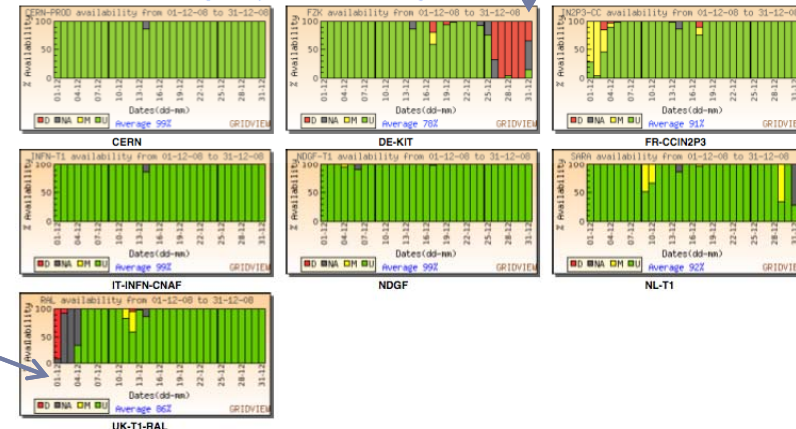
### Availability of WLCG Tier-1 Sites + CERN for ALICE

December 2008

Data from SAM Monitoring.

Availability is calculated as  $\text{time\_site\_is\_available} / \text{total\_time}$

Target availability for each site is 95 % and Target for 8 best sites is 97 %



RAL instabilities during few days in December



# FZK Status

---

- ▶ SAM reported errors asociated to the CE sensor related to the job submission test (CT for ALICE)
  - ▶ Affecting all CEs at the site
    - ▶ ce-[1...5]-fzk.gridka.de
    - ▶ Period from 26/12 until 31/12
    - ▶ ce-4 was declared in scheduled downtime from 22/12 until the 07/01
    - ▶ The SAM report shows a problem associated to the local queue

```
---
Event: Done
- Arrived                = Fri Dec 26 20:30:52 2008 CET
- Exit code               = 1
- Host                    = wms103.cern.ch
- Reason                  = Got a job held event, reason: Unspecified gridmanager error
- Source                  = LogMonitor
- Src instance            = unique
- Status code             = FAILED
- Timestamp               = Fri Dec 26 20:30:50 2008 CET
- User                    = /DC=ch/DC=cern/OU=Organic
Units/OU=Users/CN=pmendez/CN=477458/CN=Patricia Mendez Lorenzo/CN=proxy/CN=proxy
---
Event: Done
- Arrived                = Fri Dec 26 20:31:43 2008 CET
- Exit code               = 1
- Host                    = wms103.cern.ch
- Reason                  = Job got an error while in the CondorG queue.
- Source                  = LogMonitor
- Src instance            = unique
- Status code             = FAILED
- Timestamp               = Fri Dec 26 20:31:42 2008 CET
- User                    = /DC=ch/DC=cern/OU=Organic
Units/OU=Users/CN=pmendez/CN=477458/CN=Patricia Mendez Lorenzo/CN=proxy/CN=proxy
---
```

- Corresponding to the 26th of December
- ce-2-fzk.gridka.de (Similar results for the rest of the queues)
- Job was properly assigned by the WMS

# Question associated to SAM

- ▶ Status of FZK (site with 5 CEs) during Dec08
  - ▶ At a certain point the situation of FZK was the following:

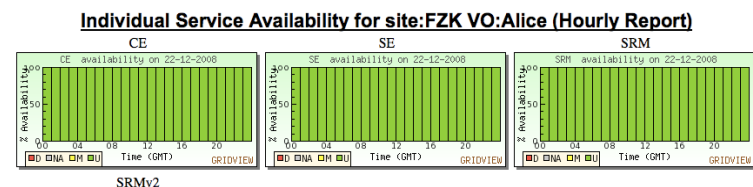
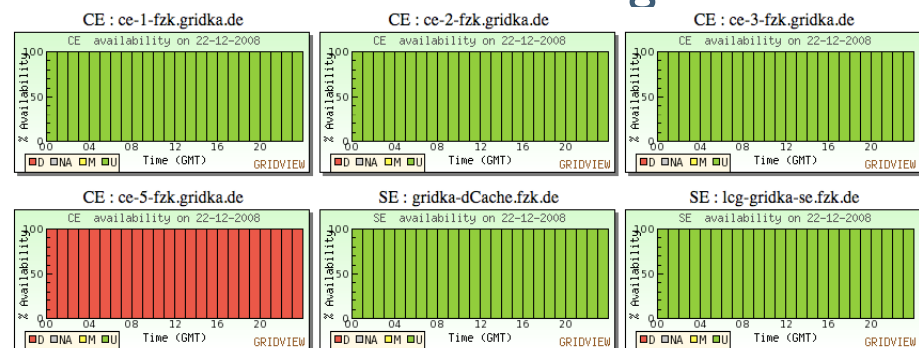
- ▶ 3 CEs properly running
  - ▶ 1 CE fully down
  - ▶ 1 CE in scheduled downtime

- ▶ The final status of the site at that point was fully available (from the CE sensor point of view)

- ▶ It seems that it is enough one CE

at the site properly running to consider the site as fully available

- ▶ At the same level that any other site with the whole bunch of CEs properly working



SRMv2

# RAL Status

---

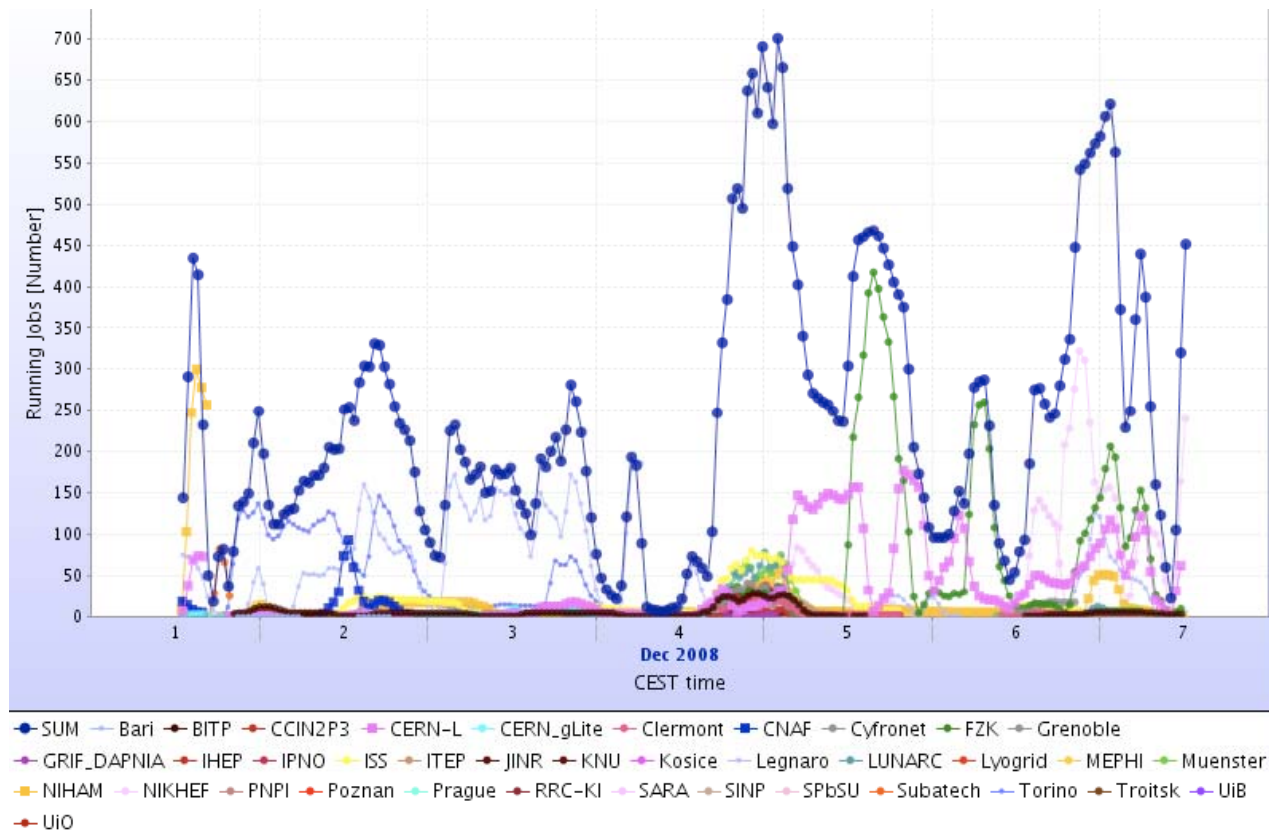
- ▶ RAL had some issues at the beginning of the Dec'08 during some few days

```
Event: Done
- exit_code      = 1
- host           = rb113.cern.ch
- level          = SYSTEM
- priority       = asynchronous
- reason         = Got a job held event, reason: Globus error 131: the user proxy
expired (job is still running)
- seqcode       =
UI=000003:NS=0000000003:WM=000004:BH=0000000000:JSS=000003:LM=000007:LRMS=000000:APP=000000
- source        = LogMonitor
- src_instance   = unique
- status_code    = FAILED
- timestamp     = Mon Dec 1 01:10:10 2008
- user          = /DC=ch/DC=cern/OU=Organic
Units/OU=Users/CN=pmendez/CN=477458/CN=Patricia Mendez Lorenzo
---
Event: Done
- exit_code      = 1
- host           = rb113.cern.ch
- level          = SYSTEM
- priority       = asynchronous
- reason         = Job got an error while in the CondorG queue.
- seqcode       =
UI=000003:NS=0000000003:WM=000004:BH=0000000000:JSS=000003:LM=000009:LRMS=000000:APP=000000
- source        = LogMonitor
- src_instance   = unique
- status_code    = FAILED
- timestamp     = Mon Dec 1 01:10:27 2008
- user          = /DC=ch/DC=cern/OU=Organic
Units/OU=Users/CN=pmendez/CN=477458/CN=Patricia Mendez Lorenzo
---
```

- User Proxy problem observed at the queue
- Job properly submitted by the RB, began to see the problems at the CE level

# RAL effects for the ALICE production

- ▶ No ALICE jobs beeing executed at the site at that moment



# Conclusions

---

- ▶ Although not running a large number of jobs, ALICE was in production at that time
- ▶ T1 stability in Dec.08 was very good for ALICE
  - ▶ The T1 support was efficient (as usual)
- ▶ Dec08 running period - mostly WMS related issues - presented at GDB in January, being addressed
- ▶ The inclusion of a new sensor related to the WMS and the setup of the CREAM-CE at all sites are the most important goals of the experiment at this moment

