

Status: pedestal

Jie Yu

Iowa State University

March 25, 2016



# Pedestal estimation

O	O	O
O	X	O
O	O	O

- For every  $3 \times 3$  sensors, calculate the T of the center  $X$  and around  $O$ .
- The distribution of  $\Delta R_X$ , hence  $(P_X - \langle P \rangle_0)$  with temperature at  $-20^\circ\text{C}$  to  $50^\circ\text{C}$  in March 23 and  $-20^\circ\text{C}$  to  $70^\circ\text{C}$  in April 7.

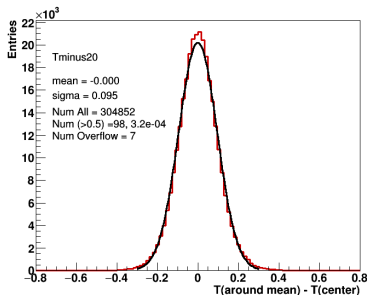
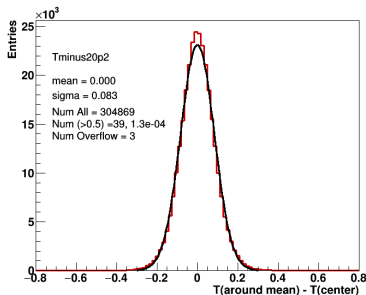
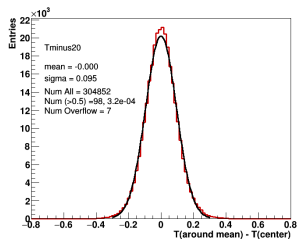


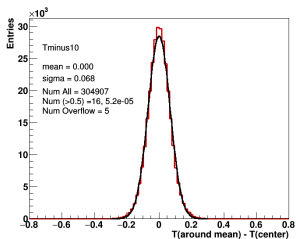
Figure: Left: pedestal of  $T = -20^\circ\text{C}$  in March 23, Right: same in April 7.



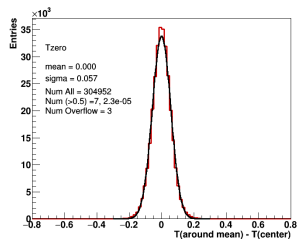
# Pedestal at various temperature (1)



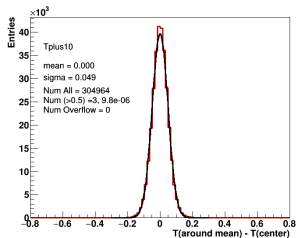
$T = -20^\circ\text{C}$



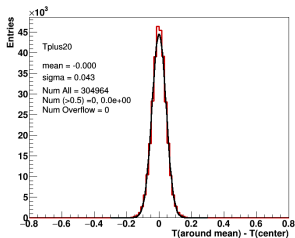
$T = -10^\circ\text{C}$



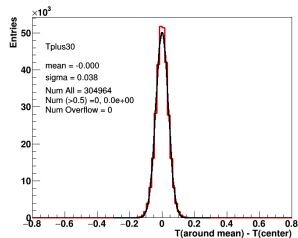
$T = 0^\circ\text{C}$



$T = 10^\circ\text{C}$

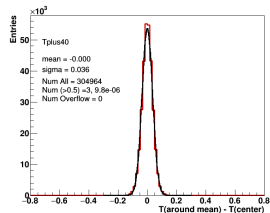


$T = 20^\circ\text{C}$

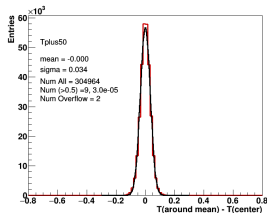


$T = 30^\circ\text{C}$

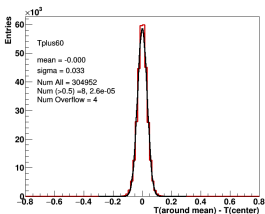
# Pedestal at various temperature (2)



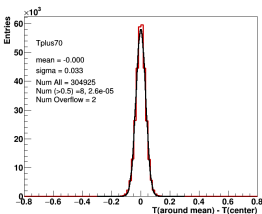
T=40°C



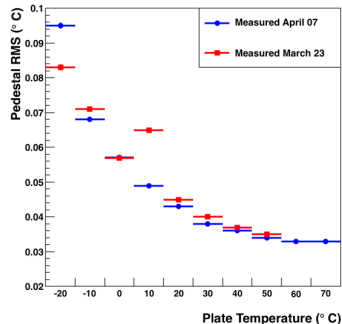
T=50°C



T=60°C



T=70°C



- Pedestal decreases when temperature increases with updated experiments on April 07.

