

New Chiller, New Stave: first look

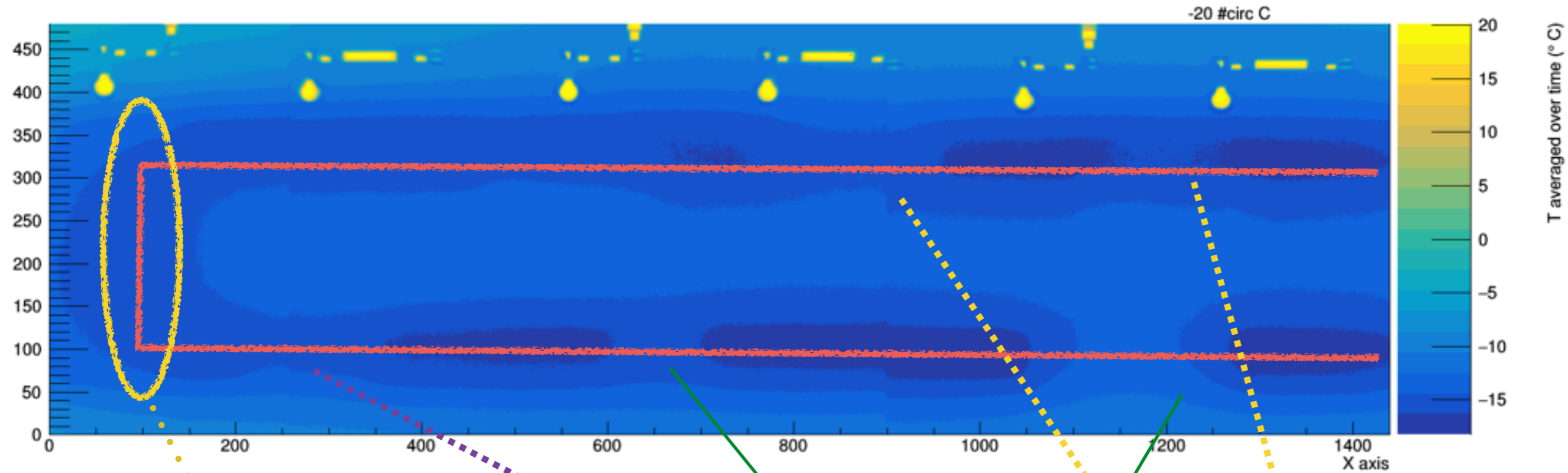
Jie Yu

Iowa State University

Stave QC discussion, June.23.2016

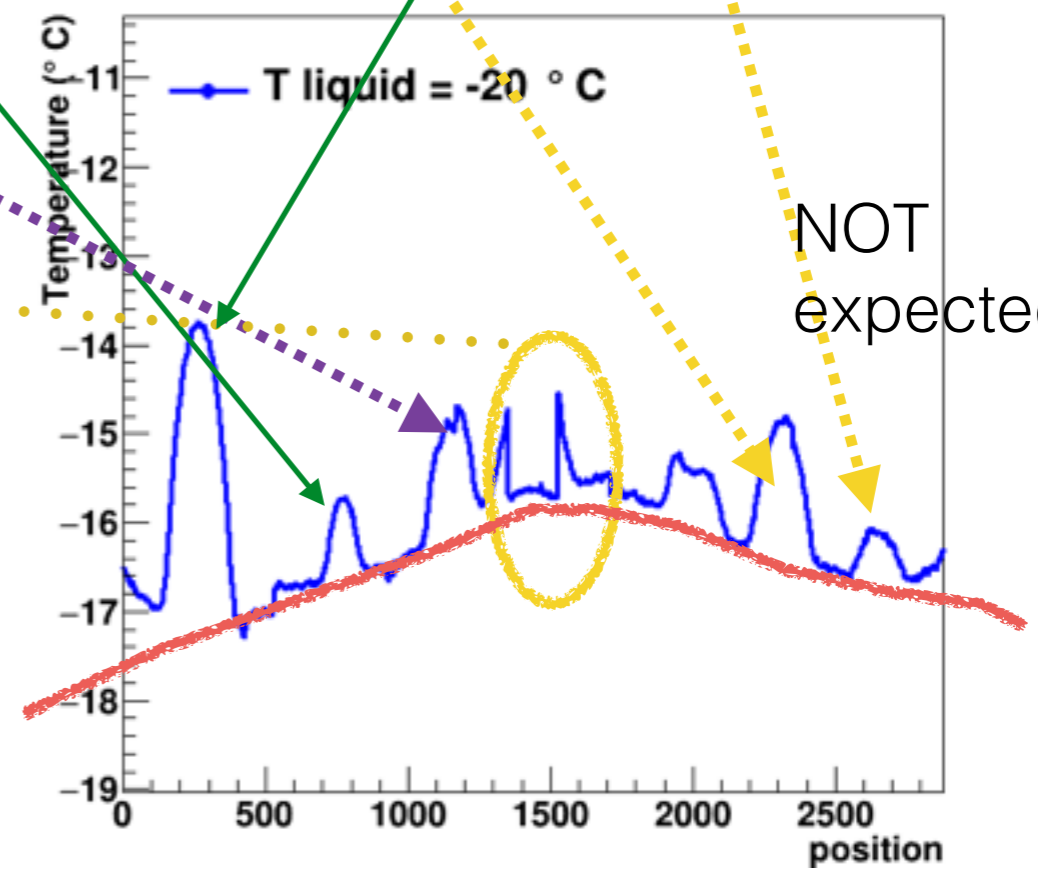


Last week: cooling pipes at -20 C

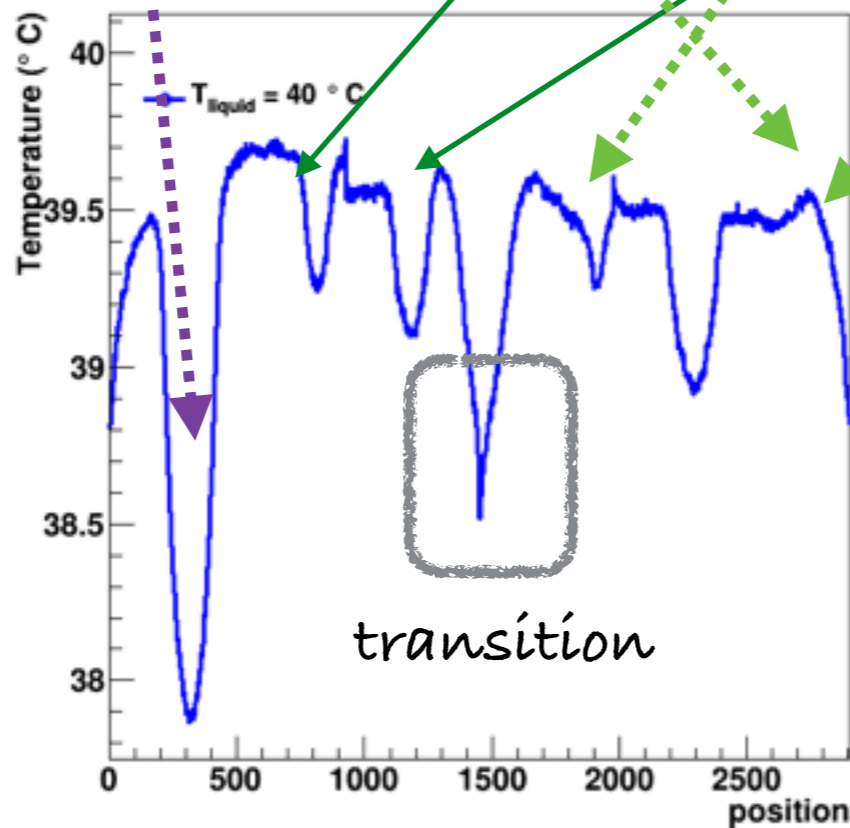
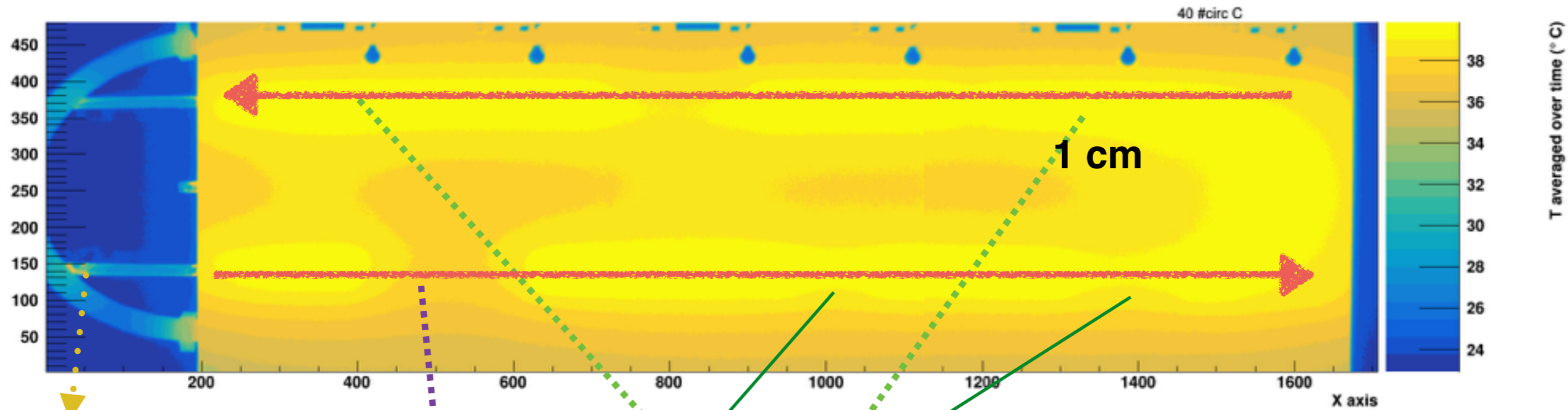


Not well chosen turning area

Cooling pipe temperature not as expected (going up)!



This week: cooling pipes at +40 C

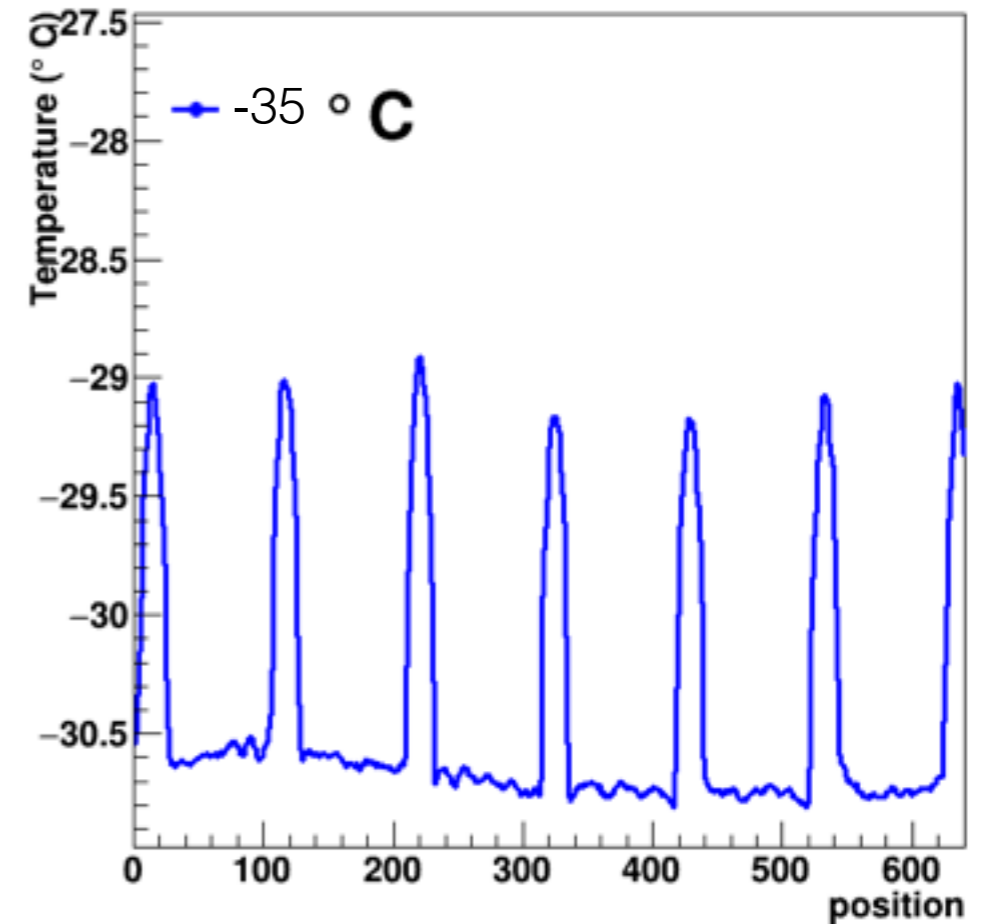
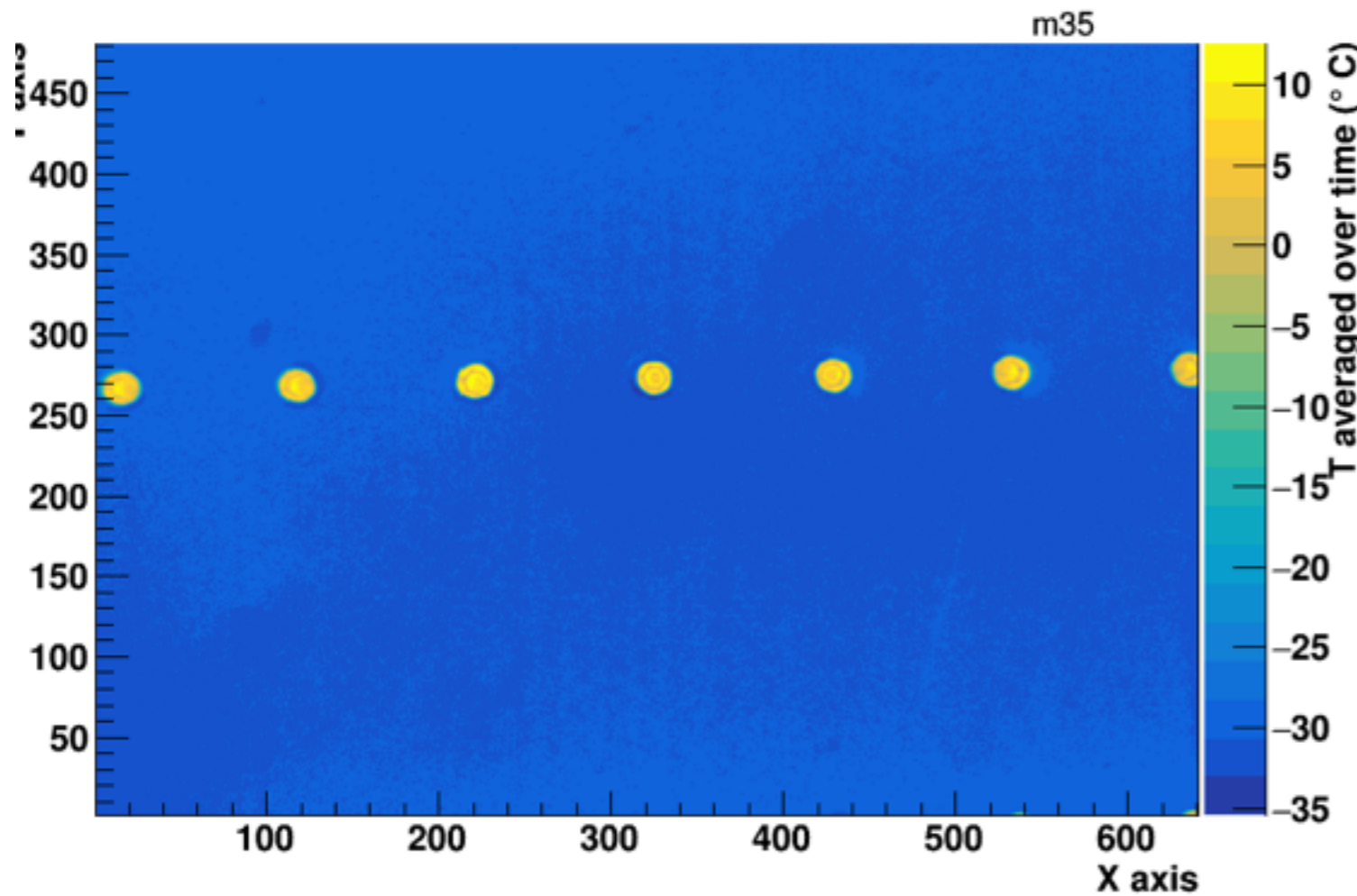
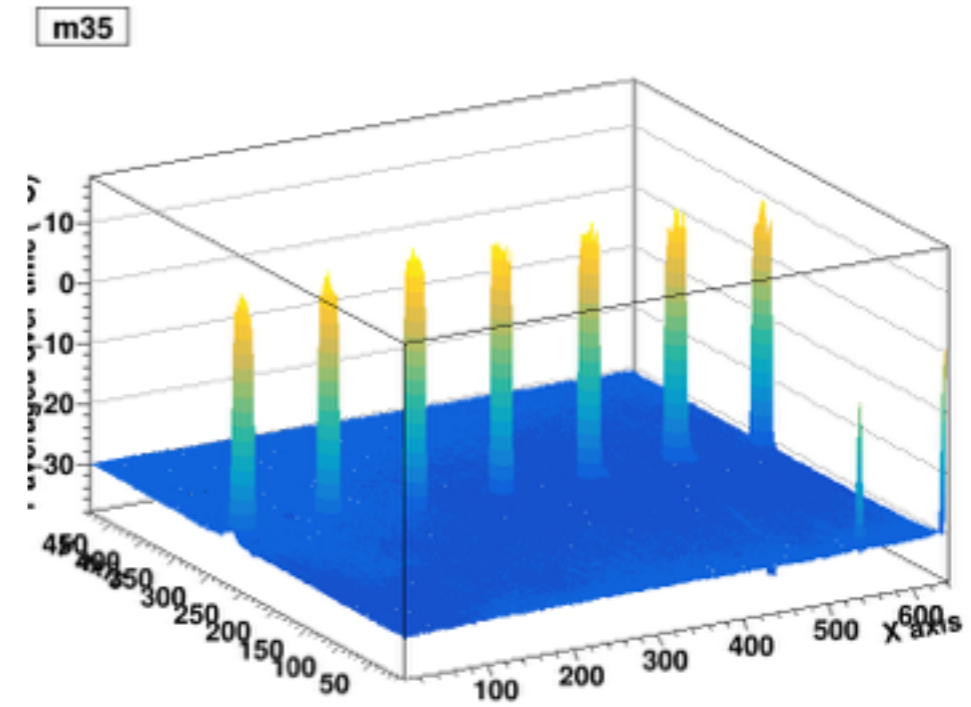


NOT expected: positive peak, probably on the other side?

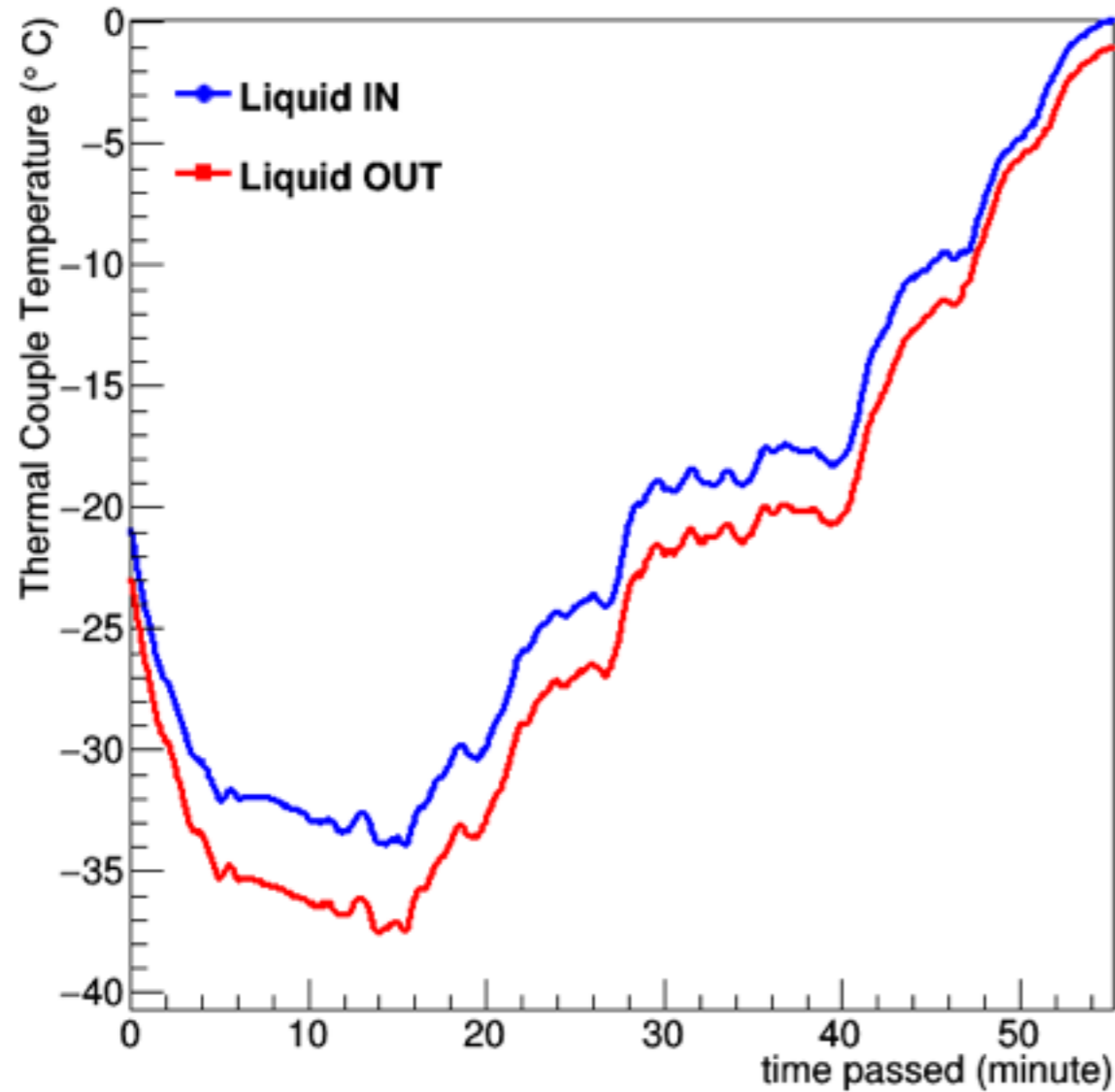
Painted plate



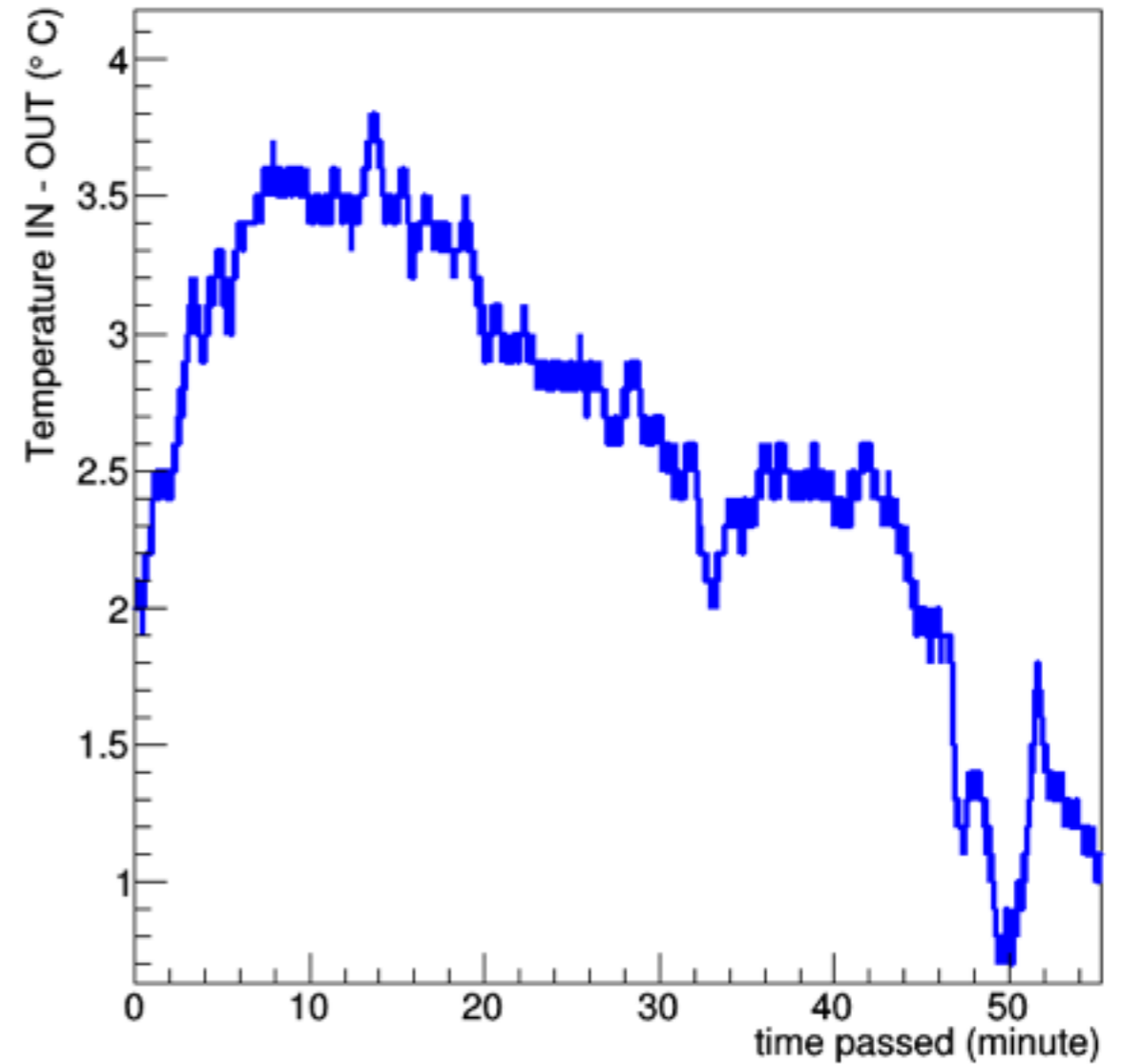
Plate $T = -35$ C, looks rather flat in T



Thermal Couple Temperature



Thermal Couple T measurement,
IN vs. OUT



Difference
IN — OUT

- Lower T => higher difference