

Update:
Long Stave at high temperature
peak finder

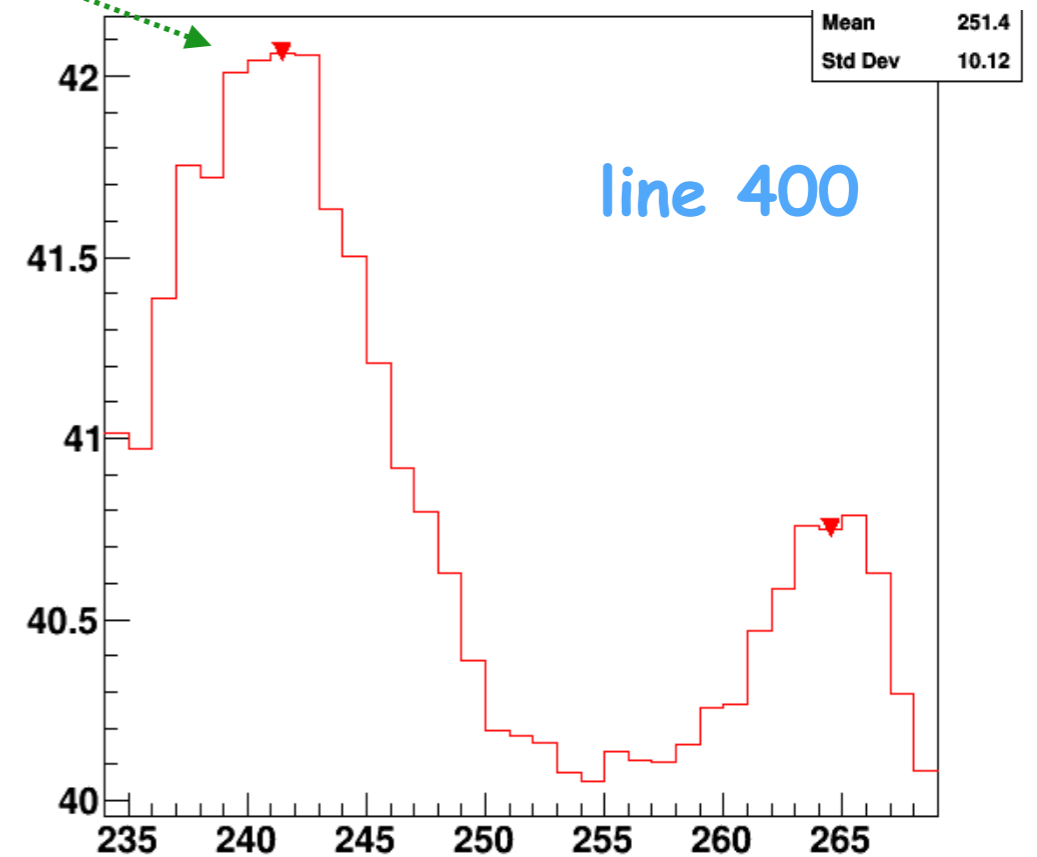
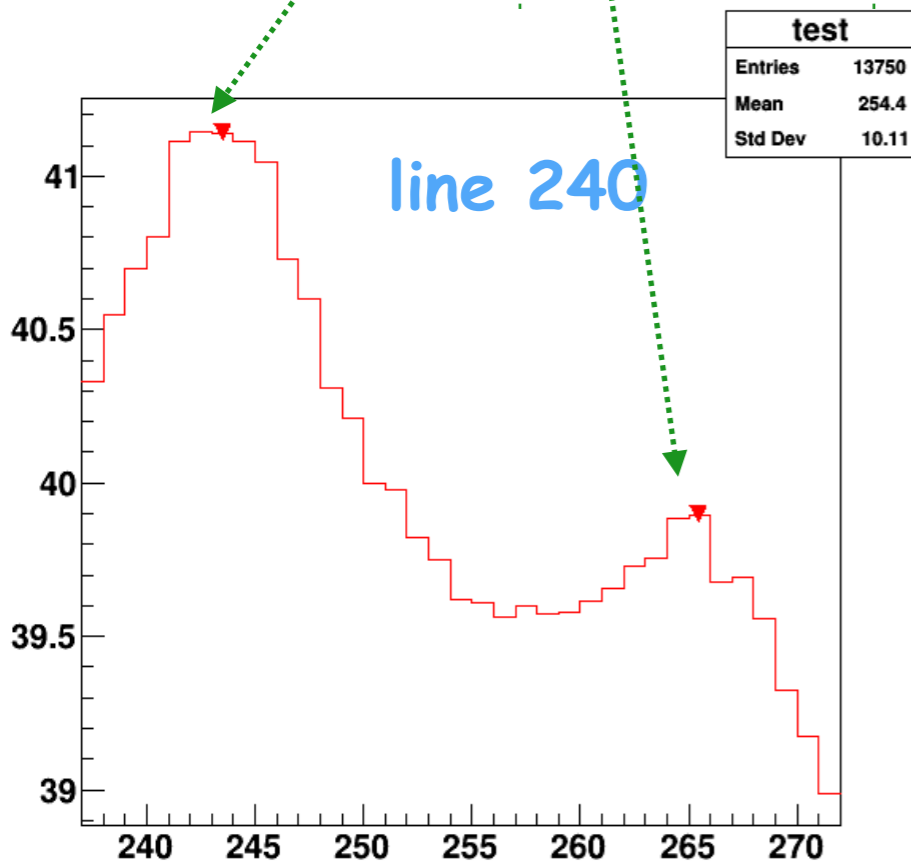
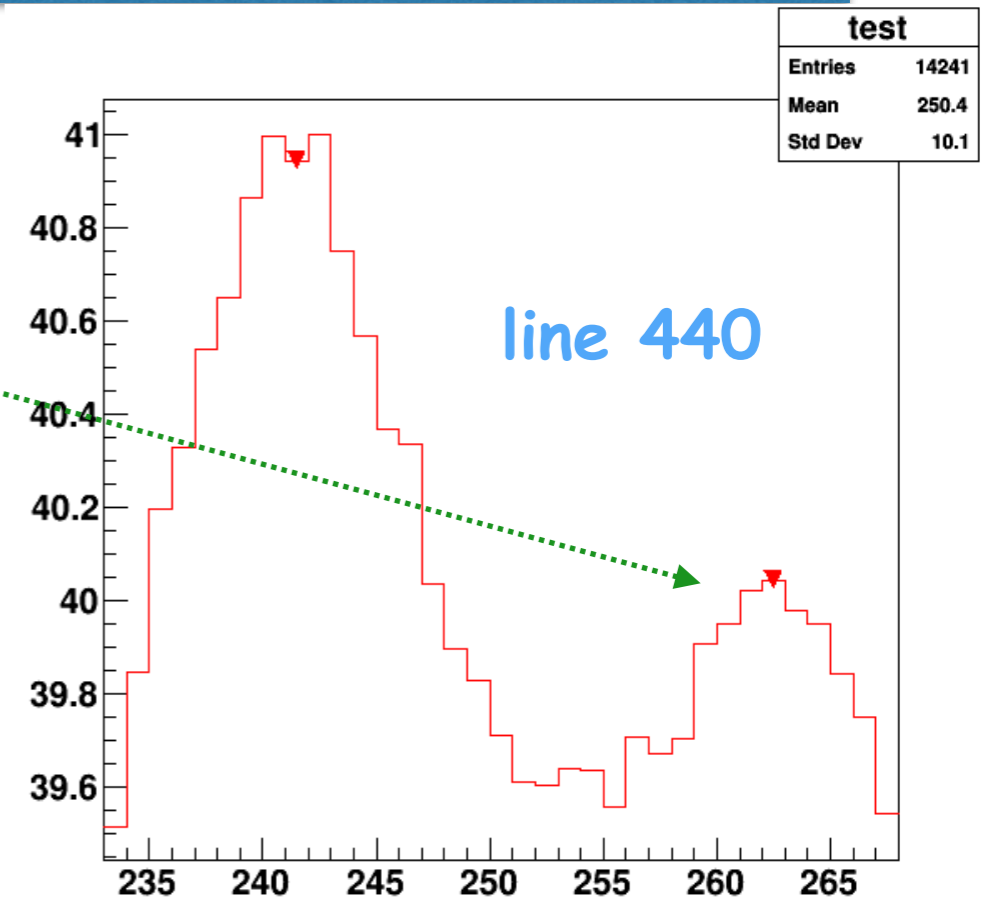
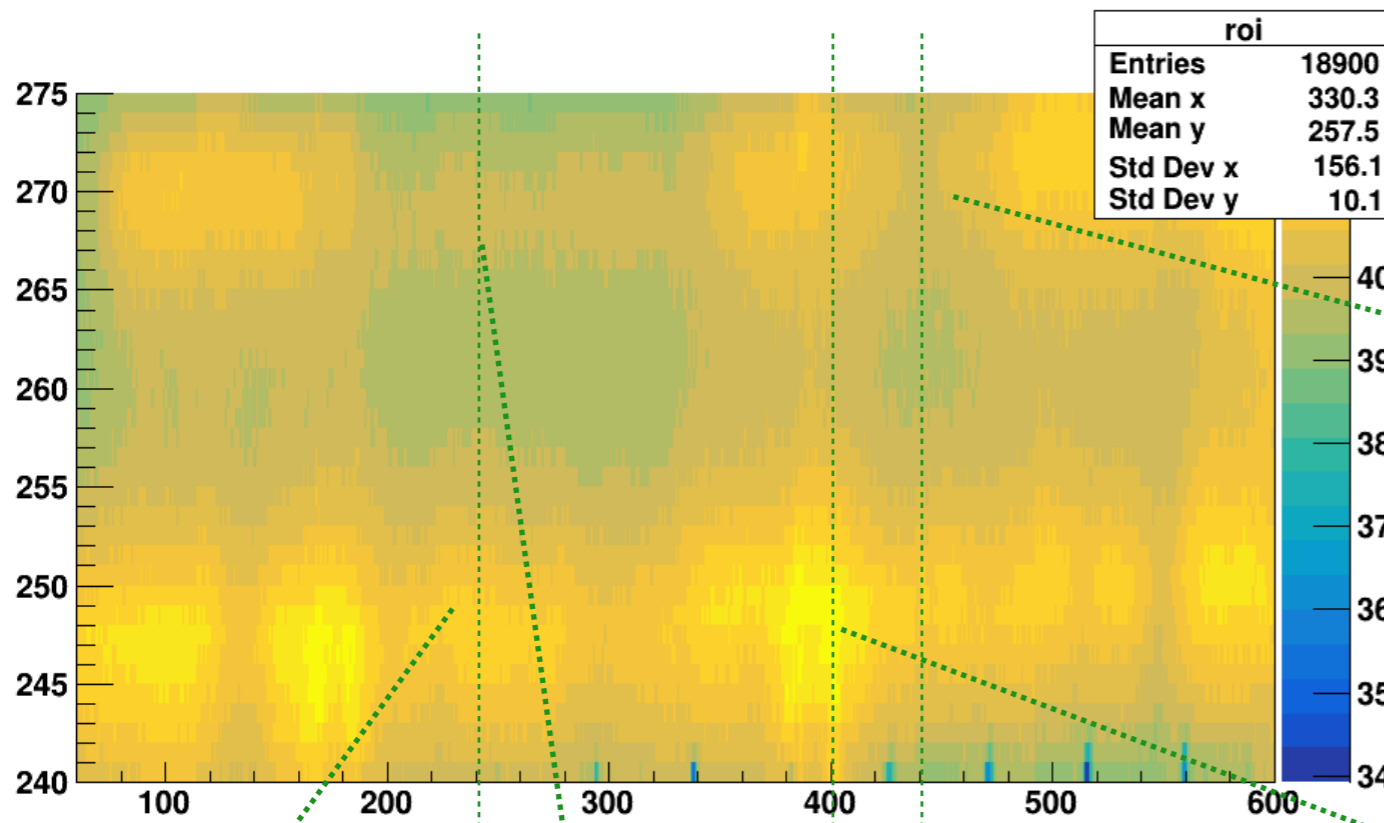
Jie Yu

Iowa State University

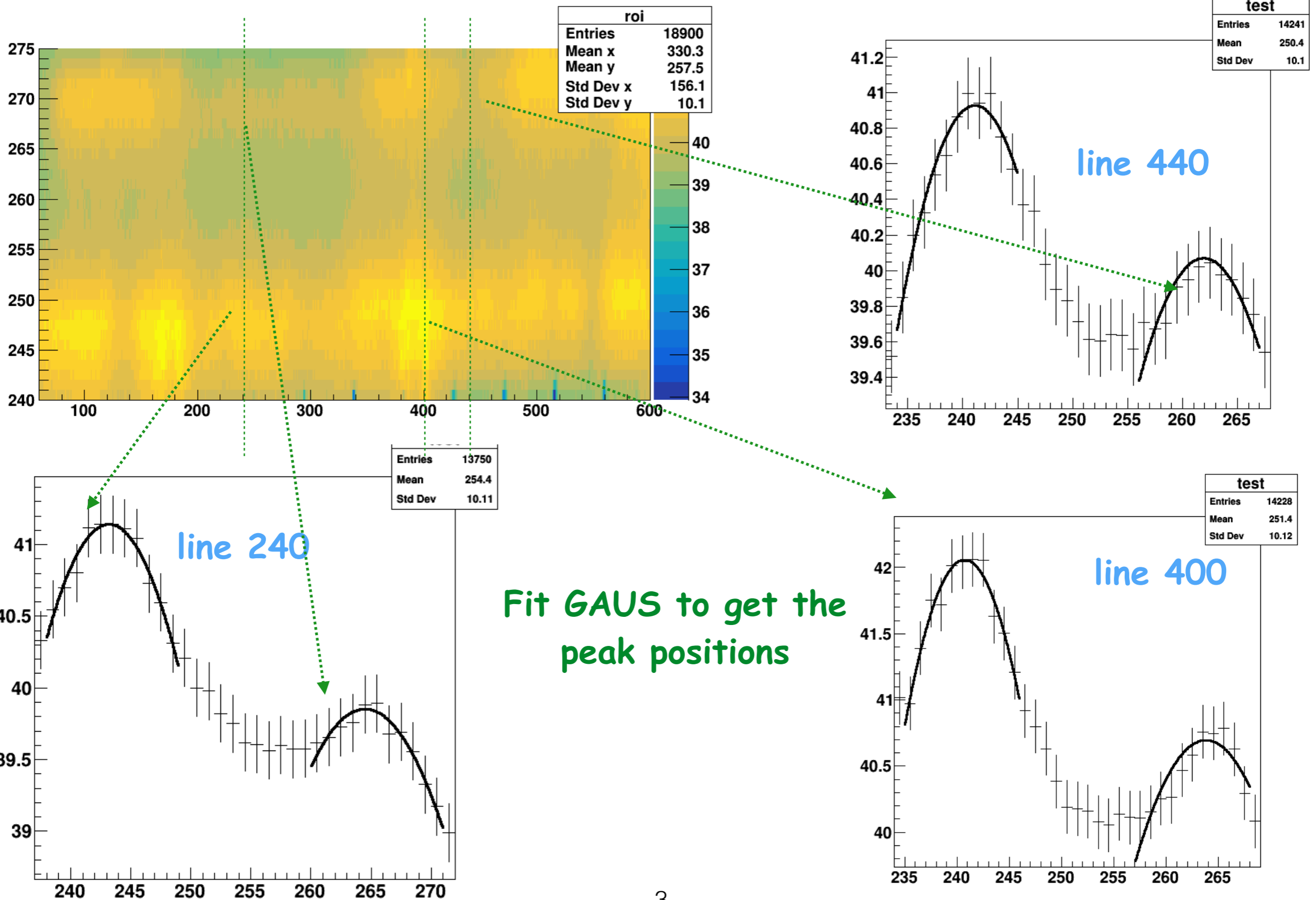
Stave QC discussion, Nov.14.2016



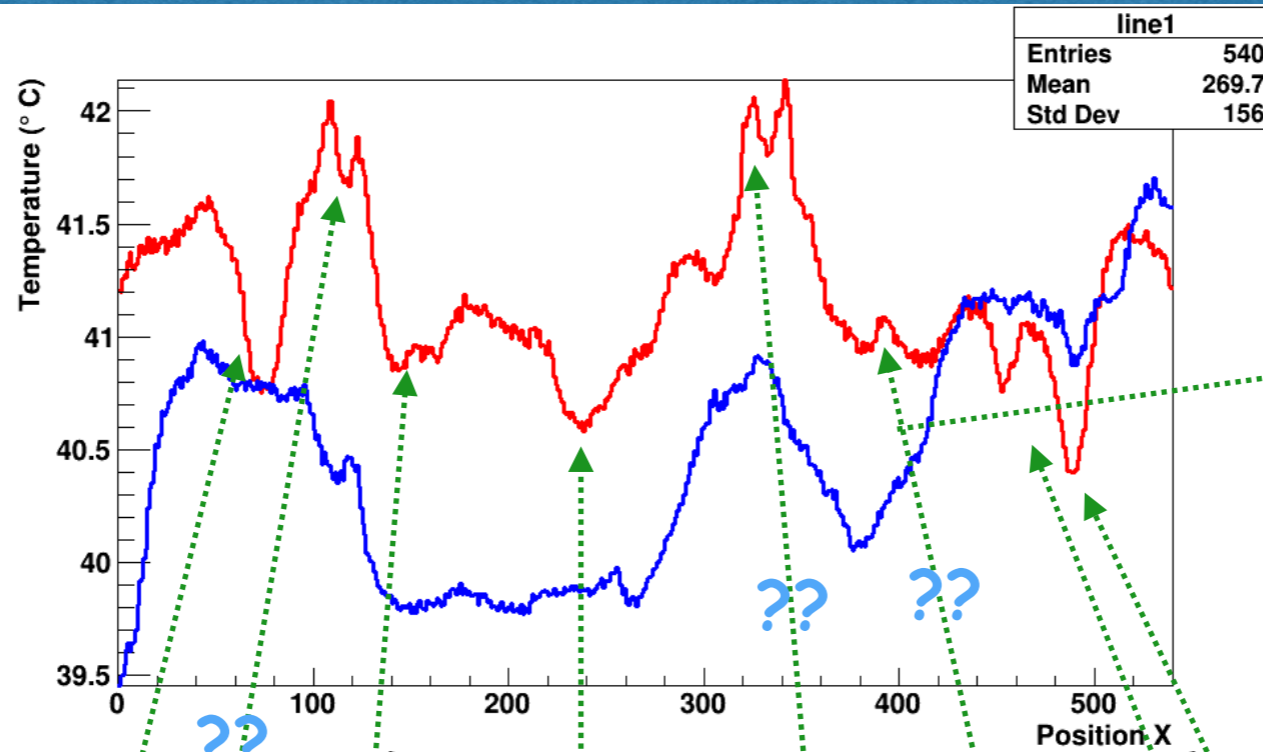
Long Stave data taken on August 17th, 2016



Long Stave data taken on August 17th, 2016

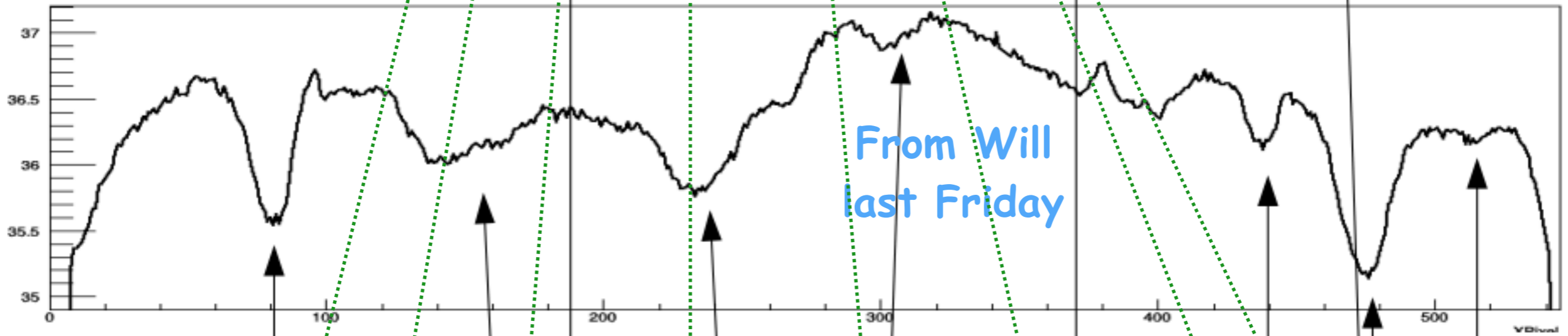


Long Stave data taken on August 17th, 2016

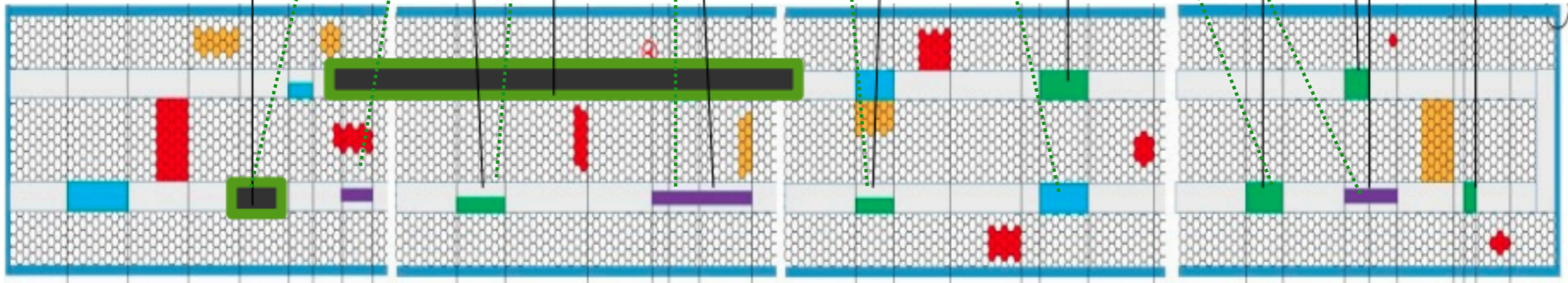


on the other side

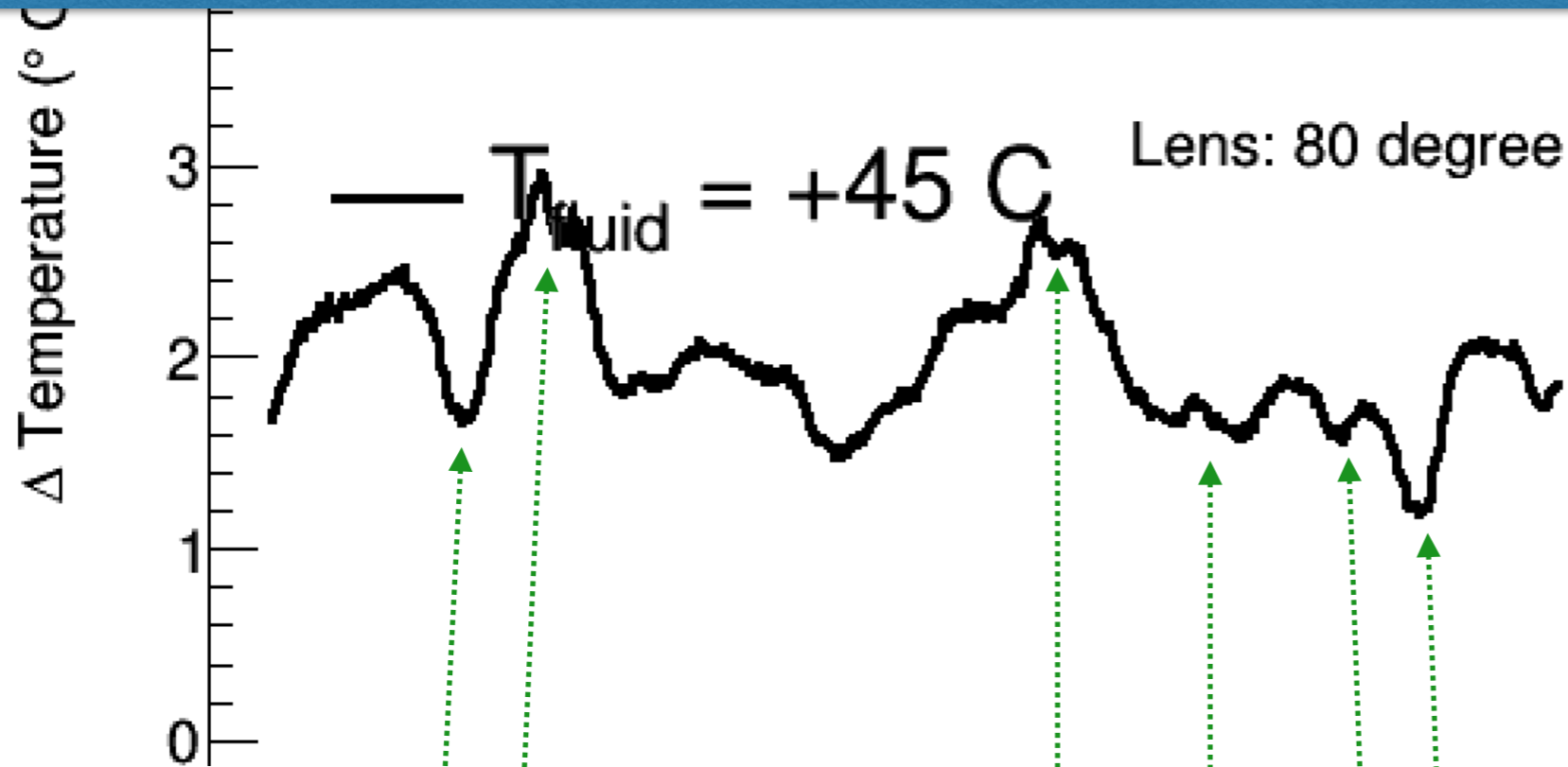
Bottom Line



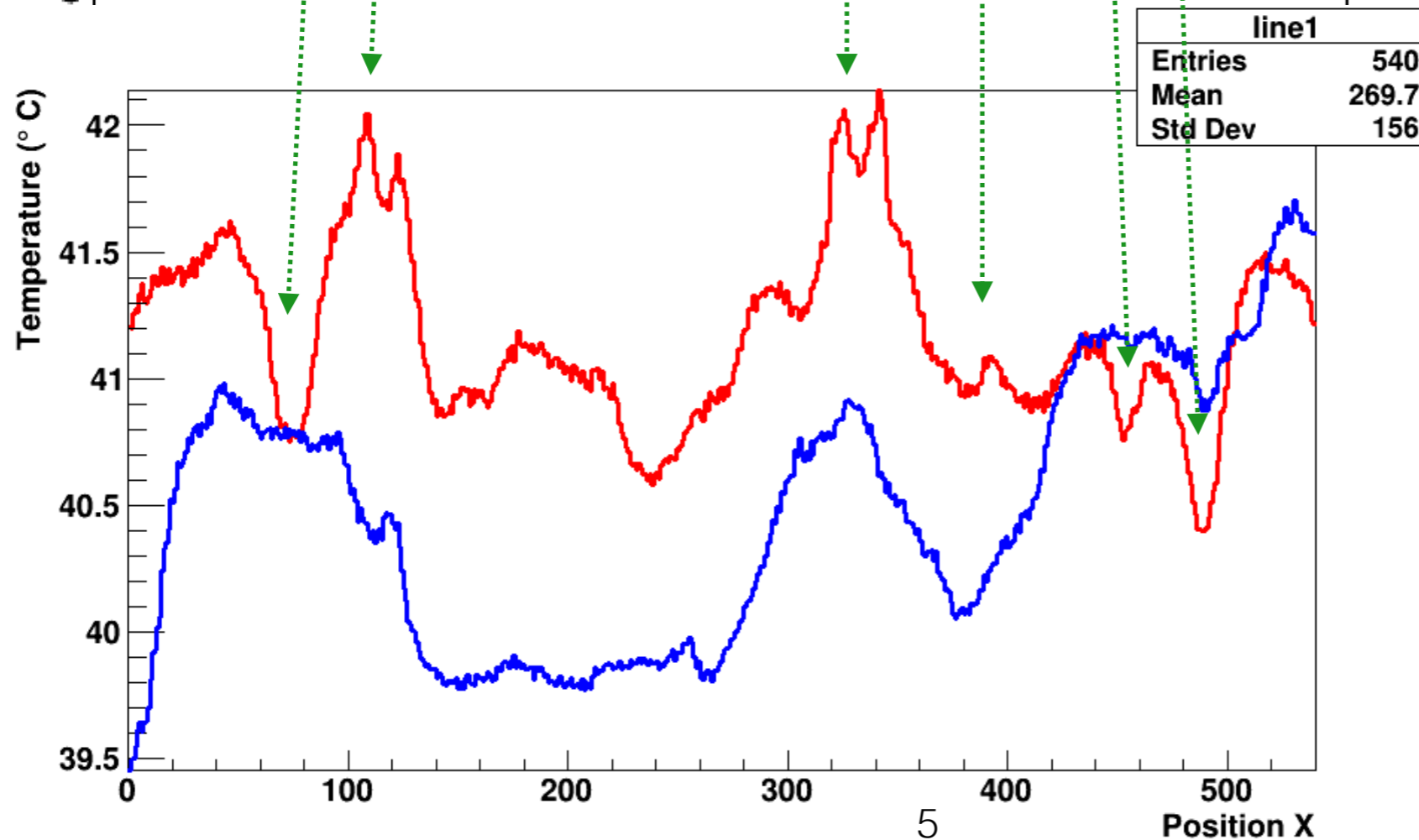
From Will last Friday



Long Stave data taken on August 17th, 2016



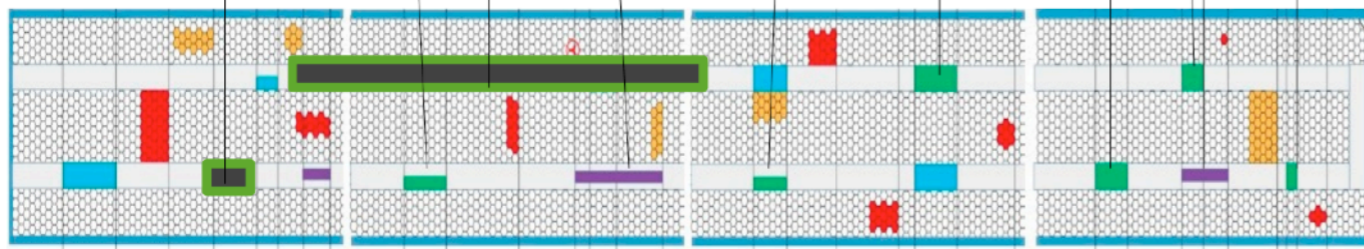
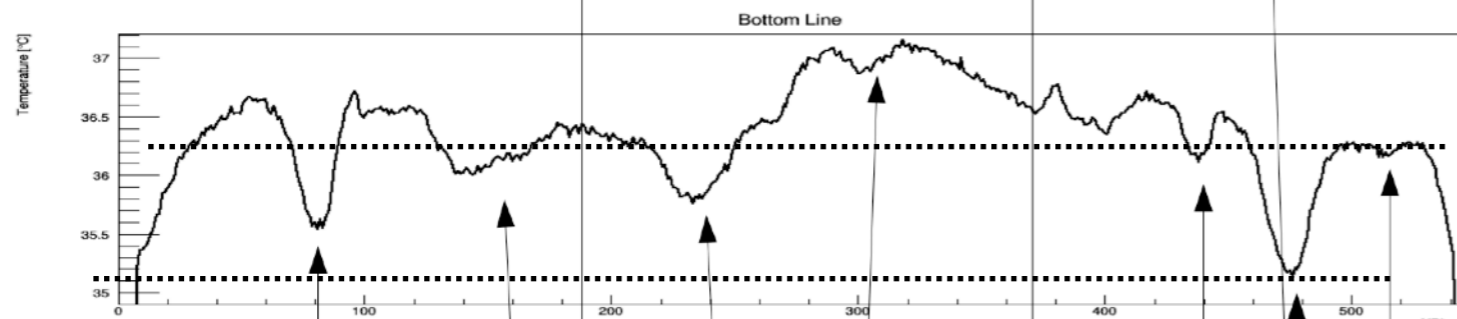
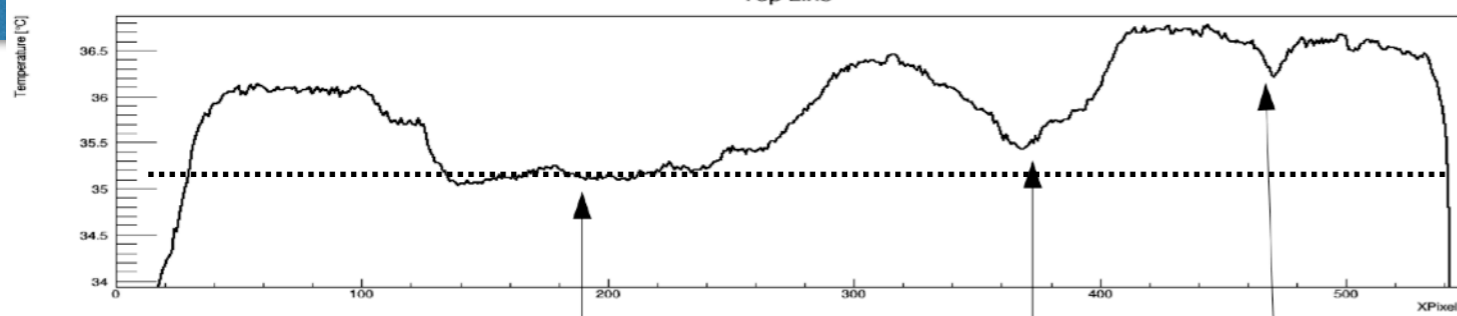
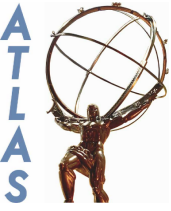
OLD method



NEW method

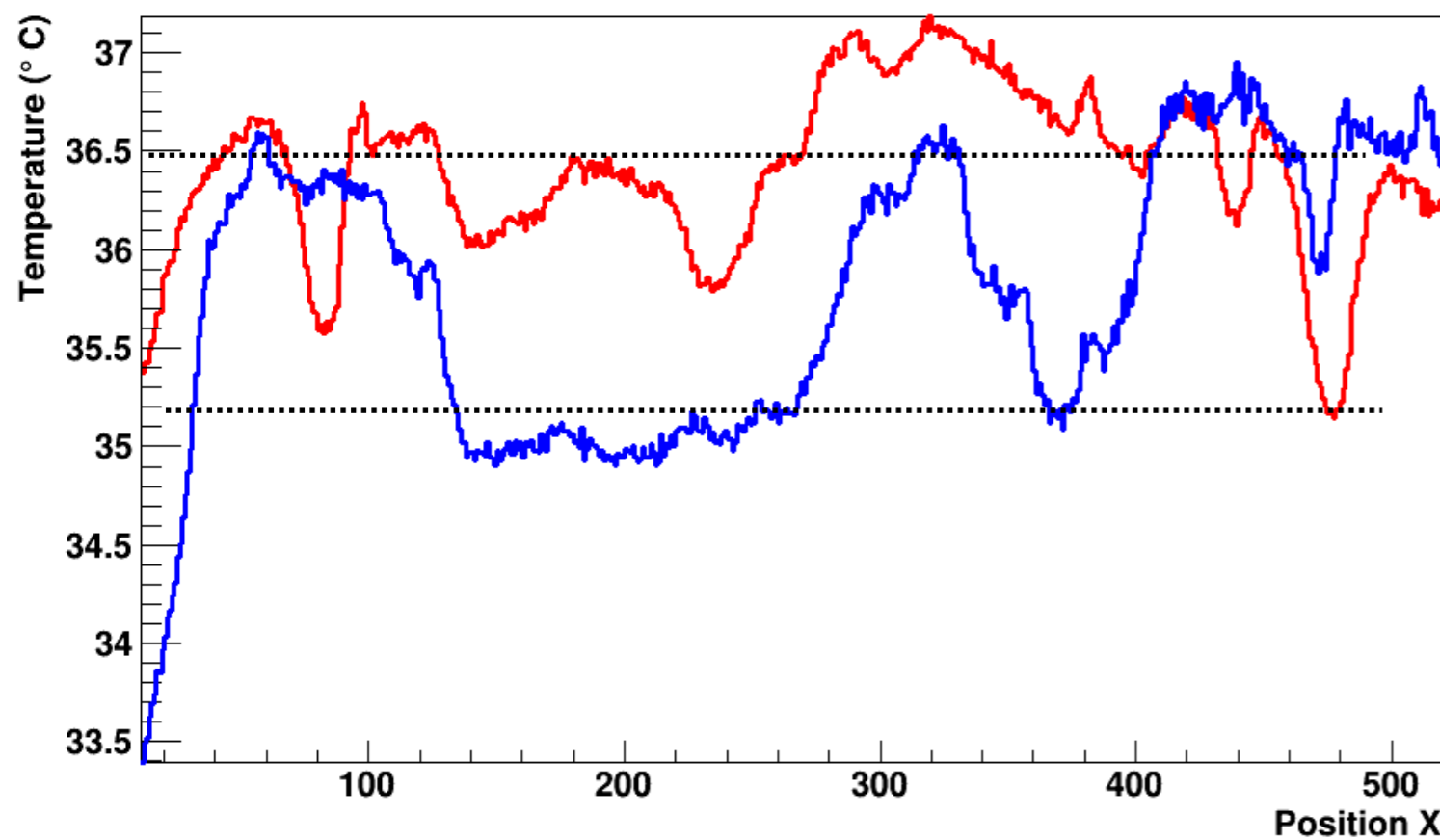
New Method with
Will's data

Will's long stave data



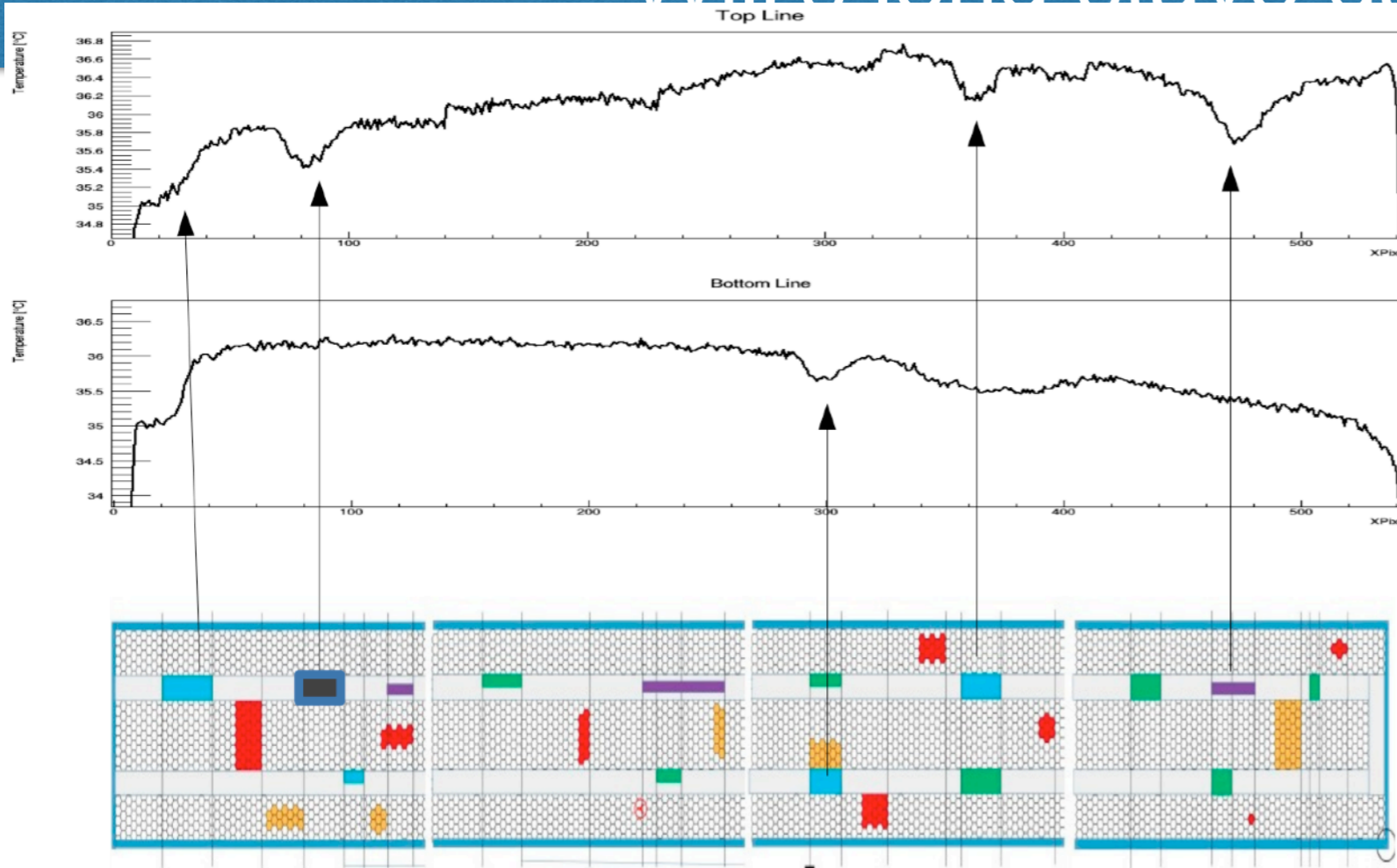
Will's plots presented on Nov 11, ISU meeting: [link here](#).

High T = 40 C

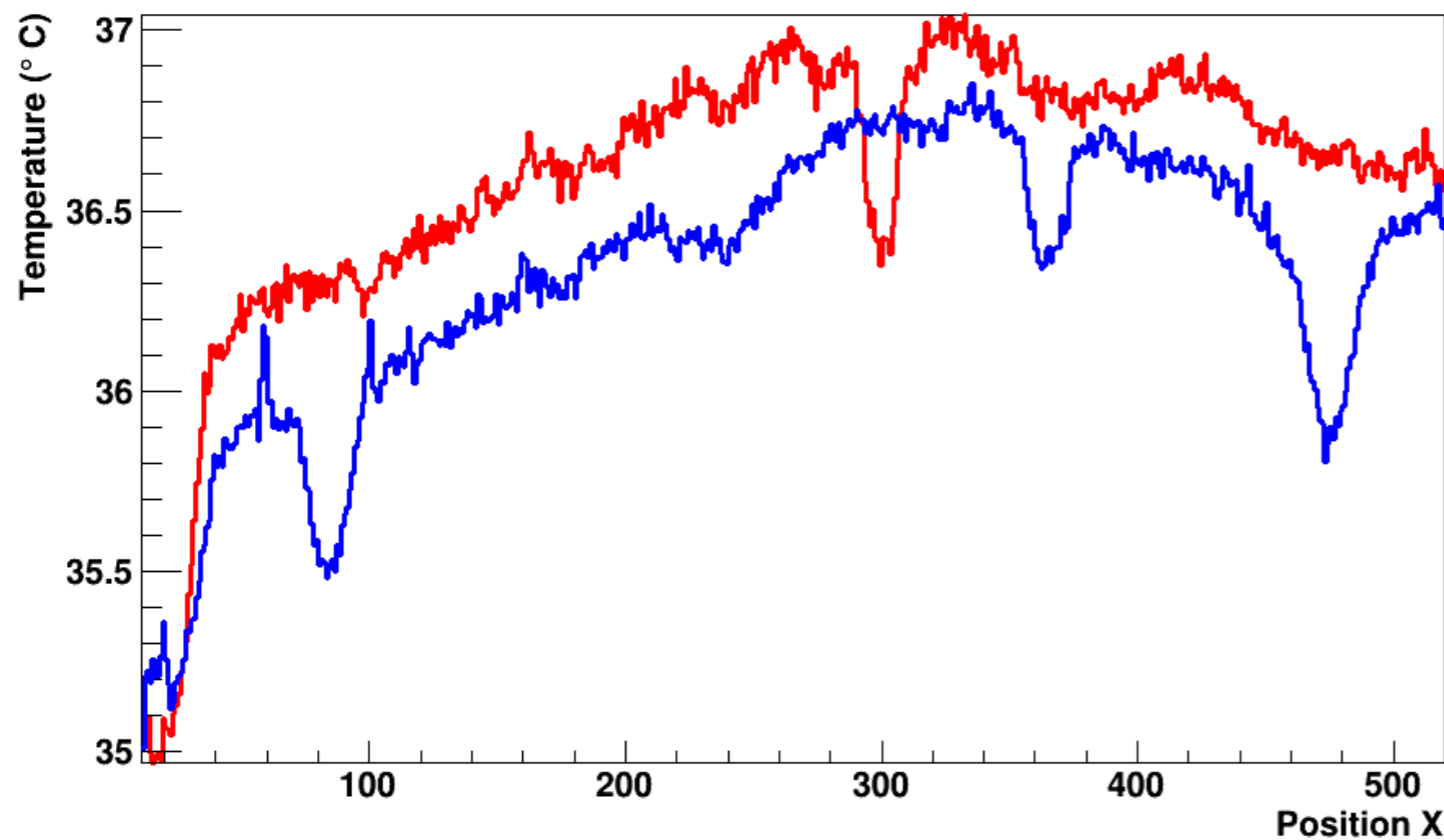


NEW method

Will's long stave data



Will's plots presented on Nov 11, ISU meeting: [link here](#).



NEW method