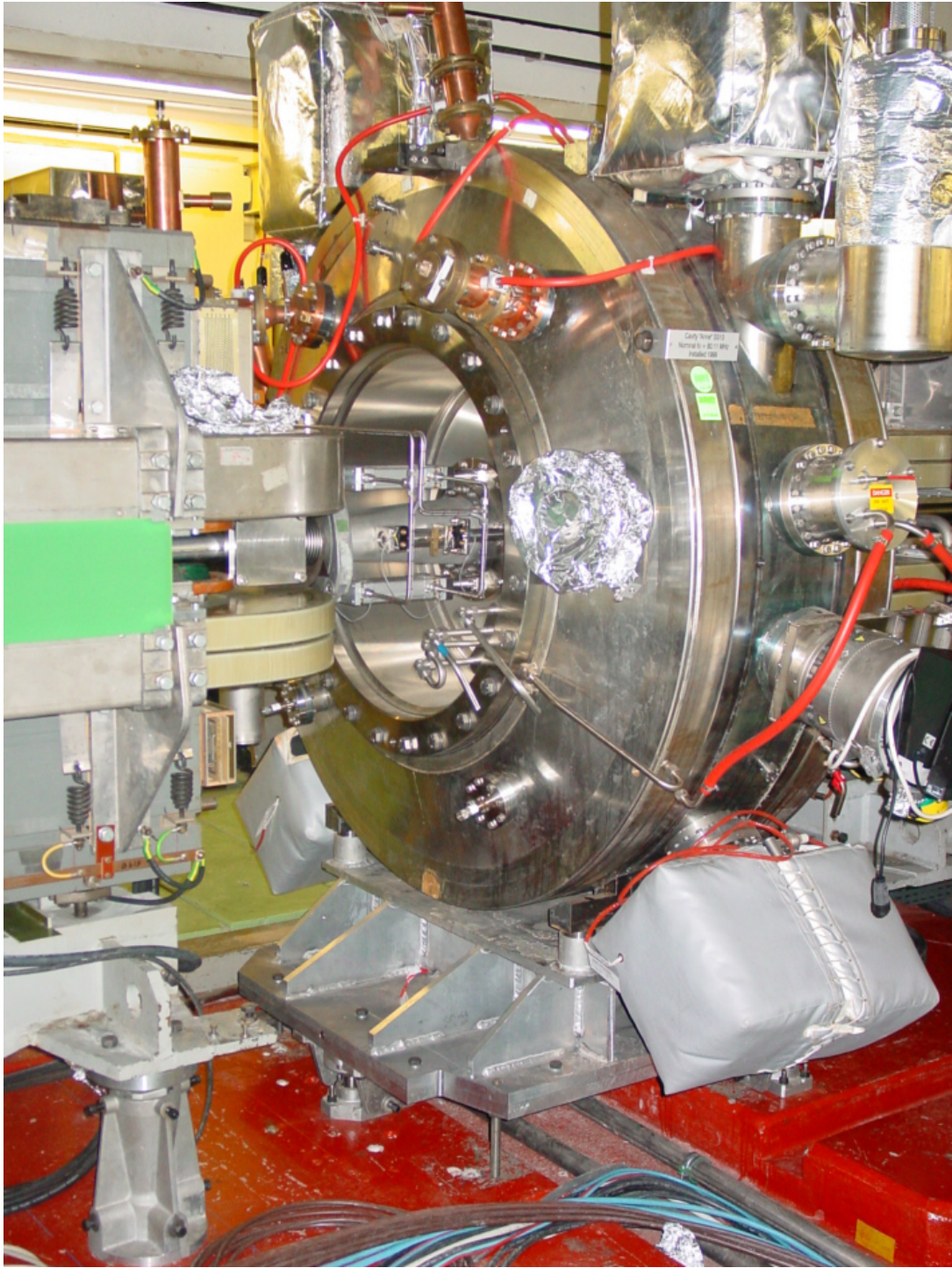
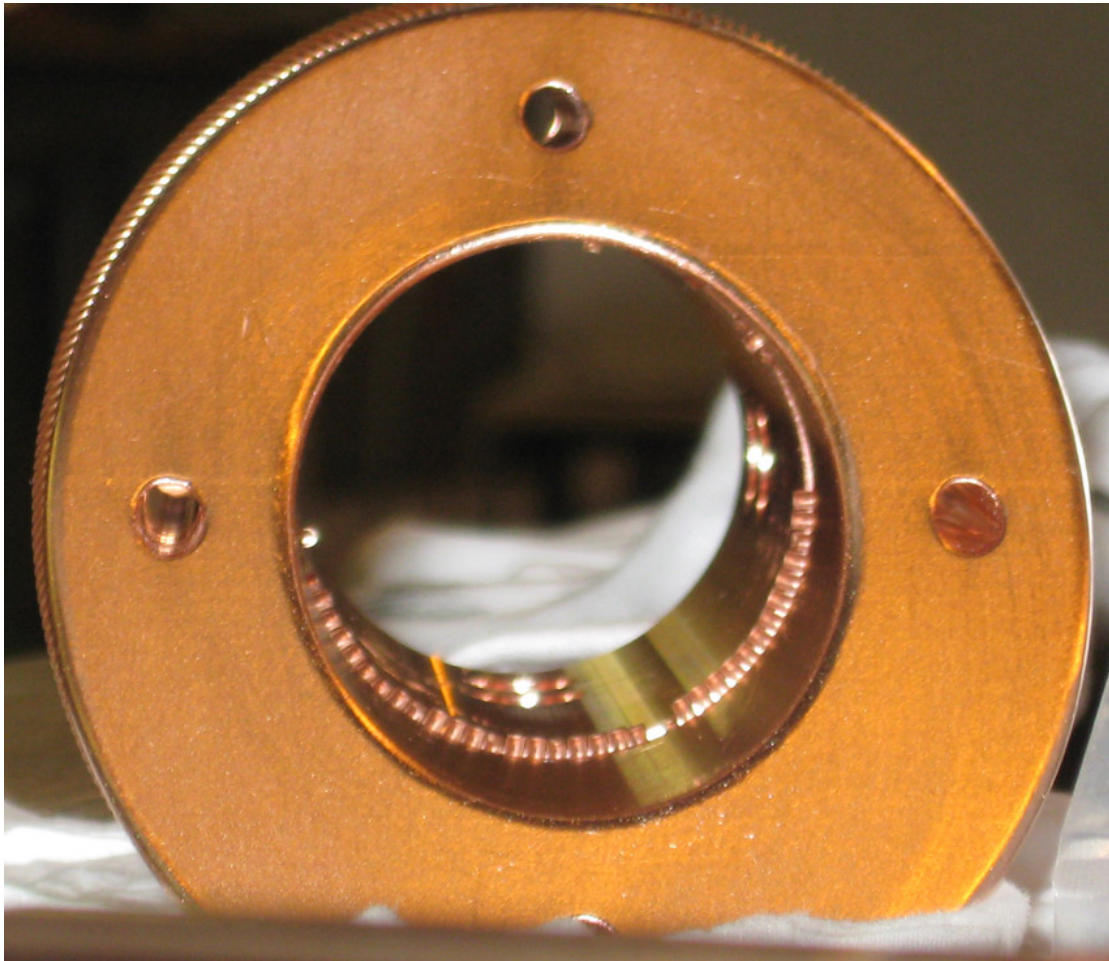


Problem(s) with the 80 MHz cavity in SS08



Problem(s) with the 80 MHz cavity in SS08

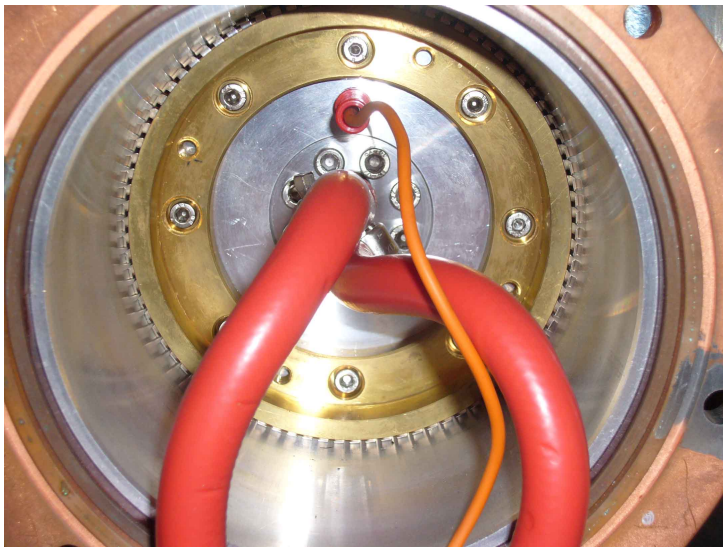
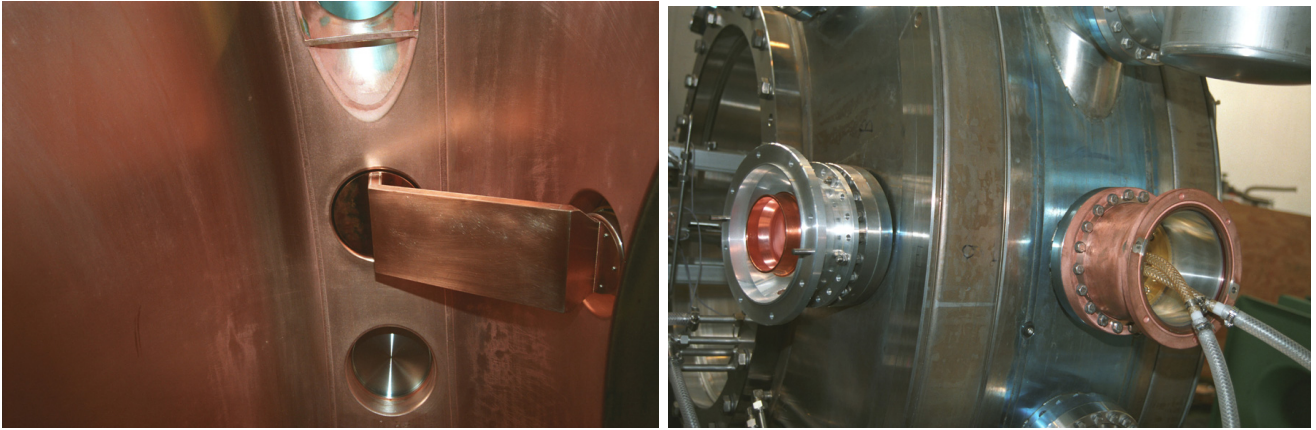
Tuner piston



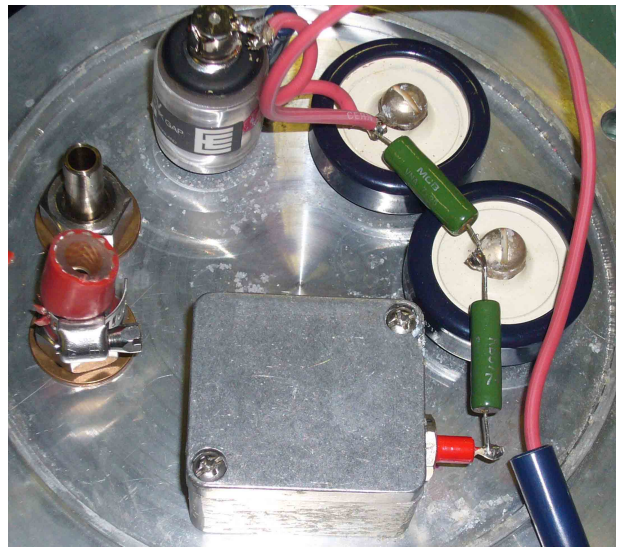
3 tuners modified and installed on cavities 08, 88 and 89.

Problem(s) with the 80 MHz cavity in SS08

RF Power Loop -



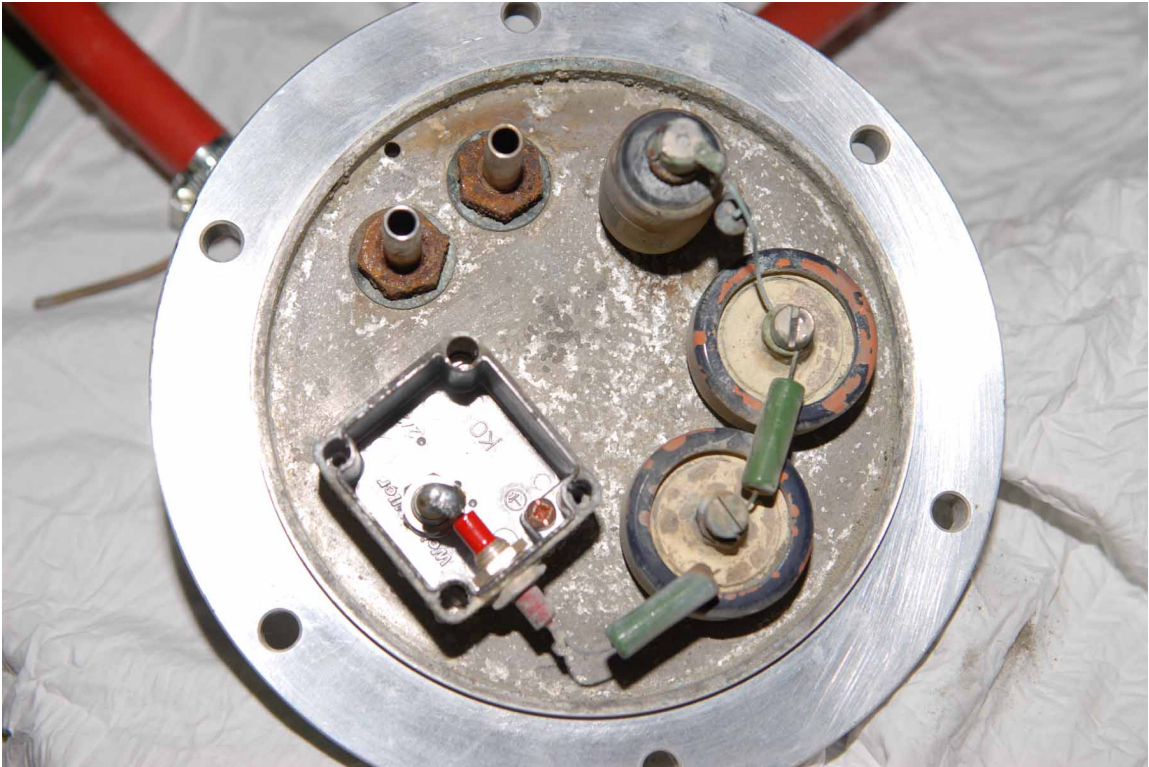
Cavity 89

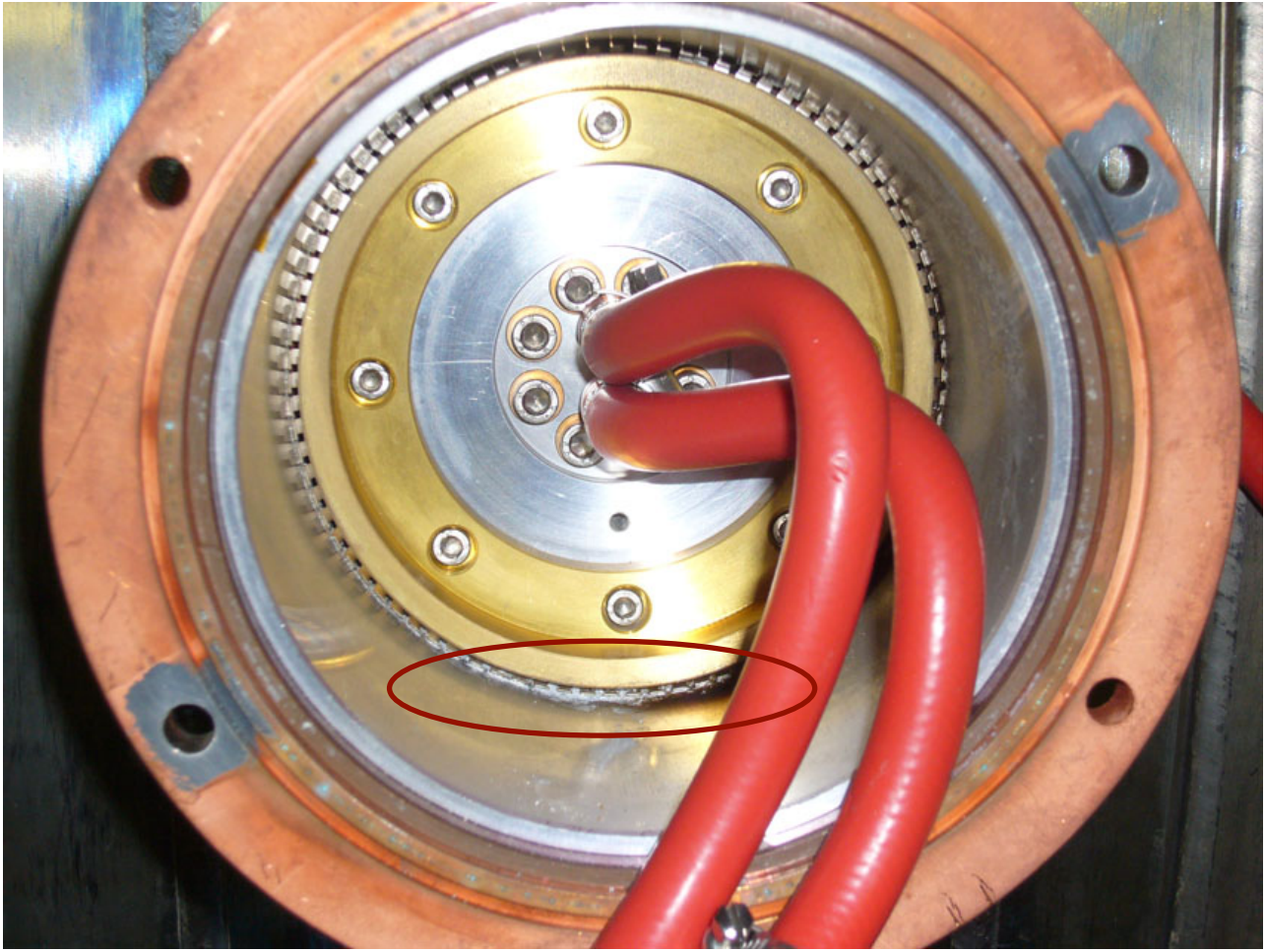


Polarization Circuit



Cavity 08





Cavity 88 ... something is starting ...