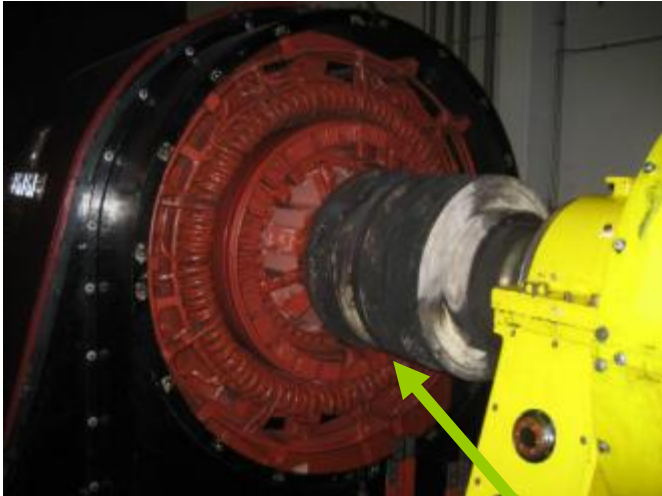


Status of powering issues 9 February 2010

Jean-Paul Burnet
TE/EPC

21 January 2010

Start of the motor without the brushes in place



Slip rings
Need to be replaced

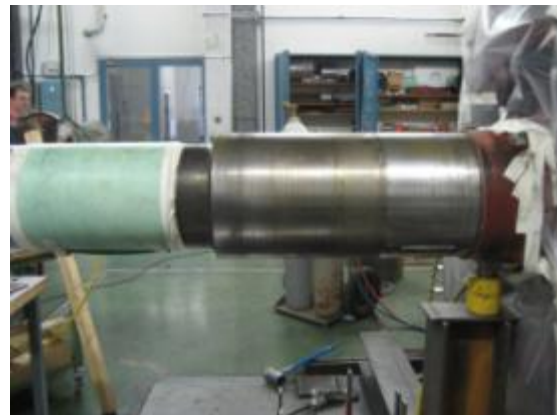


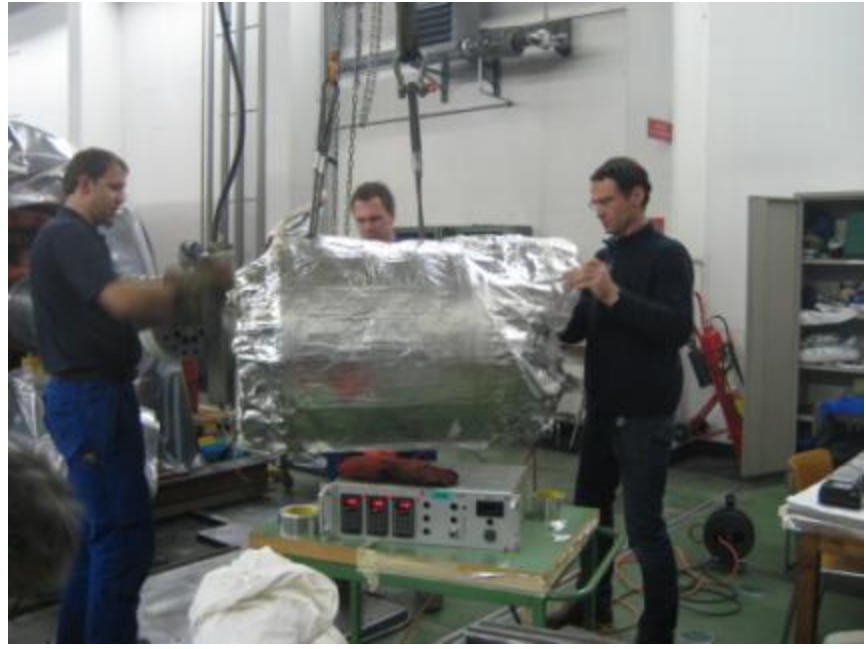
Motor and motor windings
have no visible damage





Siemens & EPC & MME







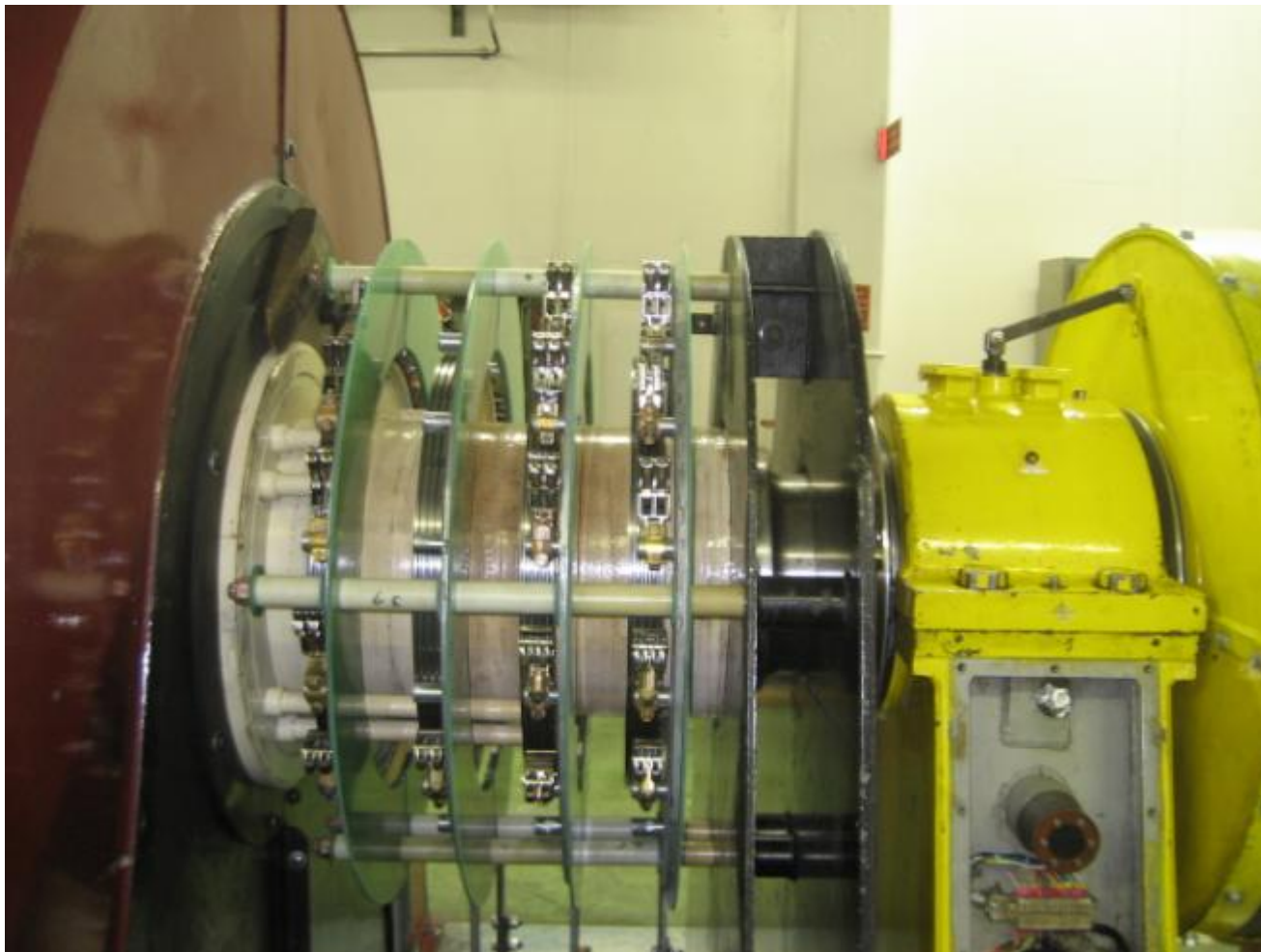
Siemens & EPC & MME

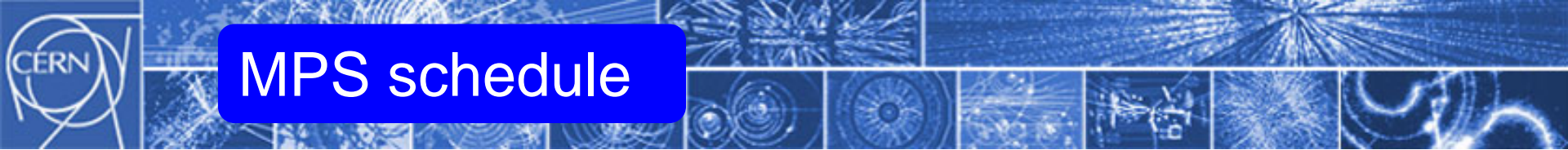




Siemens & EPC & MME

Present situation (this morning)





MPS schedule

All the mechanical works will be finished today

If we can stop the PS before 16h, EPC will switch from 13MVA -> generator

Then we need a whole day to control the motor, heat run, vibration measurement, alignment...on Wednesday.

Last check and possible correction on Thursday morning.

We can start to pulse with the magnets on Thursday afternoon.