



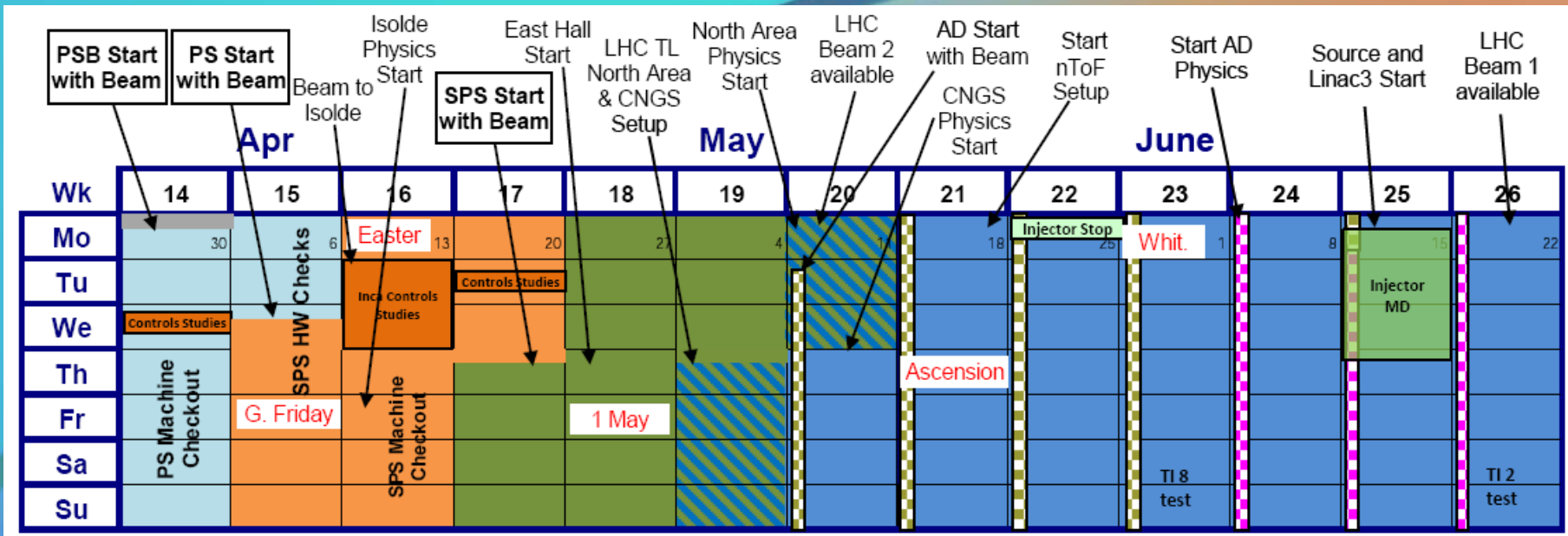
# PS Start-up Planning

(DRAFT)

R. Steerenberg BE/OP

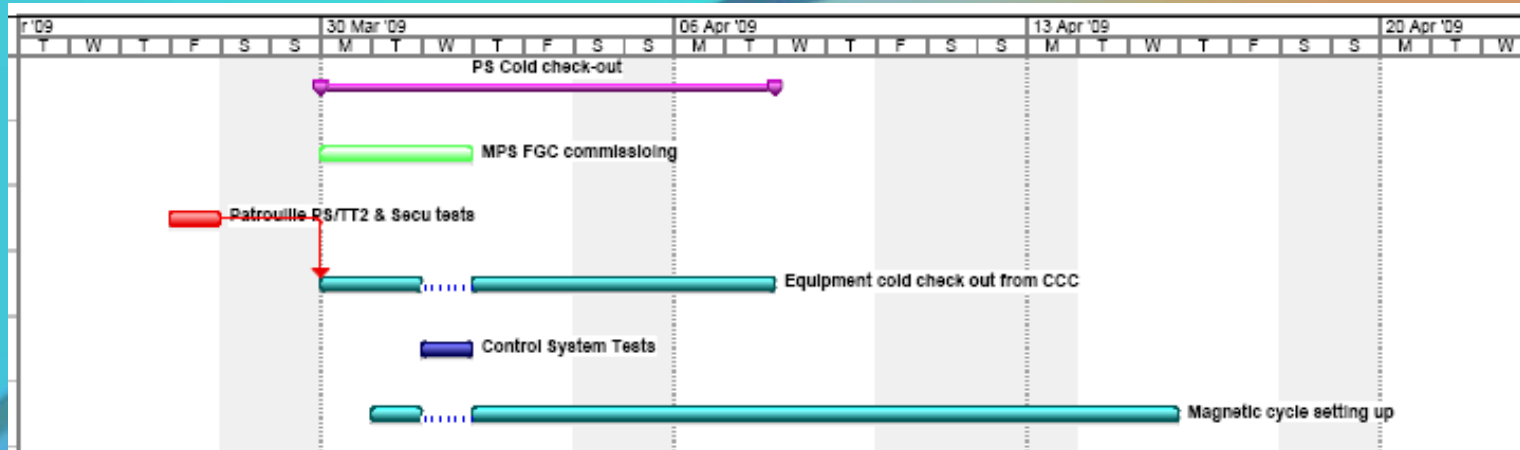
- **F**acilities **O**perations **M**eeting -  
- 17 March 2009 -

# Planning & Key Dates



- 🕒 Cold check out starts on **30 March**
- 🕒 Controls test Wednesday April 1<sup>st</sup>
- 🕒 1<sup>st</sup> beam in the PS on 8 April, but everything should be ready for beam on **April 3<sup>rd</sup>** (radiation signs etc.)
- 🕒 1<sup>st</sup> low intensity beam to SPS planned for **23 April**

# Cold Check out



- ⌚ Commissioning and fine adjustment of the MPS FGC regulation will most probably continue
- ⌚ Patrols (PS & TT2), security chain tests and check list (signatures) to be completed on Monday April 30<sup>th</sup>.
- ⌚ Usual cold check out activities
- ⌚ Lots of work on generation of all the magnetic cycles following the new regulation and application
- ⌚ Controls test to validate shut down work

# Setting up with beam

