

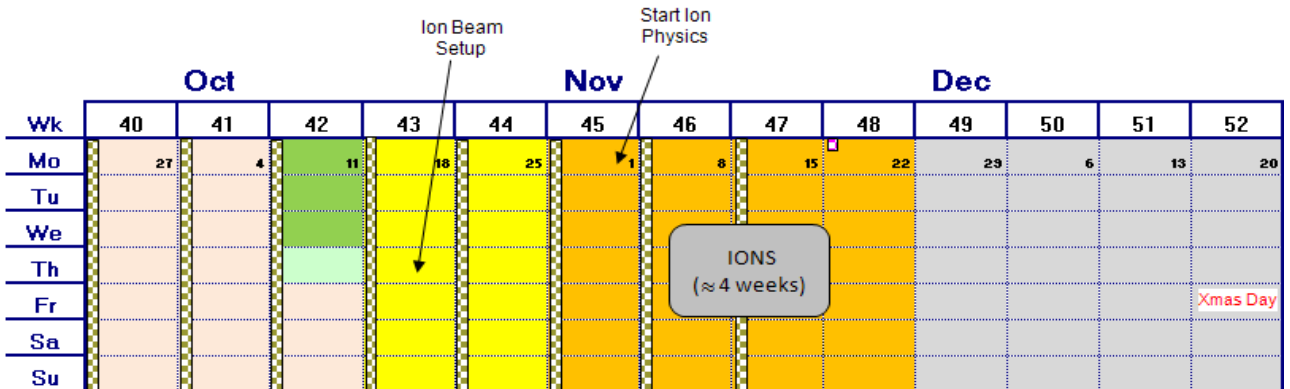
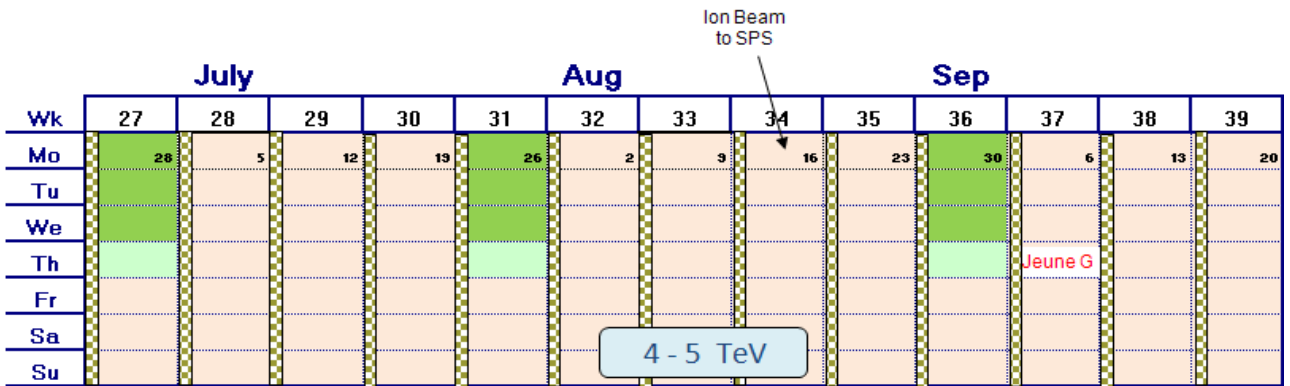
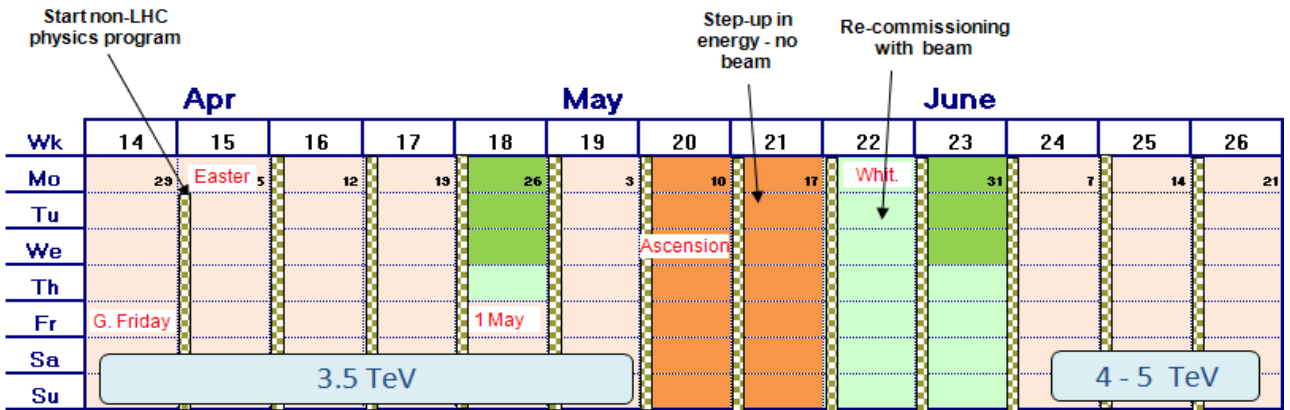
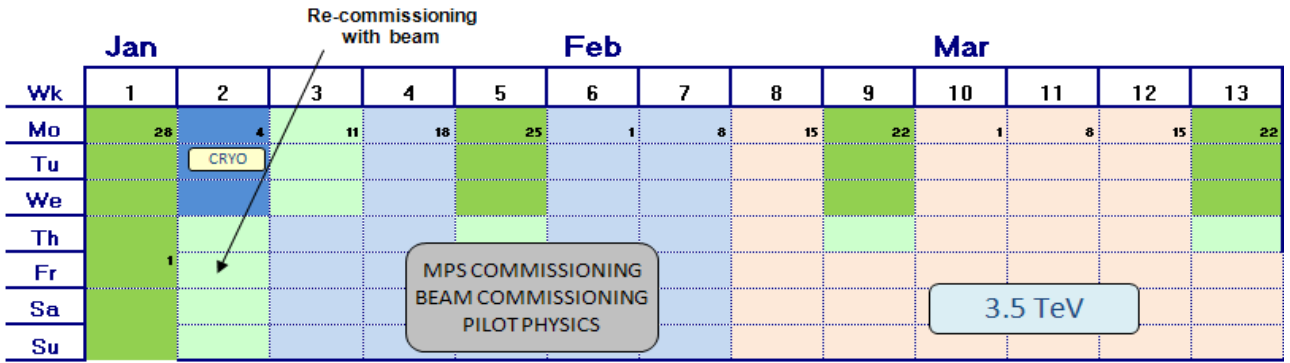
2010

- LHC running through-out the year
 - no shutdown 2009 – 2010
 - standby over Christmas
 - 3 days in the New Year to reestablish cryogenics
 - straight back into beam commissioning (low intensity)
 - possible step-up in energy mid-year
 - overall strategy still fluid
 - one month's ion running at end of year

LHC - impact

- During commissioning:
embedded cycle
 - single bunch/batch
- Production running:
 - ~ 1 hour dedicated filling a possibility
- 3 days technical stop per month
 - Injectors' MD period should be timed to coincide

2010 LHC Schedule Very draft



Technical Stop
 Re-commissioning with beam

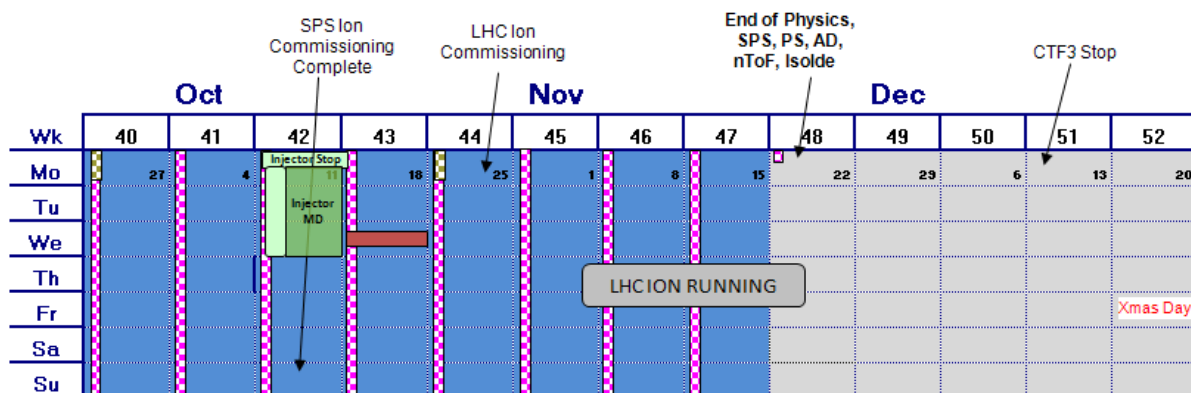
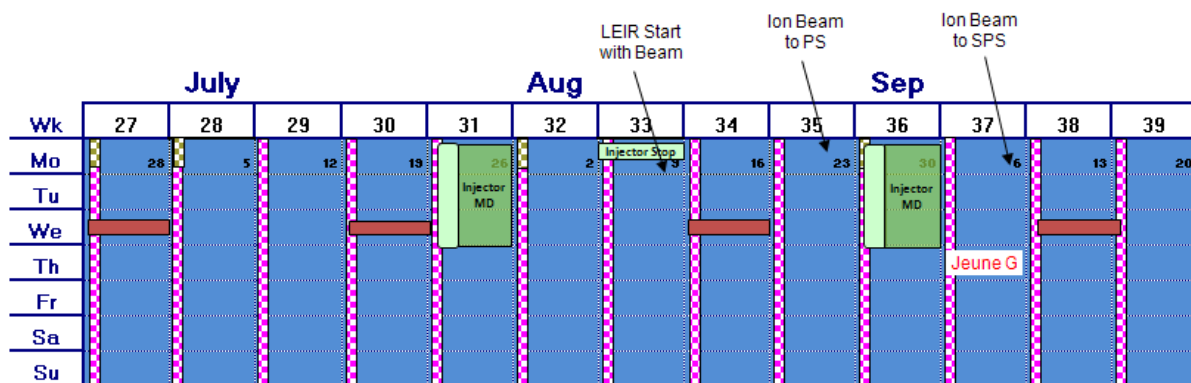
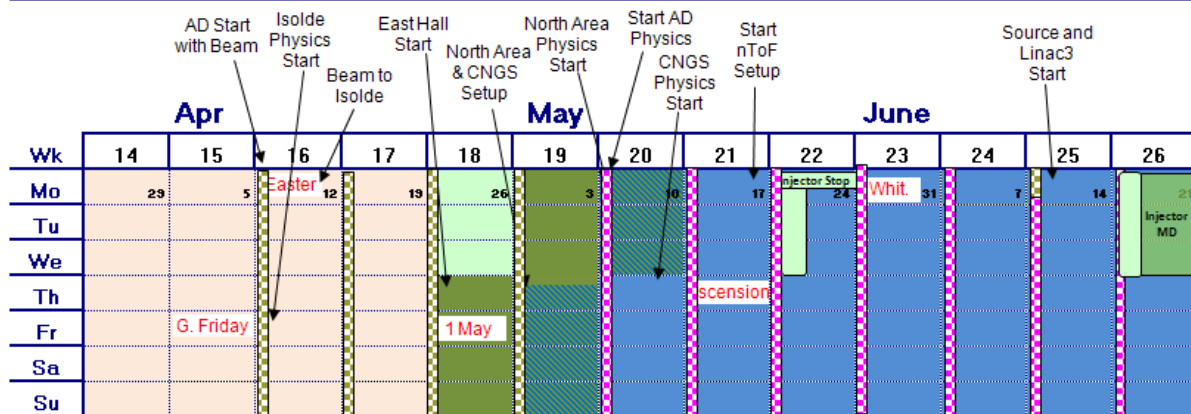
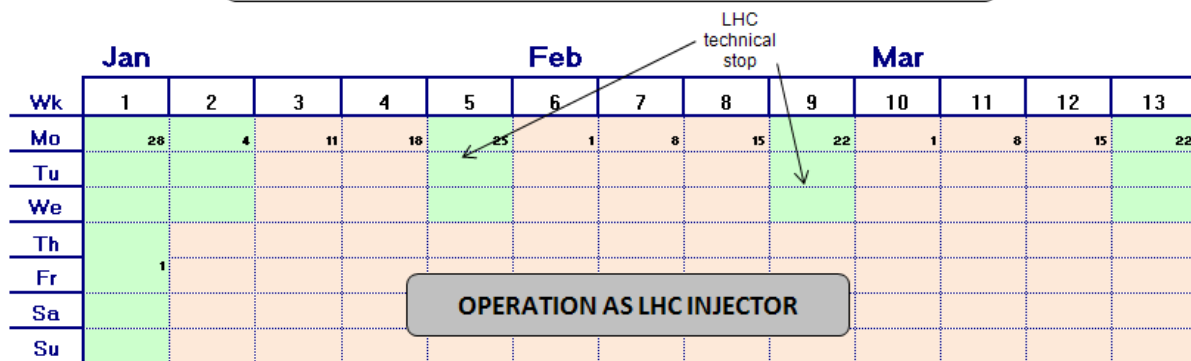
SPS et al Physics Program

Injectors 2010

- Essentially a facsimile of 2009
- Without a shutdown
- Lead straight into set-up for ISOLDE and AD after Easter
 - plus 4 weeks for AD
- Hold other users at 2009 levels
 - open to debate & approval
- MD program as for 2009

North Area	28
AD	24
CNGS	27.5
Isolde	31.3
East area	29.5
nTOF	26

2010 Injector Accelerator Schedule Draft



- Injector Complex MD Block
- 8-hour Wednesday MD
- Injector Stop Technical Stop for the Injector Chain
- LHC technical stop
- AD Physics
- AD Setting-up & Studies