



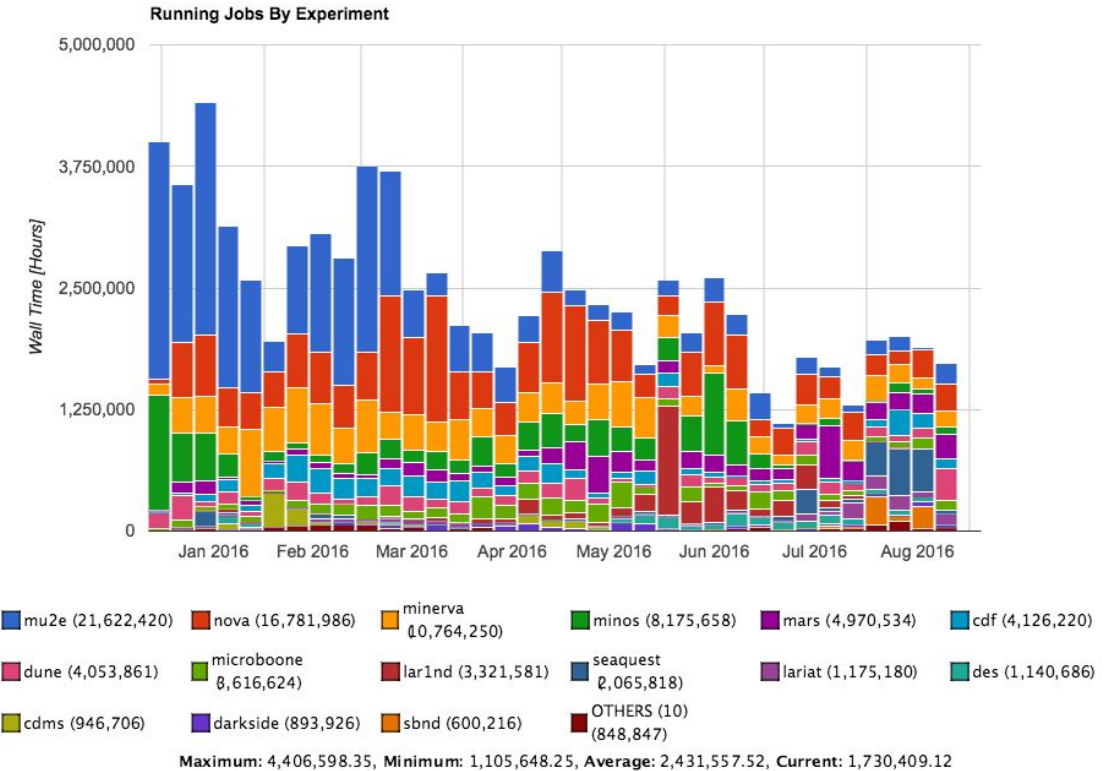
Highlights of The FIFE Project: Computing for Experiments

Ken Herner for the FIFE Project
CHEP
11 October 2016



Recent Advances FIFE

- FIFE: Fabric for Frontier Experiments
 - Aims to provide common tools and infrastructure for non-LHC HEP experiments
 - Experiments in all HEP areas
 - Overall scale of computing beginning to approach a single LHC experiment
- Recent Advances:
 - Major increase in use of the Open Science Grid
 - Testing new technologies for auxiliary files
 - Adding international sites for job submission
 - Expanding use of HPC resources and commercial clouds



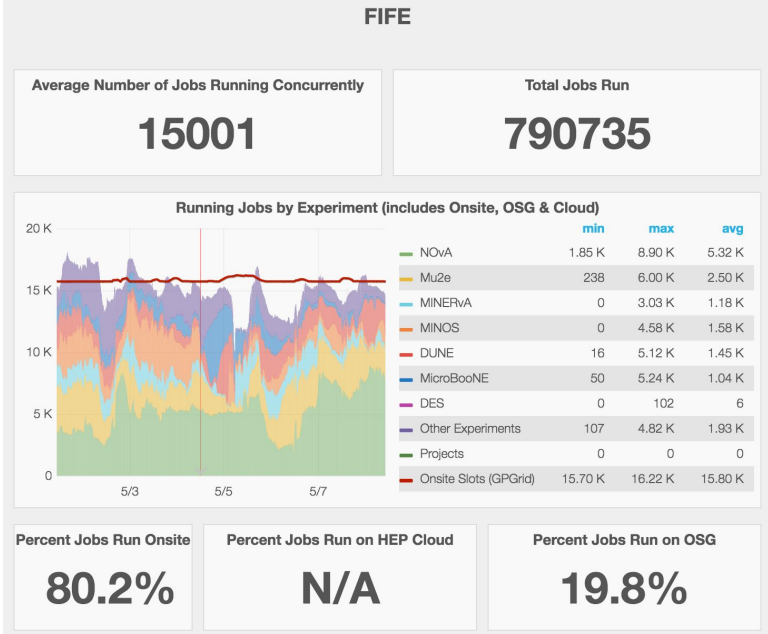
Infrastructure Advances

Several new pieces of the FIFE architecture, including:

New job monitoring tools, also being used for OSG monitoring

New CI system (Jenkins-based) that also does physics validation

Full workflow management system called POMS: job dependencies, automatic submission/resubmission, integrated monitoring



POMS

Dashboard

Calendar

Requests

DB Admin

Experiments

Users

Raw Tables

Campaigns

Active

InActive

Compose Campaign

Compose Definition

Compose Launch Template

Jobs

All (Last Day)

Failed_By Exit Code and Campaign Name (Last Day)

Failed_By Exit Code and Campaign Name (Last Week)

Failed_By Exit Code and Node Name (Last Day)

Failed_By Exit Code and CPU Type (Last Day)

Home / Jobs by exit code

Jobs by user_exe_exit_code,name,experiment ?

2016-09-27 17:53 to 2016-09-28 17:53

<previous 1 days | next 1 days >

user_exe_exit_code x name x experiment x

Submit Query

user_exe_exit_code	name	experiment	count
1	cry_generation	nova	4
134	cry_generation	nova	2