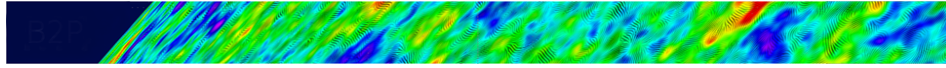


Towards a next space probe for CMB observations and cosmic origins exploration



Contribution ID: 11

Type: **not specified**

Galaxy clusters + synergy with eRosita (20'+10)

Tuesday, May 17, 2016 11:50 AM (30 minutes)

Primary author: SUNYAEV, Rashid

Presenter: SUNYAEV, Rashid

Session Classification: CMB science case