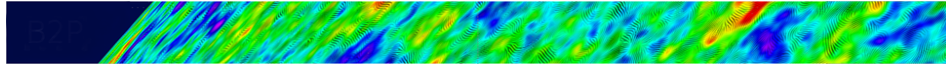


Towards a next space probe for CMB observations and cosmic origins exploration



Contribution ID: 19

Type: **not specified**

The CMB-S3 landscape (15'+5)

Tuesday, May 17, 2016 4:00 PM (20 minutes)

Primary author: PRYKE , Clem (Dept. of Physics. The University of Minnesota, Minneapolis)

Presenter: PRYKE , Clem (Dept. of Physics. The University of Minnesota, Minneapolis)

Session Classification: The suborbital roadmap