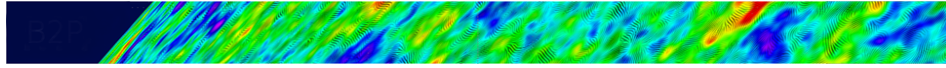


Towards a next space probe for CMB observations and cosmic origins exploration



Contribution ID: 35

Type: **not specified**

The data analysis challenge (15'+5)

Wednesday 18 May 2016 15:00 (20 minutes)

Primary author: BORRILL, Julian (Lawrence Berkeley National Laboratory)

Presenter: BORRILL, Julian (Lawrence Berkeley National Laboratory)

Session Classification: Data analysis, simulations, systematics and calibration