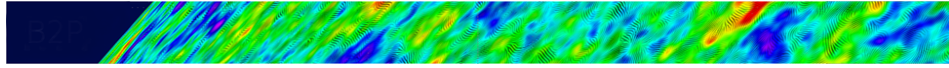


Towards a next space probe for CMB observations and cosmic origins exploration



Contribution ID: 36

Type: **not specified**

Simulation plans (15'+5')

Wednesday 18 May 2016 15:20 (20 minutes)

Presenter: NATOLI, Paolo (University of Ferrara)

Session Classification: Data analysis, simulations, systematics and calibration