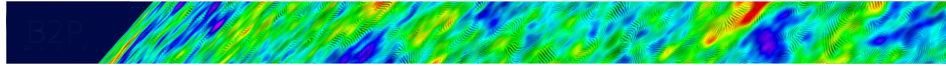


Towards a next space probe for CMB observations and cosmic origins exploration



Contribution ID: 42

Type: **not specified**

Science report

Friday, May 20, 2016 9:00 AM (30 minutes)

Primary author: KOMATSU, Eiichiro (Max-Planck-Institute for Astrophysics, Garching)

Presenter: KOMATSU, Eiichiro (Max-Planck-Institute for Astrophysics, Garching)

Session Classification: Reports from splinter sessions and discussion