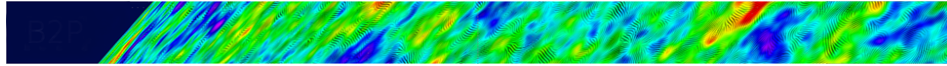


Towards a next space probe for CMB observations and cosmic origins exploration



Contribution ID: 46

Type: **not specified**

Payload report

Friday 20 May 2016 11:30 (30 minutes)

Primary authors: MAFFEI, Bruno (Institut d'Astrophysique Spatiale); BERSANELLI, Marco (Professor of Astronomy and Astrophysics)

Presenters: MAFFEI, Bruno (Institut d'Astrophysique Spatiale); BERSANELLI, Marco (Professor of Astronomy and Astrophysics)

Session Classification: Reports from splinter sessions and discussion