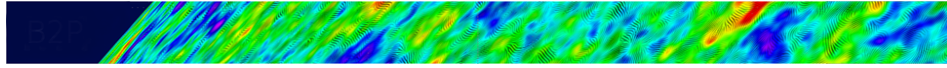


Towards a next space probe for CMB observations and cosmic origins exploration



Contribution ID: 56

Type: **not specified**

High Performance Computing Resources (10')

Wednesday, 18 May 2016 12:40 (10 minutes)

Presenter: BORRILL, Julian (Lawrence Berkeley National Laboratory)

Session Classification: US contribution