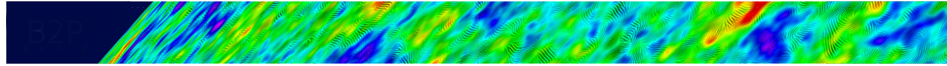


Towards a next space probe for CMB observations and cosmic origins  
exploration



Contribution ID: 57

Type: **not specified**

**Planck HFI Systematics and strategy for COrE  
(15'+5')**

*Wednesday, 18 May 2016 15:40 (20 minutes)*

**Presenter:** PATANCHON, Guillaume (Université Paris Diderot)

**Session Classification:** Data analysis, simulations, systematics and calibration