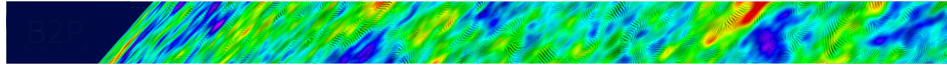


Towards a next space probe for CMB observations and cosmic origins  
exploration



Contribution ID: 72

Type: **not specified**

## Mapping polarization with COrE

*Thursday, May 19, 2016 3:10 PM (10 minutes)*

**Presenter:** POLASTRI, Linda (Università di Ferrara and INFN)

**Session Classification:** Parallel: Science and simulations