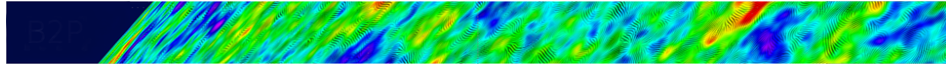


Towards a next space probe for CMB observations and cosmic origins exploration



Contribution ID: 82

Type: **not specified**

Large-area TES developments in Italy

Thursday, May 19, 2016 10:35 AM (10 minutes)

Presenter: GATTI, Flavio (University and INFN of Genova)

Session Classification: Parallel: Focal plane and Payload