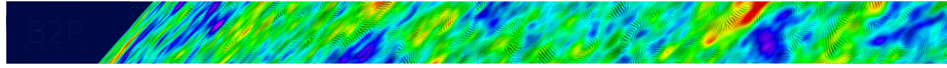


# Towards a next space probe for CMB observations and cosmic origins exploration



Contribution ID: 89

Type: **not specified**

## Outcome of CDF study

*Thursday 19 May 2016 13:40 (15 minutes)*

**Presenter:** DE BERNARDIS, Paolo (University of Rome La Sapienza)

**Session Classification:** Parallel: Focal plane and Payload