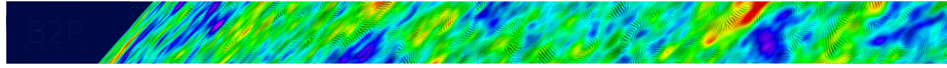


Towards a next space probe for CMB observations and cosmic origins exploration



Contribution ID: 90

Type: **not specified**

Scan strategy constraints

Thursday, May 19, 2016 1:55 PM (10 minutes)

Presenter: DELABROUILLE, Jacques (CNRS, Laboratoire APC, Paris)

Session Classification: Parallel: Focal plane and Payload