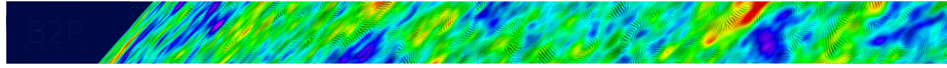


Towards a next space probe for CMB observations and cosmic origins exploration



Contribution ID: 91

Type: **not specified**

Cooling Chain

Thursday 19 May 2016 14:05 (10 minutes)

Presenters: VERMEULEN, Gerard (Institut Neel (CNRS)); PENNEC, Yan (Air Liquide, France)

Session Classification: Parallel: Focal plane and Payload