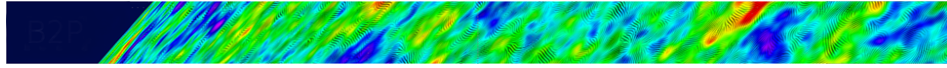


Towards a next space probe for CMB observations and cosmic origins exploration



Contribution ID: 97

Type: **not specified**

Guidelines for e2e Calibration plan

Thursday, May 19, 2016 3:35 PM (10 minutes)

Presenter: MARCO BERSANELLI, Marco (Professor of Astronomy and Astrophysics)

Session Classification: Parallel: Focal plane and Payload