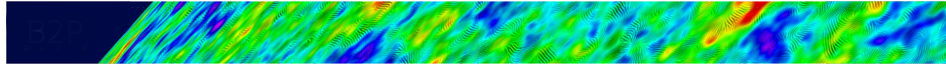


Towards a next space probe for CMB observations and cosmic origins exploration



Contribution ID: 108

Type: **not specified**

Forecasting statistical and systematic uncertainties of parametric component separation

Thursday, May 19, 2016 2:30 PM (10 minutes)

Presenter: ERRAND, Josquin

Session Classification: Parallel: Science and simulations