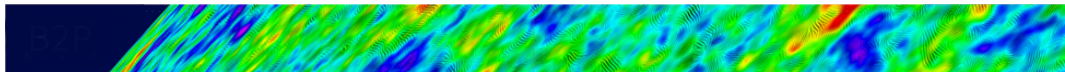


Session Program

May 17 - 20, 2016



Towards a next space probe for CMB observations and cosmic origins exploration

Japanese status

CERN, 222/R-001

Wed, May 18

2:00 PM

Japanese status: Japanese status

Session | Location: CERN, 222/R-001

2:00 - 2:30 PM

Japanese plans w.r.t. international collaboration

Speaker

Masashi Hazumi

3:00 PM

2:30 - 3:00 PM

Discussion : implications for the M5 proposal