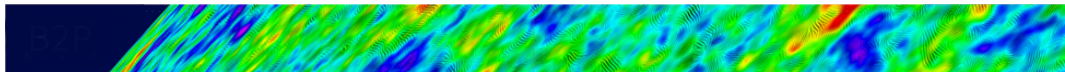


## **Session Program**

**May 17 - 20, 2016**



**Towards a next space probe for CMB  
observations and cosmic origins exploration**

***Parallel: Focal plane and Payload***

CERN, 222/R-001

# Thu, May 19

9:00 AM

## Parallel: Focal plane and Payload: Objective: prepare the CORE/LiteCORE instrument and payload

**Session** | **Location:** CERN, 40/S2-D01 - Salle Dirac | **Conveners:** Shaul Hanany, Paolo de Bernardis

### 9:00 - 9:20 AM Target sensitivity focal plane tradeoffs and requirements

#### Speakers

Michel Piat, Paolo de Bernardis

### 9:20 - 9:40 AM Telescope: baseline design

#### Speakers

Neil A. Trappe, Shaul Hanany

### 9:40 - 9:55 AM Discussion on telescope baseline

### 9:55 - 10:15 AM KIDs detectors + developments in France

#### Speaker

Martino Calvo

### 10:15 - 10:25 AM KIDs developments in Italy

#### Speaker

Paolo de Bernardis

### 10:25 - 10:35 AM CEB developments

#### Speaker

Leonid Kuzmin

### 10:35 - 10:45 AM Large-area TES developments in Italy

#### Speaker

Flavio Gatti

### 10:45 - 11:05 AM Detectors coupling

#### Speaker

Giampaolo Pisano

### 11:05 - 11:35 AM Discussion on sensors technology

### 11:35 - 11:55 AM Coffee Break

### 11:55 AM - 12:10 PM Readout technology in the US

#### Speaker

Joel Ullom

### 12:10 - 12:20 PM Readout technology in France

#### Speakers

Damien Prele, Martino Calvo

12:30 PM

12:20 - 12:30 PM

**Discussion on sensors/readout technology end of session**