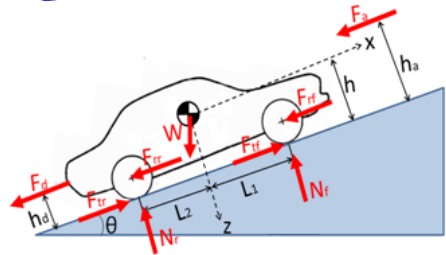


# LONGITUDINAL DYNAMICS RECAP



Frank Tecker  
CERN, BE-OP



The CERN Accelerator School

**Advanced Accelerator Physics Course  
Egham, UK, 3-15/9/2017**

Advanced CAS, Egham, September 2017

1

## Summary of the 2 lectures:

- Acceleration methods
- Accelerating structures
- Linac: Phase Stability + Energy-Phase oscillations
- Circular accelerators: Cyclotron / Synchrotron
- Dispersion Effects in Synchrotron, Transition
- Stability and Longitudinal Phase Space Motion
- Stationary Bucket
- Injection Matching
- Hamiltonian

Including selected topics from other CAS lectures :

- Linacs - *Alessandra Lombardi*
- RF Systems - *Erk Jensen, me*
- Timing, Synchronization & Longitudinal Aspects - *Heiko Damerau*
- Electron Beam Dynamics - *Lenny Rivkin*

Continued by

- Beam Instabilities - Longitudinal - *Kevin Li*

Advanced CAS, Egham, September 2017

2

## Particle types and acceleration

The accelerating system will depend upon the **evolution** of the **particle velocity**:

- **electrons** reach a **constant velocity** (~speed of light) at relatively low energy
- **heavy particles** reach a constant velocity only at very high energy
  - we need different types of resonators, optimized for different velocities
  - the **revolution frequency will vary**, so the **RF frequency will be changing**

**Particle rest mass:**

**electron** 0.511 MeV

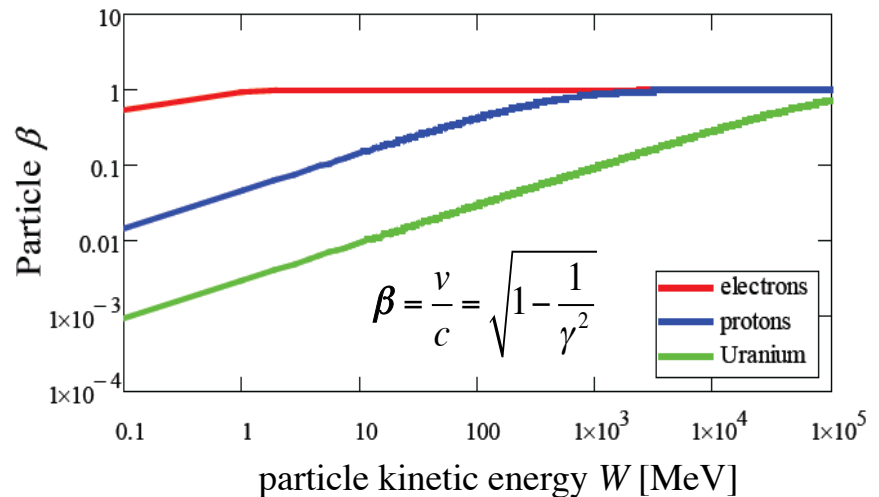
**proton** 938 MeV

**<sup>239</sup>U** ~220000 MeV

**Relativistic  
gamma factor:**

$$\gamma = \frac{E}{E_0} = \frac{m}{m_0}$$

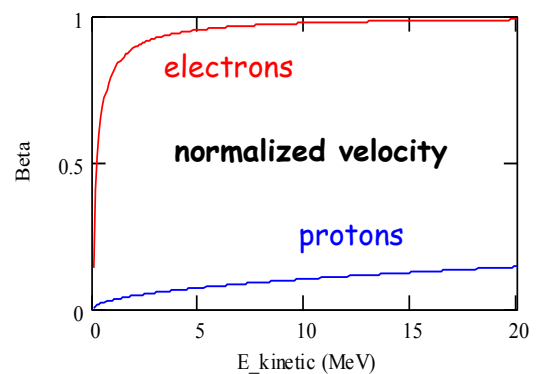
$$E = E_0 + W$$



## Velocity, Energy and Momentum

normalized velocity  $\beta = \frac{v}{c} = \sqrt{1 - \frac{1}{\gamma^2}}$

=> electrons almost reach the speed of light very quickly (few MeV range)

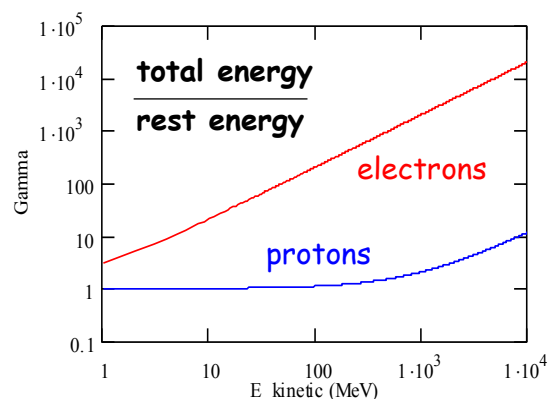


total energy  
rest energy

$$E = \gamma m_0 c^2$$

$$\gamma = \frac{E}{E_0} = \frac{m}{m_0} = \frac{1}{\sqrt{1 - \frac{v^2}{c^2}}} = \frac{1}{\sqrt{1 - \beta^2}}$$

**Momentum**  $p = mv = \frac{E}{c^2} \beta c = \beta \frac{E}{c} = \beta \gamma m_0 c$



## Acceleration + Energy Gain

May the force  
be with you!



To accelerate, we need a **force in the direction of motion!**

Newton-Lorentz Force  
on a charged particle:

$$\vec{F} = \frac{d\vec{p}}{dt} = e \left( \vec{E} + \vec{v} \times \vec{B} \right)$$

2<sup>nd</sup> term always perpendicular  
to motion  $\Rightarrow$  **no acceleration**

Hence, it is necessary to have an **electric field E**  
(preferably) **along the direction of the initial momentum (z)**,  
which changes the momentum  $p$  of the particle.

$$\frac{dp}{dt} = eE_z$$

In relativistic dynamics, total **energy E** and **momentum p** are **linked by**

$$E^2 = E_0^2 + p^2 c^2 \quad \Rightarrow \quad dE = v dp \quad \left( 2E dE = 2c^2 p dp \Leftrightarrow dE = c^2 mv / E dp = v dp \right)$$

The rate of **energy gain per unit length** of acceleration (along z) is then:

$$\frac{dE}{dz} = v \frac{dp}{dz} = \frac{dp}{dt} = eE_z$$

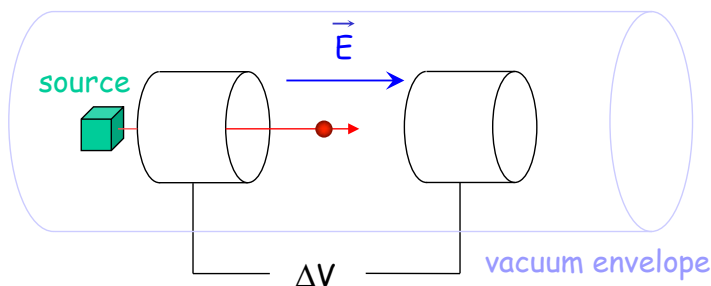
and the kinetic **energy gained** from the field along the z path is:

$$dW = dE = q E_z dz \quad \rightarrow \quad W = q \int E_z dz = qV \quad \begin{array}{l} - V \text{ is a potential} \\ - q \text{ the charge} \end{array}$$

Advanced CAS, Egham, September 2017

5

## Electrostatic Acceleration



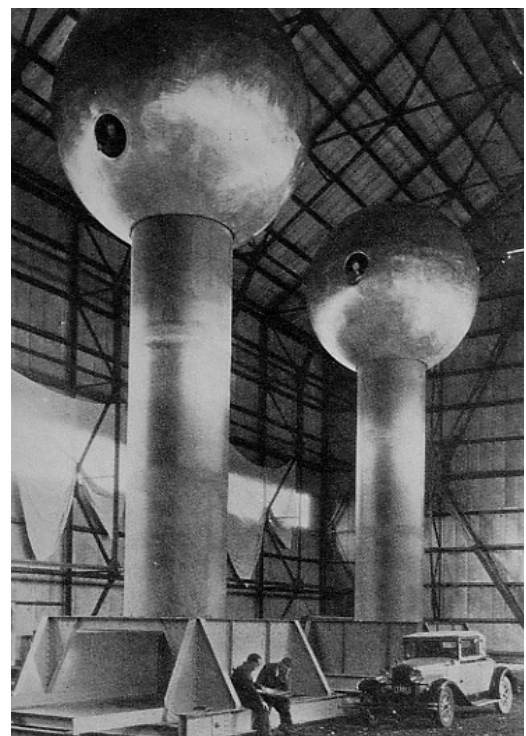
### Electrostatic Field:

Force:  $\vec{F} = \frac{d\vec{p}}{dt} = q \vec{E}$

Energy gain:  $W = q \Delta V$

used for first stage of acceleration:  
particle sources, electron guns,  
x-ray tubes

Limitation: **insulation problems**  
maximum high voltage ( $\sim 10$  MV)



Van-de-Graaf generator at MIT

Advanced CAS, Egham, September 2017

6

## Methods of Acceleration: Time varying fields

The electrostatic field is limited by insulation, the magnetic field does not accelerate.



From Maxwell's Equations:  $\vec{E} = -\vec{\nabla}\phi - \frac{\partial \vec{A}}{\partial t}$

$$\vec{B} = \mu\vec{H} = \vec{\nabla} \times \vec{A} \quad \text{or} \quad \vec{\nabla} \times \vec{E} = -\frac{\partial \vec{B}}{\partial t}$$

The electric field is derived from a scalar potential  $\phi$  and a vector potential  $A$   
The **time variation of the magnetic field  $H$  generates an electric field  $E$**

The **solution**: => **time varying electric fields !**

- 1) Induction
- 2) RF frequency fields

Consequence: We can **only** accelerate **bunched beam**!

Advanced CAS, Egham, September 2017

7

## Acceleration by Induction: The Betatron

It is based on the principle of a **transformer**:

- **primary side**: large electromagnet

- **secondary side**: electron beam.

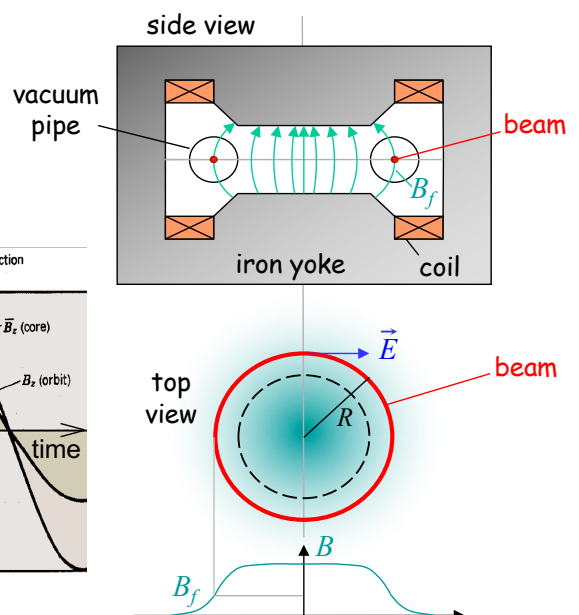
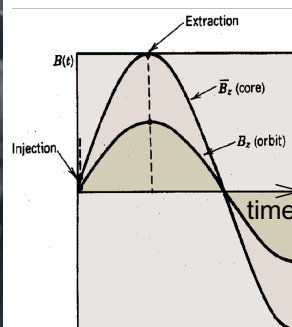
The ramping magnetic field is used to guide particles on a circular trajectory as well as for acceleration.

Limited by saturation in iron ( $\sim 300$  MeV  $e^-$ )

Used in industry and medicine, as they are compact accelerators for electrons



Donald Kerst with the first betatron, invented at the University of Illinois in 1940



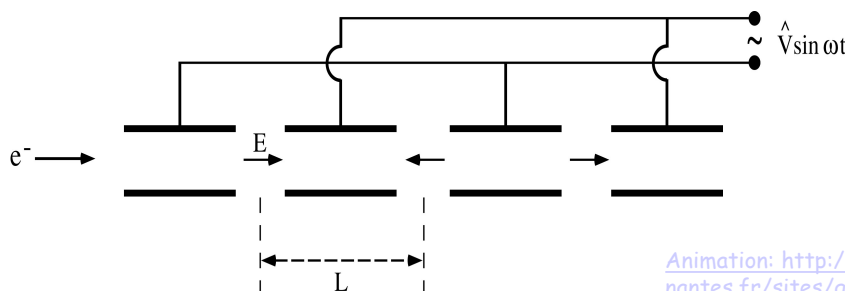
Advanced CAS, Egham, September 2017

8



## Radio-Frequency (RF) Acceleration

Electrostatic acceleration limited by isolation possibilities => use **RF** fields



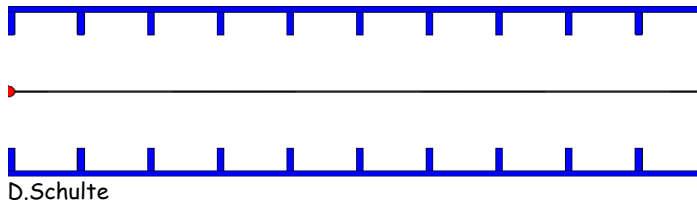
Widerøe-type structure

Animation: [http://www.sciences.univ-nantes.fr/sites/genevieve\\_tulloue/Meca/Charges/linac.html](http://www.sciences.univ-nantes.fr/sites/genevieve_tulloue/Meca/Charges/linac.html)

Cylindrical electrodes (**drift tubes**) separated by gaps and fed by a **RF generator**, as shown above, lead to an alternating electric field polarity

Synchronism condition  $\longrightarrow L = v T/2$

$v$  = particle velocity  
 $T$  = RF period



Similar for standing wave cavity as shown (with  $v \approx c$ )

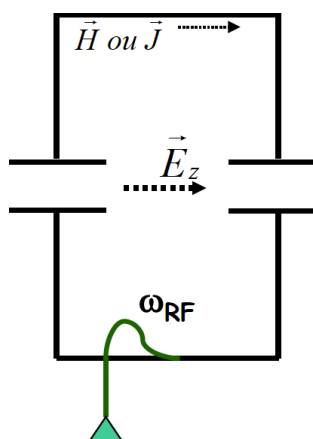
D.Schulte

Advanced CAS, Egham, September 2017

9

## Resonant RF Cavities

- Considering RF acceleration, it is obvious that when particles get high velocities the drift spaces get longer and one loses on the efficiency.  
=> The solution consists of using a **higher operating frequency**.
- The **power lost** by radiation, due to circulating currents on the electrodes, is **proportional to the RF frequency**.  
=> The solution consists of **enclosing the system in a cavity** which resonant frequency matches the RF generator frequency.

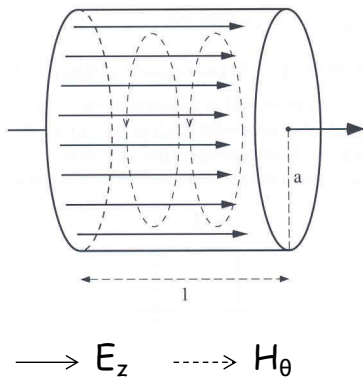


- The electromagnetic power is now constrained in the resonant volume
- Each such cavity can be independently powered from the RF generator
- Note however that joule losses will occur in the cavity walls (unless made of superconducting materials)

Advanced CAS, Egham, September 2017

10

## The Pill Box Cavity



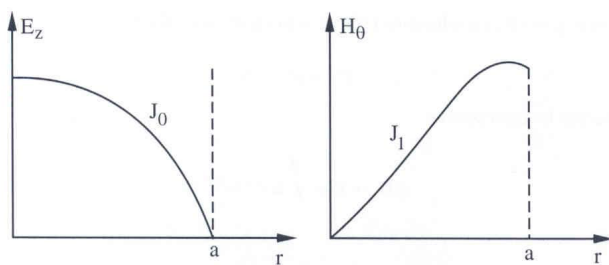
From Maxwell's equations one can derive the **wave equations**:

$$\nabla^2 A - \epsilon_0 \mu_0 \frac{\partial^2 A}{\partial t^2} = 0 \quad (A = E \text{ or } H)$$

**Solutions** for E and H are **oscillating modes**, at **discrete frequencies**, of types  $TM_{xyz}$  (transverse magnetic) or  $TE_{xyz}$  (transverse electric).

**Indices** linked to the **number of field knots** in polar co-ordinates  $\phi$ ,  $r$  and  $z$ .

For  $k \ll 2a$  the most simple mode,  $TM_{010}$ , has the lowest frequency, and has only two field components:



$$E_z = J_0(kr) e^{i\omega t}$$

$$H_\theta = -\frac{i}{Z_0} J_1(kr) e^{i\omega t}$$

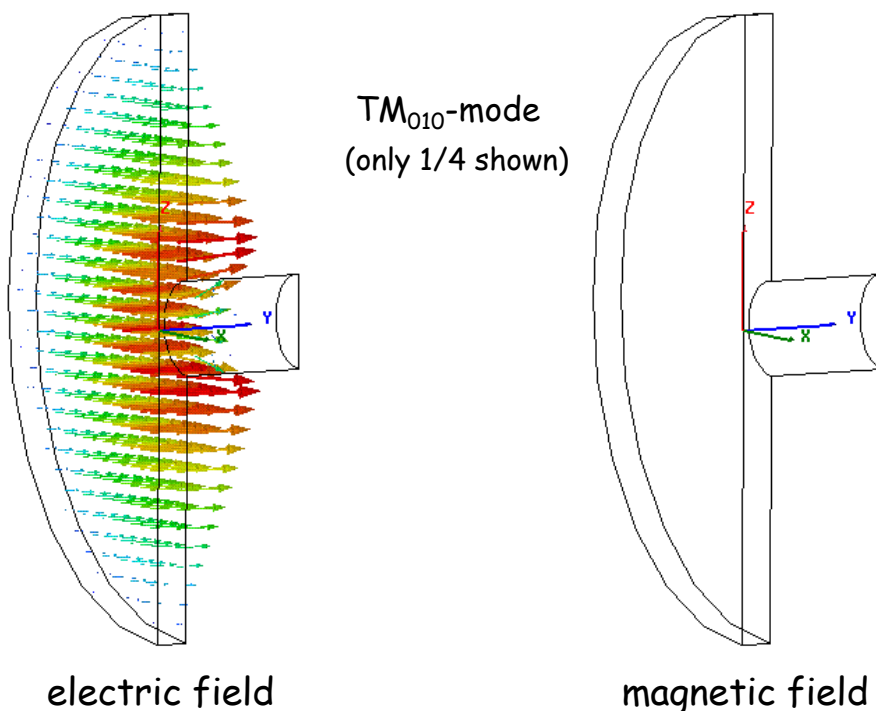
$$k = \frac{2\pi}{\lambda} = \frac{\omega}{c} \quad \lambda = 2.62a \quad Z_0 = 377\Omega$$

Advanced CAS, Egham, September 2017

11

## The Pill Box Cavity

One needs a hole for the beam pipe - circular waveguide below cutoff



$TM_{010}$ -mode  
(only 1/4 shown)

electric field

magnetic field

Advanced CAS, Egham, September 2017

12

## Transit time factor

The accelerating field varies during the passage of the particle  
 $\Rightarrow$  particle does not always see maximum field  $\Rightarrow$  effective acceleration smaller

Transit time factor  
 defined as:

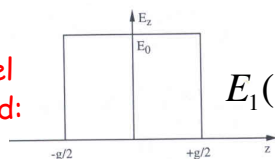
$$T_a = \frac{\text{energy gain of particle with } v = \beta c}{\text{maximum energy gain (particle with } v \rightarrow \infty)}$$

In the general case, the transit time factor is:

for  $E(s, r, t) = E_1(s, r) \cdot E_2(t)$

$$T_a = \frac{\left| \int_{-\infty}^{+\infty} E_1(s, r) \cos\left(\omega_{RF} \frac{s}{v}\right) ds \right|}{\int_{-\infty}^{+\infty} E_1(s, r) ds}$$

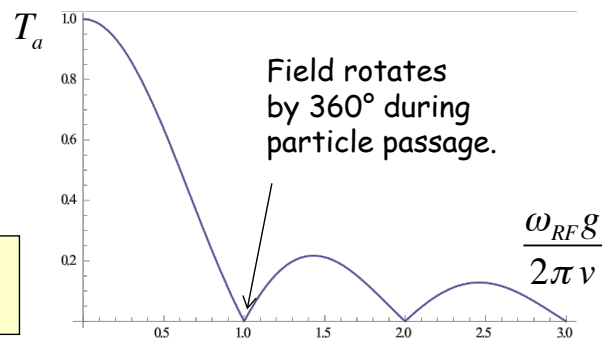
Simple model  
 uniform field:



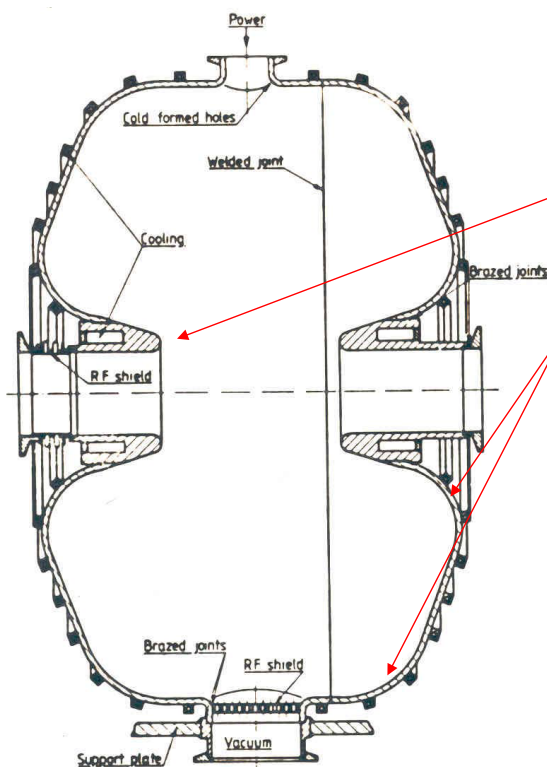
$$E_1(s, r) = \frac{V_{RF}}{g}$$

follows:  $T_a = \left| \sin \frac{\omega_{RF} g}{2v} \right| / \frac{\omega_{RF} g}{2v}$

$0 < T_a < 1$ ,  $T_a \rightarrow 1$  for  $g \rightarrow 0$ , smaller  $\omega_{RF}$   
 Important for low velocities (ions)



## The Pill Box Cavity (2)



The design of a cavity can be sophisticated in order to improve its performances:

- A nose cone can be introduced in order to concentrate the electric field around the axis
- Round shaping of the corners allows a better distribution of the magnetic field on the surface and a reduction of the Joule losses. It also prevents from multipactoring effects (e- emission and acceleration).

A good cavity efficiently transforms the RF power into accelerating voltage.

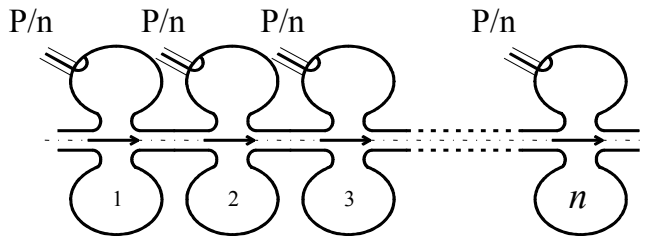
Simulation codes allow precise calculation of the properties.

## Multi-Cell Cavities

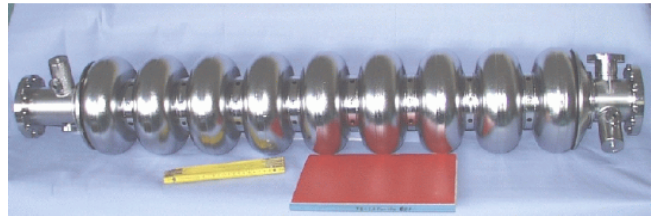
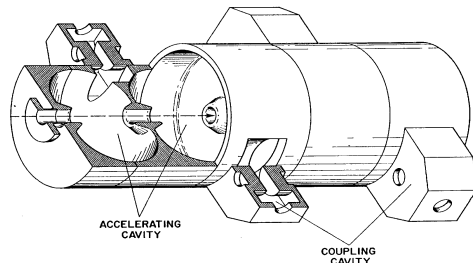
Acceleration of one cavity limited  $\Rightarrow$  distribute power over several cells

Each cavity receives  $P/n$

Since the field is proportional  $\sqrt{P}$ , you get  $\sum E_i \propto n\sqrt{P/n} = \sqrt{n}E_0$



Instead of distributing the power from the amplifier, one might as well **couple the cavities**, such that the power automatically distributes, or have a **cavity with many gaps** (e.g. drift tube linac).



Advanced CAS, Egham, September 2017

15

## Multi-Cell Cavities - Modes

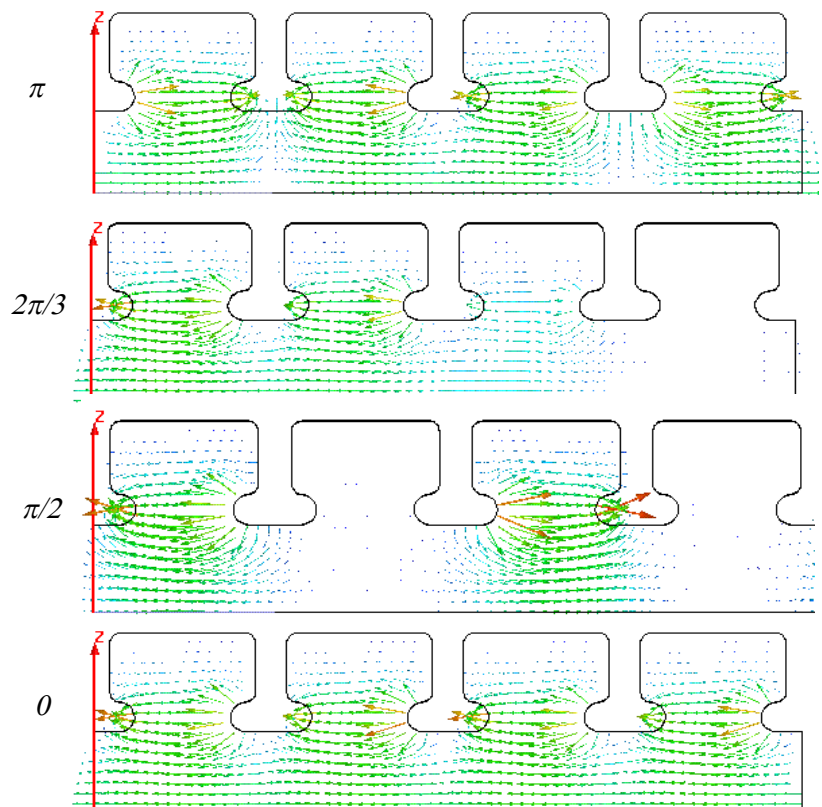
The **phase relation** between gaps is **important!**

**Coupled harmonic oscillator**

$\Rightarrow$  **Modes**, named after the **phase difference** between adjacent cells.

Relates to different synchronism conditions for the cell length  $L$

Mode	$L$
0 ( $2\pi$ )	$\beta\lambda$
$\pi/2$	$\beta\lambda/4$
$2\pi/3$	$\beta\lambda/3$
$\pi$	$\beta\lambda/2$



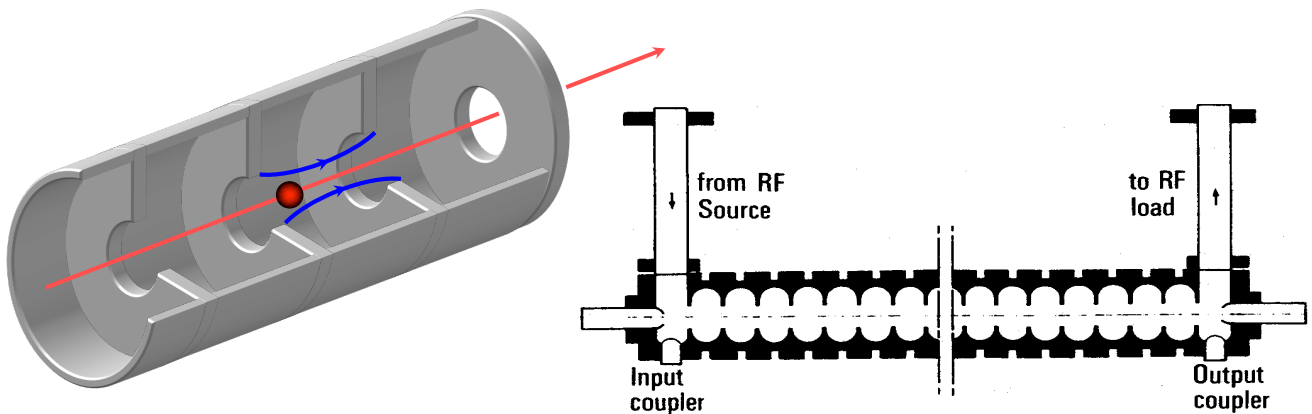
Advanced CAS, Egham, September 2017

16

## Disc-Loaded Traveling-Wave Structures

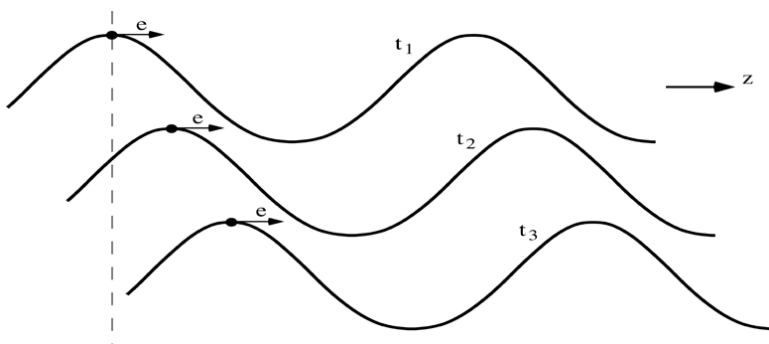
When particles get **ultra-relativistic** ( $v \sim c$ ) the drift tubes become very long unless the operating frequency is increased. Late 40's the development of radar led to high power transmitters (klystrons) at very high frequencies (3 GHz).

Next came the idea of suppressing the drift tubes using **traveling waves**. However to get a continuous acceleration the phase velocity of the wave needs to be adjusted to the particle velocity.



**solution: slow wave guide with irises**  $\Rightarrow$  iris loaded structure

## The Traveling Wave Case



**The particle travels along with the wave, and  $k$  represents the wave propagation factor.**

$$E_z = E_0 \cos(\omega_{RF}t - kz)$$

$$k = \frac{\omega_{RF}}{v_\phi} \quad \text{wave number}$$

$$z = v(t - t_0)$$

$v_\phi$  = phase velocity  
 $v$  = particle velocity

$$E_z = E_0 \cos\left(\omega_{RF}t - \omega_{RF} \frac{v}{v_\phi} t - \phi_0\right)$$

**If synchronism satisfied:  $v = v_\phi$  and  $E_z = E_0 \cos \phi_0$**   
**where  $\phi_0$  is the RF phase seen by the particle.**



## Cavity Parameters: Quality Factor Q

The **total energy stored** is 
$$W = \iiint_{cavity} \left( \frac{\epsilon}{2} |\vec{E}|^2 + \frac{\mu}{2} |\vec{H}|^2 \right) dV.$$

- **Quality Factor Q** (caused by wall losses) defined as

$$Q_0 = \frac{\omega_0 W}{P_{loss}}$$

Ratio of stored energy W and dissipated power  $P_{loss}$  on the walls in one RF cycle

The Q factor determines the maximum energy the cavity can fill to with a given input power.

Larger Q => less power needed to sustain stored energy.

The Q factor is  $2\pi$  times the number of rf cycles it takes to dissipate the energy stored in the cavity (down by 1/e).

- function of the geometry and the **surface resistance of the material**:  
superconducting (niobium) :  $Q = 10^{10}$   
normal conducting (copper) :  $Q = 10^4$

Advanced CAS, Egham, September 2017

19

## Important Parameters of Accelerating Cavities

- **Accelerating voltage  $V_{acc}$**

$$V_{acc} = \int_{-\infty}^{\infty} E_z e^{-i\frac{\omega z}{\beta c}} dz$$

Measure of the acceleration

- **R upon Q**

$$\frac{R}{Q} = \frac{|V_{acc}|^2}{2\omega_0 W}$$

Relationship between acceleration  $V_{acc}$  and stored energy W

independent from material!

**Attention: Different definitions are used!**

- **Shunt Impedance R**

$$R = \frac{|V_{acc}|^2}{2P_{loss}}$$

Relationship between acceleration  $V_{acc}$  and wall losses  $P_{loss}$

depends on  
- material  
- cavity mode  
- geometry

Advanced CAS, Egham, September 2017

20

## Important Parameters of Accelerating Cavities (cont.)

### - Fill Time $t_F$

#### - standing wave cavities:

$$P_{loss} = -\frac{dW}{dt} = \frac{\omega}{Q} W$$

Exponential decay of the stored energy  $W$  due to losses

$$t_F = \frac{Q}{\omega}$$

time for the field to decrease by  $1/e$  after the cavity has been filled  
measure of how fast the stored energy is dissipated on the wall

Several fill times needed to fill the cavity!

#### - travelling wave cavities:

time needed for the electromagnetic energy to fill the cavity of length  $L$

$$t_F = \int_0^L \frac{dz}{v_g(z)}$$

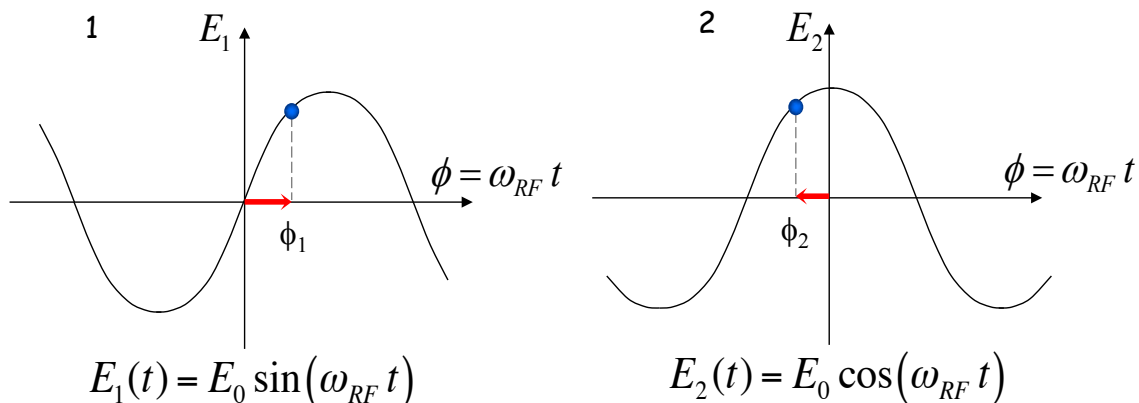
$v_g$ : velocity at which the energy propagates through the cavity

Cavity is **completely filled** after **1** fill time!

## Common Phase Conventions

1. For **circular accelerators**, the origin of time is taken at the **zero crossing** of the RF voltage with positive slope
2. For **linear accelerators**, the origin of time is taken at the positive **crest** of the RF voltage

Time  $t = 0$  chosen such that:

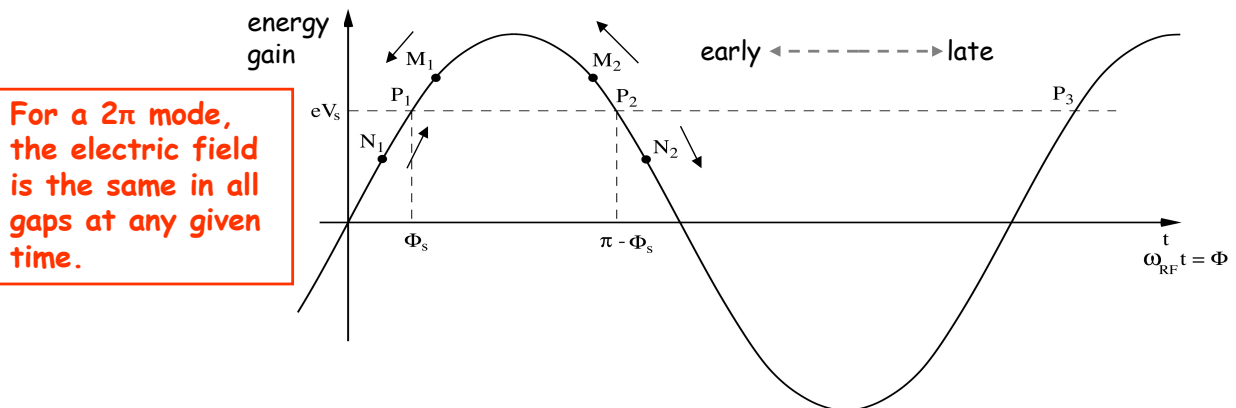


3. I will stick to **convention 1** in the following to avoid confusion

## Principle of Phase Stability (Linac)

Let's consider a succession of accelerating gaps, operating in the  $2\pi$  mode, for which the synchronism condition is fulfilled for a phase  $\Phi_s$ .

$eV_s = e\hat{V} \sin \Phi_s$  is the energy gain in one gap for the particle to reach the next gap with the same RF phase:  $P_1, P_2, \dots$  are fixed points.

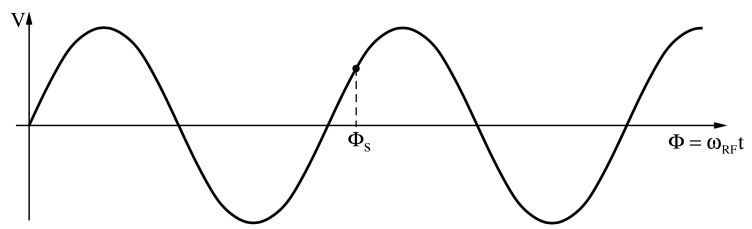
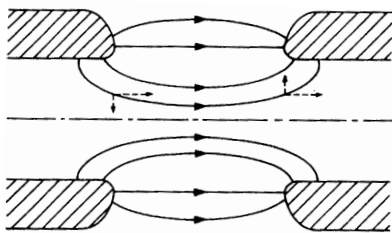


If an **energy increase** is transferred into a **velocity increase**  $\Rightarrow$   
 $M_1$  &  $N_1$  will move towards  $P_1 \Rightarrow$  **stable**  
 $M_2$  &  $N_2$  will go away from  $P_2 \Rightarrow$  **unstable**  
 (Highly relativistic particles have no significant velocity change)

Advanced CAS, Egham, September 2017

23

## A Consequence of Phase Stability



The divergence of the field is zero according to Maxwell :

$$\nabla \cdot \vec{E} = 0 \Rightarrow \frac{\partial E_x}{\partial x} + \frac{\partial E_z}{\partial z} = 0 \Rightarrow \frac{\partial E_x}{\partial x} = -\frac{\partial E_z}{\partial z}$$

Transverse fields

- **focusing** at the **entrance** and
- **defocusing** at the **exit** of the cavity.

Electrostatic case: Energy gain inside the cavity leads to focusing

RF case: **Field increases during passage  $\Rightarrow$  transverse defocusing!**

**External focusing (solenoid, quadrupole) is then necessary**

Advanced CAS, Egham, September 2017

24

## Energy-phase Oscillations (Small Amplitude) (1)

- Rate of **energy gain** for the **synchronous particle**:

$$\frac{dE_s}{dz} = \frac{dp_s}{dt} = eE_0 \sin \phi_s$$

- Rate of **energy gain** for a **non-synchronous particle**, expressed in **reduced variables**,  $w = W - W_s = E - E_s$  and  $\varphi = \phi - \phi_s$  :

$$\frac{dw}{dz} = eE_0 [\sin(\phi_s + \varphi) - \sin \phi_s] \approx eE_0 \cos \phi_s \varphi \quad (\text{small } \varphi)$$

- Rate of change of the **phase** with respect to the synchronous one:

$$\frac{d\varphi}{dz} = \omega_{RF} \left( \frac{dt}{dz} - \left( \frac{dt}{dz} \right)_s \right) = \omega_{RF} \left( \frac{1}{v} - \frac{1}{v_s} \right) \approx -\frac{\omega_{RF}}{v_s^2} (v - v_s)$$

Leads finally to:

$$\frac{d\varphi}{dz} = -\frac{\omega_{RF}}{m_0 v_s^3 \gamma_s^3} w$$

## Energy-phase Oscillations (Small Amplitude) (2)

Combining the two 1<sup>st</sup> order equations into a 2<sup>nd</sup> order equation gives the equation of a **harmonic oscillator**:

$$\frac{d^2 \varphi}{dz^2} + \Omega_s^2 \varphi = 0$$

with

$$\Omega_s^2 = \frac{eE_0 \omega_{RF} \cos \phi_s}{m_0 v_s^3 \gamma_s^3}$$

Slower for higher energy!

Stable harmonic oscillations imply:

$$\Omega_s^2 > 0 \quad \text{and real}$$

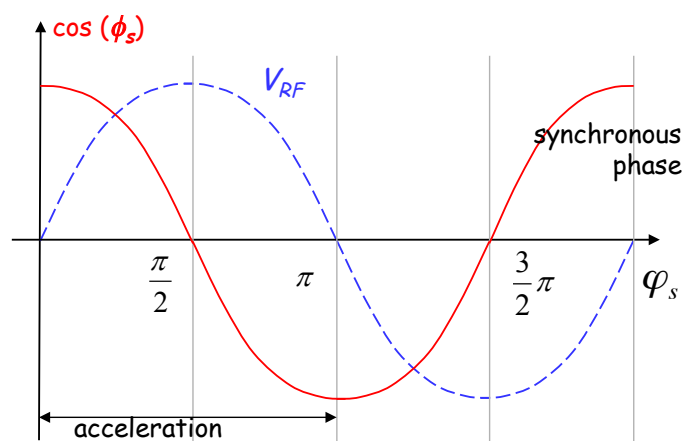
hence:  $\cos \phi_s > 0$

And since acceleration also means:

$$\sin \phi_s > 0$$

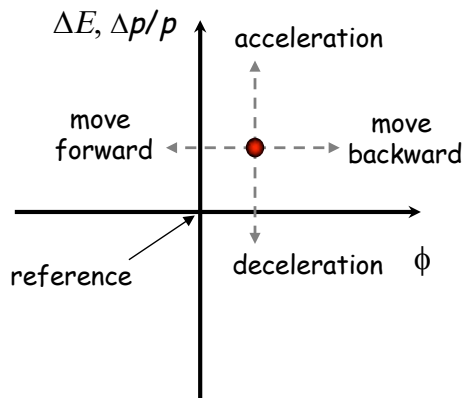
You finally get the result for the **stable phase range**:

$$0 < \phi_s < \frac{\pi}{2}$$

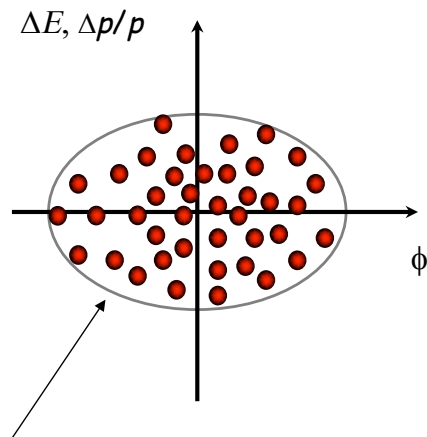


## Longitudinal phase space

The **energy - phase oscillations** can be drawn in **phase space**:



The particle trajectory in the phase space  $(\Delta p/p, \phi)$  describes its longitudinal motion.



Emittance: phase space area including all the particles

NB: if the emittance contour correspond to a possible orbit in phase space, its shape does not change with time (matched beam)

## Longitudinal Dynamics - Electrons

At **relativistic velocity phase oscillations stop** - the bunch is frozen longitudinally.  
 $\Rightarrow$  Acceleration can be at the crest of the RF for maximum energy gain.

Electrons injected into a TW structure designed for  $v=c$ :

- $\rightarrow$  at  $v=c$  remain at the injection phase.
- $\rightarrow$  at  $v < c$  will move from injection phase  $\phi_0$  to an asymptotic phase  $\phi$ , which depends on gradient  $E_0$  and  $\beta_0$  at injection.

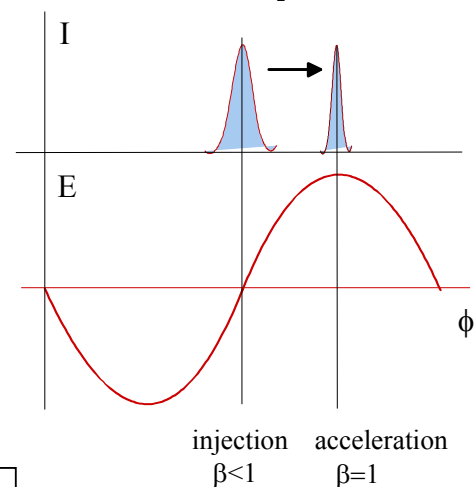
The beam can be injected with an offset in phase, to reach the crest of the wave at  $\beta=1$

**Capture condition**, relating gradient  $E_0$  and  $\beta_0$ :

$$E_0 \geq \frac{2\pi}{\lambda_g} \frac{mc^2}{q} \left[ \sqrt{\frac{1-\beta_0}{1+\beta_0}} \right]$$

Example:  $\lambda=10\text{cm} \rightarrow W_{\text{in}}=150\text{ keV}$  for  $E_0=8\text{ MV/m}$ .

$$\cos \phi = \cos \phi_0 + \frac{2\pi}{\lambda_g} \frac{mc^2}{qE_0} \left[ \sqrt{\frac{1-\beta}{1+\beta}} - \sqrt{\frac{1-\beta_0}{1+\beta_0}} \right]$$



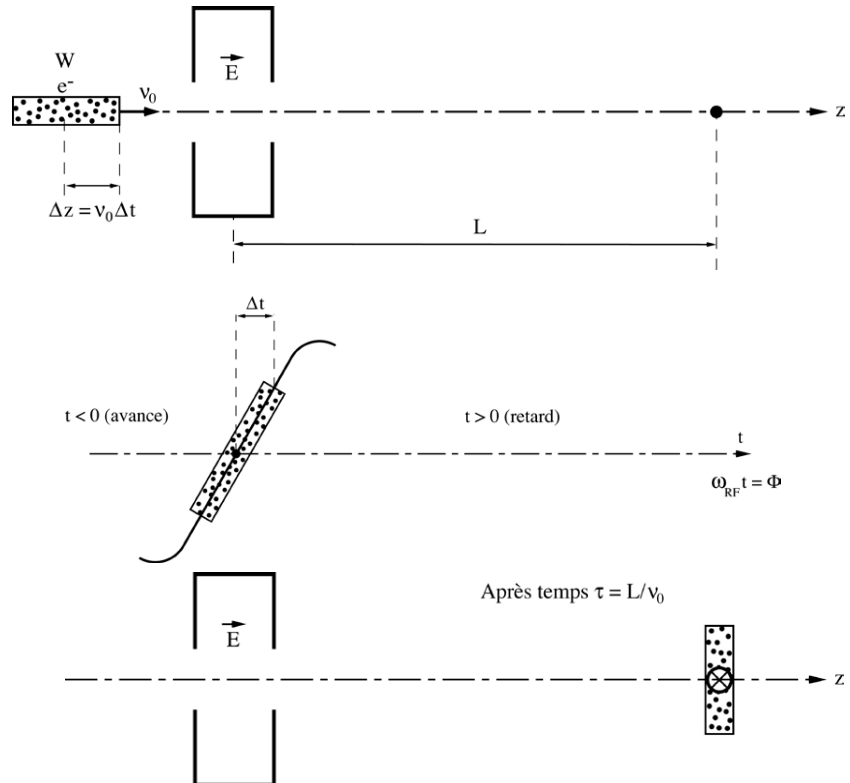
In high current linacs, a bunching and pre-acceleration sections up to 4-10 MeV prepares the injection in the TW structure (that occurs already on the crest)



## Bunching with a Pre-buncher

A long bunch coming from the gun enters an RF cavity. The reference particle is the one which has no velocity change. The others get accelerated or decelerated, so the bunch gets an energy and velocity modulation.

After a distance  $L$  bunch gets shorter: **bunching effect**. This short bunch can now be captured more efficiently by a TW structure ( $v_\phi = c$ ).



Advanced CAS, Egham, September 2017

29

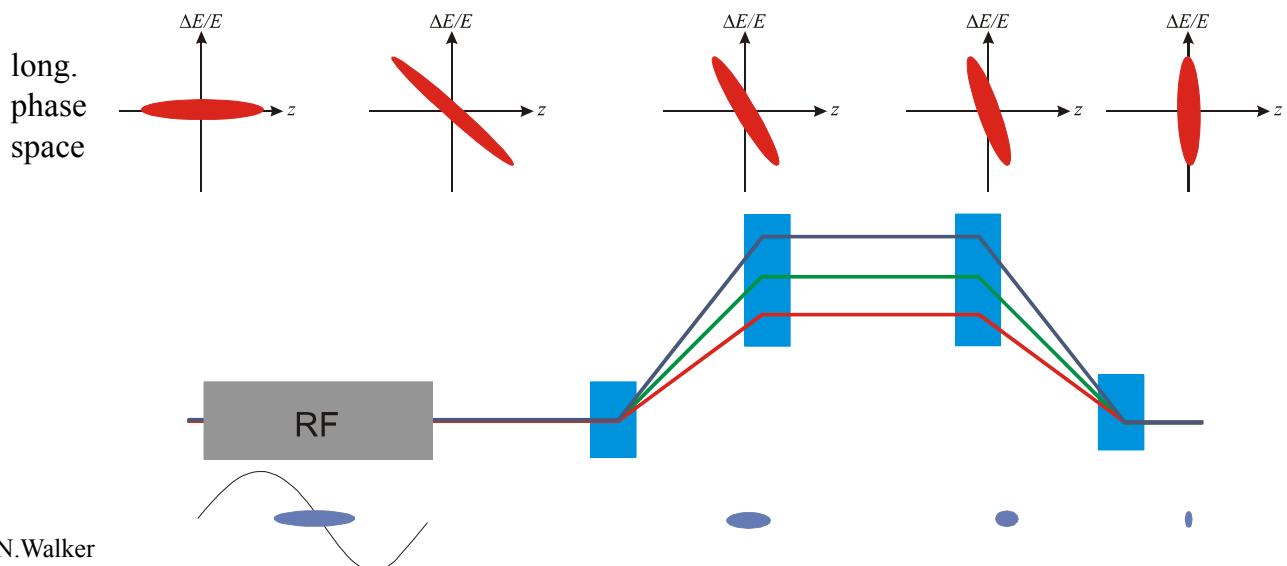
## Bunch compression

At ultra-relativistic energies ( $\gamma \gg 1$ ) the longitudinal motion is frozen. For linear  $e^+/e^-$  colliders, you need very short bunches (few 100-50  $\mu\text{m}$ ).

Solution: introduce **energy/time correlation** + a magnetic **chicane**.

Increases energy spread in the bunch  $\Rightarrow$  chromatic effects

$\Rightarrow$  **compress at low energy** before further acceleration to reduce relative  $\Delta E/E$



N. Walker

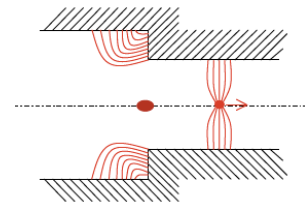
Advanced CAS, Egham, September 2017

30

## Longitudinal Wake Fields - Beamloading

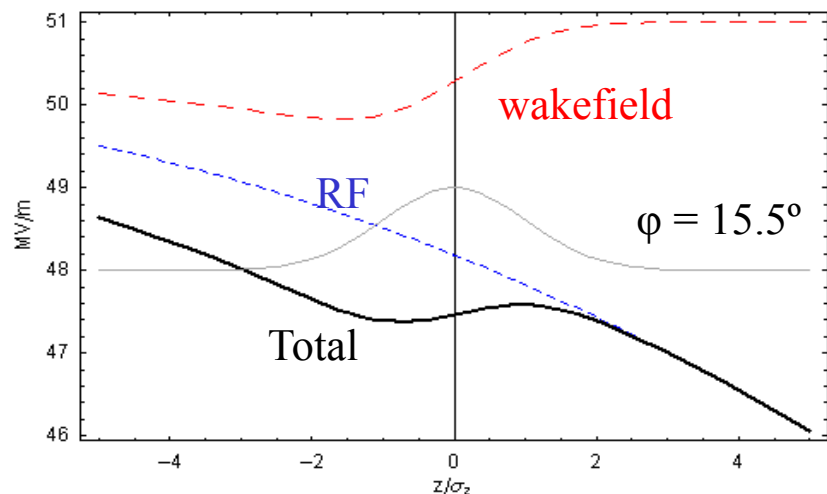
Beam induces wake fields in cavities (in general when chamber profile changing)  
 $\Rightarrow$  **decreasing RF field** in cavities  
 (beam absorbs RF power when accelerated)

Particles within a bunch see a decreasing field  
 $\Rightarrow$  energy gain different **within** the single bunch



Locating bunch **off-crest**  
 at the best RF phase  
**minimises energy spread**

Example: Energy gain  
 along the bunch  
 in the NLC linac (TW):



Advanced CAS, Egham, September 2017

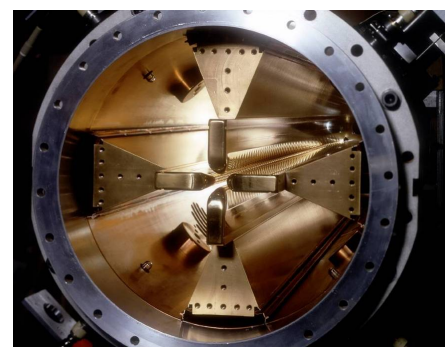
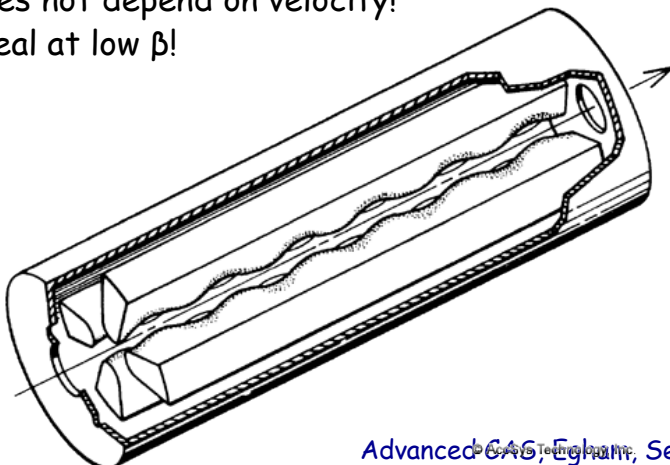
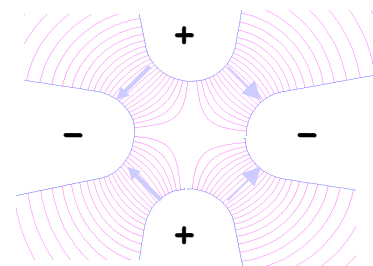
31

## The Radio-Frequency Quadrupole - RFQ

Initial acceleration difficult for protons and ions at low energy  
 (space charge, low  $\beta \Rightarrow$  short cell dimensions, bunching needed)

**RFQ = Electric quadrupole**  
 focusing channel + bunching + acceleration

Alternating electric quadrupole field gives  
 transverse focusing like magnetic focusing channel.  
 Does not depend on velocity!  
 Ideal at low  $\beta$ !



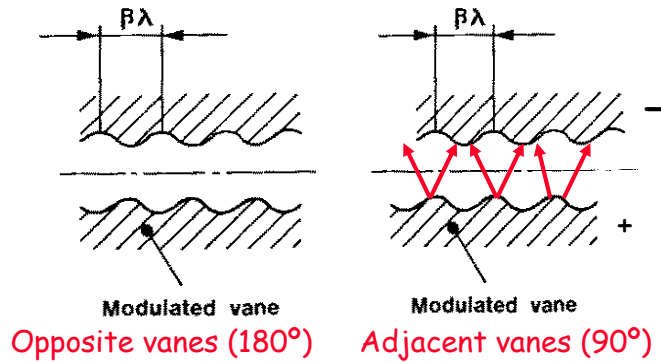
Advanced CAS, Egham, September 2017

32

## The Radio-Frequency Quadrupole - RFQ

The vanes have a **longitudinal modulation** with period =  $\beta\lambda$   
 → this creates a **longitudinal component of the electric field**.

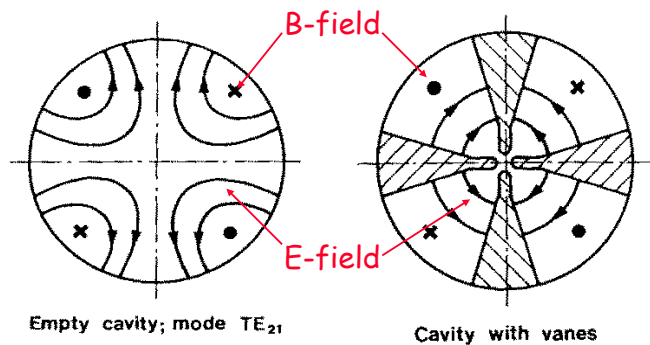
The modulation corresponds exactly to a series of RF gaps and can provide acceleration.



### RF Field excitation:

An empty **cylindrical cavity** can be excited on **different modes**.

Some of these modes have only **transverse electric field** (the TE modes), and one uses in particular the "**quadrupole**" mode, the  $TE_{210}$ .



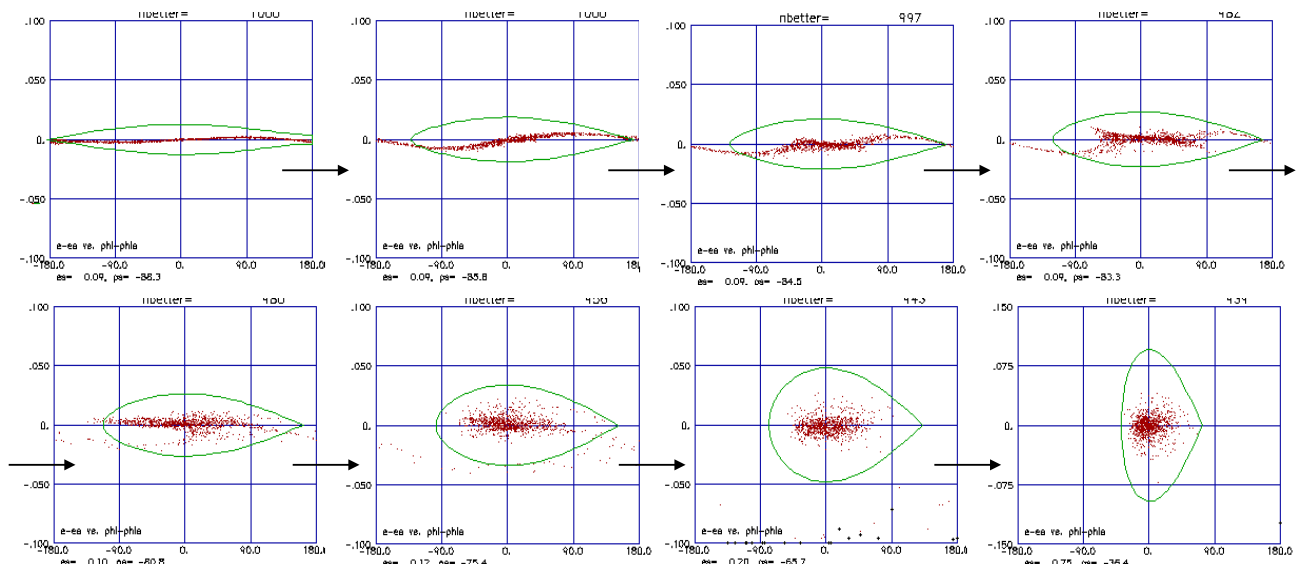
Advanced CAS, Egham, September 2017

33

## RFQ Design + Longitudinal Phase Space

**RFQ design:** The modulation period can be slightly adjusted to change the phase of the beam inside the RFQ cells, and the amplitude of the modulation can be changed to change the accelerating gradient

→ start with some bunching cells, progressively bunch the beam (**adiabatic bunching channel**), and only in the last cells accelerate.



Longitudinal beam profile of a proton beam along the CERN RFQ2

Advanced CAS, Egham, September 2017

34

## Summary up to here...

- **Acceleration by electric fields**, static fields limited  
=> time-varying fields
- **Synchronous condition** needs to be fulfilled for acceleration
- Particles perform **oscillation** around synchronous phase
- visualize oscillations in phase space
- Electrons are quickly relativistic, speed does not change  
use traveling wave structures for acceleration
- Protons and ions
  - RFQ for bunching and first acceleration
  - need changing structure geometry

## Summary: Relativity + Energy Gain

**Newton-Lorentz Force**  $\vec{F} = \frac{d\vec{p}}{dt} = e \left( \vec{E} + \vec{v} \times \vec{B} \right)$  2<sup>nd</sup> term always perpendicular to motion => no acceleration

### Relativistics Dynamics

$$\beta = \frac{v}{c} = \sqrt{1 - \frac{1}{\gamma^2}} \quad \gamma = \frac{E}{E_0} = \frac{m}{m_0} = \frac{1}{\sqrt{1 - \beta^2}}$$

$$p = mv = \frac{E}{c^2} \beta c = \beta \frac{E}{c} = \beta \gamma m_0 c$$

$$E^2 = E_0^2 + p^2 c^2 \quad \longrightarrow \quad dE = v dp$$

$$\frac{dE}{dz} = v \frac{dp}{dz} = \frac{dp}{dt} = e E_z$$

$$dE = dW = e E_z dz \quad \rightarrow \quad W = e \int E_z dz$$

### RF Acceleration

$$E_z = \hat{E}_z \sin \omega_{RF} t = \hat{E}_z \sin \phi(t)$$

$$\int \hat{E}_z dz = \hat{V}$$

$$W = e \hat{V} \sin \phi$$

**(neglecting transit time factor)**

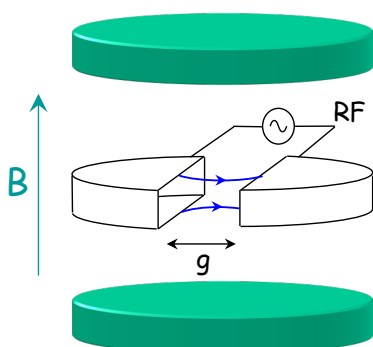
The field will change during the passage of the particle through the cavity  
=> effective energy gain is lower

## Cyclotron Synchrotron

Advanced CAS, Egham, September 2017

37

### Circular accelerators: Cyclotron



Used for protons, ions

$B = \text{constant}$

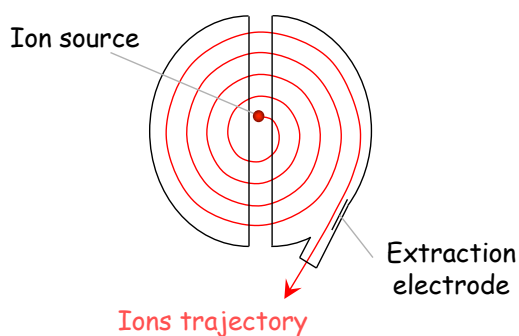
$\omega_{RF} = \text{constant}$

Synchronism condition



$$\omega_s = \omega_{RF}$$

$$2\pi \rho = v_s T_{RF}$$



Cyclotron frequency  $\omega = \frac{q B}{m_0 \gamma}$

1.  $\gamma$  increases with the energy  
 $\Rightarrow$  no exact synchronism
2. if  $v \ll c \Rightarrow \gamma \cong 1$

[Cyclotron Animation](#)

Animation: [http://www.sciences.univ-nantes.fr/sites/genevieve\\_tulloue/Meca/Charges/cyclotron.html](http://www.sciences.univ-nantes.fr/sites/genevieve_tulloue/Meca/Charges/cyclotron.html)

Advanced CAS, Egham, September 2017

38



## Cyclotron / Synchrocyclotron



TRIUMF 520 MeV cyclotron

Vancouver - Canada



CERN 600 MeV synchrocyclotron

**Synchrocyclotron:** Same as cyclotron, except a modulation of  $\omega_{RF}$

$B$  = constant

$\gamma \omega_{RF}$  = constant

$\omega_{RF}$  decreases with time

The condition:

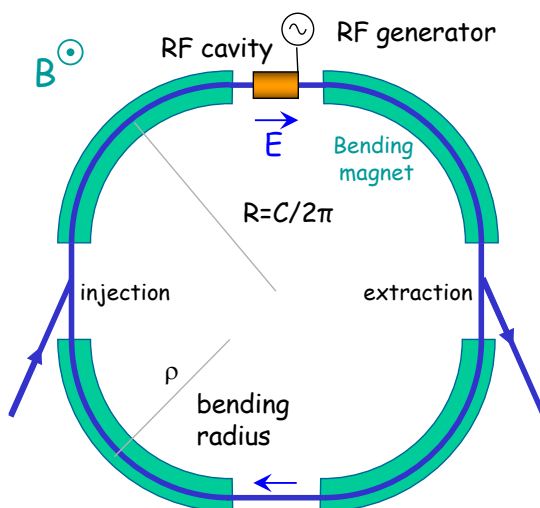
$$\omega_s(t) = \omega_{RF}(t) = \frac{q B}{m_0 \gamma(t)}$$

Allows to go beyond the non-relativistic energies

Advanced CAS, Egham, September 2017

39

## Circular accelerators: The Synchrotron



Synchronism condition



1. **Constant orbit** during acceleration
2. To keep particles on the closed orbit,  **$B$  should increase** with time
3.  $\omega$  and  $\omega_{RF}$  **increase** with energy

RF frequency can be multiple of revolution frequency

$$\omega_{RF} = h \omega$$

$$T_s = h T_{RF}$$

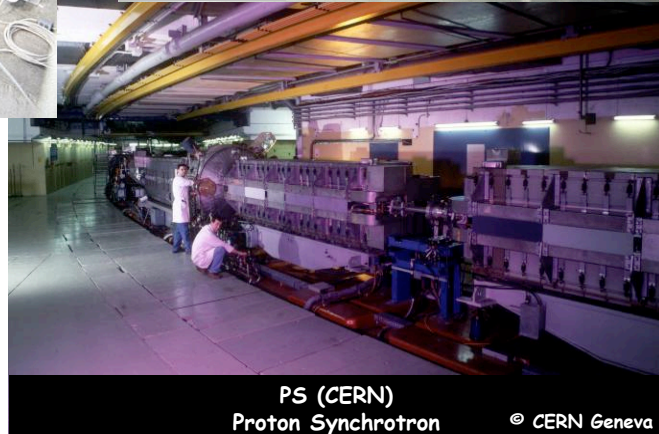
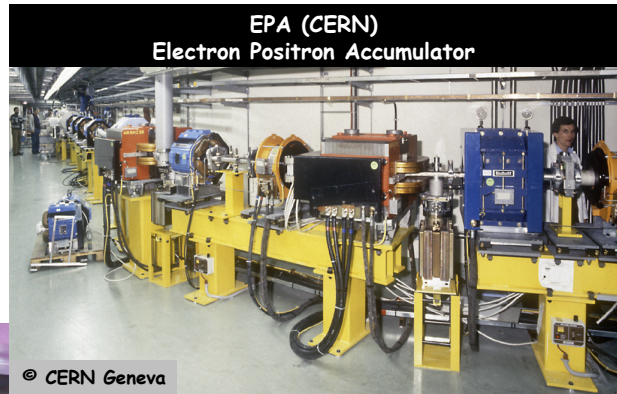
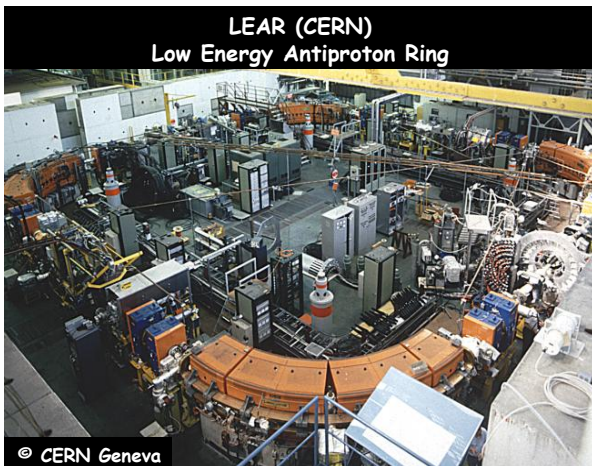
$$\frac{2\pi R}{v_s} = h T_{RF}$$

$h$  integer,  
**harmonic number:**  
number of RF cycles  
per revolution

Advanced CAS, Egham, September 2017

40

## Circular accelerators: The Synchrotron



Examples of different  
proton and electron  
synchrotrons at CERN

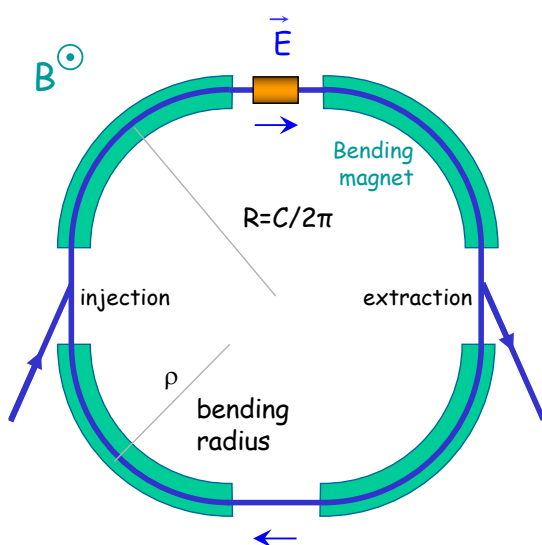
+ LHC (of course!)

Advanced CAS, Egham, September 2017

41

## The Synchrotron

The **synchrotron** is a synchronous accelerator since there is a **synchronous RF phase** for which the energy gain **fits** the **increase of the magnetic field** at each turn. That implies the following operating conditions:



$$e\hat{V} \sin \phi \longrightarrow \text{Energy gain per turn}$$

$$\phi = \phi_s = cte \longrightarrow \text{Synchronous particle}$$

$$\omega_{RF} = h\omega \longrightarrow \text{RF synchronism (h - harmonic number)}$$

$$\rho = cte \quad R = cte \longrightarrow \text{Constant orbit}$$

$$B\rho = \frac{P}{e} \Rightarrow B \longrightarrow \text{Variable magnetic field}$$

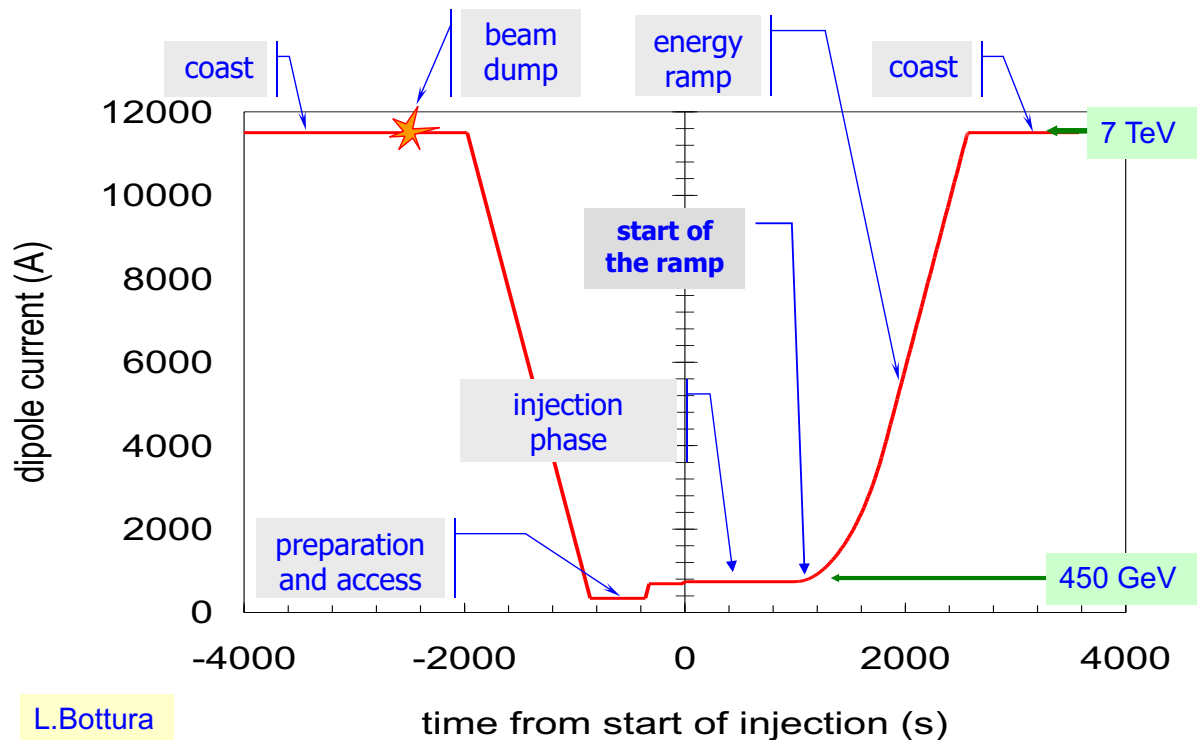
If  $v \approx c$ ,  $\omega$  hence  $\omega_{RF}$  remain constant (ultra-relativistic  $e^-$ )

Advanced CAS, Egham, September 2017

42

## The Synchrotron - LHC Operation Cycle

The magnetic **field** (dipole current) is **increased during the acceleration**.



L.Bottura

Advanced CAS, Egham, September 2017

43

## The Synchrotron - Energy ramping

**Energy ramping by increasing the B field** (frequency has to follow  $\nu$ ):

$$p = eB\rho \Rightarrow \frac{dp}{dt} = e\rho \dot{B} \Rightarrow (\Delta p)_{turn} = e\rho \dot{B} T_r = \frac{2\pi e\rho R \dot{B}}{\nu}$$

Since:  $E^2 = E_0^2 + p^2 c^2 \Rightarrow \Delta E = \nu \Delta p$

$$(\Delta E)_{turn} = (\Delta W)_s = 2\pi e\rho R \dot{B} = e\hat{V} \sin\phi_s$$

**Stable phase  $\phi_s$  changes during energy ramping**

$$\sin\phi_s = 2\pi\rho R \frac{\dot{B}}{\hat{V}_{RF}} \Rightarrow \phi_s = \arcsin\left(2\pi\rho R \frac{\dot{B}}{\hat{V}_{RF}}\right)$$

- The number of **stable synchronous particles** is equal to the **harmonic number  $h$** . They are equally spaced along the circumference.
- Each synchronous particle satisfies the relation  $p=eB\rho$ . They have the nominal energy and follow the nominal trajectory.

Advanced CAS, Egham, September 2017

44

## The Synchrotron - Frequency change

During the energy ramping, the RF frequency **increases** to follow the increase of the revolution frequency :

$$\omega = \frac{\omega_{RF}}{h} = \omega(B, R_s)$$

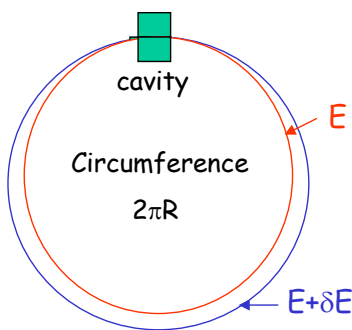
Hence:  $\frac{f_{RF}(t)}{h} = \frac{v(t)}{2\pi R_s} = \frac{1}{2\pi} \frac{ec^2}{E_s(t)} \frac{\rho}{R_s} B(t)$  ( using  $p(t) = eB(t)\rho$ ,  $E = mc^2$  )

Since  $E^2 = (m_0c^2)^2 + p^2c^2$  the RF frequency must follow the variation of the B field with the law

$$\frac{f_{RF}(t)}{h} = \frac{c}{2\pi R_s} \left\{ \frac{B(t)^2}{(m_0c^2 / e\rho)^2 + B(t)^2} \right\}^{1/2}$$

This asymptotically tends towards  $f_r \rightarrow \frac{c}{2\pi R_s}$  when B becomes large compared to  $m_0c^2 / (e\rho)$  which corresponds to  $v \rightarrow c$

## Dispersion Effects in a Synchrotron



p=particle momentum

R=synchrotron physical radius

$f_r$ =revolution frequency

A particle with a momentum deviation will have a

- dispersion orbit and a **different orbit length**
- a **different velocity**.

As a result of both effects the **revolution frequency changes** with a "slip factor  $\eta$ ":

$$\eta = \frac{df_r/f_r}{dp/p} \Rightarrow$$

Note: you also find  $\eta$  defined with a minus sign!

Effect from orbit defined by **Momentum compaction factor**:  $\alpha_c = \frac{dL/L}{dp/p}$

Property of the beam optics:  
(derivation next page)

$$\alpha_c = \frac{1}{L} \int_c \frac{D_x(s)}{\rho(s)} ds_0$$

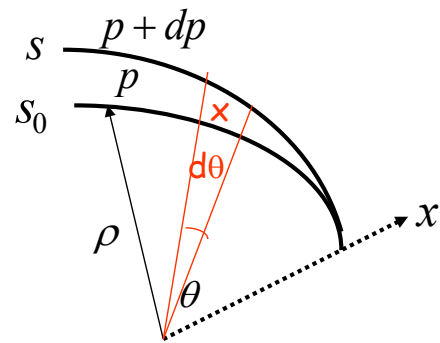


## Derivation: Momentum Compaction Factor

$$\alpha_c = \frac{p}{L} \frac{dL}{dp}$$

$$ds_0 = \rho d\theta$$

$$ds = (\rho + x) d\theta$$



The elementary path difference

from the two orbits is:

definition of dispersion  $D_x$

$$\frac{dl}{ds_0} = \frac{ds - ds_0}{ds_0} = \frac{x}{\rho} = \frac{D_x}{\rho} \frac{dp}{p}$$

leading to the total change in the circumference:

$$dL = \int_C dl = \int_C \frac{x}{\rho} ds_0 = \int_C \frac{D_x}{\rho} \frac{dp}{p} ds_0$$

$$\alpha_c = \frac{1}{L} \int_C \frac{D_x(s)}{\rho(s)} ds_0$$

With  $p = \infty$  in  
straight sections  
we get:

$$\alpha_c = \frac{\langle D_x \rangle_m}{R}$$

$\langle \rangle_m$  means that  
the average is  
considered over  
the bending  
magnet only

## Dispersion Effects - Revolution Frequency

The **two effects** of the **orbit length** and the particle **velocity** change the revolution frequency as:

$$f_r = \frac{\beta c}{2\pi R} \Rightarrow \frac{df_r}{f_r} = \frac{d\beta}{\beta} - \frac{dR}{R} \underset{\substack{\uparrow \\ \text{definition of momentum} \\ \text{compaction factor}}}{=} \frac{d\beta}{\beta} - \alpha_c \frac{dp}{p}$$

$$\frac{df_r}{f_r} = \left( \frac{1}{\gamma^2} - \alpha_c \right) \frac{dp}{p}$$

$$p = mv = \beta \gamma \frac{E_0}{c} \Rightarrow \frac{dp}{p} = \frac{d\beta}{\beta} + \frac{d(1-\beta^2)^{-1/2}}{(1-\beta^2)^{-1/2}} = \underbrace{(1-\beta^2)^{-1}}_{\gamma^2} \frac{d\beta}{\beta}$$

Slip factor:  $\eta = \frac{1}{\gamma^2} - \alpha_c$  or  $\eta = \frac{1}{\gamma^2} - \frac{1}{\gamma_t^2}$  with  $\gamma_t = \frac{1}{\sqrt{\alpha_c}}$

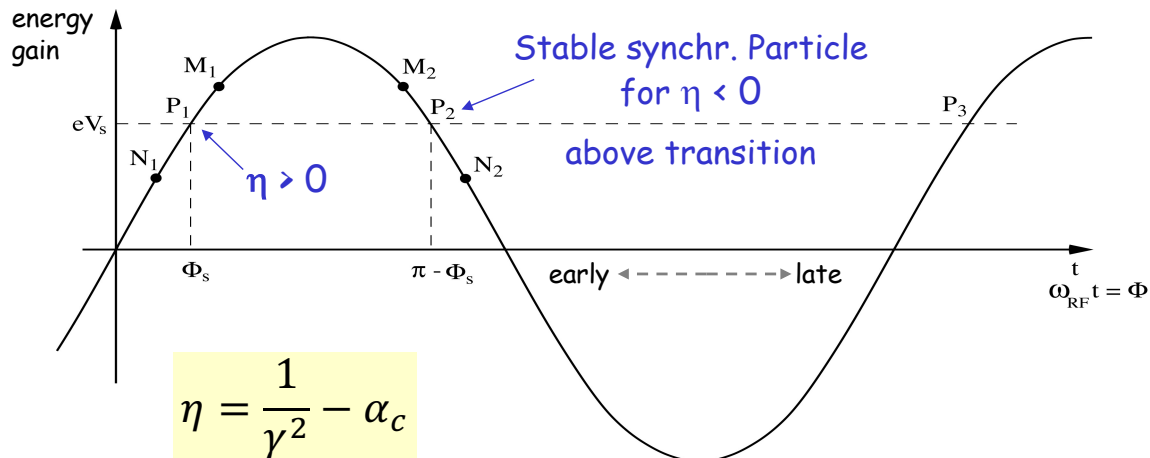
At **transition energy**,  $\eta = 0$ , the velocity change and the path length change with momentum compensate each other. So the revolution frequency there is independent from the momentum deviation.



## Phase Stability in a Synchrotron

From the definition of  $\eta$  it is clear that an **increase in momentum** gives

- **below transition** ( $\eta > 0$ ) a **higher revolution frequency** (increase in velocity dominates) while
- **above transition** ( $\eta < 0$ ) a **lower revolution frequency** ( $v \approx c$  and longer path) where the momentum compaction (generally  $> 0$ ) dominates.



Advanced CAS, Egham, September 2017

49

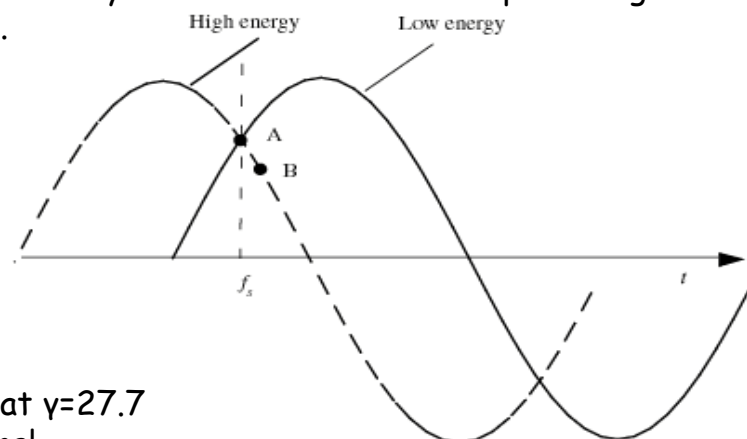
## Crossing Transition

At **transition**, the velocity change and the path length change with momentum compensate each other. So the revolution frequency there is independent from the momentum deviation.

Crossing transition during acceleration makes the previous stable synchronous phase unstable. The RF system needs to make a rapid change of the RF phase, a '**phase jump**'.

$$\alpha_c \sim \frac{1}{Q_x^2}$$

$$\gamma_t = \frac{1}{\sqrt{\alpha_c}} \sim Q_x$$



In the PS:  $\gamma_t$  is at  $\sim 6$  GeV

In the SPS:  $\gamma_t = 22.8$ , injection at  $\gamma = 27.7$

=> no transition crossing!

In the LHC:  $\gamma_t$  is at  $\sim 55$  GeV, also far below injection energy

Transition crossing not needed in leptons machines, why?

Advanced CAS, Egham, September 2017

50

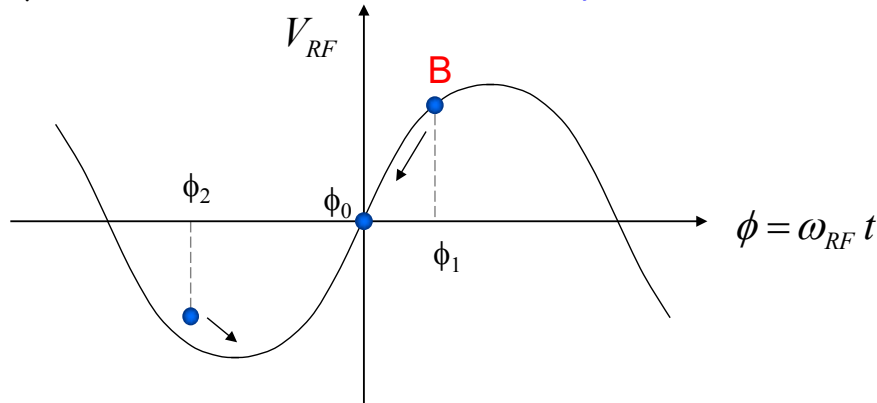
## Dynamics: Synchrotron oscillations

Simple case (no accel.):  $B = \text{const.}$ , below transition  $\gamma < \gamma_{tr}$

The phase of the synchronous particle must therefore be  $\phi_0 = 0$ .

$\phi_1$

- The particle **B** is accelerated
- Below transition, an increase in energy means an increase in revolution frequency
- The particle arrives earlier - tends toward  $\phi_0$



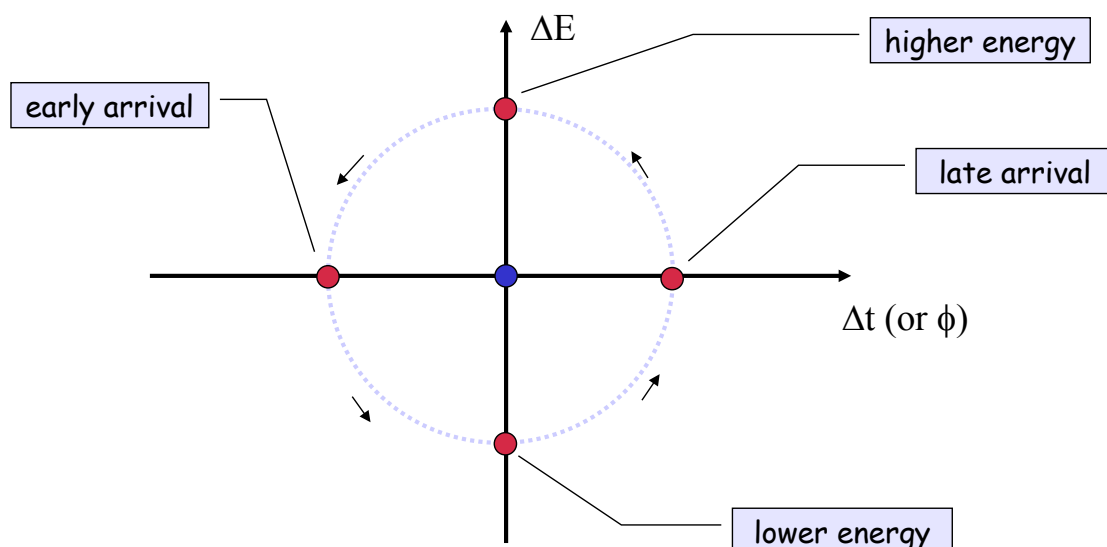
$\phi_2$

- The particle is decelerated
- decrease in energy - decrease in revolution frequency
- The particle arrives later - tends toward  $\phi_0$

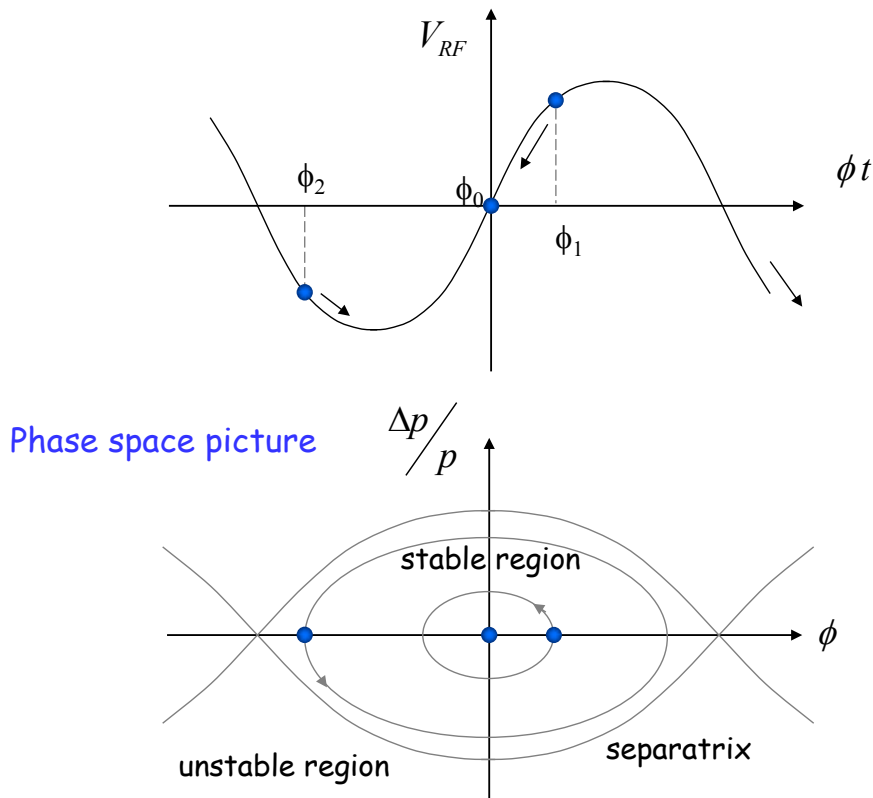
## Longitudinal Phase Space Motion

Particle **B** performs a **synchrotron oscillation** around the synchronous particle **A**

Plotting this motion in longitudinal phase space gives:



## Synchrotron oscillations - No acceleration



Advanced CAS, Egham, September 2017

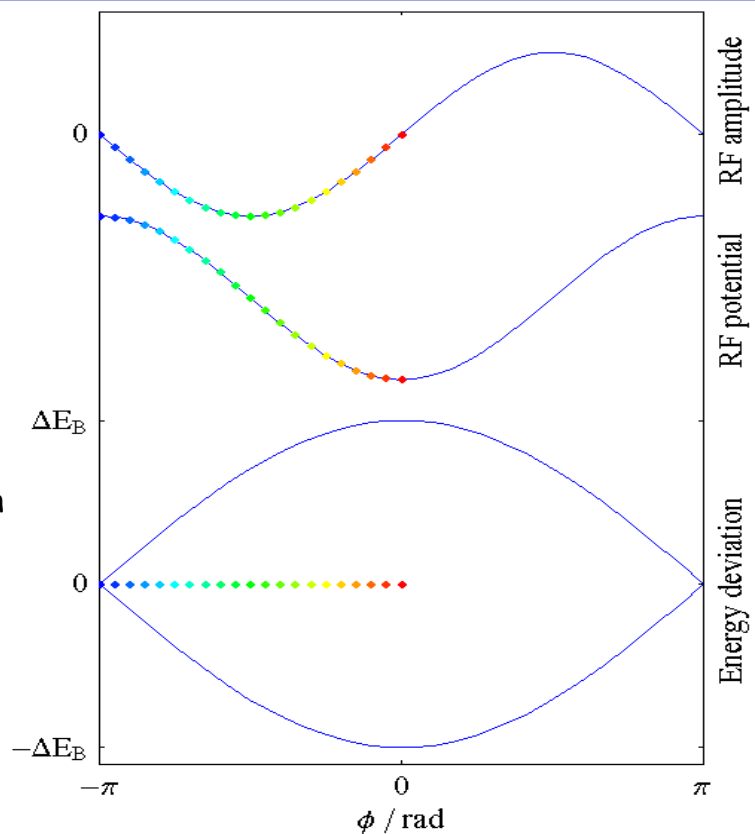
53

## Synchrotron motion in phase space

Remark:  
Synchrotron frequency  
**much smaller** than  
betatron frequency.

The restoring **force** is  
**non-linear**.  
⇒ speed of motion  
depends on position in  
phase-space

(here shown for a  
stationary bucket)

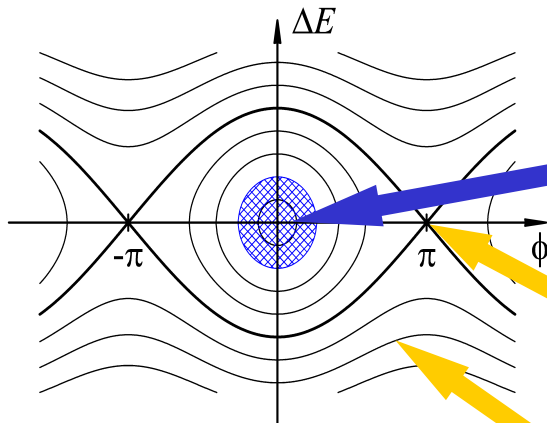


Advanced CAS, Egham, September 2017

54

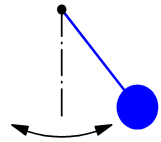
## Synchrotron motion in phase space

$\Delta E$ - $\phi$  phase space of a **stationary bucket**  
(when there is **no acceleration**)



**Dynamics of a particle**  
Non-linear, conservative  
oscillator → e.g. pendulum

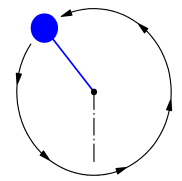
Particle inside  
the separatrix:



Particle at the  
unstable fix-point



Particle outside  
the separatrix:



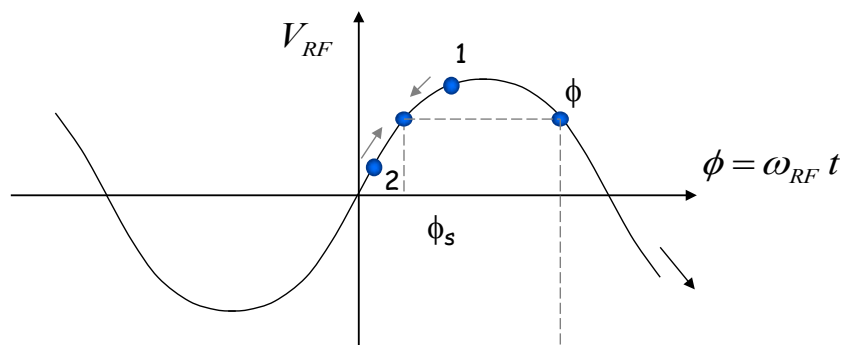
**Bucket area:**  
area enclosed by the separatrix  
⇒ **longitudinal Acceptance** [eVs]

The area covered by particles is  
the **longitudinal emittance**.

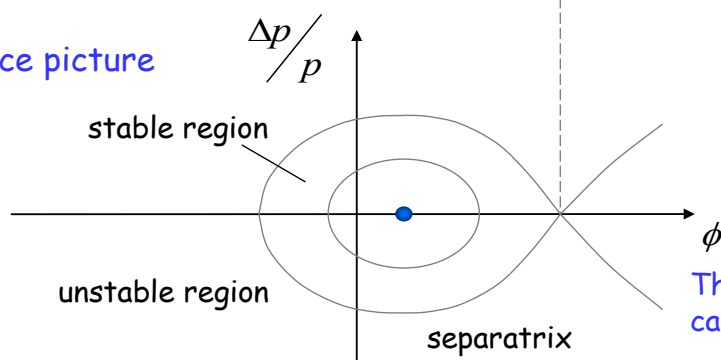
## Synchrotron oscillations (with acceleration)

Case with acceleration  $B$  increasing

$$\gamma < \gamma_{tr}$$



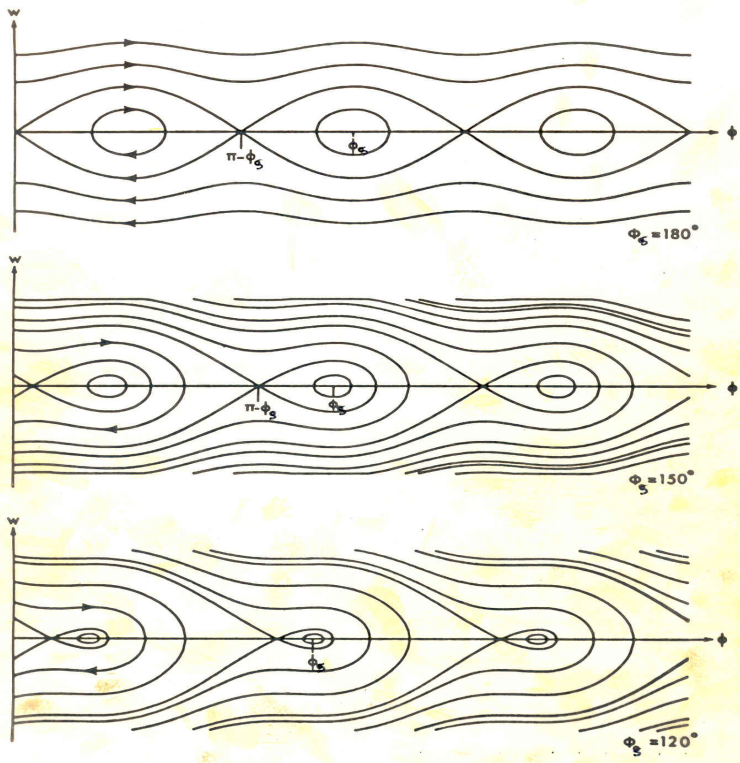
Phase space picture



$$\phi_s < \phi < \pi - \phi_s$$

The symmetry of the  
case  $B = \text{const.}$  is lost

## RF Acceptance versus Synchronous Phase



The **areas of stable motion** (closed trajectories) are called "**BUCKET**". The number of circulating buckets is equal to "**h**".

The phase extension of the **bucket is maximum** for  $\phi_s = 180^\circ$  (or  $0^\circ$ ) which means **no acceleration**.

During **acceleration**, the buckets get **smaller**, both in length and **energy acceptance**.

=> **Injection** preferably **without acceleration**.

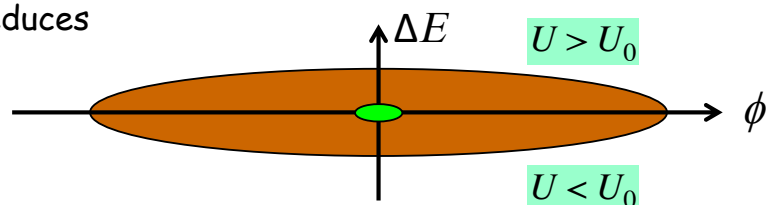
## Longitudinal Motion with Synchrotron Radiation

**Synchrotron radiation** energy-loss **energy dependant**:

$$U_0 = \frac{4}{3} \pi \frac{r_e}{(m_0 c^2)^3} \frac{E^4}{\rho}$$

During one period of synchrotron oscillation:

- when the particle is in the upper half-plane, it loses more energy per turn, its energy gradually reduces



- when the particle is in the lower half-plane, it loses less energy per turn, but receives  $U_0$  on the average, so its energy deviation gradually reduces

The phase space trajectory spirals towards the origin (limited by quantum excitations)

=> The **synchrotron motion** is **damped** toward an **equilibrium bunch length** and **energy spread**.

$$\sigma_\tau = \frac{\alpha}{\Omega_s} \left( \frac{\sigma_E}{E} \right)$$

More details in *Andy Wolski's* lectures on 'Low Emittance Machines'

## Longitudinal Dynamics in Synchrotrons

Now we will look more quantitatively at the "synchrotron motion".

The RF acceleration process clearly emphasizes two coupled variables, the **energy** gained by the particle and the **RF phase** experienced by the same particle.

Since there is a **well defined synchronous particle** which has always the same **phase  $\phi_s$** , and the nominal **energy  $E_s$** , it is sufficient to follow other particles with respect to that particle.

So let's introduce the following reduced variables:

revolution frequency :	$\Delta f_r = f_r - f_{rs}$
particle RF phase :	$\Delta\phi = \phi - \phi_s$
particle momentum :	$\Delta p = p - p_s$
particle energy :	$\Delta E = E - E_s$
azimuth angle :	$\Delta\theta = \theta - \theta_s$

## Equations of Longitudinal Motion

In these reduced variables, the **equations of motion** are (see Appendix):

$$\frac{\Delta E}{\omega_{rs}} = -\frac{p_s R_s}{h \eta \omega_{rs}} \frac{d(\Delta\phi)}{dt} = -\frac{p_s R_s}{h \eta \omega_{rs}} \dot{\phi}$$

$$2\pi \frac{d}{dt} \left( \frac{\Delta E}{\omega_{rs}} \right) = e \hat{V} (\sin\phi - \sin\phi_s)$$

deriving and combining

$$\frac{d}{dt} \left[ \frac{R_s p_s}{h \eta \omega_{rs}} \frac{d\phi}{dt} \right] + \frac{e \hat{V}}{2\pi} (\sin\phi - \sin\phi_s) = 0$$

This second order equation is non linear. Moreover the parameters within the bracket are in general slowly varying with time.

We will simplify in the following...



## Small Amplitude Oscillations

Let's assume constant parameters  $R_s$ ,  $p_s$ ,  $\omega_s$  and  $\eta$ :

$$\ddot{\phi} + \frac{\Omega_s^2}{\cos\phi_s} (\sin\phi - \sin\phi_s) = 0 \quad \text{with} \quad \Omega_s^2 = \frac{h\eta\omega_{rs}e\hat{V}\cos\phi_s}{2\pi R_s p_s}$$

Consider now **small phase deviations** from the reference particle:

$$\sin\phi - \sin\phi_s = \sin(\phi_s + \Delta\phi) - \sin\phi_s \cong \cos\phi_s \Delta\phi \quad (\text{for small } \Delta\phi)$$

and the corresponding linearized motion reduces to a **harmonic oscillation**:

$$\ddot{\phi} + \Omega_s^2 \Delta\phi = 0 \quad \text{where } \Omega_s \text{ is the } \textbf{synchrotron angular frequency}.$$

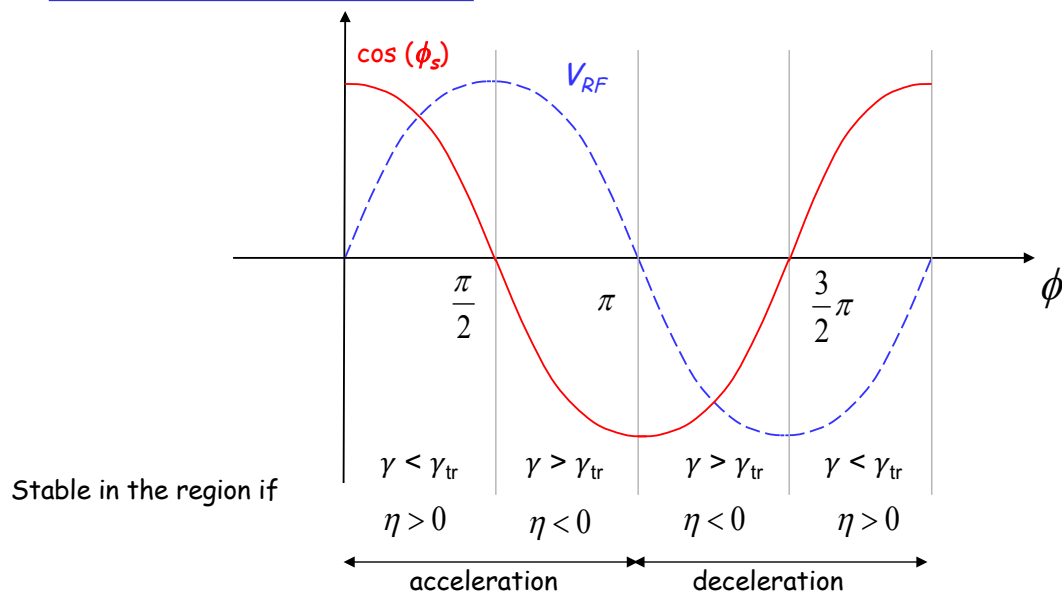
The **synchrotron tune**  $\nu_s$  is the number of synchrotron oscillations per revolution:

$$\nu_s = \Omega_s / \omega_r$$

## Stability condition for $\phi_s$

Stability is obtained when  $\Omega_s$  is real and so  $\Omega_s^2$  positive:

$$\Omega_s^2 = \frac{e\hat{V}_{RF}\eta h\omega_s}{2\pi R_s p_s} \cos\phi_s \Rightarrow \Omega_s^2 > 0 \Leftrightarrow \eta \cos\phi_s > 0$$



## Large Amplitude Oscillations

For larger phase (or energy) deviations from the reference the second order differential equation is non-linear:

$$\ddot{\phi} + \frac{\Omega_s^2}{\cos \phi_s} (\sin \phi - \sin \phi_s) = 0 \quad (\Omega_s \text{ as previously defined})$$

Multiplying by  $\dot{\phi}$  and integrating gives an invariant of the motion:

$$\frac{\dot{\phi}^2}{2} - \frac{\Omega_s^2}{\cos \phi_s} (\cos \phi + \phi \sin \phi_s) = I$$

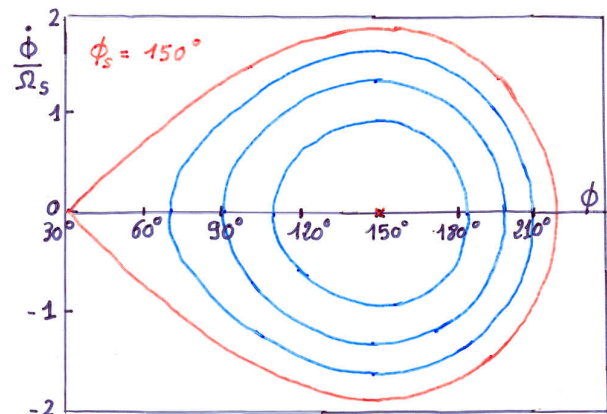
which for small amplitudes reduces to:

$$\frac{\dot{\phi}^2}{2} + \Omega_s^2 \frac{(\Delta\phi)^2}{2} = I' \quad (\text{the variable is } \Delta\phi, \text{ and } \phi_s \text{ is constant})$$

Similar equations exist for the second variable :  $\Delta E \propto d\phi/dt$

## Large Amplitude Oscillations (2)

When  $\phi$  reaches  $\pi - \phi_s$  the force goes to zero and beyond it becomes non restoring.  
Hence  $\pi - \phi_s$  is an extreme amplitude for a stable motion which in the phase space ( $\frac{\dot{\phi}}{\Omega_s}, \Delta\phi$ ) is shown as closed trajectories.



Equation of the **separatrix**:

$$\frac{\dot{\phi}^2}{2} - \frac{\Omega_s^2}{\cos \phi_s} (\cos \phi + \phi \sin \phi_s) = -\frac{\Omega_s^2}{\cos \phi_s} (\cos(\pi - \phi_s) + (\pi - \phi_s) \sin \phi_s)$$

Second value  $\phi_m$  where the separatrix crosses the horizontal axis:

$$\cos \phi_m + \phi_m \sin \phi_s = \cos(\pi - \phi_s) + (\pi - \phi_s) \sin \phi_s$$

## Energy Acceptance

From the equation of motion it is seen that  $\dot{\phi}$  reaches an extreme when  $\ddot{\phi} = 0$ , hence corresponding to  $\phi = \phi_s$ .

Introducing this value into the equation of the separatrix gives:

$$\dot{\phi}_{\max}^2 = 2\Omega_s^2 \left\{ 2 + (2\phi_s - \pi) \tan \phi_s \right\}$$

That translates into an **acceptance in energy**:

$$\left( \frac{\Delta E}{E_s} \right)_{\max} = \mp \beta \sqrt{-\frac{e\hat{V}}{\pi h \eta E_s} G(\phi_s)}$$

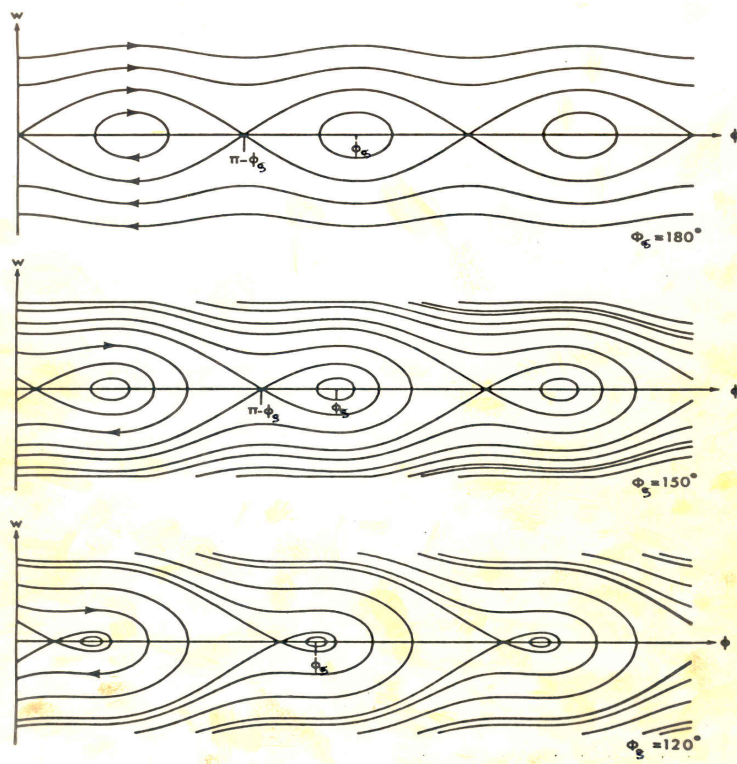
$$G(\phi_s) = [2\cos\phi_s + (2\phi_s - \pi)\sin\phi_s]$$

This "RF acceptance" depends strongly on  $\phi_s$  and plays an important role for the capture at injection, and the stored beam lifetime.

It's **largest** for  $\phi_s=0$  and  $\phi_s=\pi$  (no acceleration, depending on  $\eta$ ).

Need a higher RF voltage for higher acceptance.

## RF Acceptance versus Synchronous Phase



The areas of stable motion (closed trajectories) are called "BUCKET".

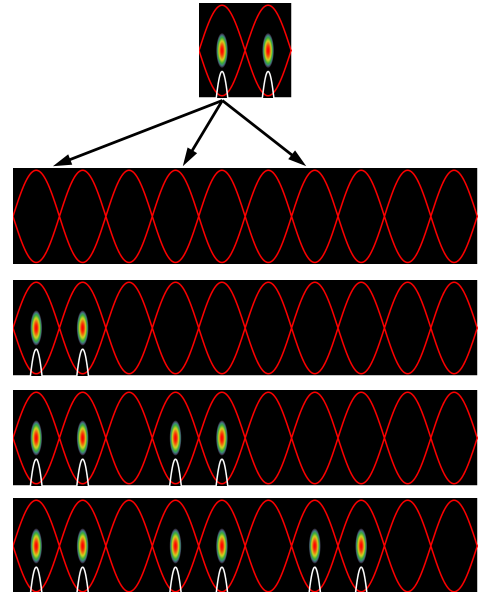
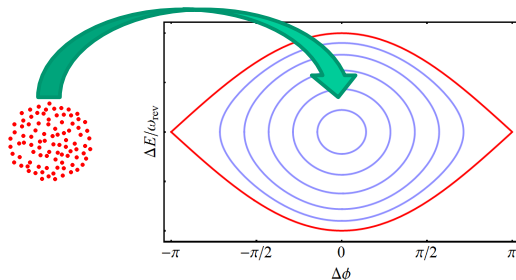
As the synchronous phase gets closer to  $90^\circ$  the buckets get smaller.

The number of circulating buckets is equal to "h".

The phase extension of the bucket is maximum for  $\phi_s = 180^\circ$  (or  $0^\circ$ ) which correspond to no acceleration. The RF acceptance increases with the RF voltage.

## Bunch-to-bucket transfer

- Bunch from sending accelerator into the bucket of receiving



### Advantages:

- Particles always subject to longitudinal focusing
- No need for RF capture of de-bunched beam in receiving accelerator
- No particles at unstable fixed point
- Time structure of beam preserved during transfer

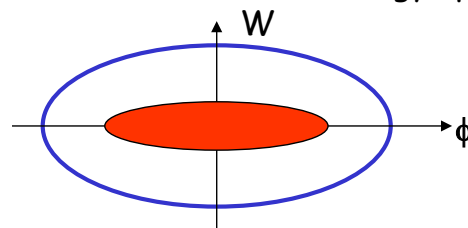
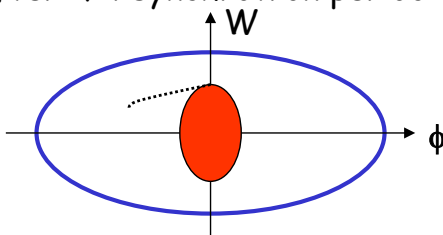
Advanced CAS, Egham, September 2017

67

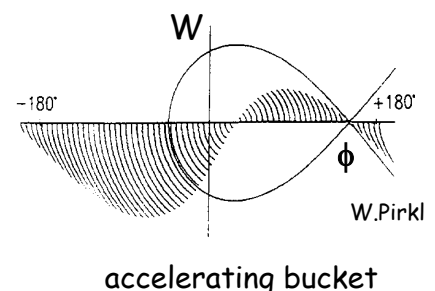
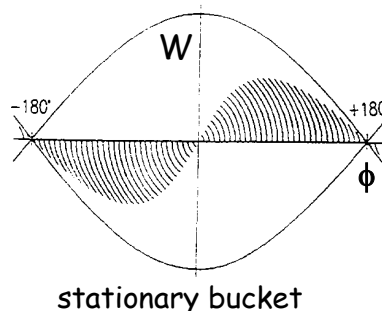
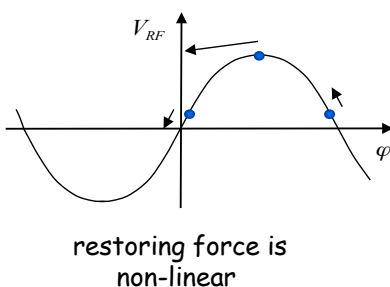
## Bunch Transfer - Effect of a Mismatch

When you **transfer** the bunch from one RF system to another, the shape of the **phase space and the bunch need to match**.

Mismatch example: Injected bunch: short length and large energy spread  
after 1/4 synchrotron period: longer bunch with a smaller energy spread.



For **larger amplitudes**, the angular phase space motion is slower (1/8 period shown below) => can lead to **filamentation** and **emittance growth**



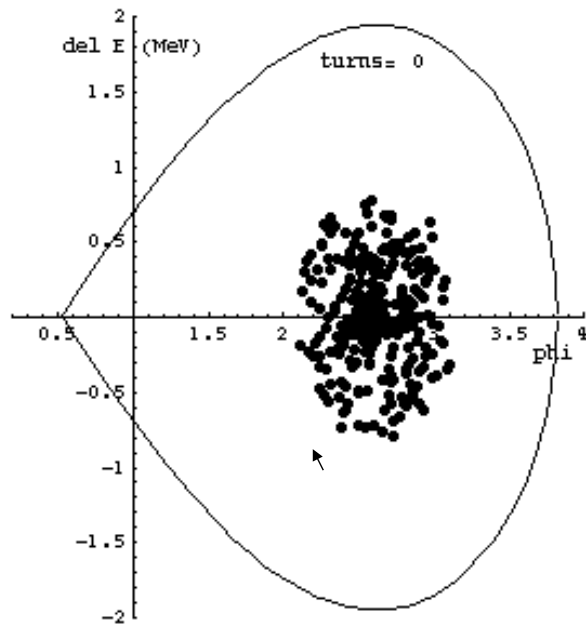
Advanced CAS, Egham, September 2017

68

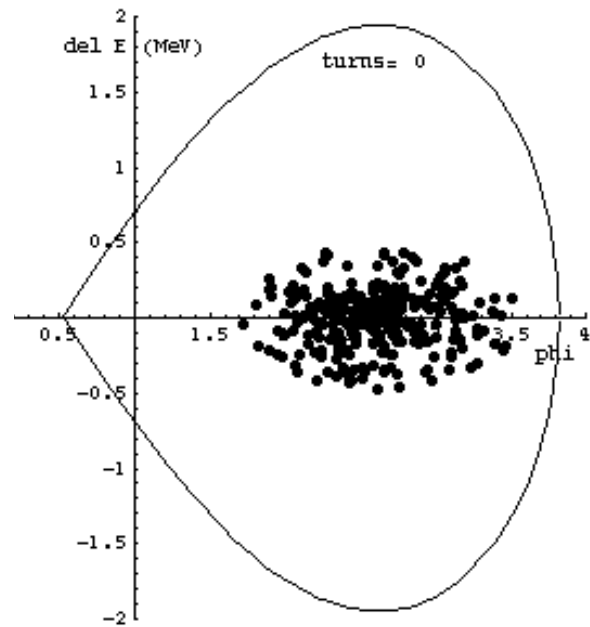
## Effect of a Mismatch (2)

Evolution of an injected beam for the first 100 turns.

For a matched transfer, the emittance does not grow (left).



matched beam

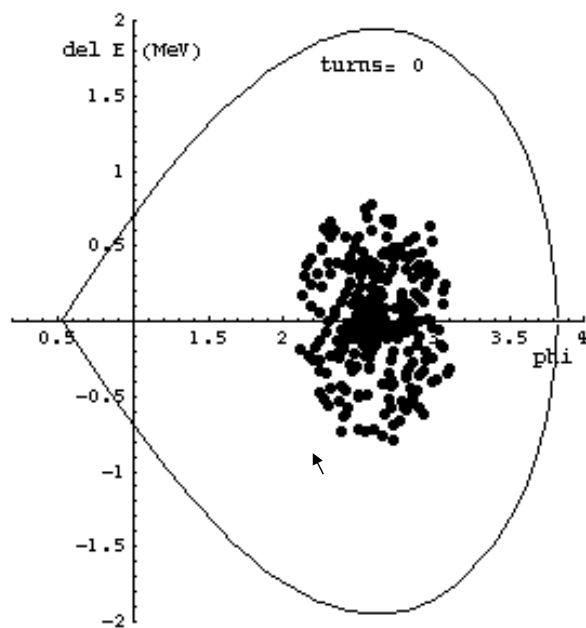


mismatched beam - **bunch length**

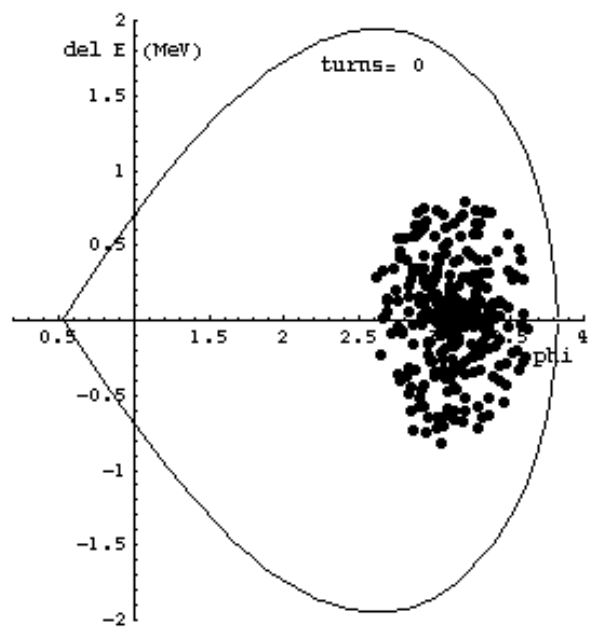
## Effect of a Mismatch (3)

Evolution of an injected beam for the first 100 turns.

For a mismatched transfer, the emittance increases (right).



matched beam

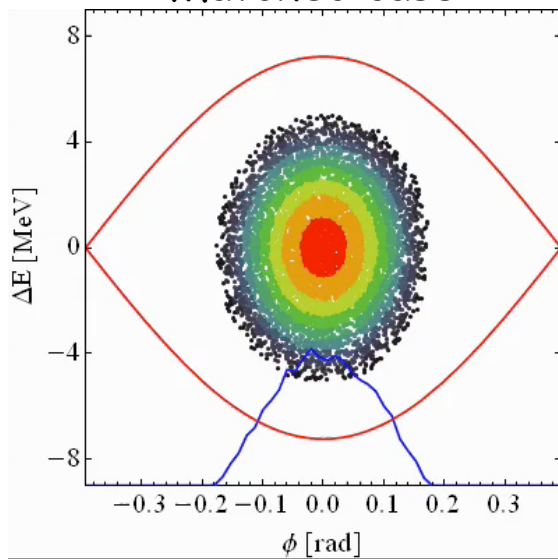


mismatched beam - **phase error**

## Effect of a Mismatch (4)

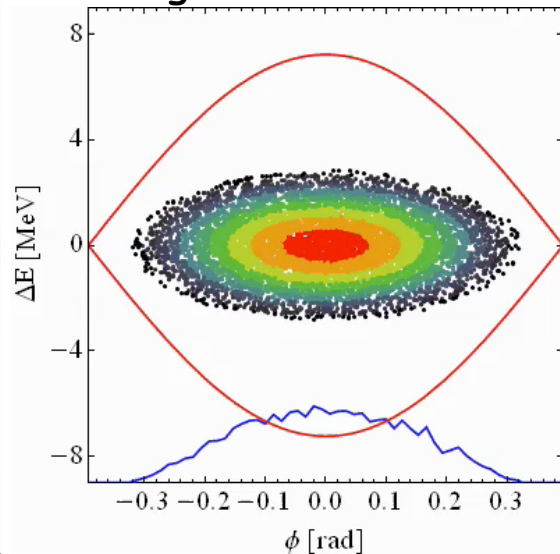
- Long. emittance is only preserved for **correct RF voltage**

Matched case



→ Bunch is fine, longitudinal emittance remains constant

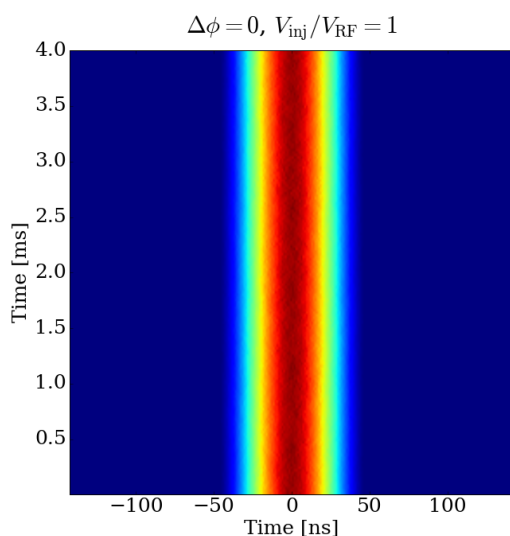
Longitudinal mismatch



→ Dilution of bunch results in increase of long. emittance

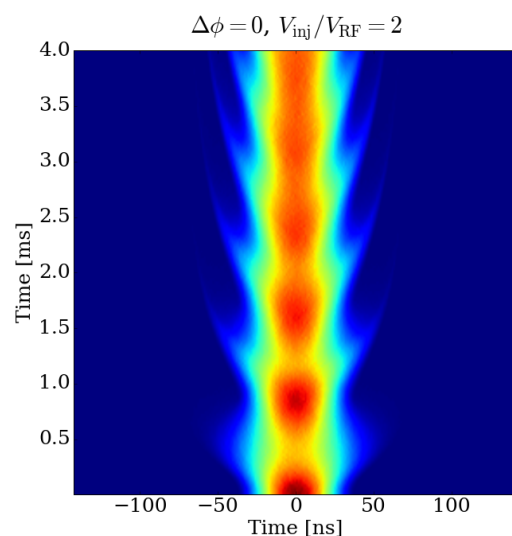
## Longitudinal matching - Beam profile

Matched case



→ Bunch is fine, longitudinal emittance remains constant

Longitudinal mismatch

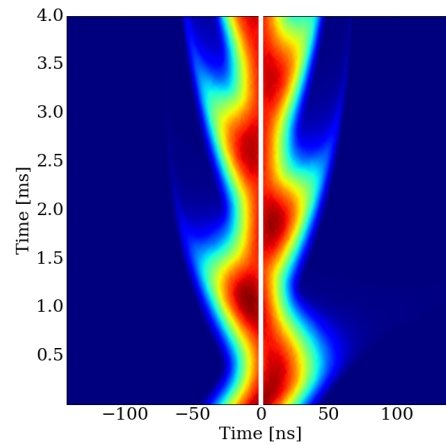
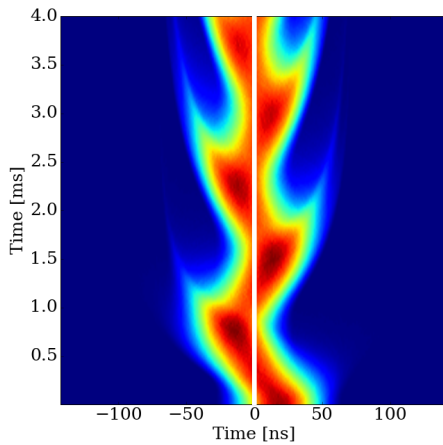


→ Dilution of bunch results in increase of long. emittance



## Matching quiz!

- Find the difference!



- -45° phase error at injection
- Can be easily corrected by bucket phase

- Equivalent energy error
- Phase does not help: requires beam energy change

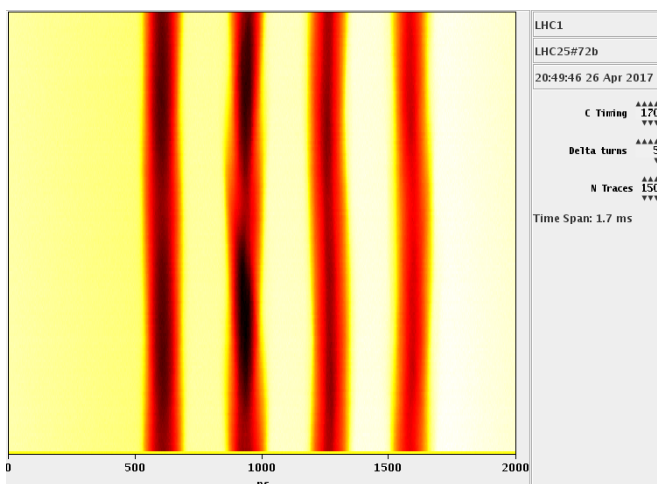
Advanced CAS, Egham, September 2017

73

## Phase Space Tomography

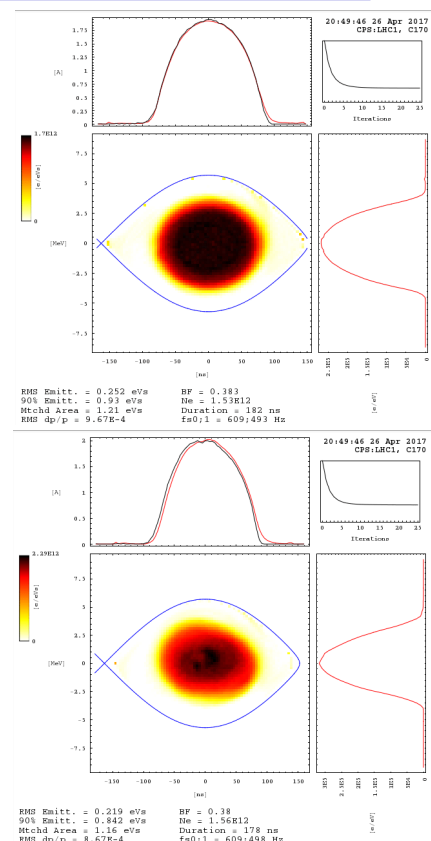
We can reconstruct the phase space distribution of the beam.

- Longitudinal bunch profiles over a number of turns
- Parameters determining  $\Omega_s$



1<sup>st</sup> bunch

2<sup>nd</sup> bunch



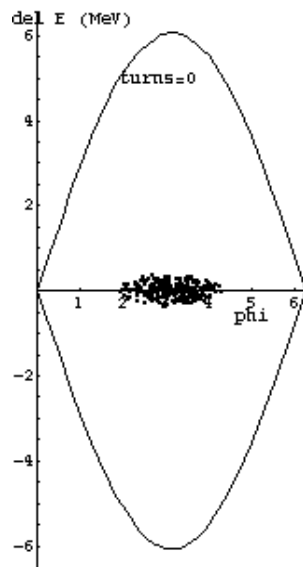
Advanced CAS, Egham, September 2017

74

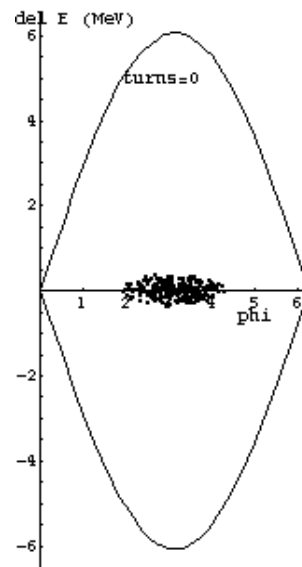
## Bunch Rotation

Phase space motion can be used to make short bunches.

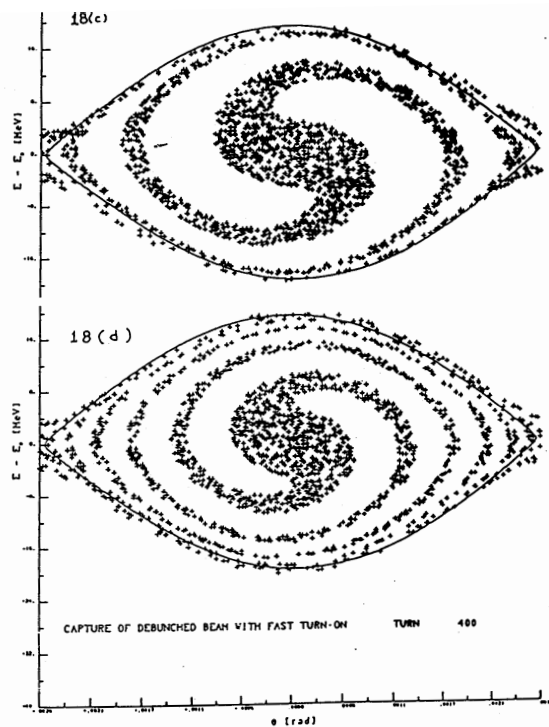
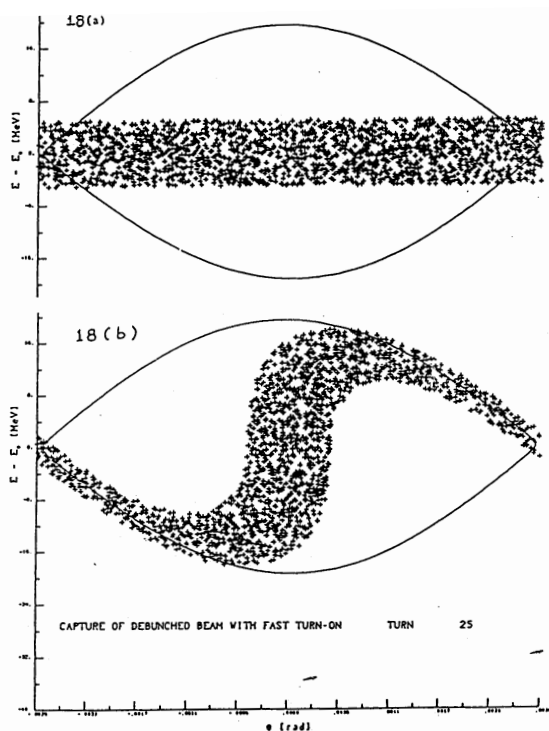
Start with a long bunch and extract or recapture when it's short.



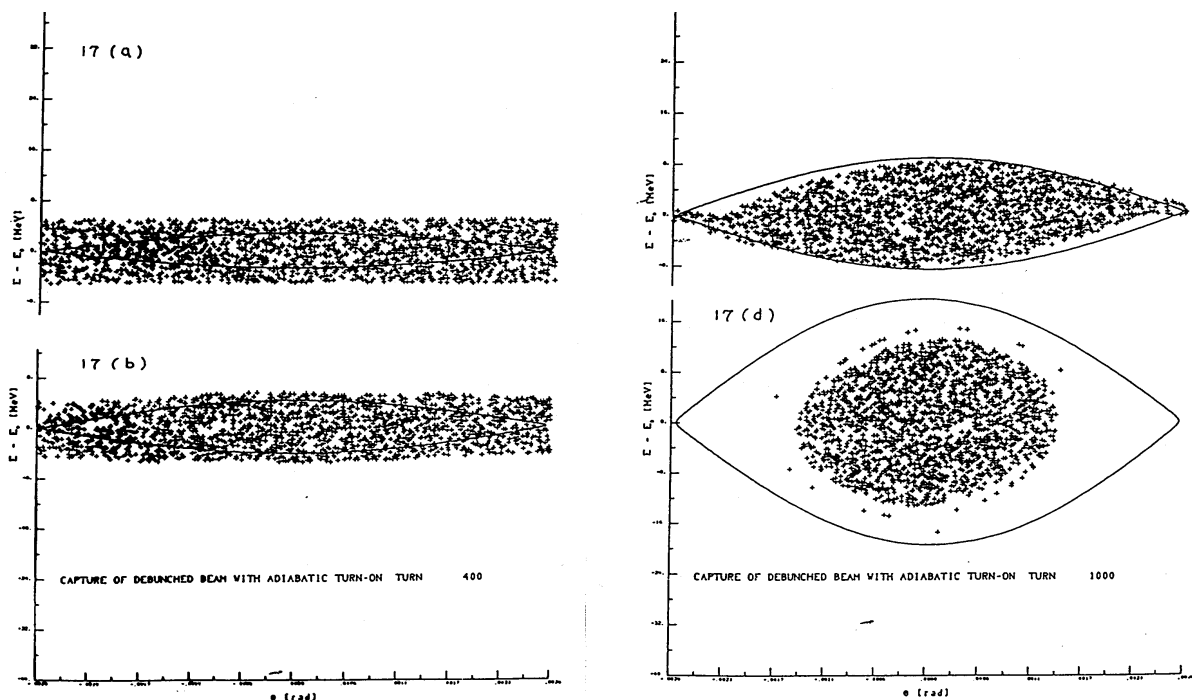
initial beam



## Capture of a Debunched Beam with Fast Turn-On



## Capture of a Debunched Beam with Adiabatic Turn-On



Advanced CAS, Egham, September 2017

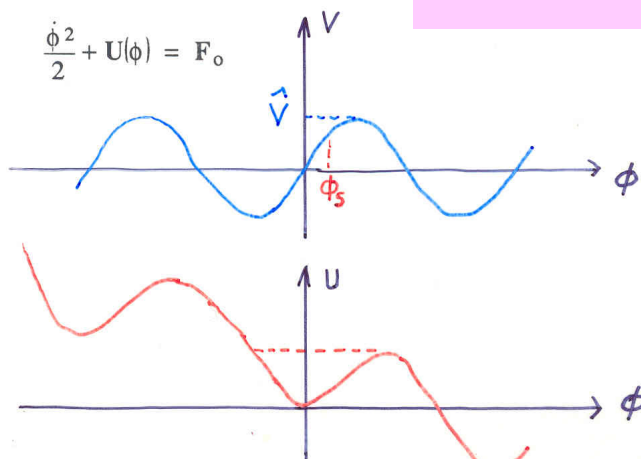
77

## Potential Energy Function

The longitudinal motion is produced by a force that can be derived from a scalar potential:

$$\frac{d^2\phi}{dt^2} = F(\phi) \quad F(\phi) = -\frac{\partial U}{\partial \phi}$$

$$U = -\int_0^\phi F(\phi) d\phi = -\frac{\Omega_s^2}{\cos\phi_s} (\cos\phi + \phi \sin\phi_s) - F_0$$



The sum of the potential energy and kinetic energy is constant and by analogy represents the total energy of a non-dissipative system.

Advanced CAS, Egham, September 2017

78

## Hamiltonian of Longitudinal Motion

Introducing a new convenient variable,  $W$ , leads to the 1<sup>st</sup> order equations:

$$W = \frac{\Delta E}{\omega_{rs}} \quad \longrightarrow \quad \begin{aligned} \frac{d\phi}{dt} &= -\frac{h\eta\omega_{rs}}{pR} W \\ \frac{dW}{dt} &= \frac{e\hat{V}}{2\pi} (\sin \phi - \sin \phi_s) \end{aligned}$$

The two variables  $\phi, W$  are canonical since these equations of motion can be derived from a Hamiltonian  $H(\phi, W, t)$ :

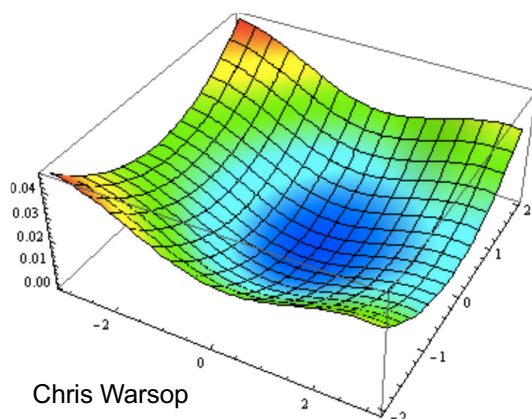
$$\frac{d\phi}{dt} = \frac{\partial H}{\partial W} \qquad \frac{dW}{dt} = -\frac{\partial H}{\partial \phi}$$

$$H(\phi, W) = -\frac{1}{2} \frac{h\eta\omega_{rs}}{pR} W^2 + \frac{e\hat{V}}{2\pi} [\cos \phi - \cos \phi_s + (\phi - \phi_s) \sin \phi_s]$$

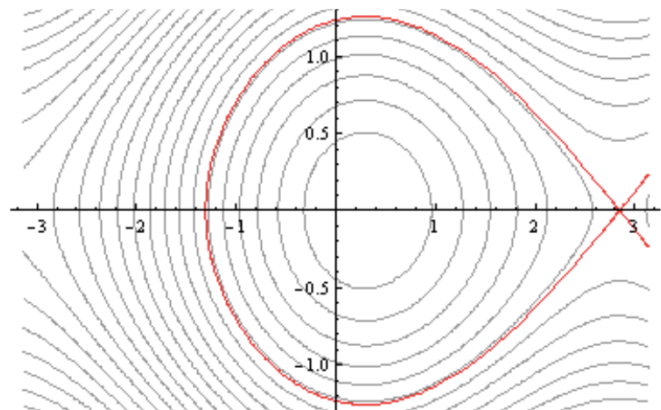
## Hamiltonian of Longitudinal Motion

What does it represent?      The total energy of the system!

Surface of  $H(\phi, W)$



Contours of  $H(\phi, W)$

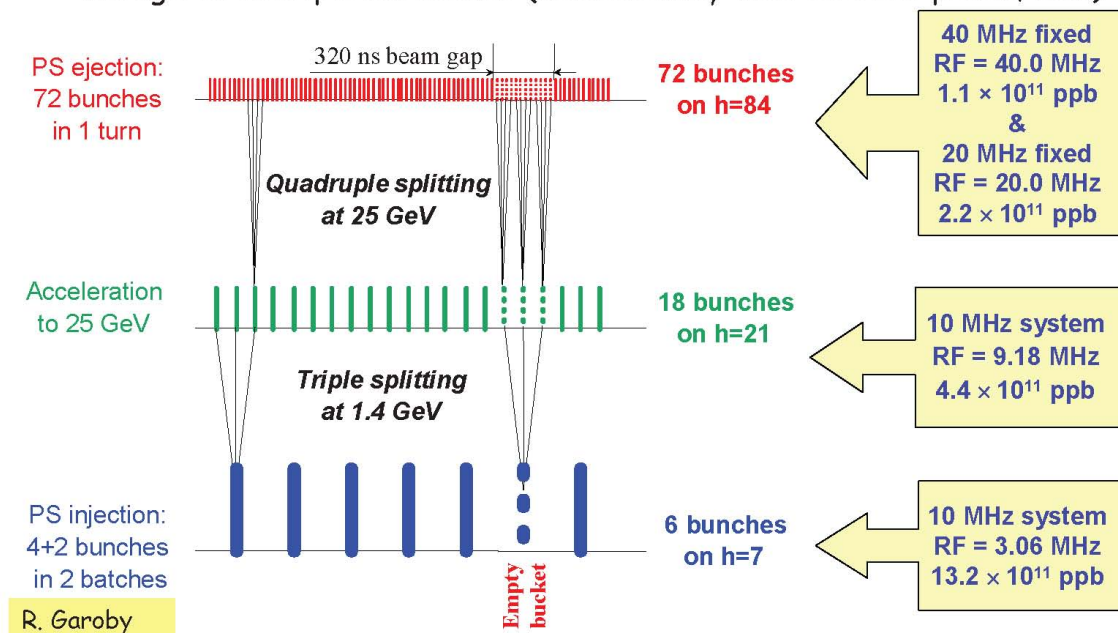


Contours of constant  $H$  are particle trajectories in phase space! ( $H$  is conserved)

Hamiltonian Mechanics can help us understand some fairly complicated dynamics (multiple harmonics, bunch splitting, ...)

## Generating a 25ns LHC Bunch Train in the PS

- **Longitudinal bunch splitting (basic principle)**
  - Reduce voltage on principal RF harmonic and simultaneously rise voltage on multiple harmonics (adiabatically with correct phase, etc.)



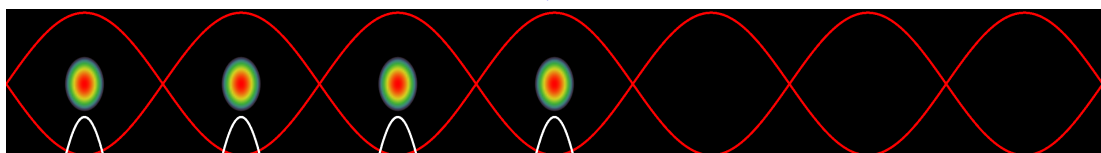
Use double splitting at 25 GeV to generate 50ns bunch trains instead

Advanced CAS, Egham, September 2017

81

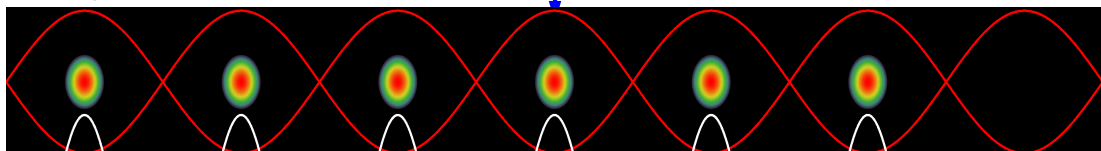
## Production of the LHC 25 ns beam

1. Inject four bunches ~ 180 ns, 1.3 eVs

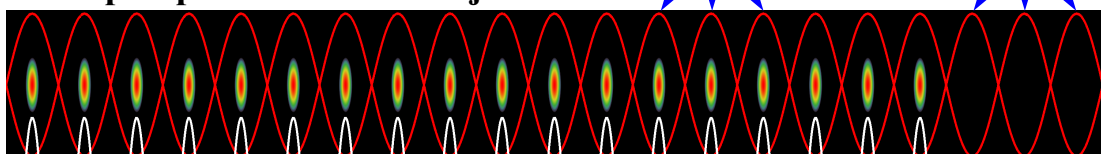


Wait 1.2 s for second injection

2. Inject two bunches



3. Triple split after second injection



~ 0.7 eVs

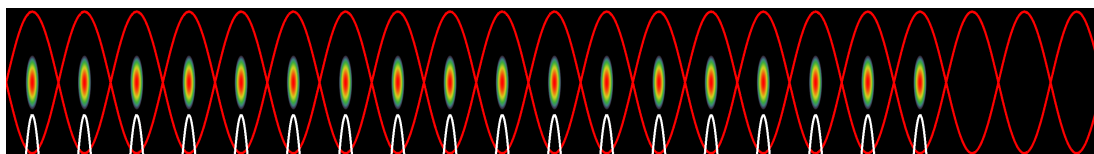
4. Accelerate from 1.4 GeV ( $E_{kin}$ ) to 26 GeV

Advanced CAS, Egham, September 2017

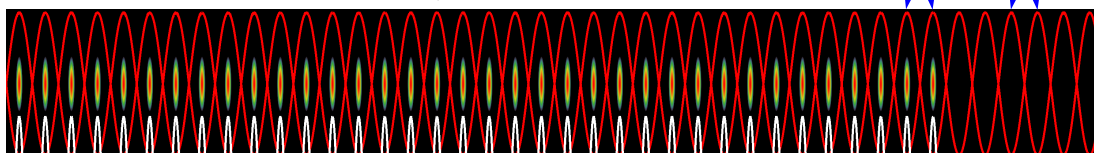
82

## Production of the LHC 25 ns beam

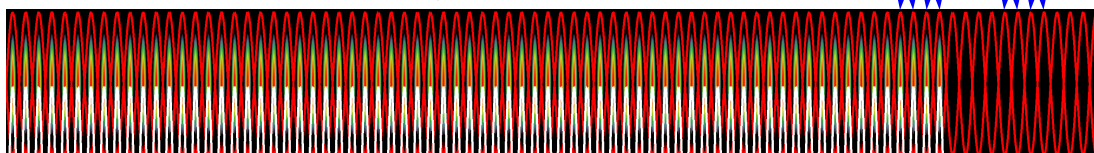
5. During acceleration: longitudinal emittance blow-up: **0.7 – 1.3 eVs**



6. Double split ( $h_{21} \rightarrow h_{42}$ )



7. Double split ( $h_{42} \rightarrow h_{84}$ )  $\sim 0.35$  eVs, 4 ns

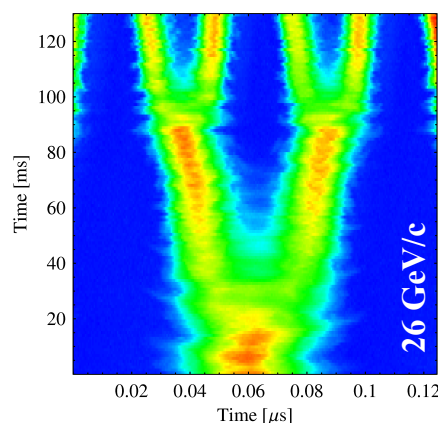
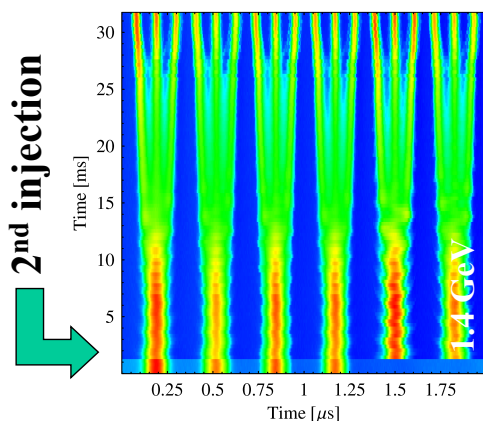
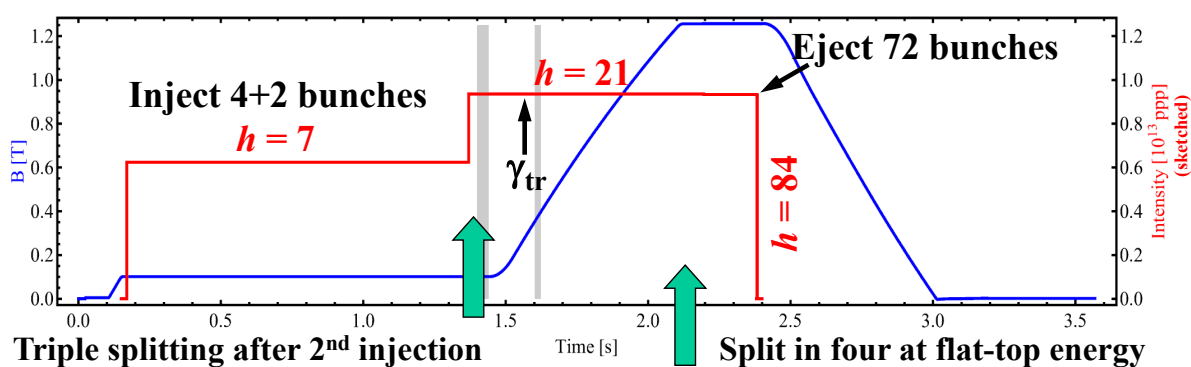


10. Fine synchronization, bunch rotation  $\rightarrow$  Extraction!

Advanced CAS, Egham, September 2017

83

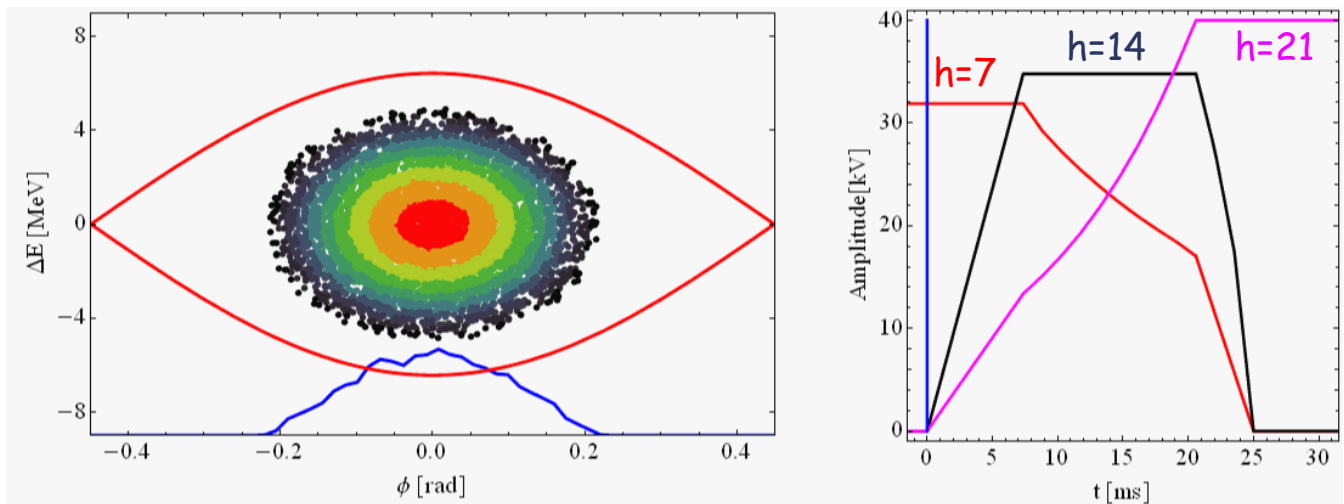
## The LHC25 (ns) cycle in the PS



$\rightarrow$  Each bunch from the Booster divided by **12**  $\rightarrow 6 \times 3 \times 2 \times 2 = 72$

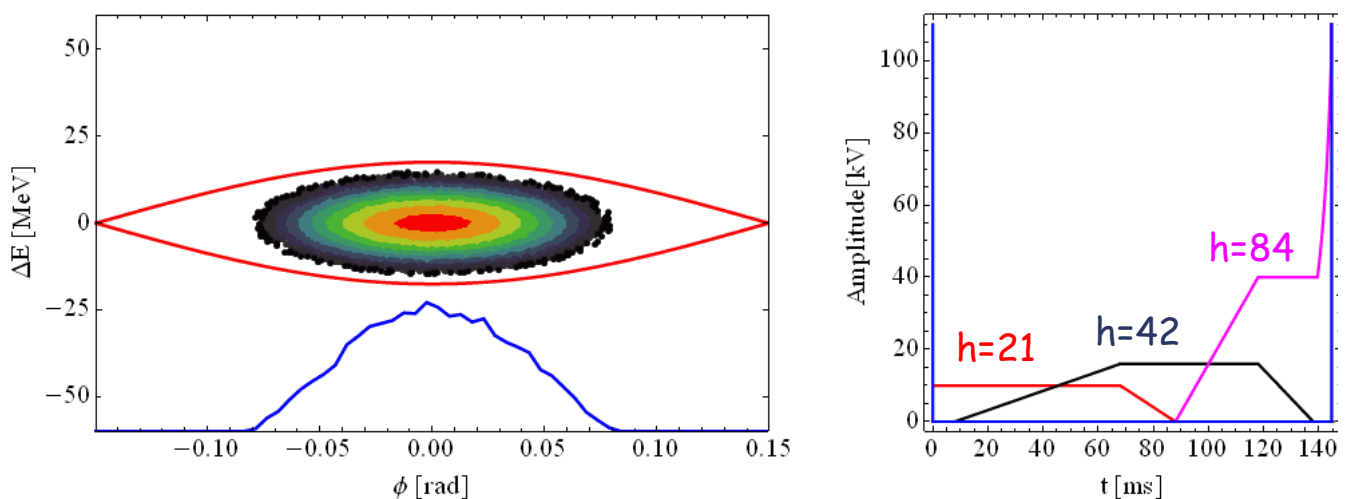


## Triple splitting in the PS



## Two times double splitting in the PS

Two times double splitting and bunch rotation:



- Bunch is divided twice using RF systems at  $h = 21/42$  (10/20 MHz) and  $h = 42/84$  (20/40 MHz)
- Bunch rotation: first part  $h84$  only +  $h168$  (80 MHz) for final part

## Summary

- Cyclotrons/Synchrocyclotrons for low energy
- **Synchrotrons** for high energies  
constant orbit, rising field and frequency
- Particles with higher energy have a longer orbit (normally) but a higher velocity
  - at low energies (below transition) velocity increase dominates
  - at high energies (above transition) velocity almost constant
- Particles perform **oscillations around synchronous phase**
  - synchronous phase depending on acceleration
  - below or above transition
- **bucket** is the region in phase space for stable oscillations
- matching the shape of the bunch to the bucket is important

## Bibliography

- M. Conte, W.W. Mac Kay    **An Introduction to the Physics of particle Accelerators**  
(World Scientific, 1991)
- P. J. Bryant and K. Johnsen    **The Principles of Circular Accelerators and Storage Rings**  
(Cambridge University Press, 1993)
- D. A. Edwards, M. J. Syphers    **An Introduction to the Physics of High Energy Accelerators**  
(J. Wiley & sons, Inc, 1993)
- H. Wiedemann    **Particle Accelerator Physics**  
(Springer-Verlag, Berlin, 1993)
- M. Reiser    **Theory and Design of Charged Particles Beams**  
(J. Wiley & sons, 1994)
- A. Chao, M. Tigner    **Handbook of Accelerator Physics and Engineering**  
(World Scientific 1998)
- K. Wille    **The Physics of Particle Accelerators: An Introduction**  
(Oxford University Press, 2000)
- E.J.N. Wilson    **An introduction to Particle Accelerators**  
(Oxford University Press, 2001)



**And CERN Accelerator Schools (CAS) Proceedings**  
**In particular: CERN-2014-009**  
**Advanced Accelerator Physics - CAS**

## Acknowledgements

I would like to thank everyone for the material that I have used.

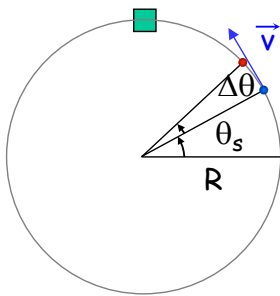
In particular (hope I don't forget anyone):

- Joël Le Duff (from whom I inherited the course)
- Erk Jensen
- Heiko Damerau
- Alessandra Lombardi
- Maurizio Vretenar
- Rende Steerenberg
- Gerald Dugan
- Werner Pirkel
- Genevieve Tulloue
- Mike Syphers
- Daniel Schulte
- Roberto Corsini
- Roland Garoby

Advanced CAS, Egham, September 2017

89

## Appendix: First Energy-Phase Equation



$$f_{RF} = h f_r \Rightarrow \Delta\phi = -h \Delta\theta \quad \text{with} \quad \theta = \int \omega \, dt$$

particle ahead arrives earlier  
=> smaller RF phase

For a given particle with respect to the reference one:

$$\Delta\omega = \frac{d}{dt}(\Delta\theta) = -\frac{1}{h} \frac{d}{dt}(\Delta\phi) = -\frac{1}{h} \frac{d\phi}{dt}$$

Since:  $\eta = \frac{p_s}{\omega_{rs}} \left( \frac{d\omega}{dp} \right)_s$  and

$$E^2 = E_0^2 + p^2 c^2$$

$$\Delta E = v_s \Delta p = \omega_{rs} R_s \Delta p$$

one gets:

$$\frac{\Delta E}{\omega_{rs}} = -\frac{p_s R_s}{h \eta \omega_{rs}} \frac{d(\Delta\phi)}{dt} = -\frac{p_s R_s}{h \eta \omega_{rs}} \dot{\phi}$$

Advanced CAS, Egham, September 2017

90

## Appendix: Second Energy-Phase Equation

The rate of energy gained by a particle is:  $\frac{dE}{dt} = e\hat{V}\sin\phi \frac{\omega_r}{2\pi}$

The rate of relative energy gain with respect to the reference particle is then:

$$2\pi\Delta\left(\frac{\dot{E}}{\omega_r}\right) = e\hat{V}(\sin\phi - \sin\phi_s)$$

Expanding the left-hand side to first order:

$$\Delta(\dot{E}T_r) \cong \dot{E}\Delta T_r + T_{rs}\Delta\dot{E} = \Delta E\dot{T}_r + T_{rs}\Delta\dot{E} = \frac{d}{dt}(T_{rs}\Delta E)$$

leads to the second energy-phase equation:

$$2\pi\frac{d}{dt}\left(\frac{\Delta E}{\omega_{rs}}\right) = e\hat{V}(\sin\phi - \sin\phi_s)$$

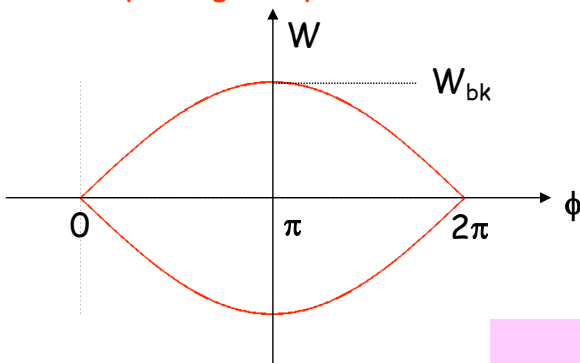
## Appendix: Stationary Bucket - Separatrix

This is the case  $\sin\phi_s=0$  (no acceleration) which means  $\phi_s=0$  or  $\pi$ . The equation of the separatrix for  $\phi_s=\pi$  (above transition) becomes:

$$\frac{\dot{\phi}^2}{2} + \Omega_s^2 \cos\phi = \Omega_s^2$$

$$\frac{\dot{\phi}^2}{2} = 2\Omega_s^2 \sin^2\frac{\phi}{2}$$

Replacing the phase derivative by the (canonical) variable W:



with  $C=2\pi R_s$

$$W = \frac{\Delta E}{\omega_{rf}} = -\frac{p_s R_s}{h\eta\omega_{rf}} \dot{\phi}$$

and introducing the expression for  $\Omega_s$  leads to the following equation for the separatrix:

$$W = \pm \frac{C}{\pi h c} \sqrt{\frac{-e\hat{V}E_s}{2\pi h\eta}} \sin\frac{\phi}{2} = \pm W_{bk} \sin\frac{\phi}{2}$$

## Stationary Bucket (2)

Setting  $\phi=\pi$  in the previous equation gives the height of the bucket:

$$W_{bk} = \frac{C}{\pi h c} \sqrt{\frac{-e \hat{V} E_s}{2 \pi h \eta}}$$

This results in the **maximum energy acceptance**:

$$\Delta E_{\max} = \omega_{rf} W_{bk} = \beta_s \sqrt{2 \frac{-e \hat{V}_{RF} E_s}{\pi h}}$$

The area of the bucket is:  $A_{bk} = 2 \int_0^{2\pi} W d\phi$

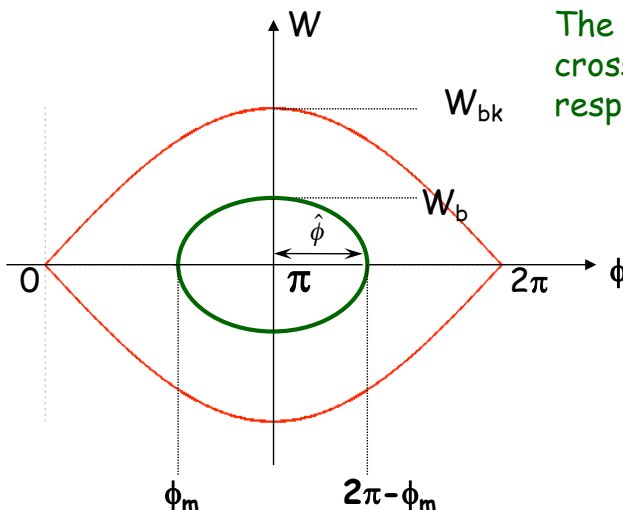
Since:  $\int_0^{2\pi} \sin \frac{\phi}{2} d\phi = 4$

one gets:  $A_{bk} = 8 W_{bk} = 8 \frac{C}{\pi h c} \sqrt{\frac{-e \hat{V} E_s}{2 \pi h \eta}} \longrightarrow W_{bk} = \frac{A_{bk}}{8}$

## Bunch Matching into a Stationary Bucket

A particle trajectory inside the separatrix is described by the equation:

$$\frac{\dot{\phi}^2}{2} - \frac{\Omega_s^2}{\cos \phi_s} (\cos \phi + \phi \sin \phi_s) = I \xrightarrow{\phi_s = \pi} \frac{\dot{\phi}^2}{2} + \Omega_s^2 \cos \phi = I$$



The points where the trajectory crosses the axis are symmetric with respect to  $\phi_s = \pi$

$$\frac{\dot{\phi}^2}{2} + \Omega_s^2 \cos \phi = \Omega_s^2 \cos \phi_m$$

$$\dot{\phi} = \pm \Omega_s \sqrt{2(\cos \phi_m - \cos \phi)}$$

$$W = \pm W_{bk} \sqrt{\cos^2 \frac{\phi_m}{2} - \cos^2 \frac{\phi}{2}}$$

$$\cos(\phi) = 2 \cos^2 \frac{\phi}{2} - 1$$

## Bunch Matching into a Stationary Bucket (2)

Setting  $\phi = \pi$  in the previous formula allows to calculate the bunch height:

$$W_b = W_{bk} \cos \frac{\phi_m}{2} = W_{bk} \sin \frac{\hat{\phi}}{2} \quad \text{or:} \quad W_b = \frac{A_{bk}}{8} \cos \frac{\phi_m}{2}$$

$$\longrightarrow \left( \frac{\Delta E}{E_s} \right)_b = \left( \frac{\Delta E}{E_s} \right)_{RF} \cos \frac{\phi_m}{2} = \left( \frac{\Delta E}{E_s} \right)_{RF} \sin \frac{\hat{\phi}}{2}$$

This formula shows that for a given bunch energy spread the proper matching of a **shorter bunch** ( $\phi_m$  close to  $\pi$ ,  $\hat{\phi}$  small) will **require** a bigger RF acceptance, hence a **higher voltage**

For small oscillation amplitudes the equation of the ellipse reduces to:

$$W = \frac{A_{bk}}{16} \sqrt{\hat{\phi}^2 - (\Delta\phi)^2} \longrightarrow \left( \frac{16W}{A_{bk}\hat{\phi}} \right)^2 + \left( \frac{\Delta\phi}{\hat{\phi}} \right)^2 = 1$$

Ellipse area is called longitudinal emittance

$$A_b = \frac{\pi}{16} A_{bk} \hat{\phi}^2$$