

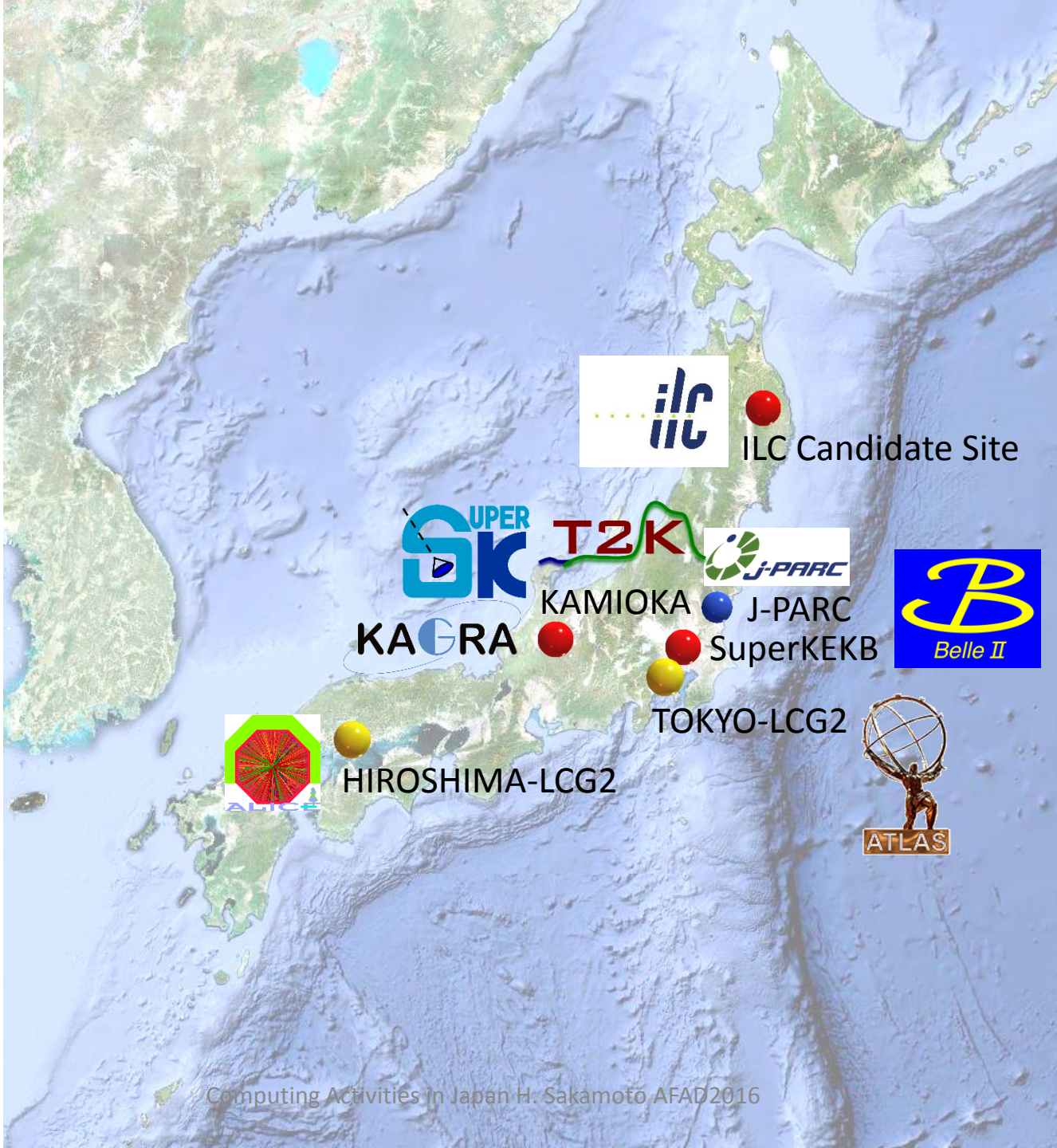


Introduction

- The University of Tokyo
 - Established in 1877. The oldest national university
 - 10 Faculties, 15 Graduate Schools, 11 affiliated research institutes, 13 University-wide centers, three affiliated libraries and two institutes for advanced study.
 - 10,601 staff members including 3,856 faculty staff and 1,996 project research members (614 from abroad)
 - 27,847 enrollments (13,960 undergraduates, 6,721 MA, 5,821 PhD, 10.4% international, 23.0% female)
 - Budgeted revenue of 244,591 million JPY in 2015

International Center for Elementary Particle Physics

- Established in 1974
 - Prof. M. Koshihara as the founder
 - Now 29 research members
- Dedicated for HEP international collaboration
 - DASP at DORIS, DESY (1973~)
 - JADE at PETRA, DESY (1976~)
 - OPAL at LEP, CERN (1982~)
 - ATLAS at LHC, CERN (1994~)
 - MEG at PSI (1999~)
- ATLAS tier2 center (Tokyo-LCG2)
 - Site visit tomorrow (before lunch)



ILC Candidate Site



KAMIOKA

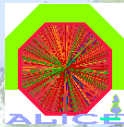


J-PARC

KAGRA



SuperKEKB



HIROSHIMA-LCG2

TOKYO-LCG2



Data Intensive Physics Programs in Japan

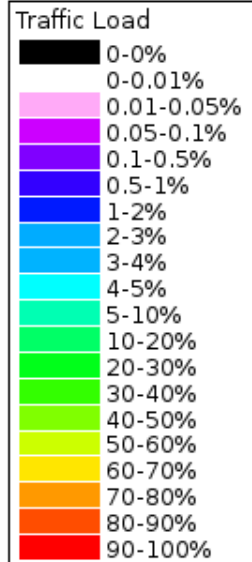
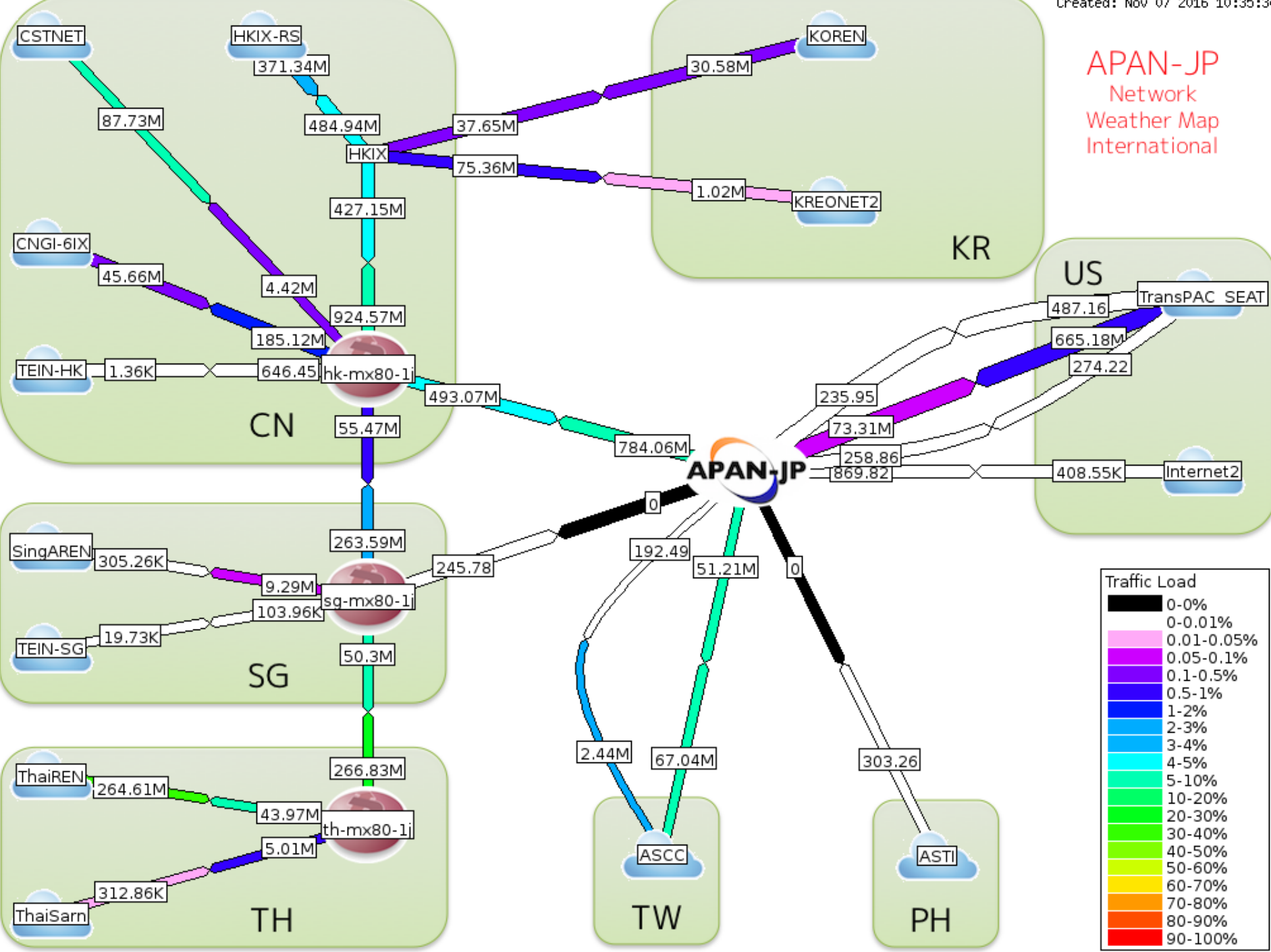
- LHC at CERN
 - ATLAS: Tokyo, KEK... Total 16 institutes
 - ALICE: Hiroshima, Tokyo, Tsukuba
- Super KEK-B at KEK
 - Belle II
- J-PARC (Japan Proton Accelerator Complex)
 - Hadron physics
 - T2K (Tokai to Kamioka) neutrino experiment
- Kamioka Observatory
 - Super Kamiokande (SK)
 - KAGRA (Gravitational wave telescope)
- ILC (International Linear Collider) R&D
 - Candidate site chosen

Asia-Pacific Backbone Topology



- APAN(Affiliated)
- TransPAC/PacificWave
- SingAREN/Internet2
- GEANT/TEIN(Affiliated)
- JGN SINET
- AARNet
- Others

APAN-JP Network Weather Map International



Connectivity in Asia Pacific Region

- Good connection with North America and Europe
 - But quite large RTT (200ms ~ 300ms)
- Relatively poor mutual connectivity inside the region
 - And still rather large RTT
- Small number of HEP institutes
 - Not enough number of computing experts
- Can XRootD help us?