



MASTER SCHEDULE

**MASTER SCHEDULE OF THE LONG SHUTDOWN 2 (2019-2020) FOR THE LINAC4, PSB, PS&TT2, SPS AND LHC MACHINES**

This is the master schedule of the Long Shutdown 2 (LS2) which will happen in 2019-2020. This document gives an overview of the shutdown windows for the Linac2, Linac3, LEIR, Linac4, PSB, PS&TT2, SPS and LHC machine. This will be the reference for the detailed schedules that are being edited by the Facility Coordinators.

DOCUMENT PREPARED BY:

DOCUMENT **TO BE** CHECKED BY:

DOCUMENT **TO BE** APPROVED BY:

M. Barberan, A. Berjillos  
M. Bernardini, J. Coupard  
D. Hay, S. Mataguez  
D. Mcfarlane, E. Vergara

ATS Group Leaders  
+  
O. Aberle, R. Catherall, K. Cornelis, T. Eriksson,  
E. Geschwenker, B. Goddard, K. Hanke, D.  
Kuchler, D. Manglunki, M. Meddahi, S. Roesler,  
G. Romulo, R. Scrivens, R. Steerenberg, M.  
Vretenar, J. Wenninger, H. Wilkens

P. Collier  
(on behalf of LMC)  
R. Losito  
(on behalf of IEFC)  
J.M. Jimenez  
(on behalf of LS2 Committee)  
F. Bordry

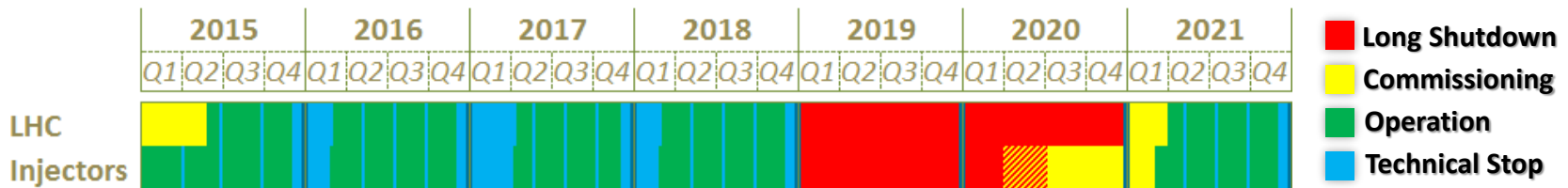
DOCUMENT SENT FOR INFORMATION TO:

IEFC, LMC and LS2C Participants

## • Introduction

The time estimations indicated in this document referred to the following basis:

- The opening of the tunnel machine is counted after the access can be authorized by the radiation protection (RP) experts and before the machine is closed for the operation commissioning (hardware tests, cold-check, beam commissioning).
- The minimum cool-down time after high intensity proton operation is six weeks and the ion run can be part of it due to the lower losses.
- Some other safety aspects (i.e. magnet tests) will block the access; in parallel of the RP cool-down or in addition.
- The access to underground does not mean work allowed:
  - The work will be carried out according to the ALARA principle.
  - Analysis of the work have to be done early in advance between the facility coordinators, the work responsible and the dedicated RP contacts.
- LHC schedule beyond the Long Shutdown 1 (LS1):

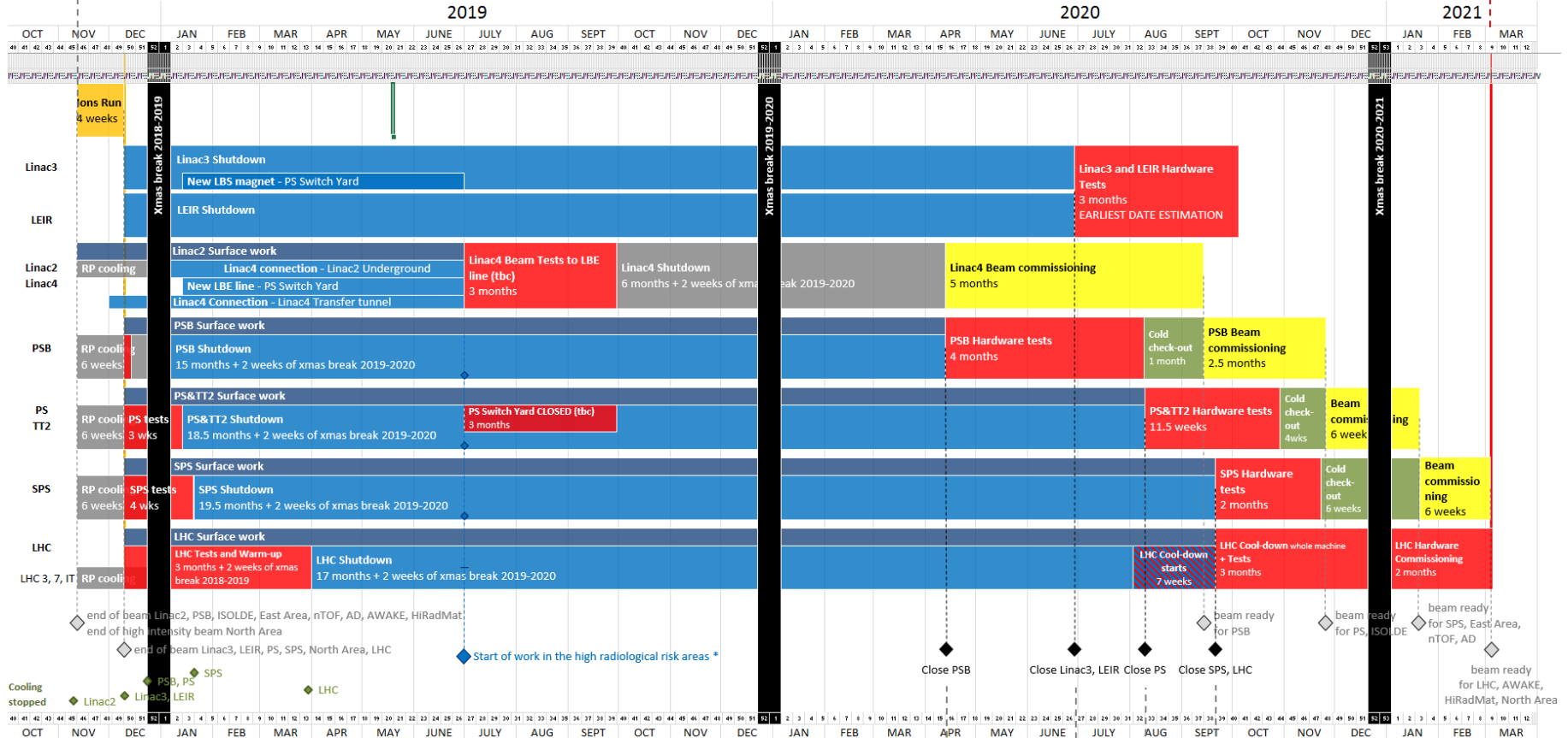


# Master Schedule of the Long Shutdown 2 (2019-2020)

LINAC2, LINAC3, LEIR, LINAC4, PSB, PS&TT2, SPS and LHC machine

LHC PROBE beam  
**Week 9**  
 04/03/2021

**Week 46**  
 12/11/2018



**Week 15**  
10/04/2020

**Week 26**  
26/06/2020

**Week 32**  
07/08/2020

**Week 38**  
18/09/2020

\* High radiological risk areas:

## • References

- [1] presentation at the IEFC on **20/05/2015**, Indico **xxx**, minutes EDMS **xxx**
- [2] presentation at the LMC on **25/05/2015**, Indico **xxx**, minutes lmc **xxx**
- [3] LHC and Injector Accelerator Schedule, [Mike Lamont's website](#)
  - 2018
    - LHC Schedule 2018 v0.3, 22-Jan-2016
    - 2018 Injector Accelerator Schedule v0.2, 09-Jul-2015