

# Offline Software and Computing status

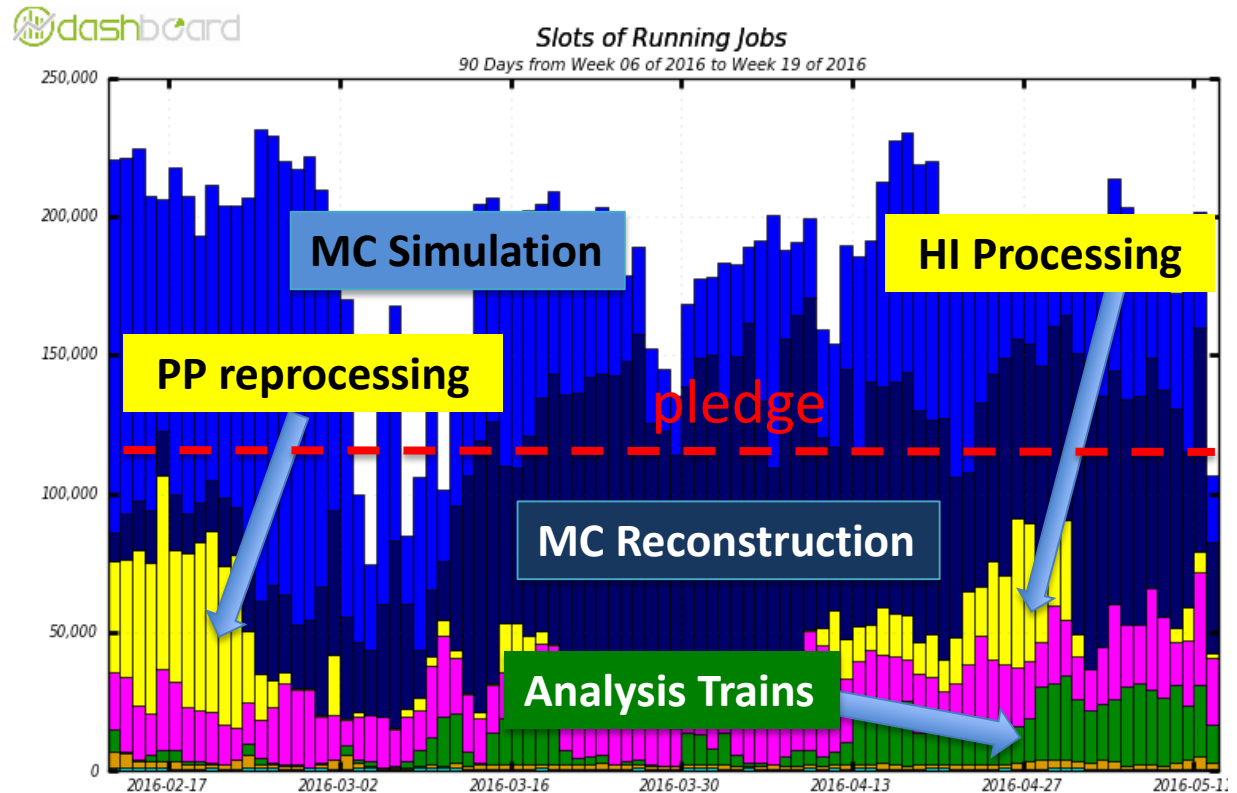
Data processing steadily running beyond pledge

Athena 20.7 offline software delivered in Q1 2016. Will be used in 2016 and early 2017.

Smooth T0 operations so far: many improvements in the infrastructure and workflow

All 2015 pp data reprocessed with new software

2015 HI data processed in May after major improvements in CPU time and memory usage



Train Analysis producing samples with new software, for performance studies and physics analyses

First 2016 data processed by T0 and available on the Grid!

# Evolution

- New simulation release for the MC16 campaign starting June
  - Improved geometry based on 2015 experience, based on Geant 4.10 (multithreading)
- Reconstruction software working on Release21, which now builds on CMake
  - To be used from 2017 until LS2, plan to validate the software by Fall 2016
- AthenaMT (multithreaded offline framework) being actively developed
  - Based on MT version of Gaudi, a widely used software which needs long term support
  - AthenaMT planned to be ready by 2018, still many challenges to face

## Initial studies on Computing for HL-LHC

