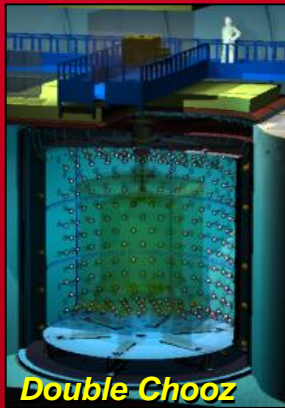


DE LA RECHERCHE À L'INDUSTRIE

cea



Double Chooz



ALICE



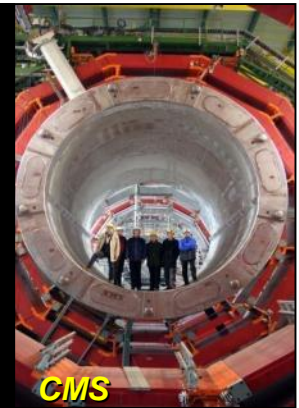
Edelweiss



HESS



Herschel



CMS

Interpreting radiations from the Universe.

Irfu



Site report 2016 IRFU

SOPHIE FERRY / PIERRE-FRANCOIS HONORÉ

- **Grid : IPv6, resources**
- **Infrastructure**
- **Windows**
- **Projects**

IPv6

- Upgrade of our GRID router (spring 2016)
 - No drop of performance < 200Mbit/s anymore

- BUT Network admins kept filters on BGP routes despite our demand
 - local router in a route learning wrong configuration, redirecting lhcone on general internet -> corrected

- Starting dual stack w/o DNS (since 2016/10/10)
 - validated tests with a 10Gbits perfSonar
 - v4/v6 performance equivalent at least in the FR_NGI (for the IPv6 ready part of it)
 - only for incoming ipv6 packets & our intra-traffic (local /etc/hosts)
 - known possible issue : xrootd version for some CMS factory....

Old(/New) Computing resources

- 8 Dell C6320 : Intel Xeon E5-2650 v3 with 128 GB memory
 - Last time : wrong 10G cards plus missing 1 metallic piece for the chassis
 - Finally DONE (end of august!)

Site Resources:

- Computing: 271 servers => 5272 job slot (sgl.core);
- Storage: 73 servers => 2.8Po

New computing resources

- 5 Dell C6320; Intel Xeon E5-2650 v4 with 160GB memory

New Storage resources

- 20 Dell R720xd, Intel Xeon E5-2600 v4
 - 16 disks 4To
 - total = 1280 To

Each summer brings new “?” & issues

- August and temperature > 35 deg C.
 - 220KW Carrier cooling system went off
 - having a look at it (on the roof of the institute) we see a 100KW Emerson being off for a while
 - 200KW available out of 520KW (420KW effective)
 - Alarms ??
 - 1 month with basically no computer resource until repair (23/09)

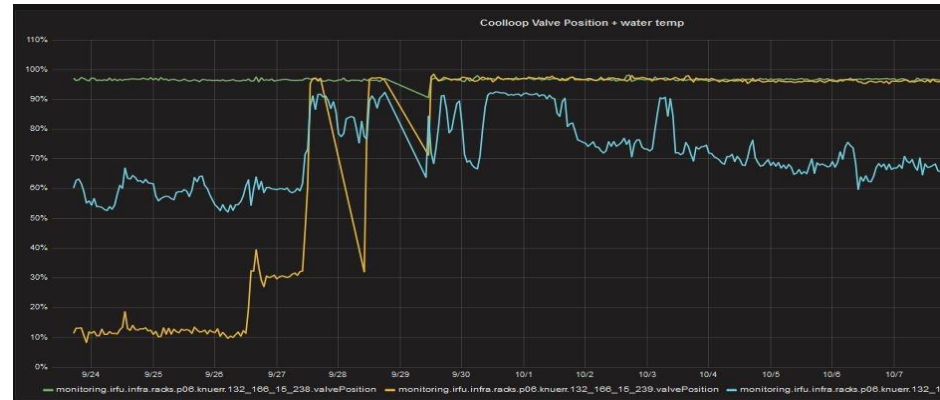
Necessary Monitoring

- Sensor added to monitor the input CoolLoop temperature

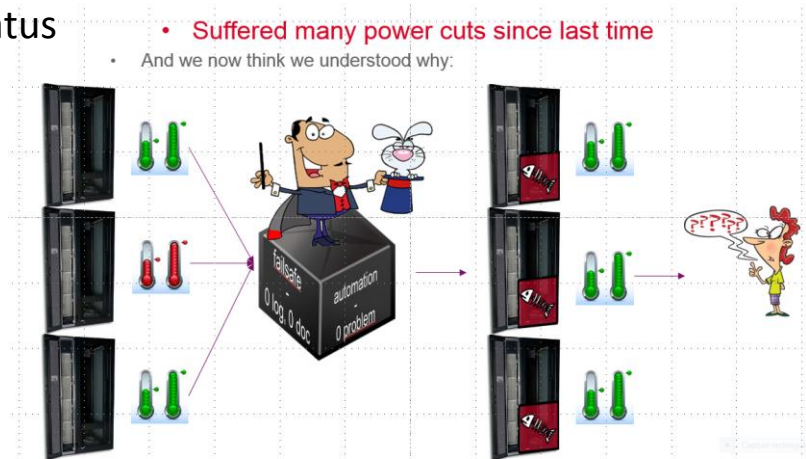


More Monitoring

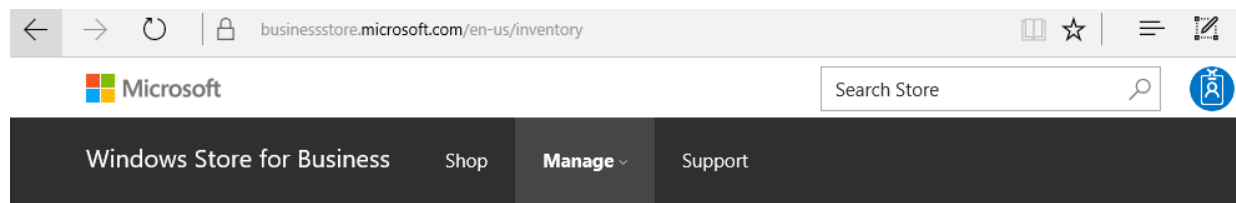
- Status of valves at the entrance of coolLoop
 - One valve to be changed
 - ok
 - broken
 - not so ok : need to keep the front door open



- Failsafe automate still not in clean status



- POC CEA/Microsoft since june 2016
- Official image based on Windows 10 Enterprise 1607
- SCCM 1606 with Store for Business to deploy Appx





Inventory

The following products were purchased by administrators in your organization.
[Get more info](#)

Search your inventory

Refine

Product	Last modified	Private store	Available licenses	Supported devices	Actions
 Facebook Facebook Inc Online	9/15/2016	Add in progress	Unlimited	PC, Mobile	...
 Translator Microsoft Corporation Offline	9/14/2016	Not applicable	Unlimited	PC, Mobile, Windows 10 all devices	...

EOSC European Open Science Cloud

- Answered call in spring
 - CEA/IRFU part of WP6 “Interoperability”

Objectives

The interoperability WP develops and demonstrates the interoperability requirements between e-Infrastructures, domain research infrastructures and other service providers needed in the European Open Science Cloud. We map interoperability in two tracks:

- A. Research and Data Interoperability*
- B. Infrastructure interoperability*

Human Resources

- 1 new engineer 12/2016 from INRIA

that's all!