

The background of the slide is a complex, abstract network diagram. It consists of numerous nodes, represented by small circles, connected by thin, grey lines. Some nodes are larger and more prominent, such as a large white circle with a black outline at the bottom center and several others in the upper left. The lines form a dense, interconnected web that spans the entire width of the slide, with some lines curving and looping back. The overall aesthetic is technical and modern, suggesting a focus on data, networks, or scientific research.

# Introduction for summer students

2016



CERN: A UNIQUE  
ENVIRONMENT IN WHICH  
TO PUSH TECHNOLOGIES  
TO THEIR LIMITS

# What is CERN?

## European Organization for Nuclear Research

~ 2300 staff  
~ 1050 other paid personnel  
~ 11000 users  
Budget ~1100 MCHF

### Founded in 1954

**Member States:** Austria, Belgium, Bulgaria, Czech Republic, Denmark, Finland, France, Germany, Greece, Hungary, Israel, Italy, Netherlands, Norway, Poland, Portugal, Slovakia, Spain, Sweden, Switzerland and United Kingdom

**Candidate for accession:** Romania

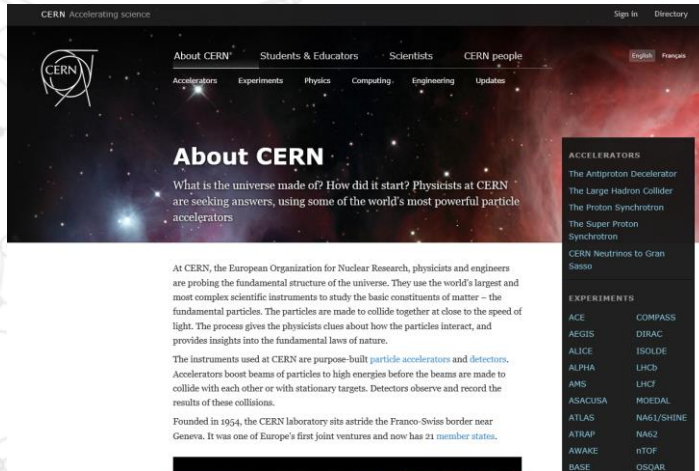
**Associate Members in the Pre-Stage to Membership:** Cyprus, Serbia,

**Associate Members:** Pakistan, Turkey

**Observers to Council:** India, Japan, Russia, United States of America, the European Commission, Joint Institute for Nuclear Research and UNESCO



# CERN Structure



<http://home.cern>

<http://home.cern/about>

Beams      Information Technology  
 Site Management and Buildings  
 Human Resources            Engineering  
 Theoretical physics      Technology  
 Site Management and Buildings  
 Experimental physics  
 Industry, Procurement and Knowledge Transfer

## IT Information Technology Department

Search this site

Search

[about us](#)

[services](#)

[service status board](#)

[for IT members](#)

[help](#)

### CERN Data Centre

Facts & figures, photos, access and visits.

### Help

Service Desk by phone, by e-mail and the online FAQ.

### quick tools

#### everyday

[Account Management](#)  
[Desktop & laptop hardware](#)  
[Mac](#)  
[Linux](#)  
[Windows \(NICE\)](#)  
[Printing Services](#)

### Computer

#### Security

Computing Rules, advice, training and security services.

### Projects

[WLCG](#), [openlab](#), [EU projects](#) and more.

### conferencing

[Audio-conferencing](#)  
[Vidyo](#)  
[Room booking](#)  
[Meetings \(InDico\)](#)

### Getting Started

How to set up your computing environment.

### Services

IT services, resources and information.

### connectivity

[eduroam](#)  
[Visitor laptop registration](#)  
[Network portal](#)  
[Wireless](#)  
[e-mail](#)  
[Telephones](#)  
[Remote connection](#)

### Health & Safety

Risks and recommendations for the IT environment.

### What's On

Meetings, conferences, newsletters, colloquia, training and more.

### monitoring

[IT Service Status Board](#)  
[Service Level Status](#)  
[Lemon](#)  
[Network](#)  
[LHCOPN](#)

### SERVICE LEVEL STATUS

- Up Services for physics
- Up Worldwide LCG
- Up Networking
- Up Infrastructure
- Up Windows Services
- Up Mail and Web
- Up Databases

### NEWS

SEE ALSO [IT NEWS FOR EXPERIMENTS](#).

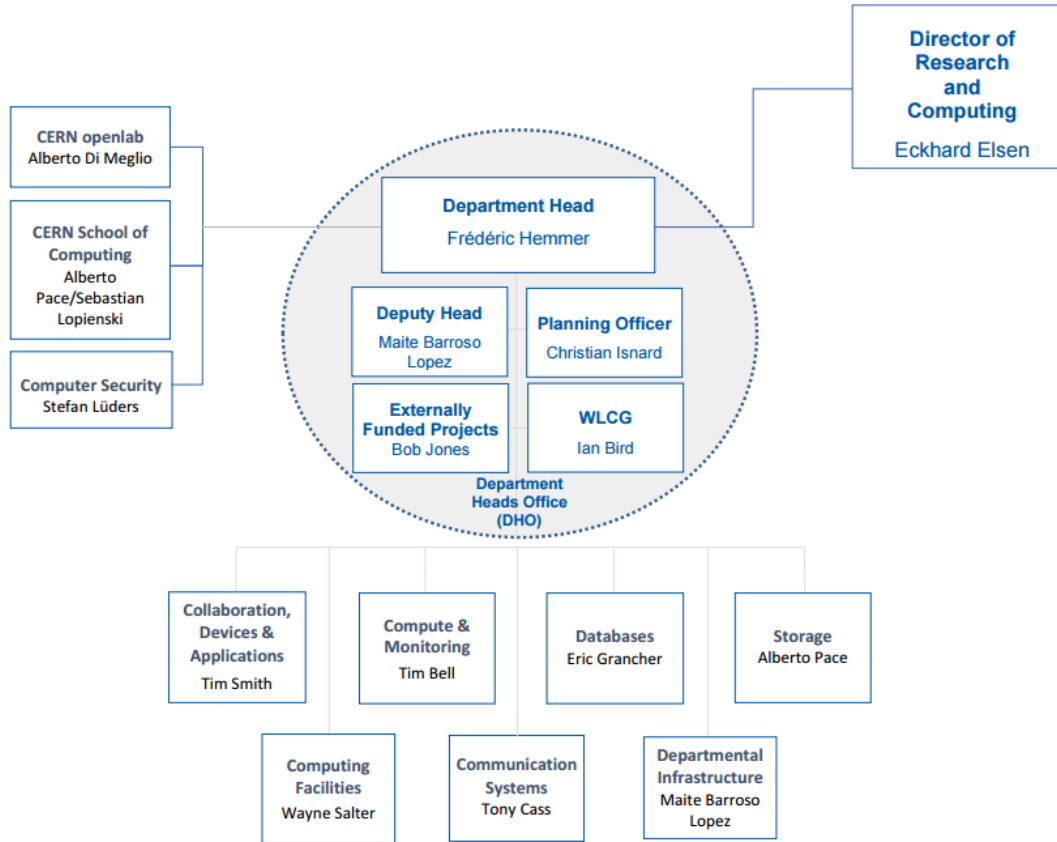
[CERN switches to Comic Sans style](#) | 1 Apr 2014

[Mac OS X 10.9.2 fixes critical SSL bug](#) | 26 Feb 2014

[Mac OS X 10.9.2 fixes critical](#)

<http://information-technology.web.cern.ch/>

# IT Department Structure



# CERN openlab in a nutshell

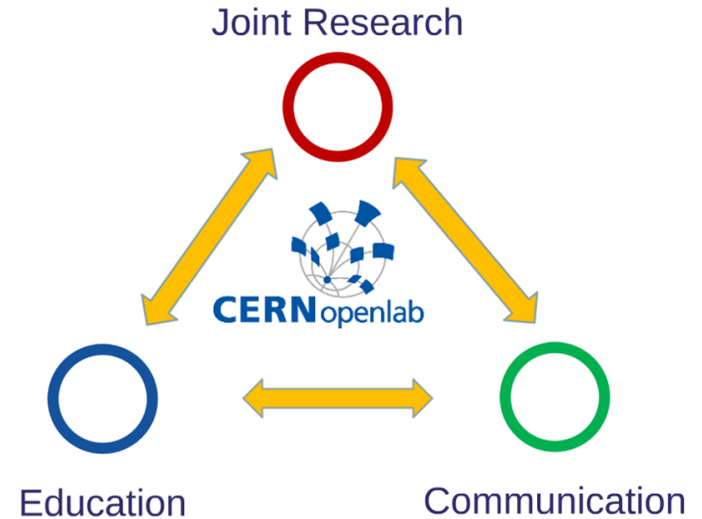
**A science – industry partnership to drive R&D and innovation with over a decade of success**

- **Evaluate** state-of-the-art technologies in a challenging environment and improve them

- **Test** in a research environment today what will be used in many business sectors tomorrow

- **Train** next generation of engineers/employees

- **Disseminate** results and outreach to new audiences



Partners



Contributors



Associates



Research





Engagement of multi-disciplinary

**CERN EXPERTS** collaborating on joint projects

Association with the

**WORLD'S LEADING INNOVATORS** in the IT industry

**DISSEMINATION OF RESULTS**

as success stories to a wide range of audiences

# CERN openlab Phase V

Recruitment channel for **HIGHLY SKILLED**

**AND TRAINED** young IT specialists

On-site **VISITS**

# 15 Years of Successful Collaboration

Set-up  
2001

I  
2003

II  
2006

III  
2009

IV  
2012

V  
2015

15 Years  
Anniversary

2016

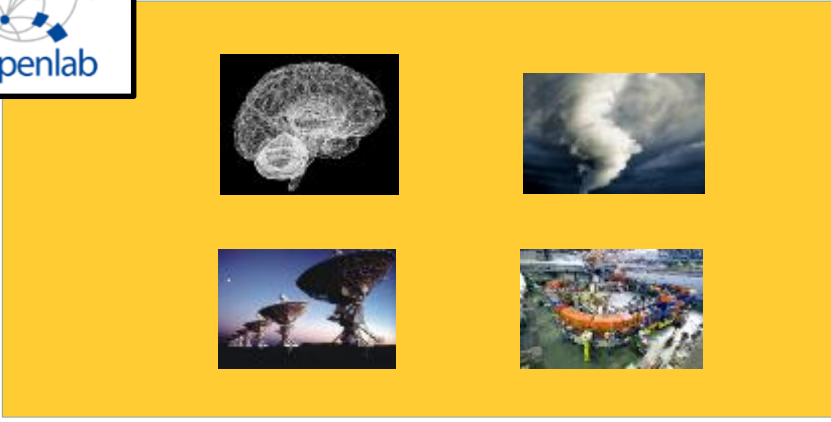


*CERN openlab Collaboration Board 2016*

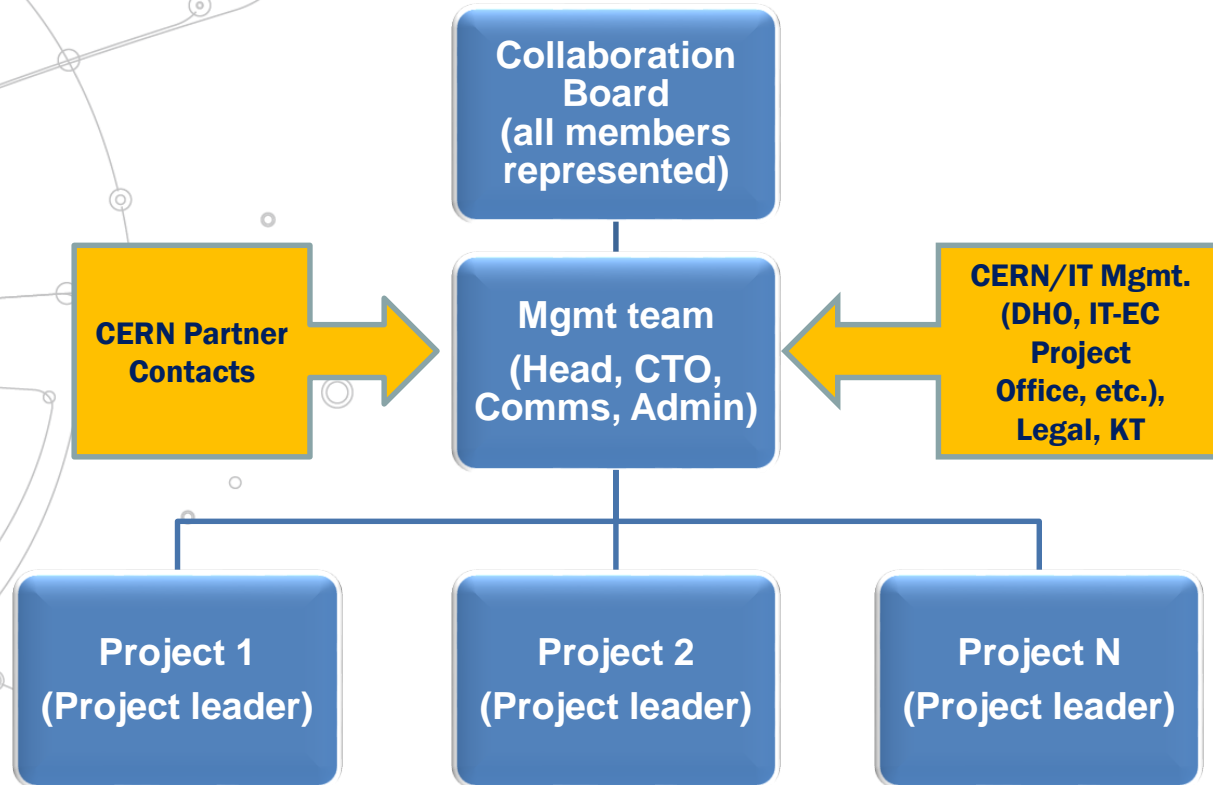
# The community







# How do we manage it?



# The Team

**Maria Girone**  
CERN openlab  
CTO



**Kristina Gunne**  
CERN openlab  
Admin/Finance Officer



**Fons Rademakers**  
CERN openlab  
CRO



**Sotirios Pavlou**  
Junior Admin Officer



**Maria-Athanasia Pachou**  
Junior Communication  
Officer



**Melissa Gaillard**  
IT Department  
Communication Officer



**Alberto Di Meglio**  
CERN openlab  
Head



**Andrew Purcell**  
CERN openlab  
Communication Officer




# The Technical Programme



Data acquisition and filtering  
**Collecting data**




Networks and connectivity  
**Connecting resources**



Data storage architectures  
**Storing and serving data**



Compute management and provisioning (cloud)  
**Managing resources for processing**



Computing platforms, data analysis, simulation  
**Improving processing and code efficiency**

**Medical applications**



Data analytics/Machine Learning  
**Extracting information**

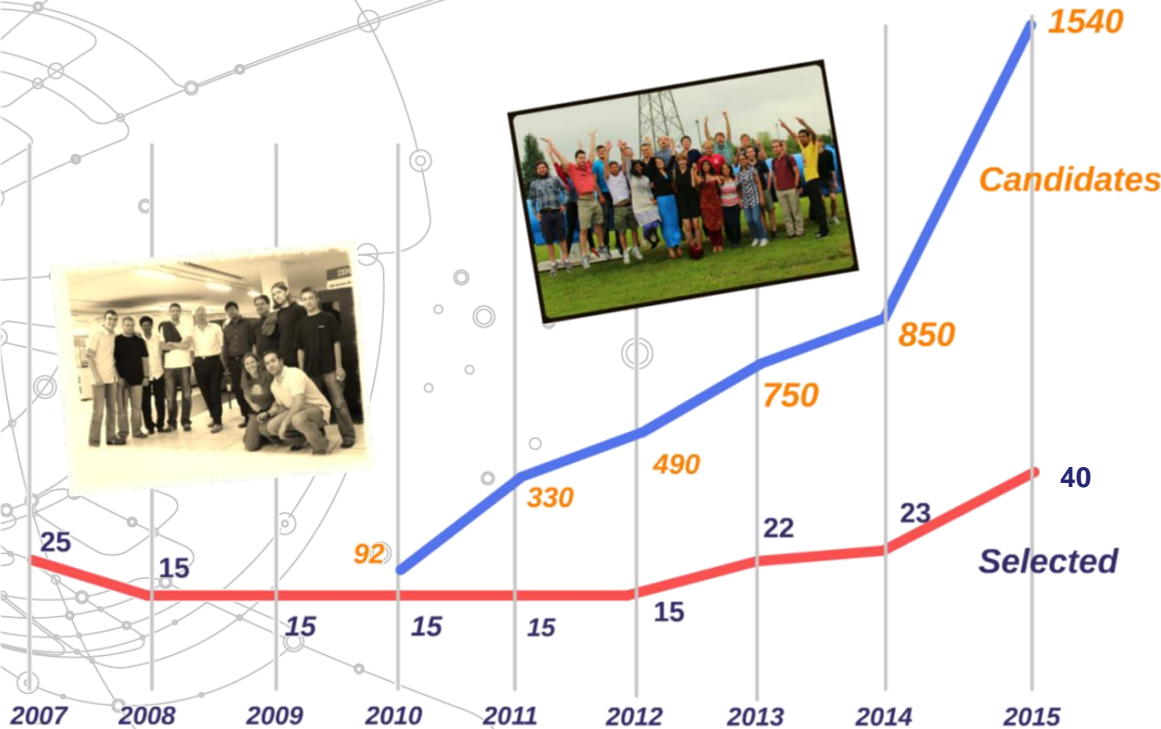
# The Educational Programme

Most of the dedicated personnel in CERN openlab are young, talented Fellows receiving **hands-on experience** on new technologies

A **comprehensive offer** of general and specific workshops, training events and initiatives

**Experts** from industry and laboratories give lectures **at events inside and outside CERN**

# Summer Student Programme



## In 2016

- ~1500 applicants
- 39 selected students
- Lecture series
- Visits to external labs/companies
- Lightning talks session



# Your CERN Experience

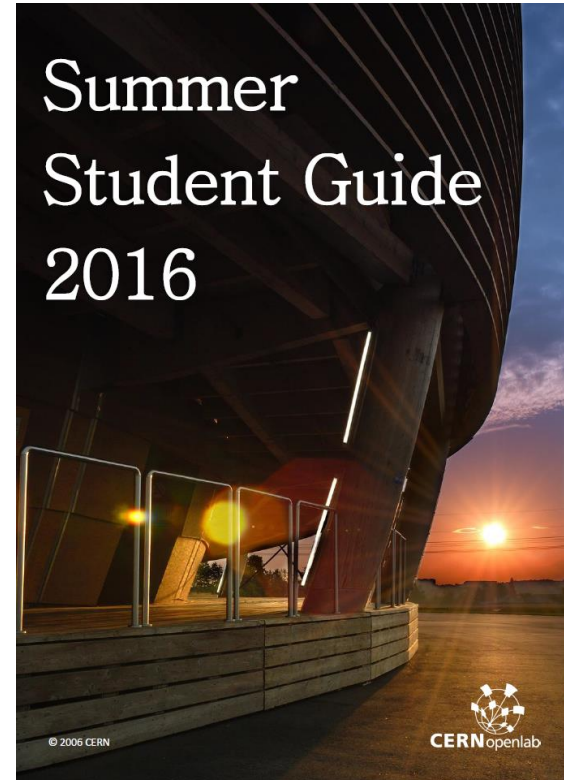
- 9 weeks
- A project to complete
- A report to be submitted
  - Template provided (<http://openlab.web.cern.ch/templates>)
  - Initial draft after 4 weeks (table of content, main sections)
  - Final draft to your supervisor a week before leaving
- A 5-minute 'lightning talk' to describe your project and its outcome
- Visits to external companies and research institutes
- A series of lectures about IT, computing and data management applied to HEP and other scientific domains
  - <http://indico.cern.ch/category/8040/>

# Confidentiality agreement

- Some of you will be carrying out work that is confidential.
- You may be working with technologies from industrial partners that is still under a non-disclosure agreement (NDA).

# Summer student guide

[http://indico.cern.ch/  
event/537114/  
overview](http://indico.cern.ch/event/537114/overview)



# Connect with us – and each other!

<http://cern.ch/go/lw7v>



<http://cern.ch/go/9s9L>

#### EXECUTIVE CONTACT

Alberto Di Meglio, CERN openlab Head  
alberto.di.meglio@cern.ch

#### TECHNICAL CONTACTS

Maria Girone, CERN openlab CTO  
maria.girone@cern.ch

Fons Rademakers, CERN openlab CRO  
fons.rademakers@cern.ch

#### COMMUNICATION CONTACTS

Mélissa Gaillard, IT Dep. Communication Officer  
melissa.gaillard@cern.ch

Andrew Purcell, CERN openlab Communication Officer  
andrew.purcell@cern.ch

Maria Pachou, CERN openlab Junior Communications Officer  
maria-athanasia.pachou@cern.ch

#### ADMIN/FINANCE CONTACTS

Kristina Gunne, CERN openlab Administration Officer  
kristina.gunne@cern.ch

Sotirios Pavlou, CERN openlab Junior Administration Officer  
sotirios.pavlou@cern.ch