

# Vacuum vessel calculations v6

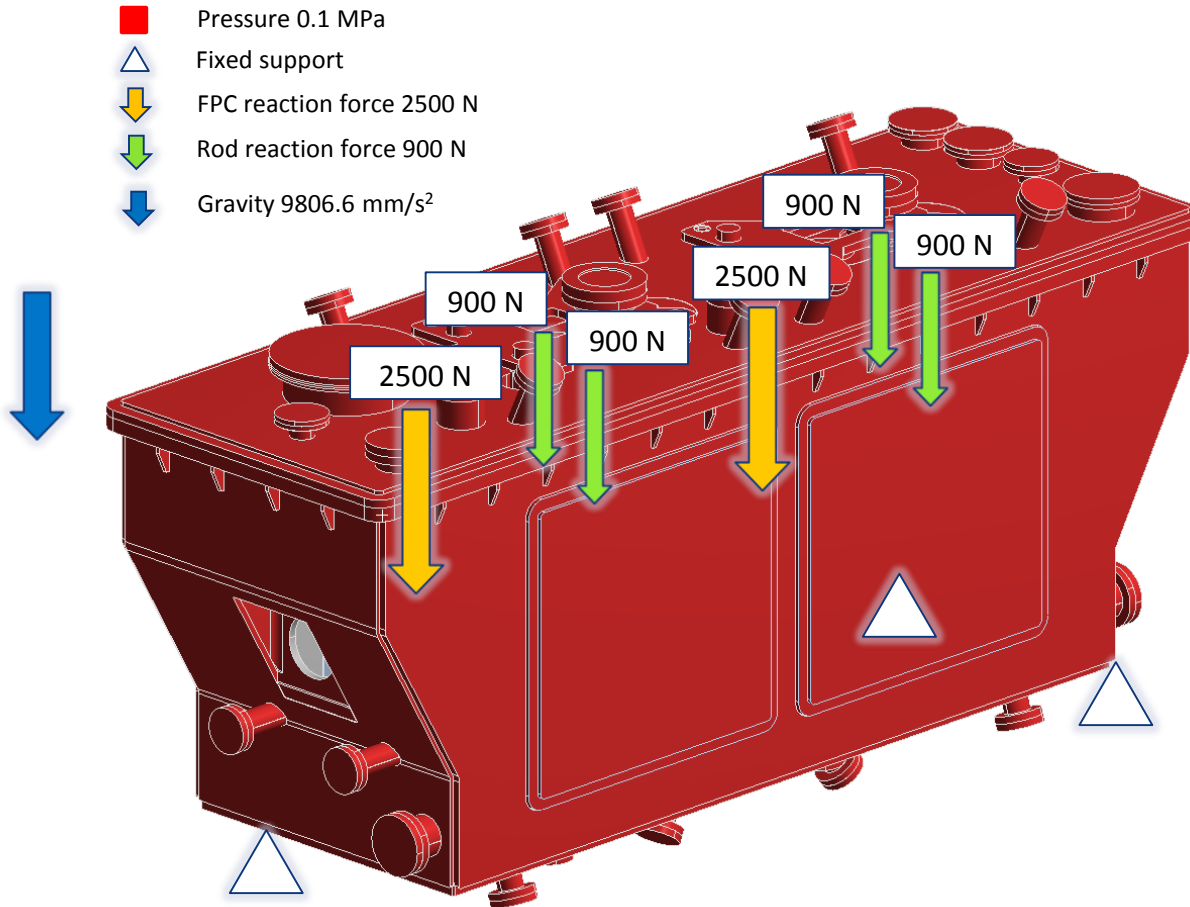
Norbert Kuder (EN-MME)

04/07/2016



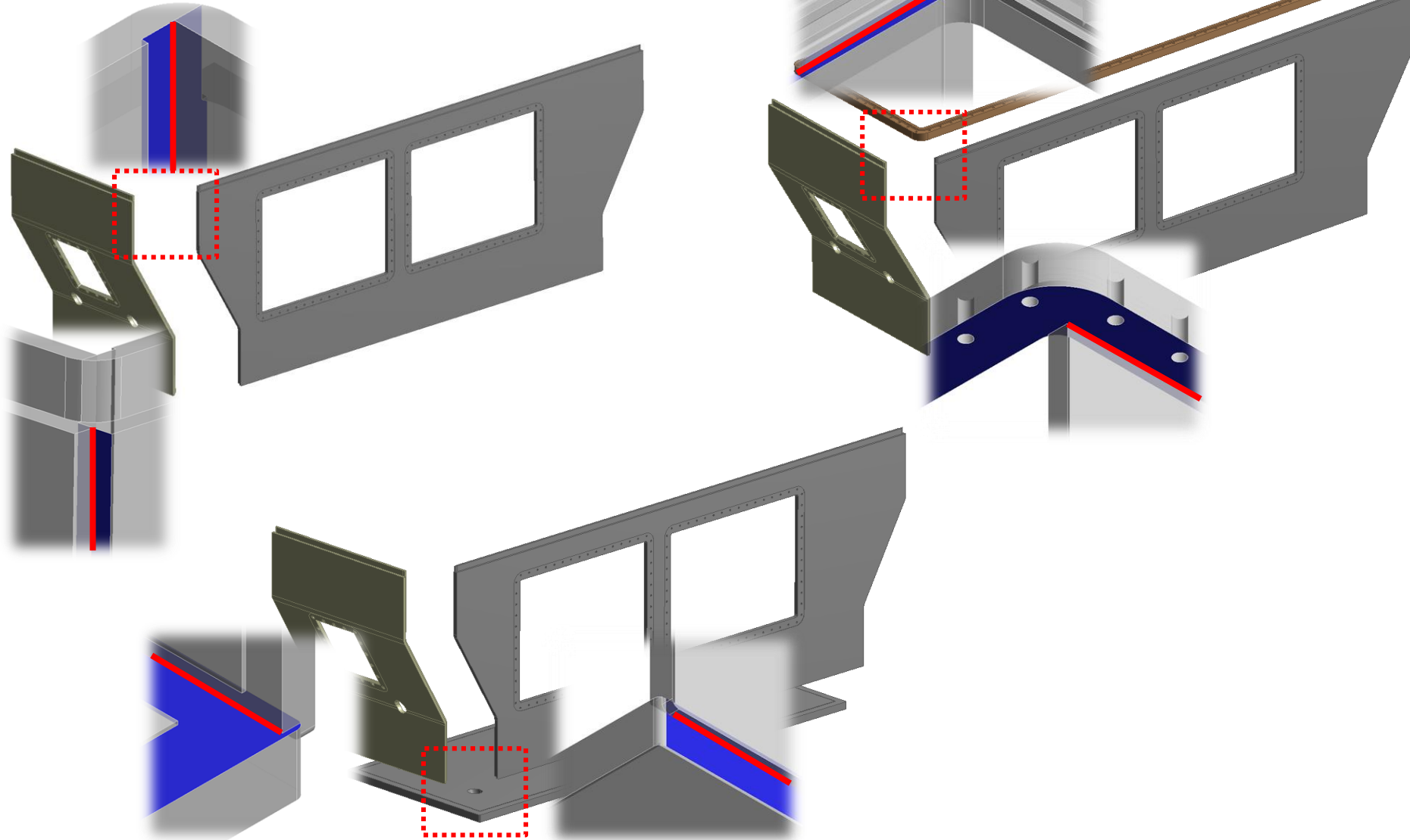
ENGINEERING  
DEPARTMENT

# BCs and loads

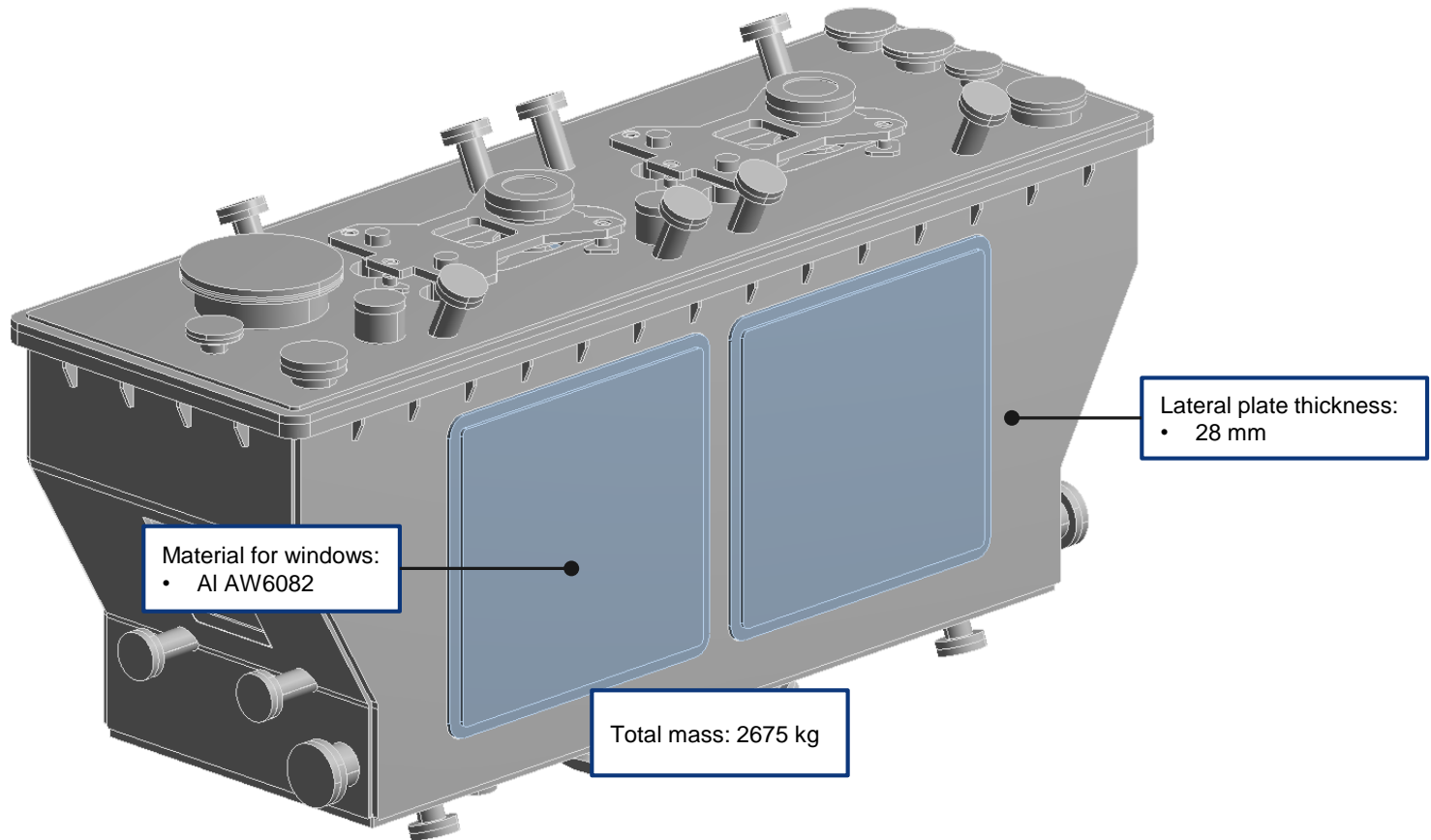


- Bolts not modelled due to validity of a bonded model.

# Welds

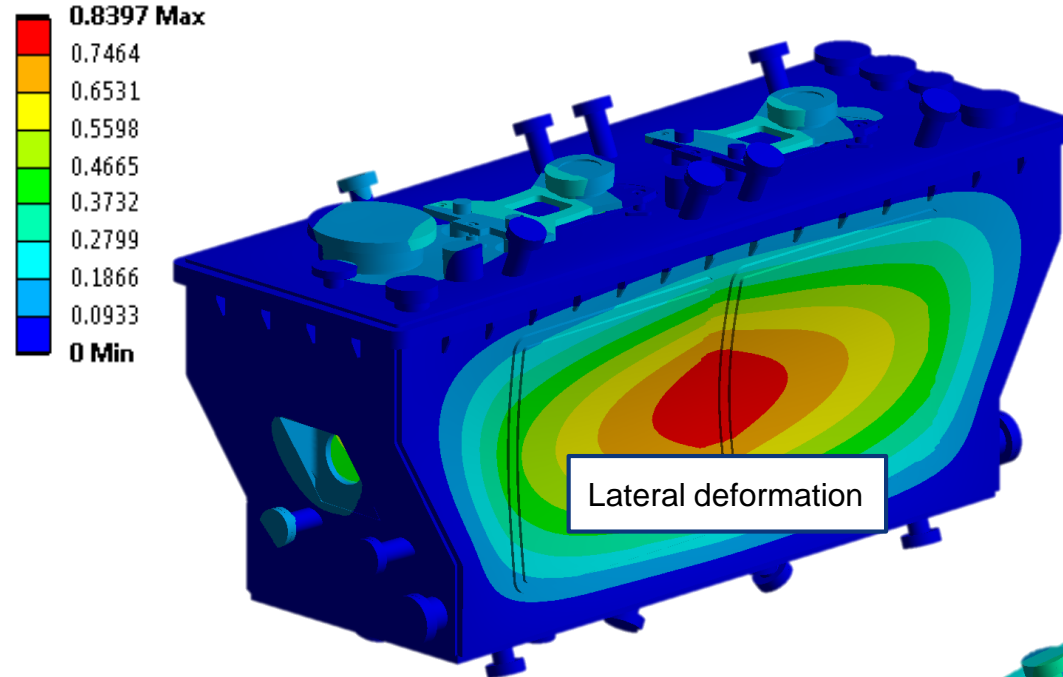


# Model

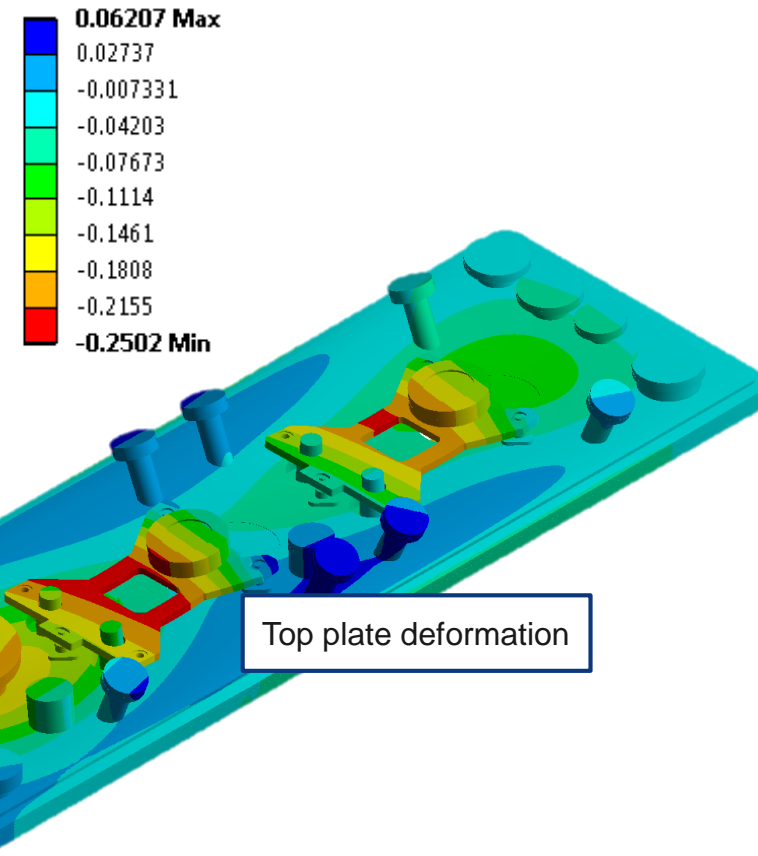


# Considered results

Total Deformation  
Type: Total Deformation  
Unit: mm



Directional Deformation  
Type: Directional Deformation(Z Axis)  
Unit: mm

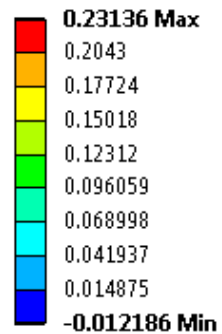


# Considered results

Directional Deformation

Type: Directional Deformation(X Axis)

Unit: mm



Deformation of the FPC plate: 0.23 ÷ 0.25 mm

Deformation of the top plate: 0.11 ÷ 0.16 mm

