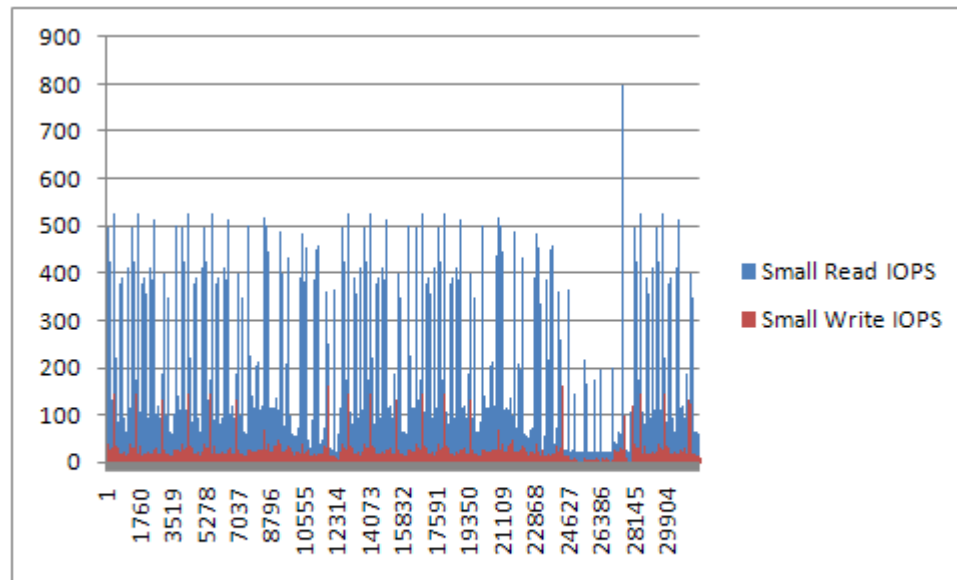


3D at SARA

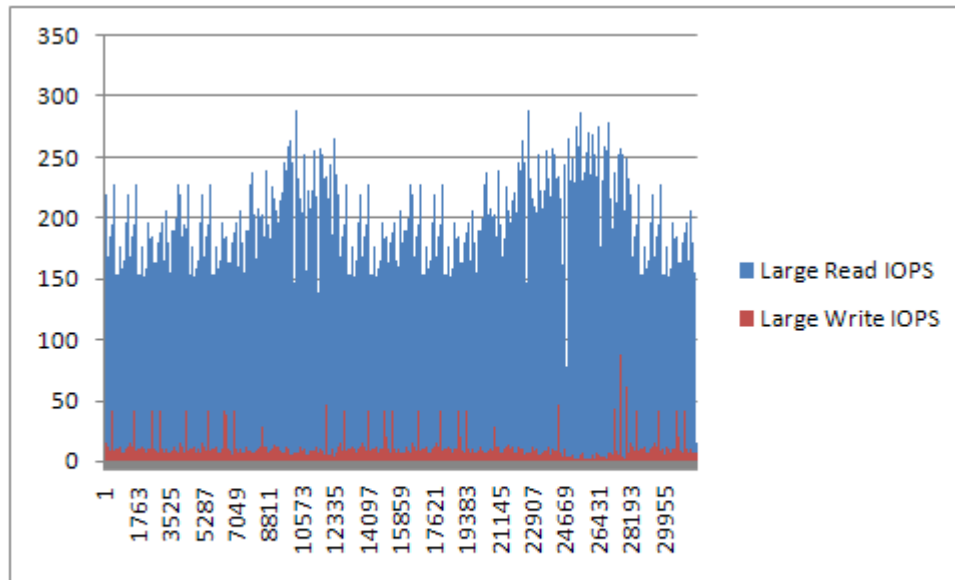
Current situation

- Two node RAC cluster (dual core)
- 300 GB disk storage

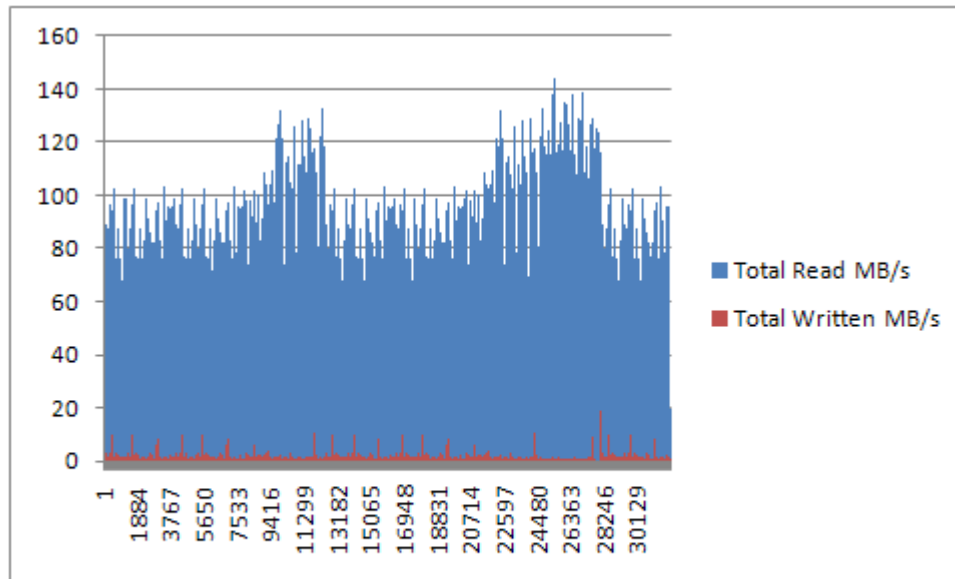
Measured small read/write IOPS



Measured large read/write IOPS



Measured read/write MB's



Future situation (May/June 2009)

- 7 node RAC cluster (quad core)
- 15 TiB disk storage
- Disk performance: at least 15 KIOPS (hardware hasn't been delivered yet so no test results are available)
- Two nodes are reserved for other Grid services (LFC's)