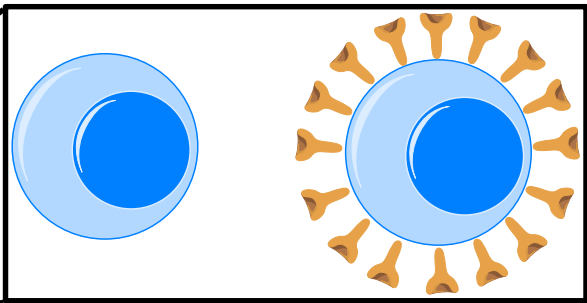
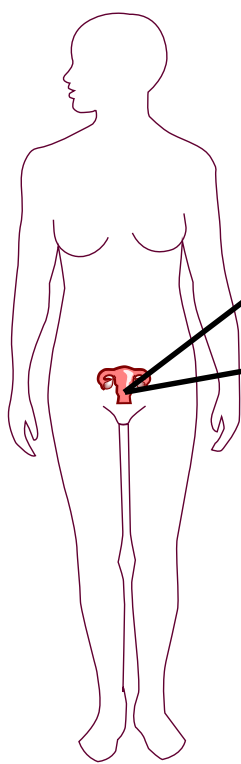
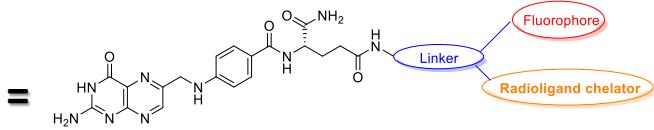
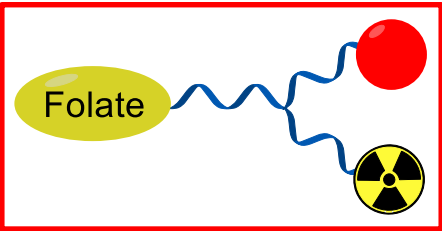


# Bifunctional biologands for ovarian cancer

Laboratory of Bio-organic Chemistry and Molecular Imaging  
Tkhe-Kyong Fam



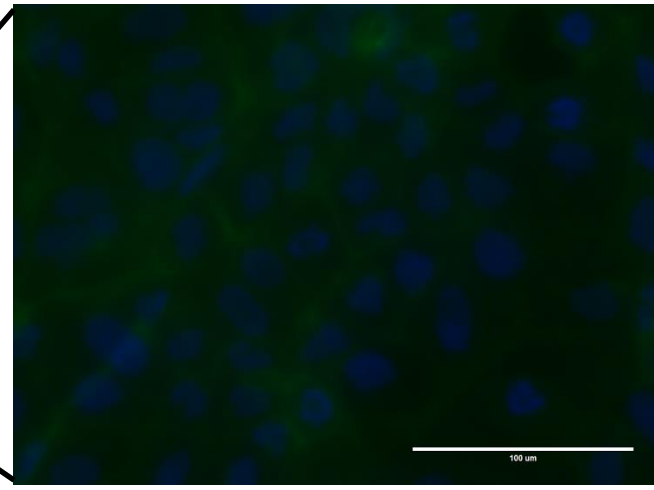
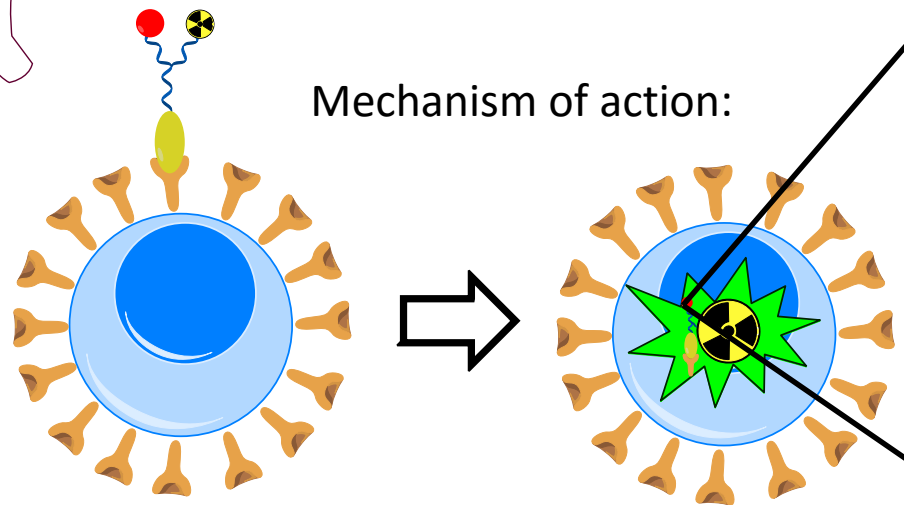
normal cell      cancer cell (Folate receptor)



Tb 149	Tb 152	Tb 155	Tb 161
4.2 m	4.1 h	4.2 m	17.5 h
6.90 d	5.32 d	6.90 d	6.90 d
α 3.99	β <sup>+</sup> 1.8	α 3.97	β <sup>+</sup> 2.8...
γ 795	γ 344	γ 352	γ 344
165...	165...	165...	165...
			β 0.5; 0.6...
			γ 26; 49; 75...
			e <sup>-</sup>

©medicalxpress.com/news/2012-12-terbium-swiss-army-knife-cancer.html

Mechanism of action:



The 1<sup>st</sup> MEDICIS-Promed General Training. Manchester, 6-9 September 2016

This project has received funding from the European Union's Horizon 2020 research and innovation program under grant agreement No. 642889