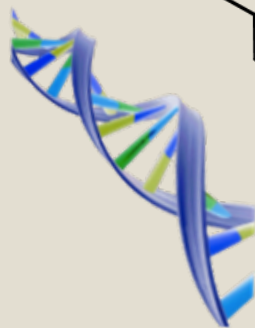


DESIGN, SYNTHESIS AND PRE-CLINICAL EVALUATION OF CLICKABLE ^{161}Tb - COMPLEXES FOR DNA-TARGETED RADIOIMMUNOTHERAPY

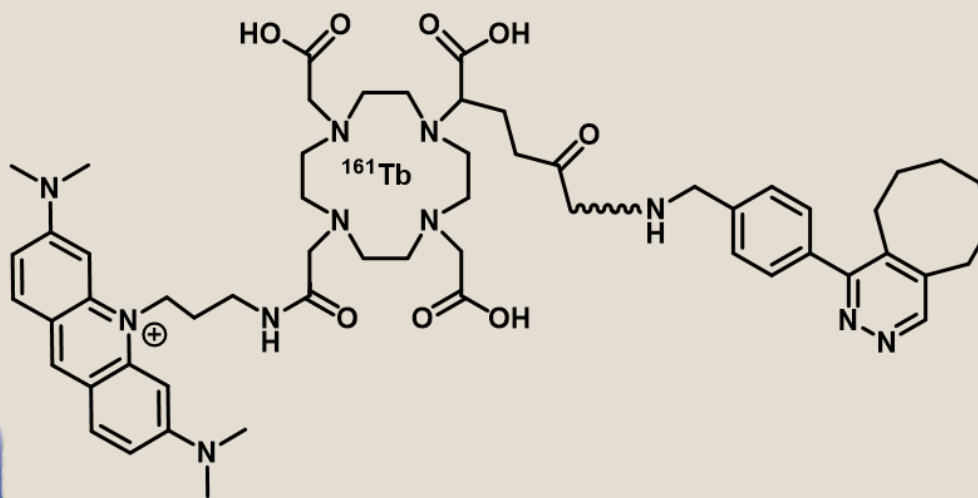
D'Onofrio Alice ESR8 - IST C2TN Lisbon
08/09/2016 Manchester, Medicis Promed Training Week

Clickable ^{161}Tb -Complexes for DNA-Targeted Radioimmunotherapy

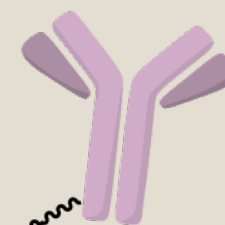
ACRIDINE ORANGE
Increase efficacy of ^{161}Tb



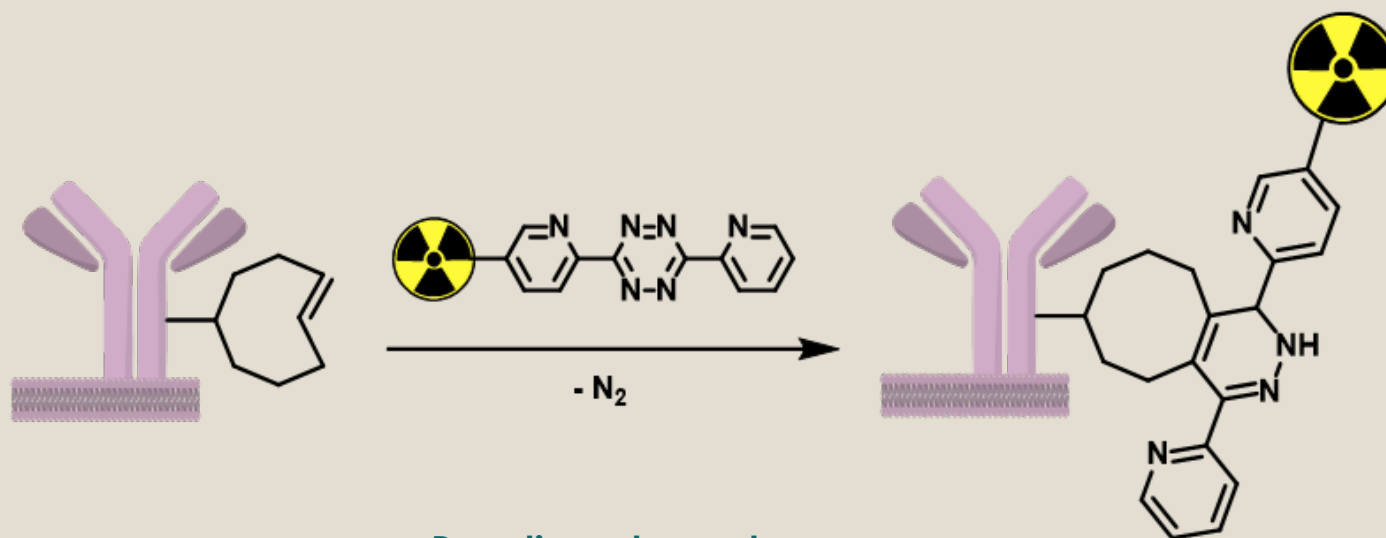
DOTA CHELATOR
Stabilize the radiometal



MONOCLONAL ANTIBODY
Increase selectivity

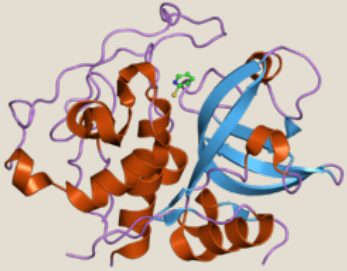


Click-Chemistry Strategy: the inverse electron demanding Diels Alder

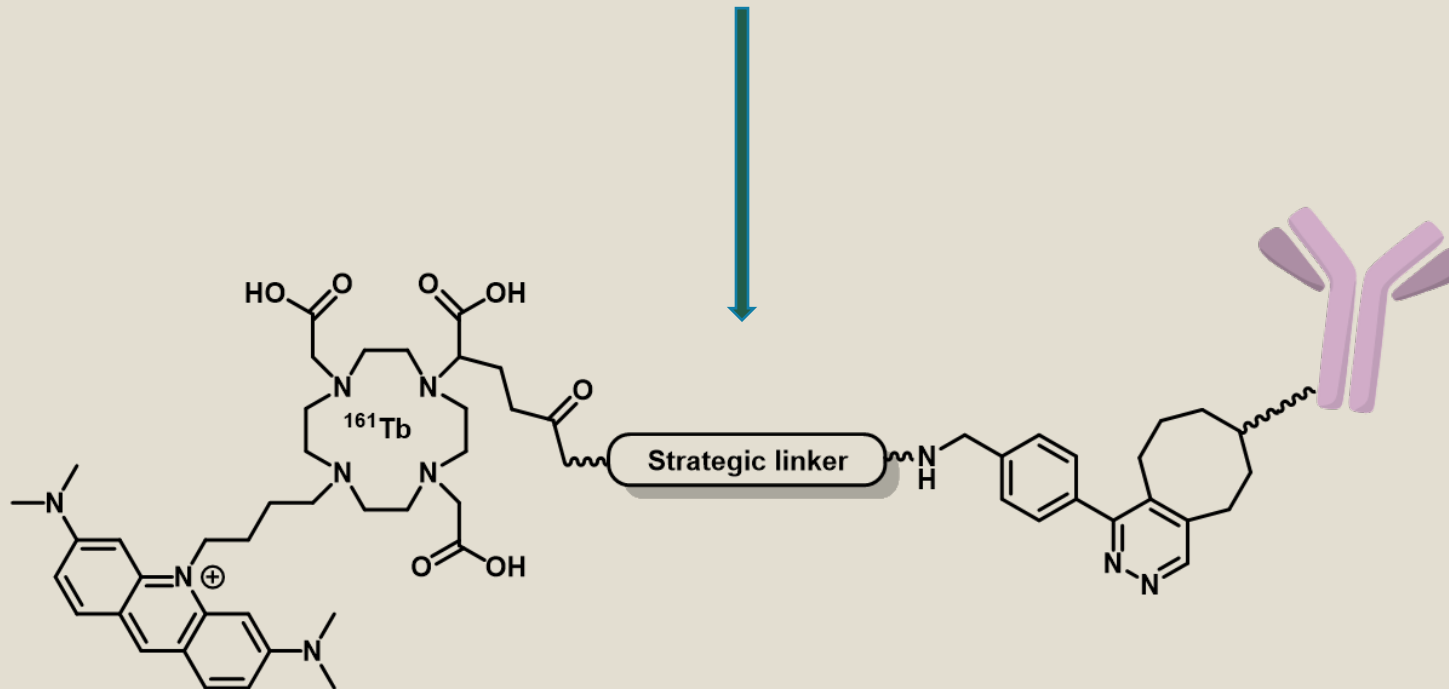


Reaction rates up to
 $30000 \text{ L mol}^{-1} \text{ s}^{-1}$ * *in vivo*

Bio-Cleavable Linker



Cathepsin-B: Family of proteases over-expressed in several solid tumors able to recognize and cleave specific oligopeptides.





Thank you for the attention!

This research project has been supported by a Marie Skłodowska-Curie Innovative Training Network Fellowship of the European Commission's Horizon 2020 Programme under contract number 642889 MEDICIS-PROMED.