

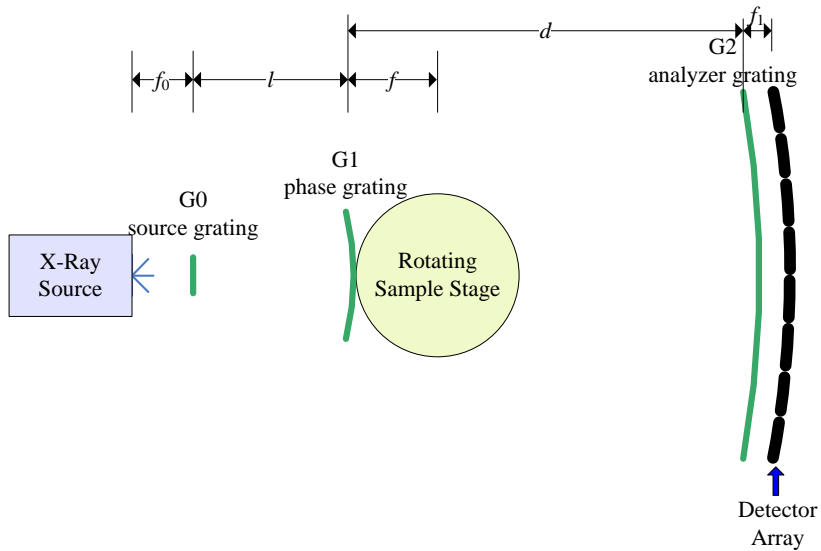


The Detector System Design for the Grating-based Phase Contrast Imaging CT Prototype

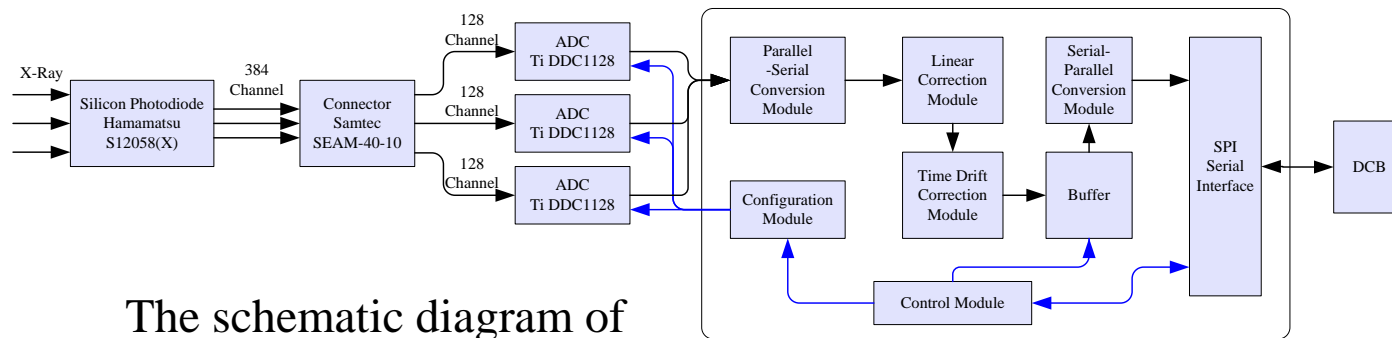
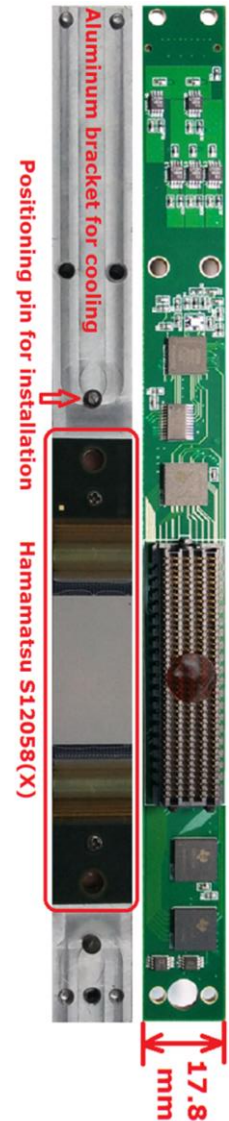
Lian Chen, Rongqi Sun, Ge Jin

2018-06

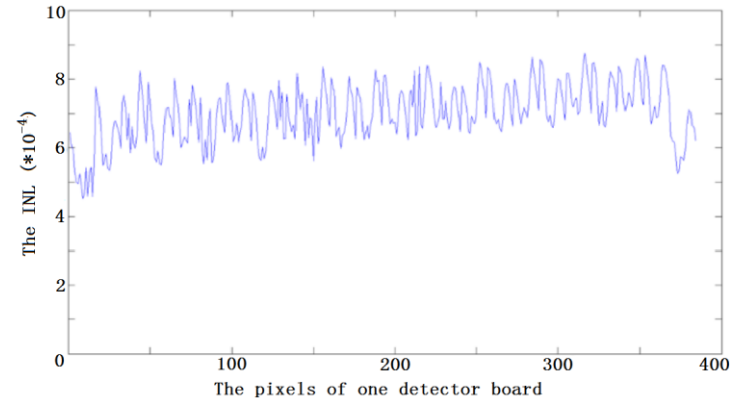
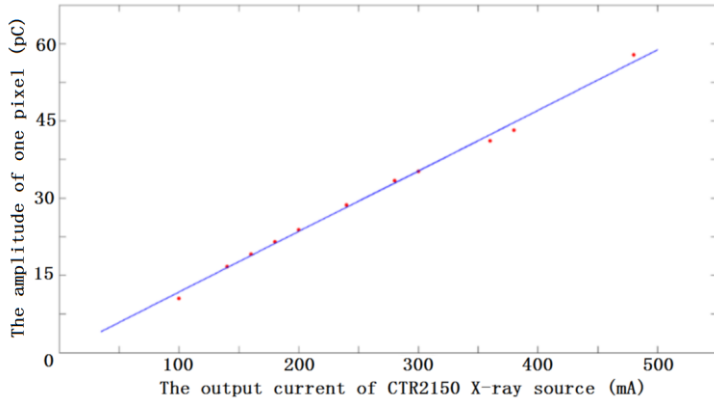
System Design



The schematic diagram of three grating phase-contrast image method



The schematic diagram of DAS board



linearity of one pixel response (left) and the INL of 384 pixels on one detector board

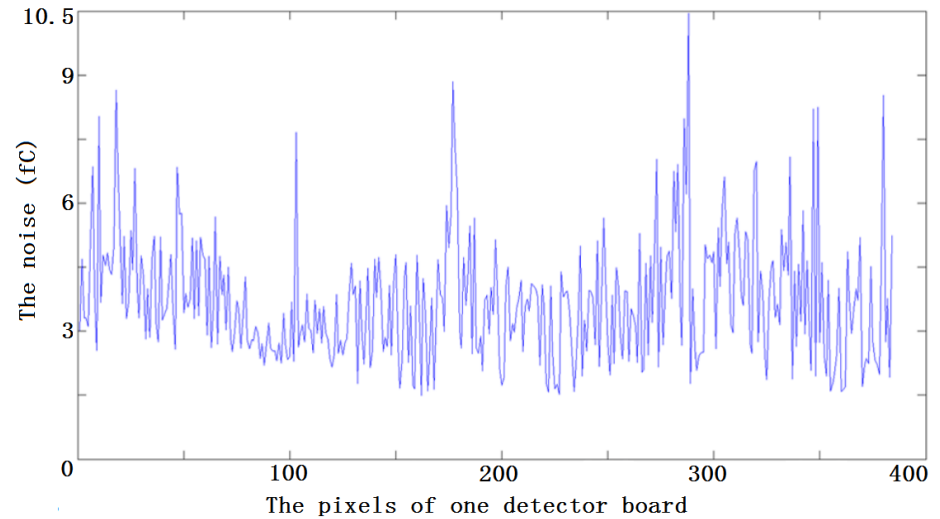
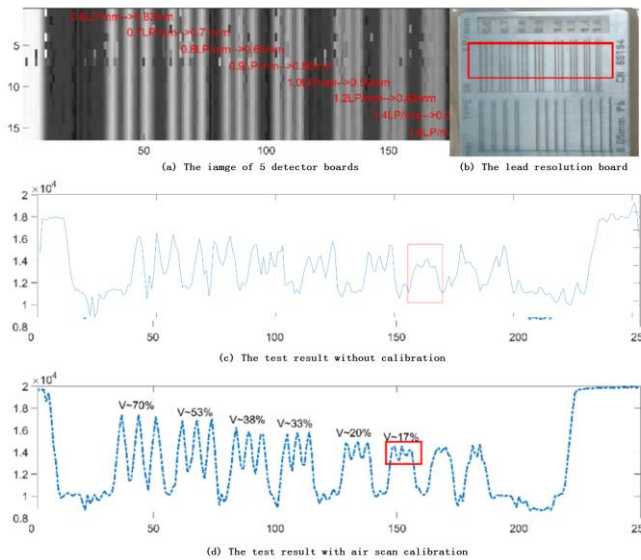


Fig.5 The spatial resolution test result

The equivalent noise(a)