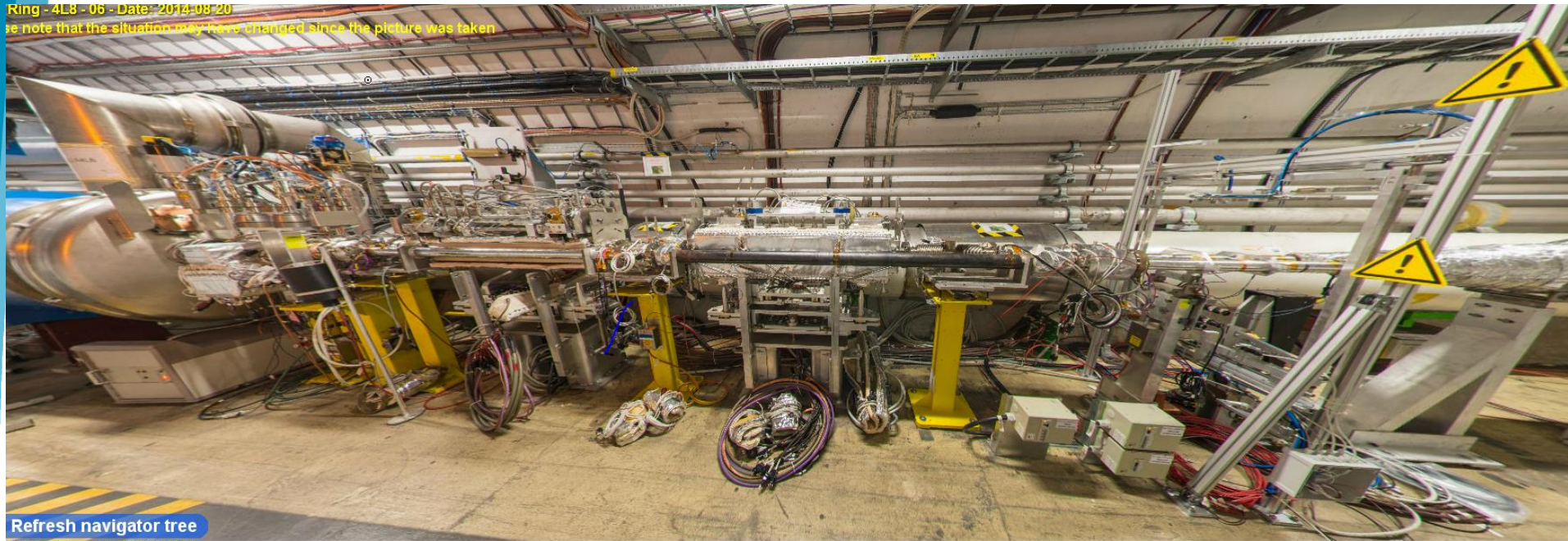




# 40<sup>th</sup> HL-LHC WP8 Bi-weekly meeting

28 June 2016

# Situation at P8



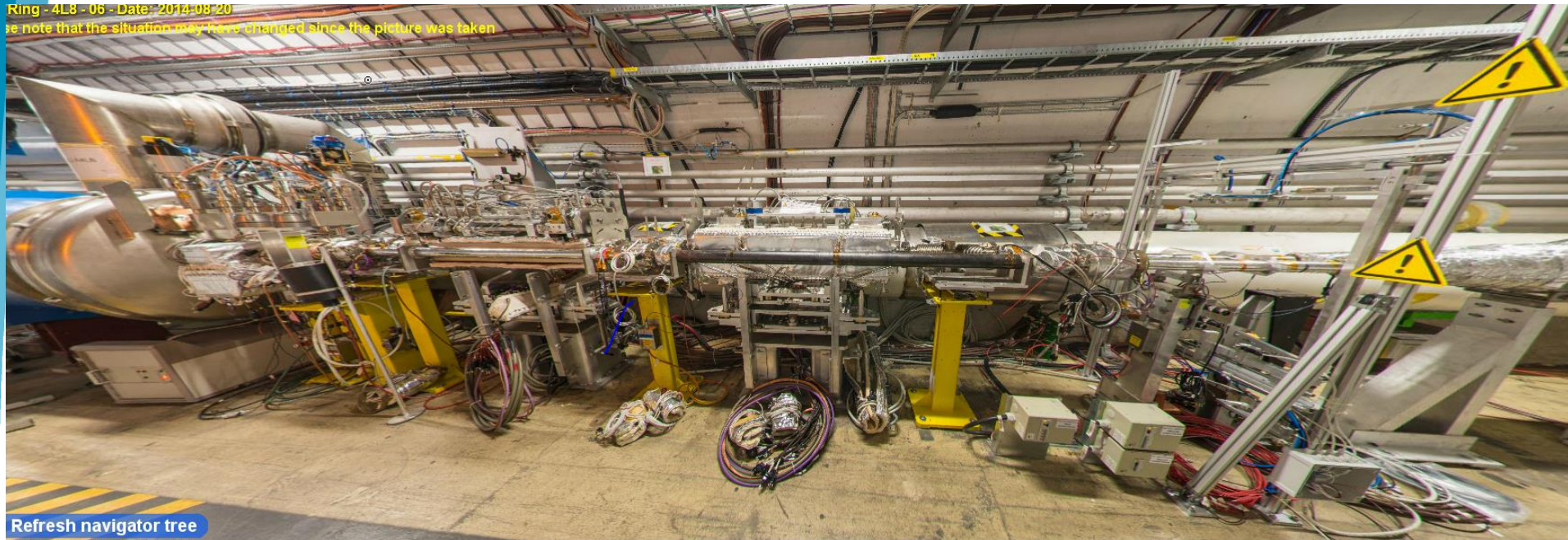
DMS Id : **454857** LAYOUT\_HALF\_CELL\_C2L8

\_0504-v0.plt

DMS Id : **1087307** LHC photo: 66.Q2.B1L8.jpg Version 1 Released

Target is to give protection for D2 @ Run 3 ( $2 \cdot 10^{33}$   
 $\text{cm}^{-2} \text{s}^{-1}$ ) having the lesser impact in P8 layout.

# Options to find space



DMS Id : 454857 LAYOUT HALF\_CELL C2L8

\_0504-v0.pt

DMS Id : 1087307 LHC photo: 66.Q2.B1L8.jpg Version 1 Released

1. Re-arrange equipment with no cut or displacement of the Y-chamber sector.
2. Cutting machine side of Y-chamber, keep position.
3. Displacing Y-chamber