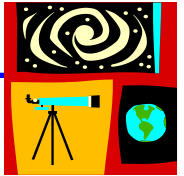


Water Tide in HLS

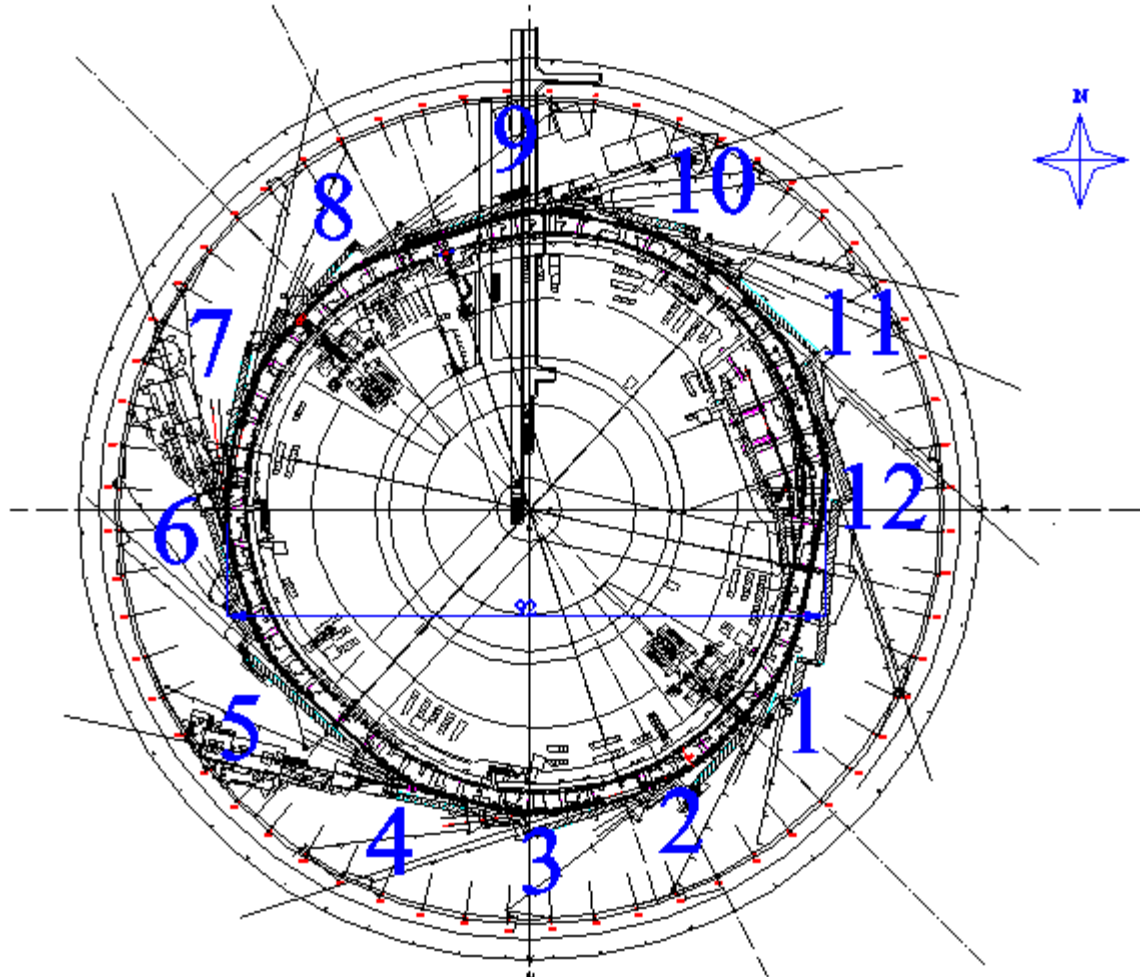
Fuqiang WEI

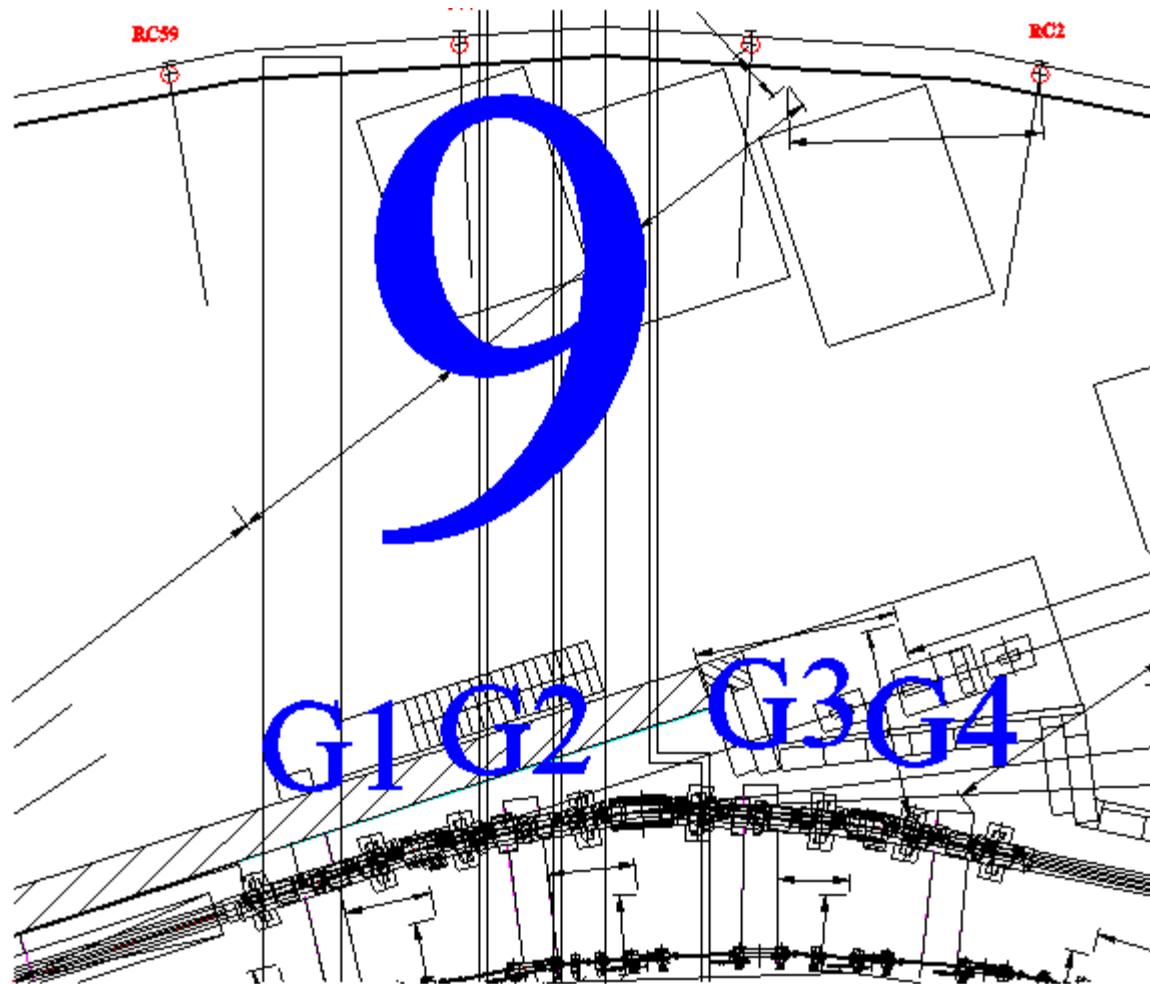
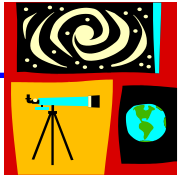
PSI XFEL

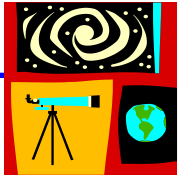
April 2-3, 2009

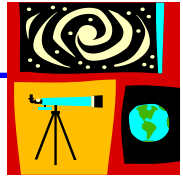


PSI SLS

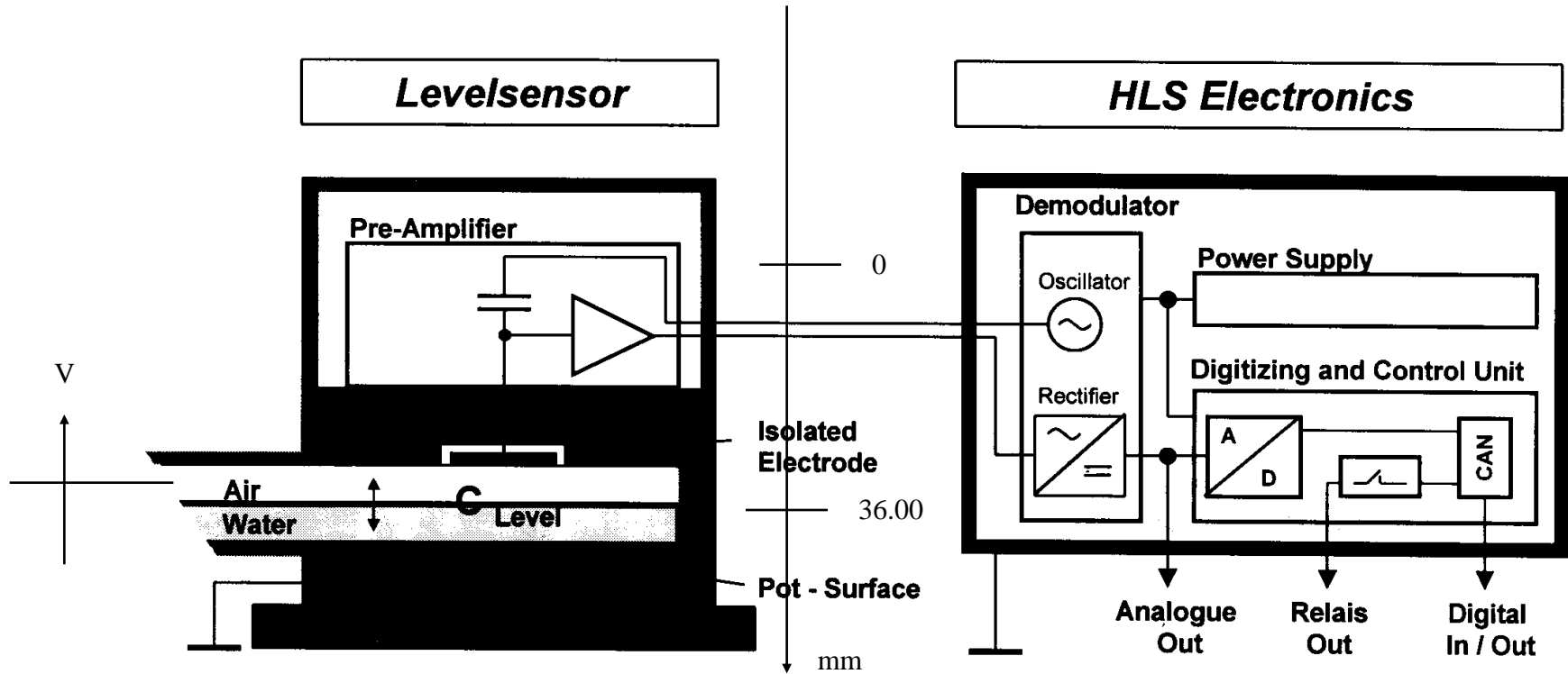








192 HLS for PSI SR

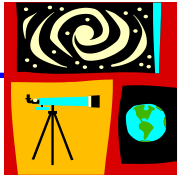


HLS1-01G1

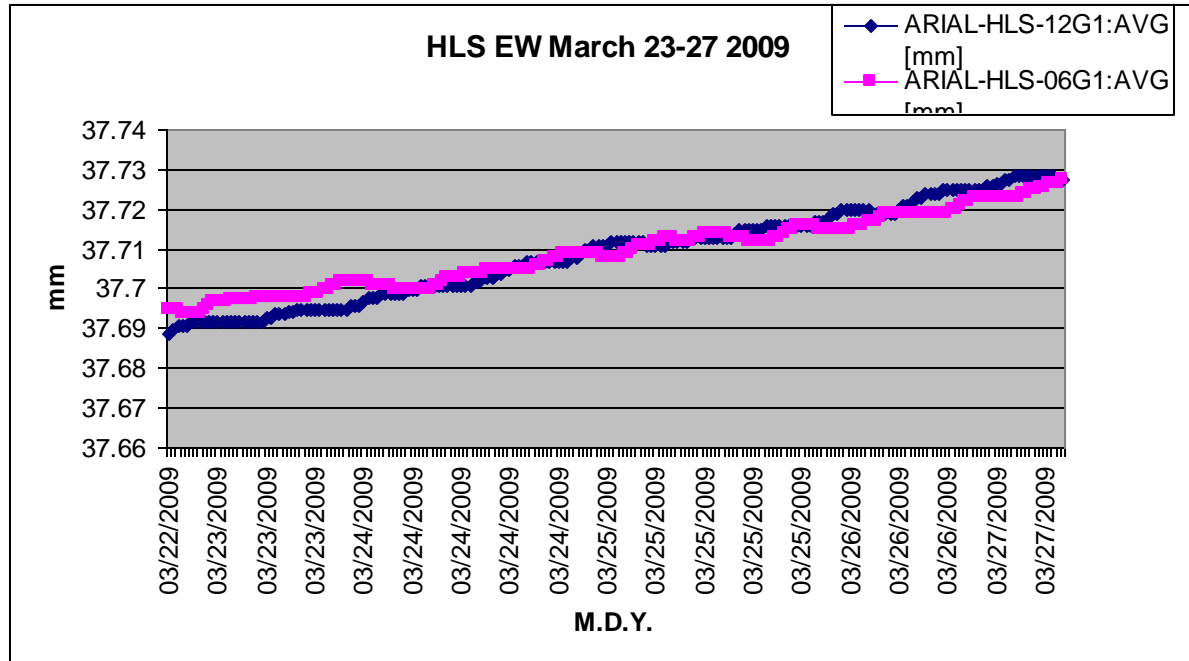
Sensor 1 (1-4)

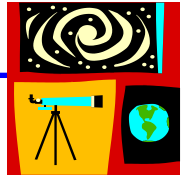
Section 1 (01-12)

Girder 1 (1-4)

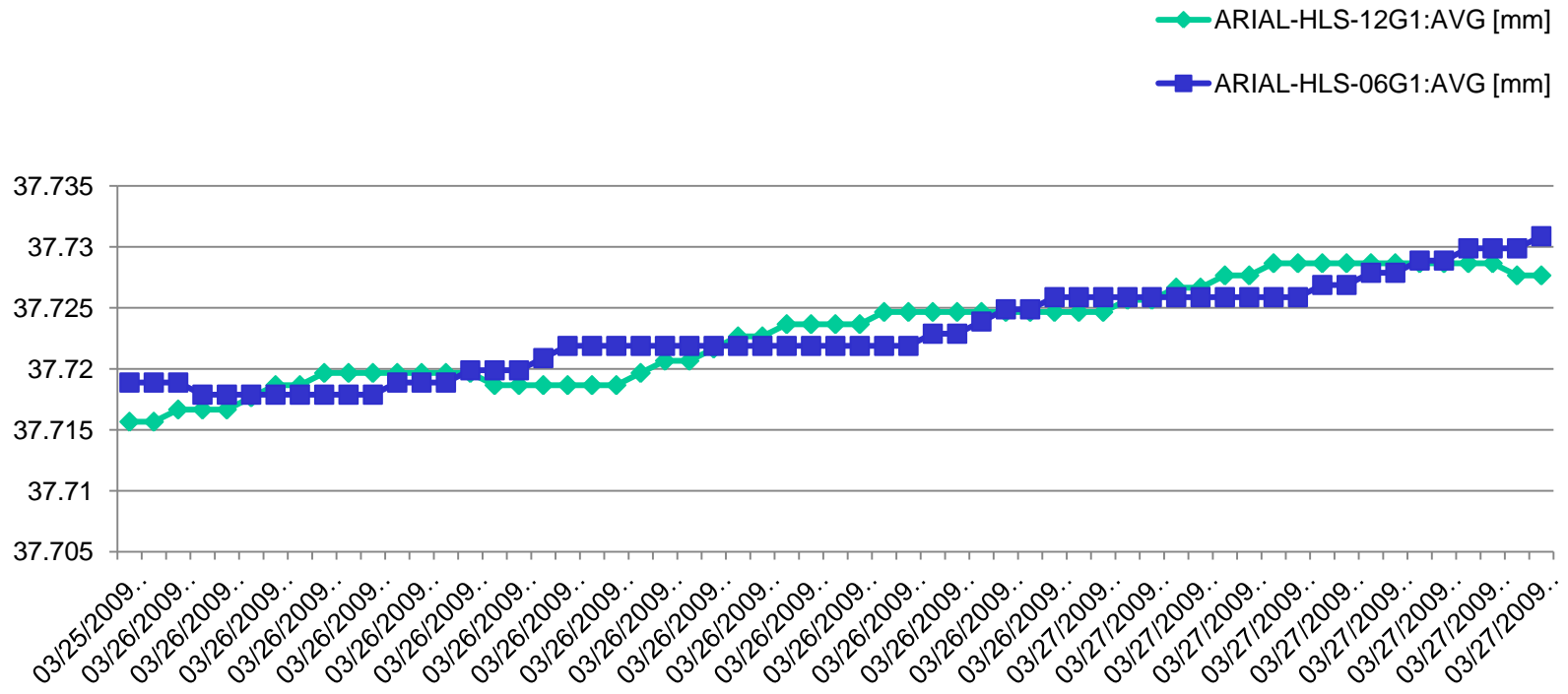


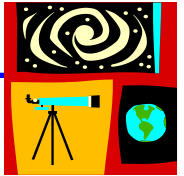
Short term (daily) accuracy May23-27,2009





Short term (daily) accuracy May0:00/26-10:00/27,2009 East/West

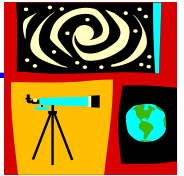




Conclusion

Phenomenon of water daily tide exists always in HLS

- It can be observed only when system accuracy high enough
- Height of the water tide is about 7 micros in the diameter 92 M ring system.
- It can be and must be deducted in a large scale HLS if HLS high accuracy is required



- END