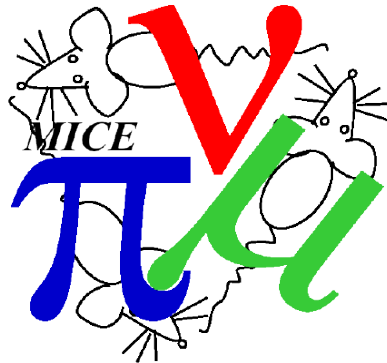




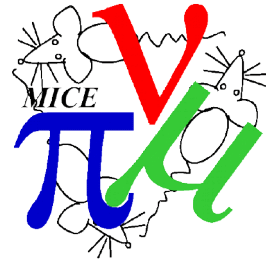
Global Track Fit



C. Rogers,
ASTeC Intense Beams Group
Rutherford Appleton Laboratory

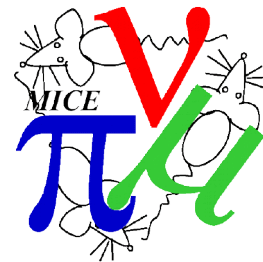


Global Track Fit



- Looking at track fit residuals for scifi and global
 - Overall residual
 - Bias from misalignment
- MC Study only pending recon in 2.5.0
 - Bug in scifi alignment software for version < 2.5.0
- First we use uniform 4T field in MC and recon
- Then we use the 07469 OPERA field map (incl PRY)
- Then tilt 07469 map
 - Run MC with rotation $(-0.0458+\theta_x, 0.0196+\theta_y, 0)$ degree
 - Run recon with rotation $(-0.0458+\theta_x, 0.0196+\theta_y, 0)$ degree
- Have not yet looked at current (mispowering)

Resolutions

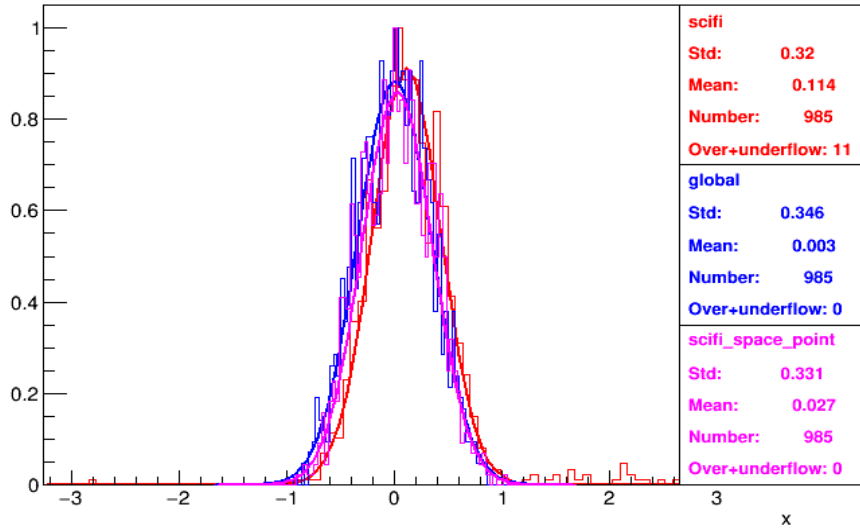


- Looking at track fit MC truth - recon for scifi and global
 - Overall resolution
 - Bias from misalignment
- MC Study only pending recon in MAUS v2.5.0
 - Bug in scifi alignment software for version < 2.5.0
- First we use uniform 4T field in MC and recon
- Then we use the 07469 OPERA field map (incl PRY)
- Then tilt 07469 map
 - Run MC with rotation $(-0.0458+\theta_x, 0.0196+\theta_y, 0)$ degree
 - Run recon with rotation $(-0.0458+\theta_x, 0.0196+\theta_y, 0)$ degree
- Then mispower 07469 map
 - Run MC with scale J
 - Run recon with scale factor 1
- Have not yet looked at misalignment – but don't expect any sensitivity from this study

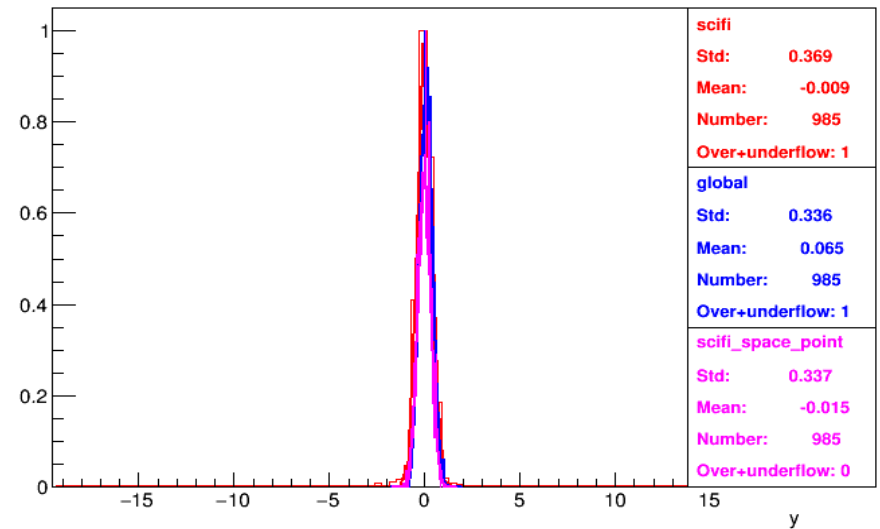
4T uniform field



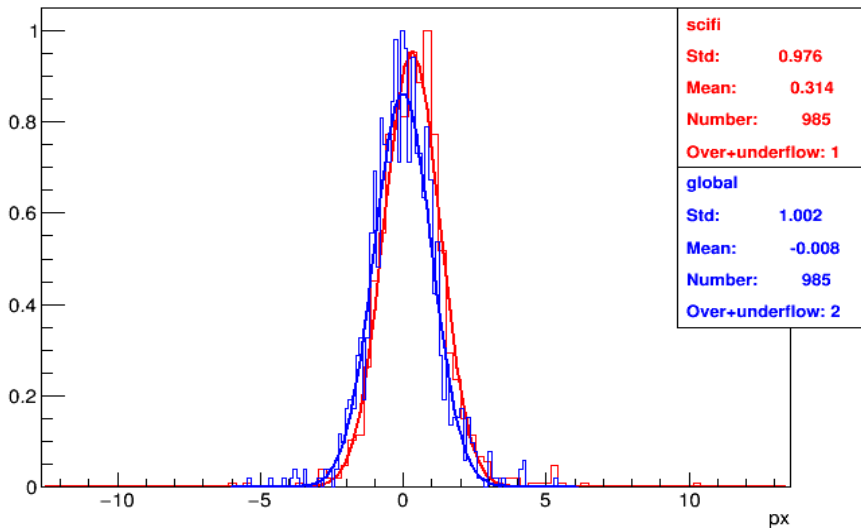
z = 15062.0 mm



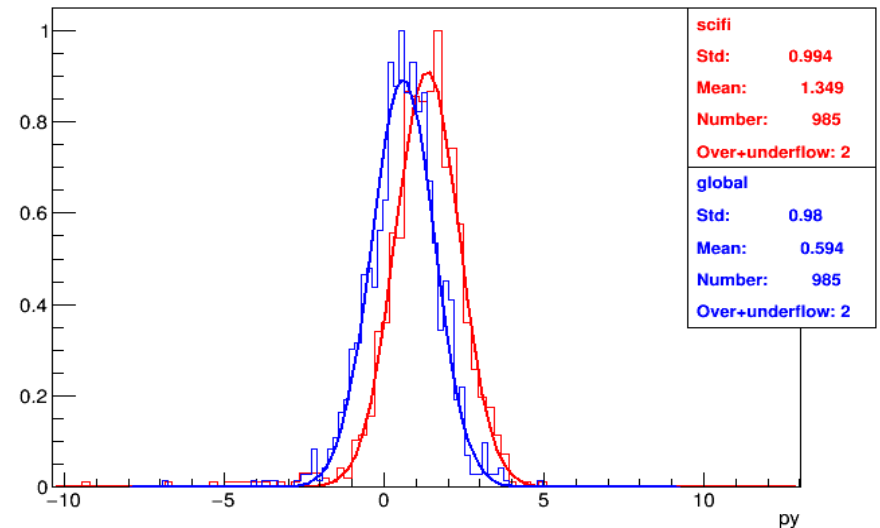
z = 15062.0 mm



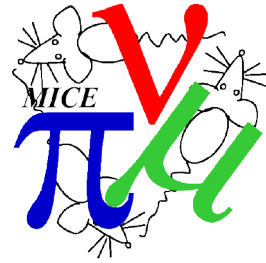
z = 15062.0 mm



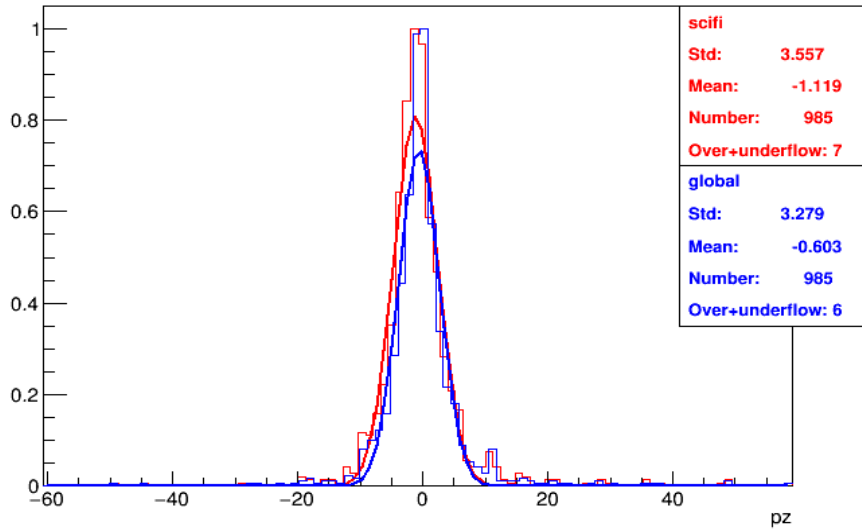
z = 15062.0 mm



4T uniform field (2)



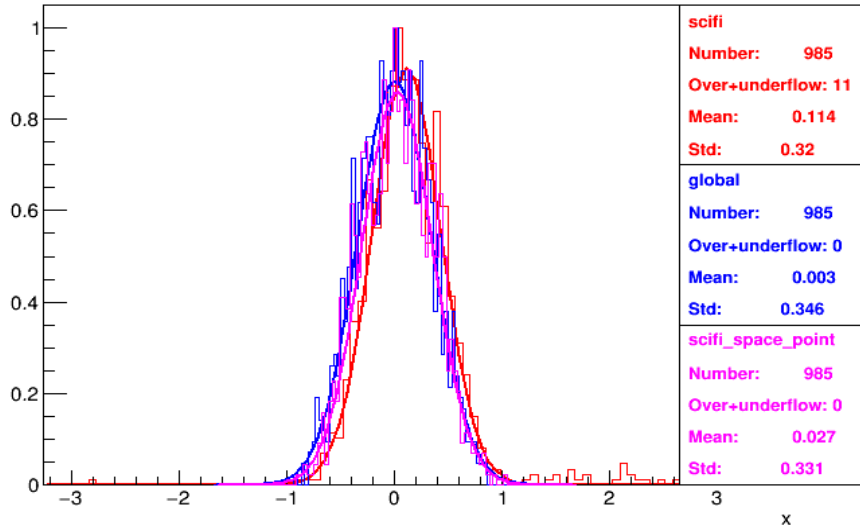
$z = 15062.0$ mm



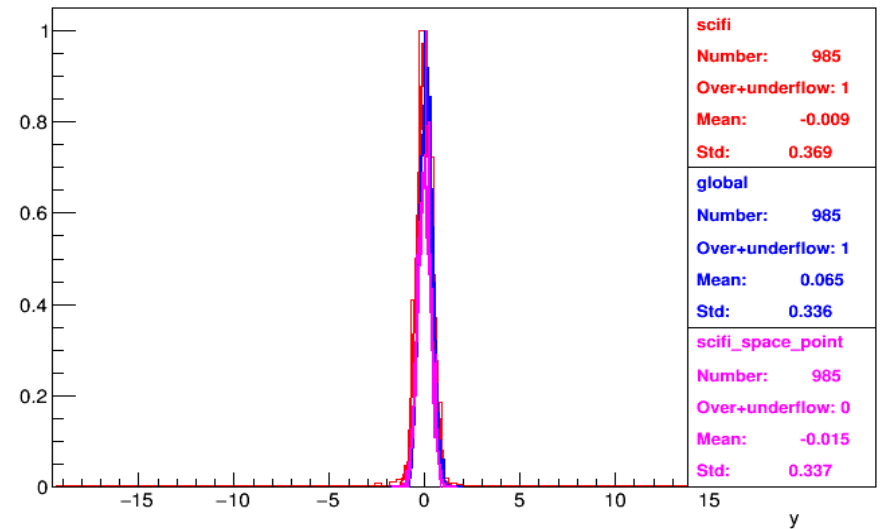
OPERA field map



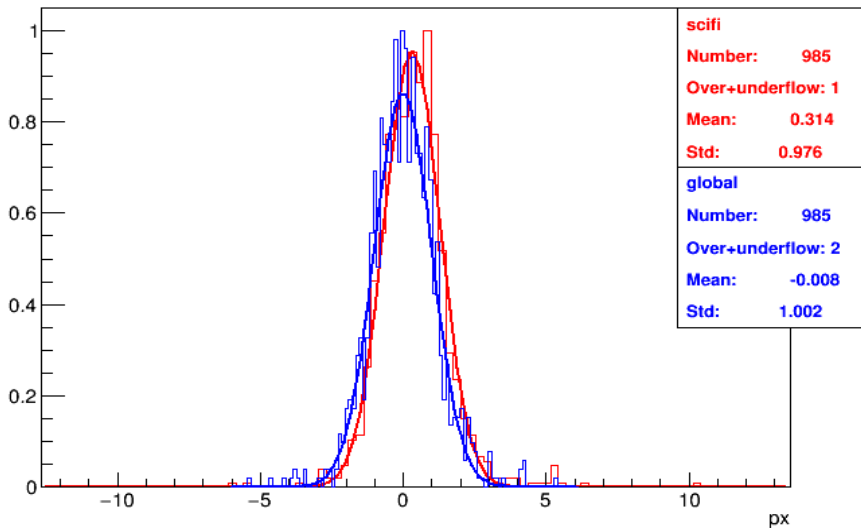
z = 15062.0 mm



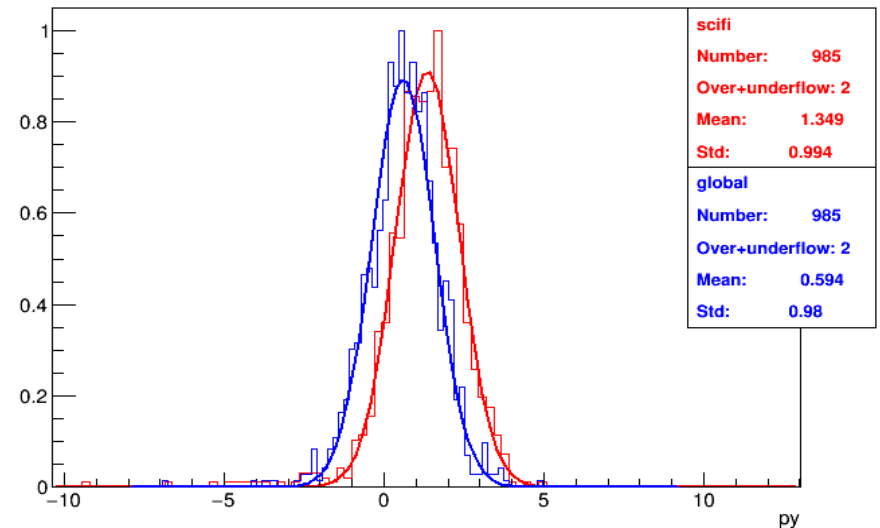
z = 15062.0 mm



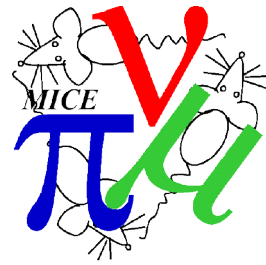
z = 15062.0 mm



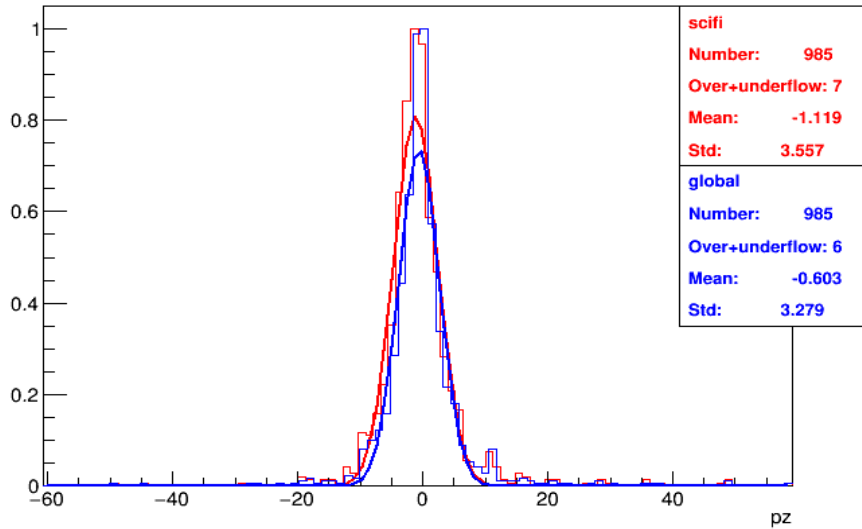
z = 15062.0 mm



4T uniform field (2)



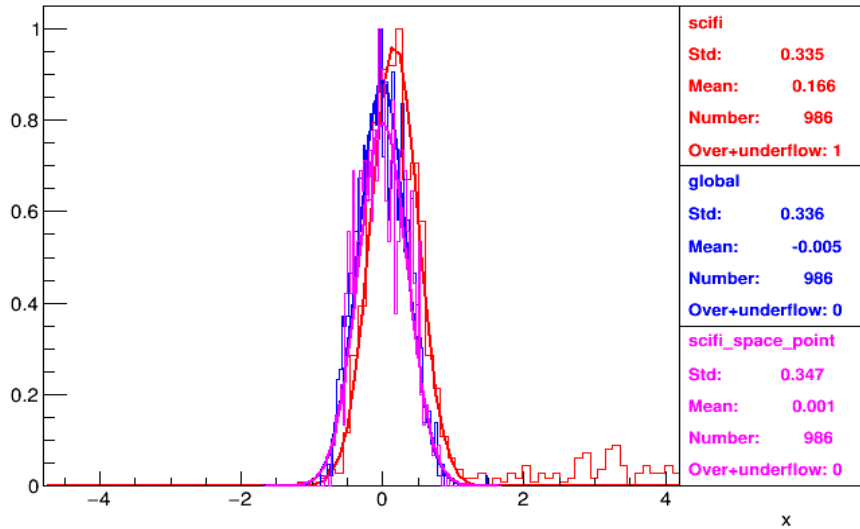
$z = 15062.0$ mm



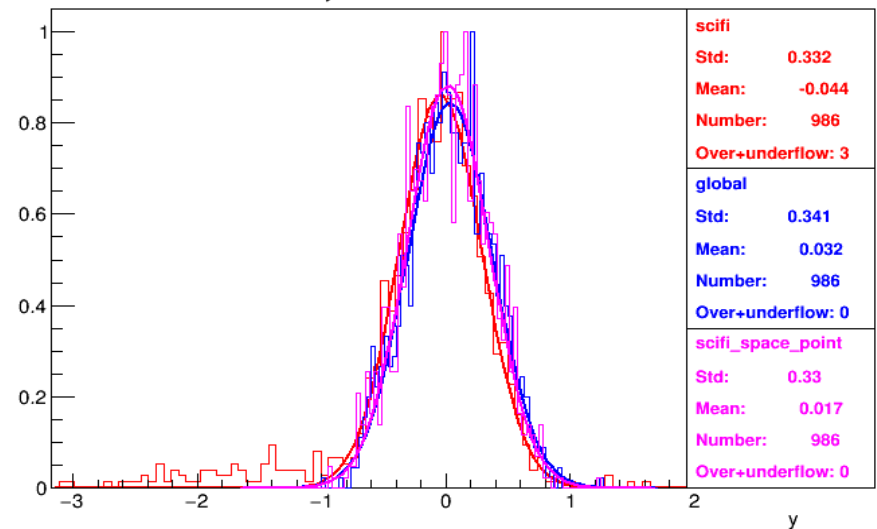
OPERA field map 0.1° Tilt



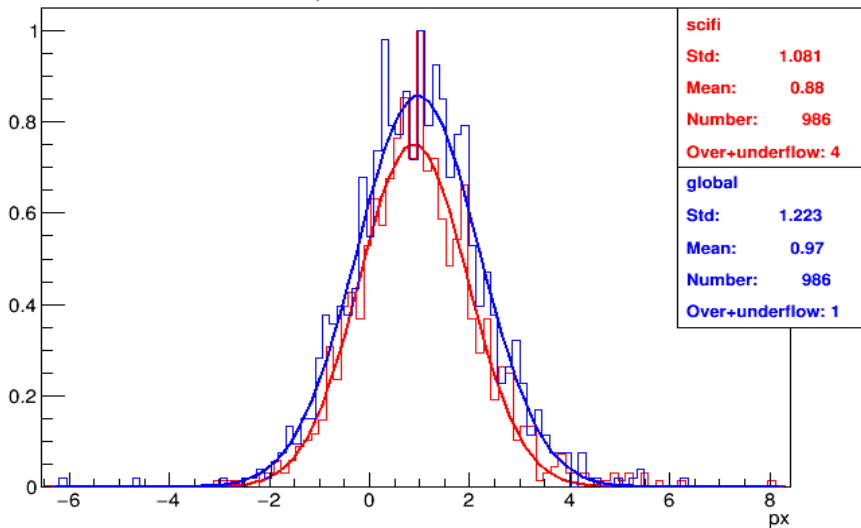
$\theta_x = 0.1^\circ \theta_y = 0.0^\circ z = 15062.0 \text{ mm}$



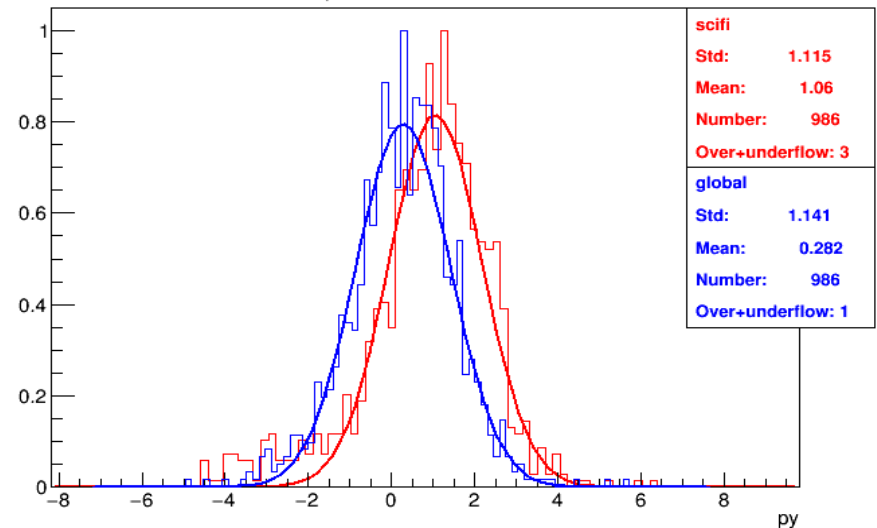
$\theta_x = 0.1^\circ \theta_y = 0.0^\circ z = 15062.0 \text{ mm}$



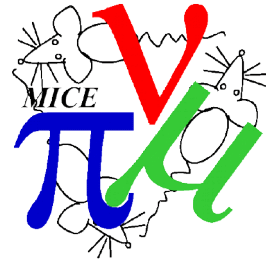
$\theta_x = 0.1^\circ \theta_y = 0.0^\circ z = 15062.0 \text{ mm}$



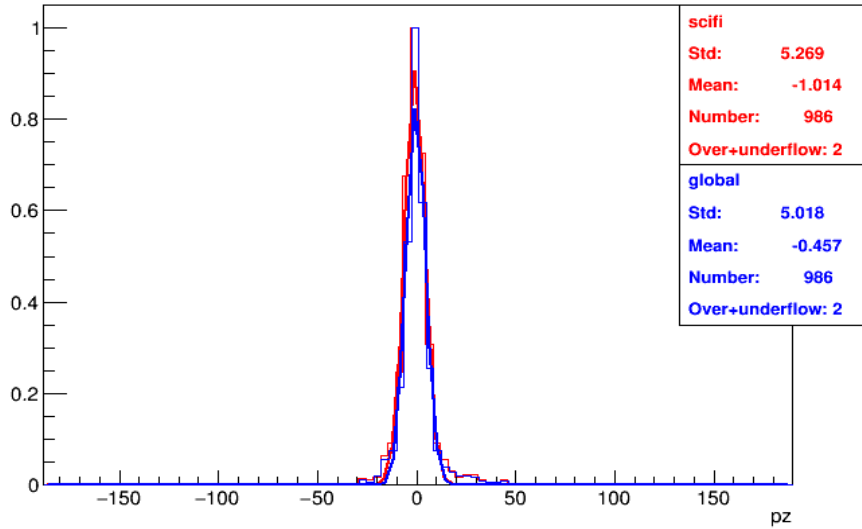
$\theta_x = 0.1^\circ \theta_y = 0.0^\circ z = 15062.0 \text{ mm}$



OPERA field map 0.1° Tilt (2)



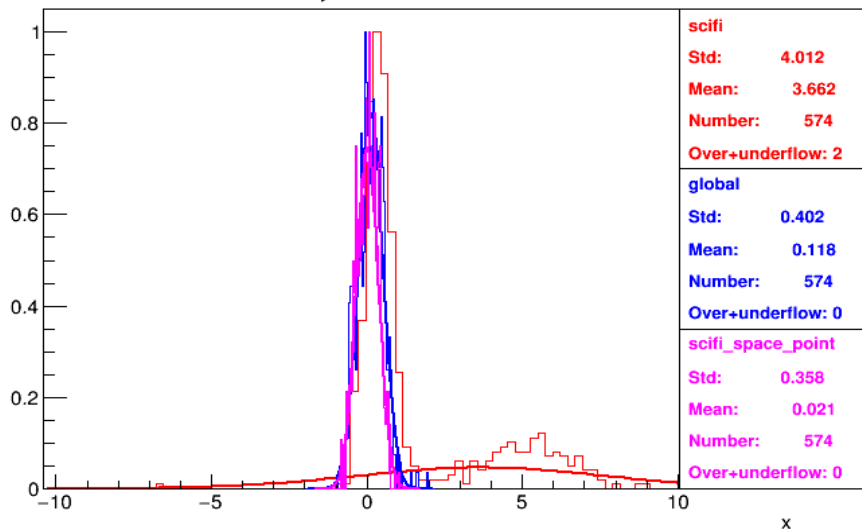
$\theta_x = 0.1^\circ$ $\theta_y = 0.0^\circ$ $z = 15062.0$ mm



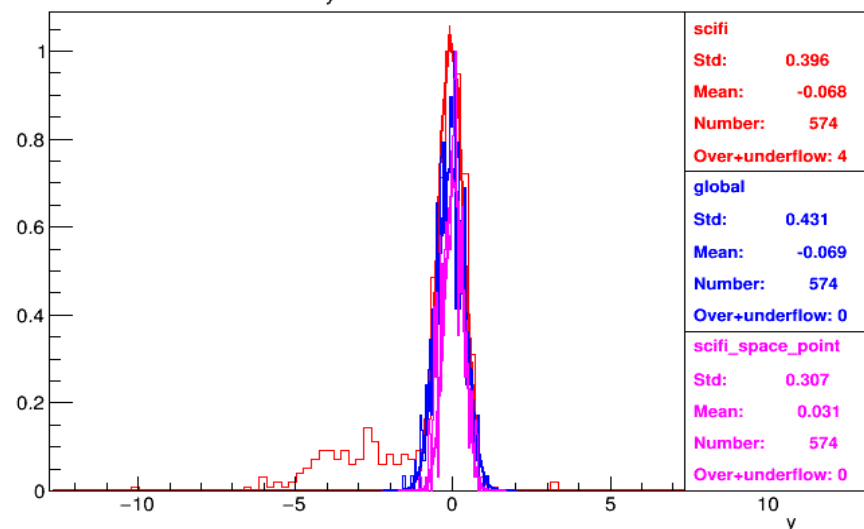
OPERA field map 0.5° Tilt



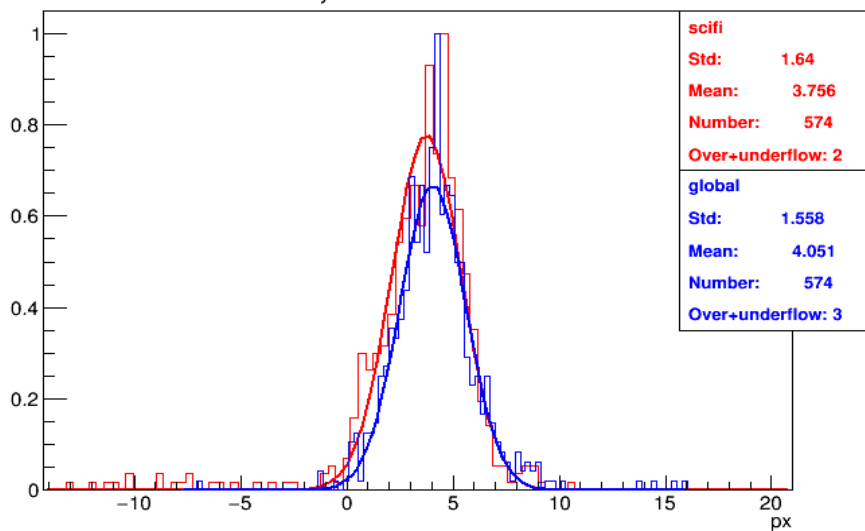
$\theta_x = 0.5^\circ \theta_y = 0.0^\circ z = 15062.0 \text{ mm}$



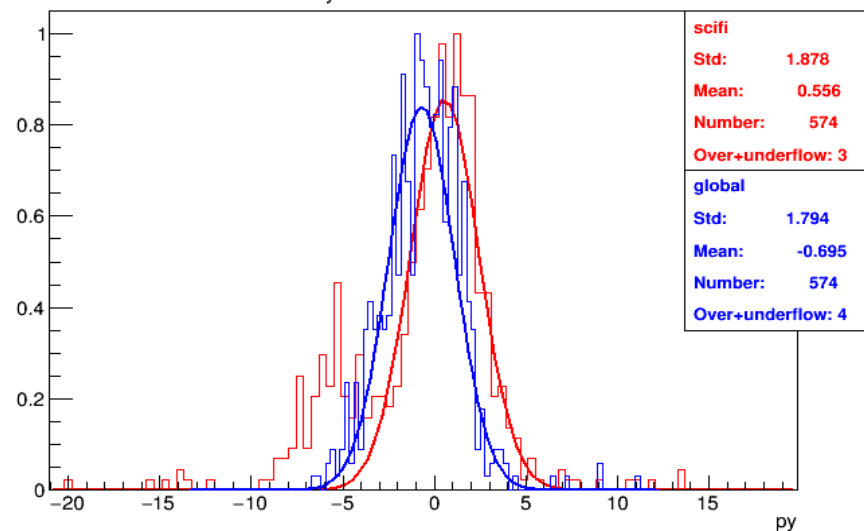
$\theta_x = 0.5^\circ \theta_y = 0.0^\circ z = 15062.0 \text{ mm}$



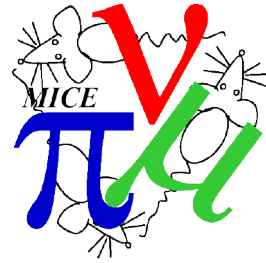
$\theta_x = 0.5^\circ \theta_y = 0.0^\circ z = 15062.0 \text{ mm}$



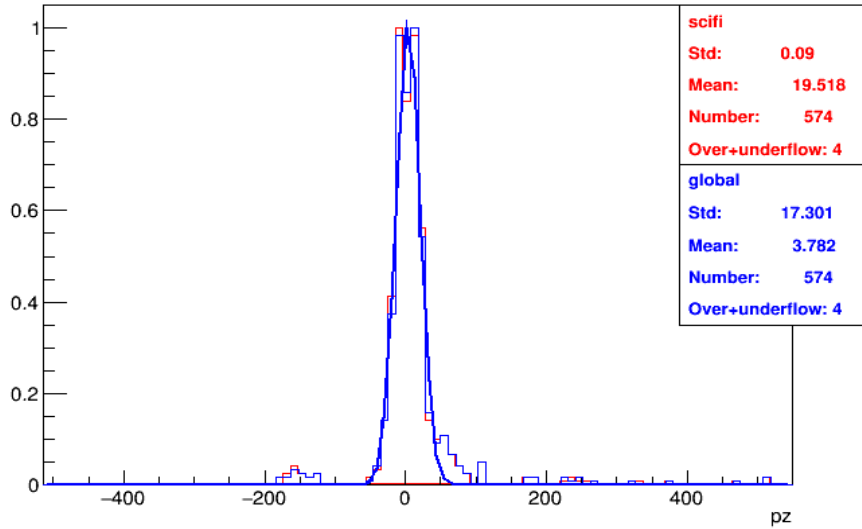
$\theta_x = 0.5^\circ \theta_y = 0.0^\circ z = 15062.0 \text{ mm}$



OPERA field map 0.5° Tilt (2)



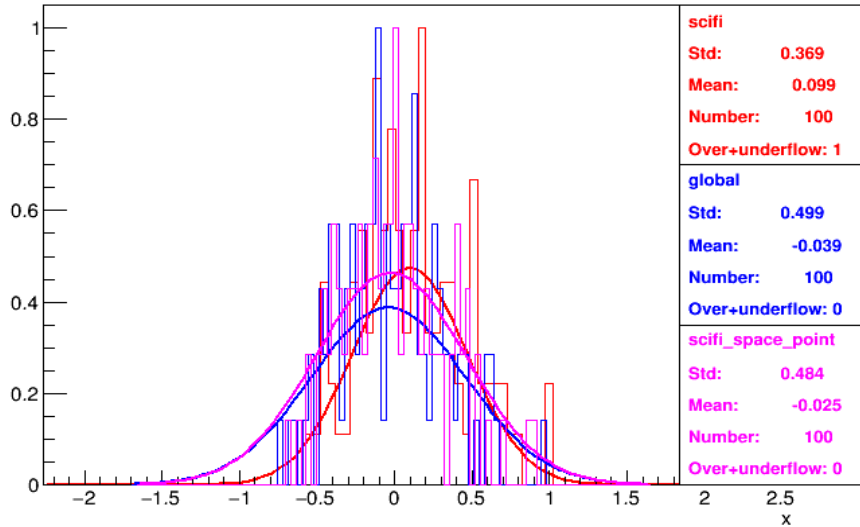
$\theta_x = 0.5^\circ$ $\theta_y = 0.0^\circ$ $z = 15062.0$ mm



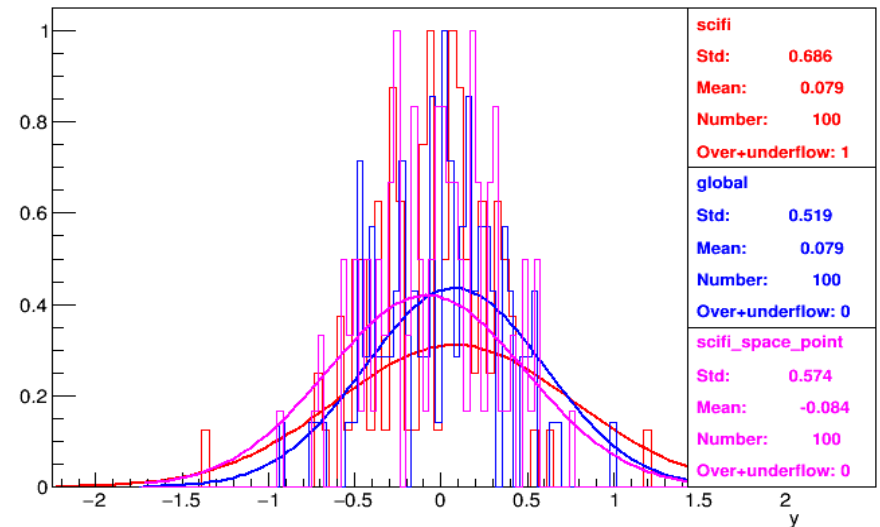
OPERA field map $J^* = 0.9$



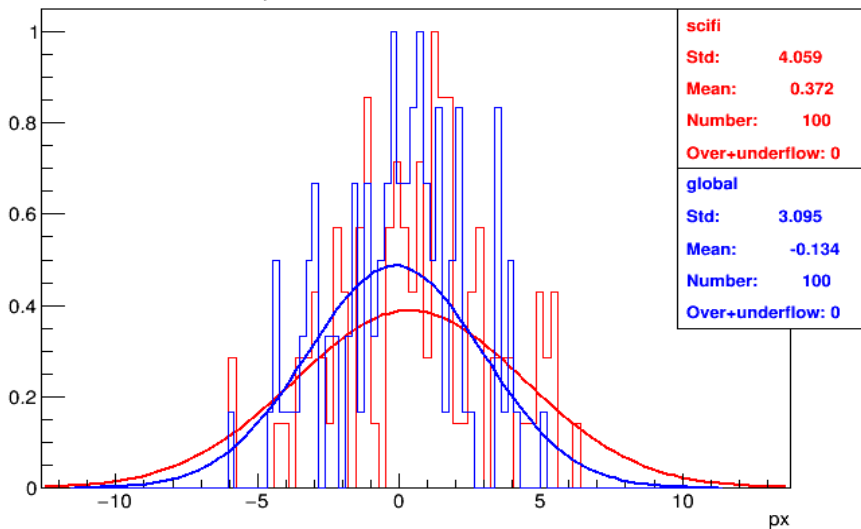
$\theta_x = 0.0^\circ \theta_y = 0.0^\circ \sim J = 0.9 z = 15062.0 \text{ mm}$



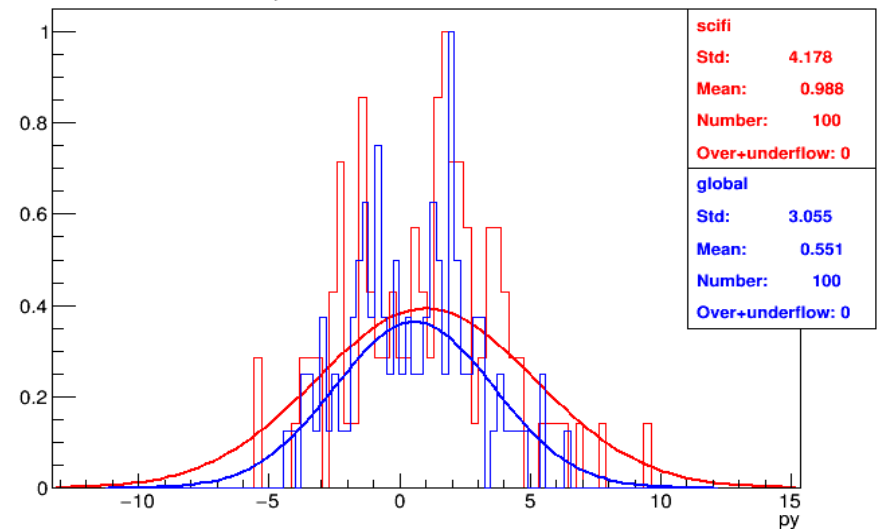
$\theta_x = 0.0^\circ \theta_y = 0.0^\circ \sim J = 0.9 z = 15062.0 \text{ mm}$



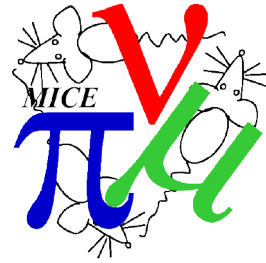
$\theta_x = 0.0^\circ \theta_y = 0.0^\circ \sim J = 0.9 z = 15062.0 \text{ mm}$



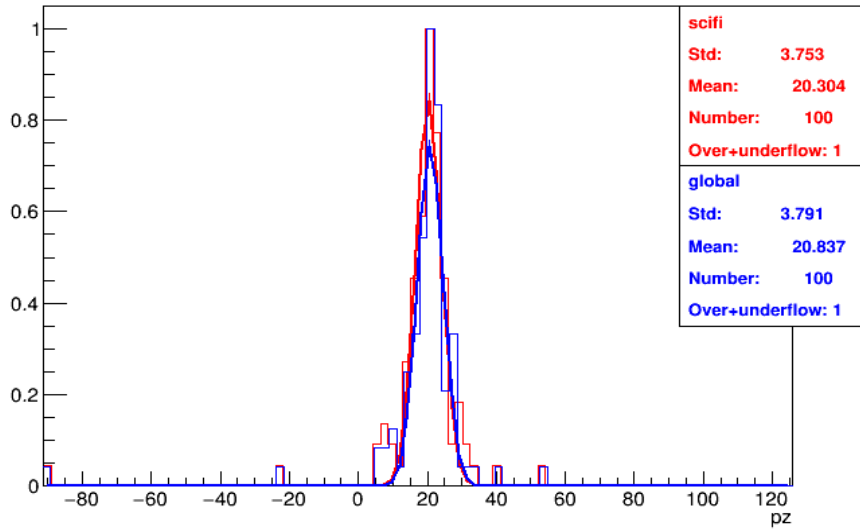
$\theta_x = 0.0^\circ \theta_y = 0.0^\circ \sim J = 0.9 z = 15062.0 \text{ mm}$



OPERA field map $J^* = 0.9$



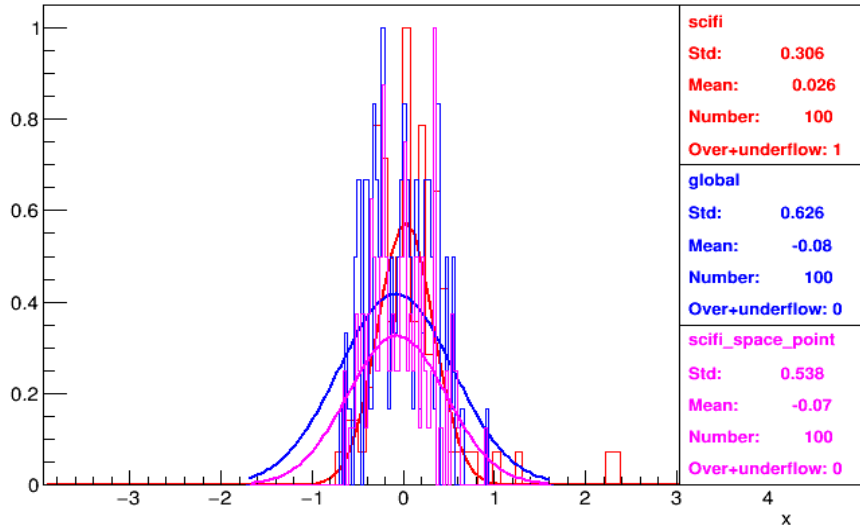
$\theta_x = 0.0^\circ$ $\theta_y = 0.0^\circ$ $\sim J = 0.9$ $z = 15062.0$ mm



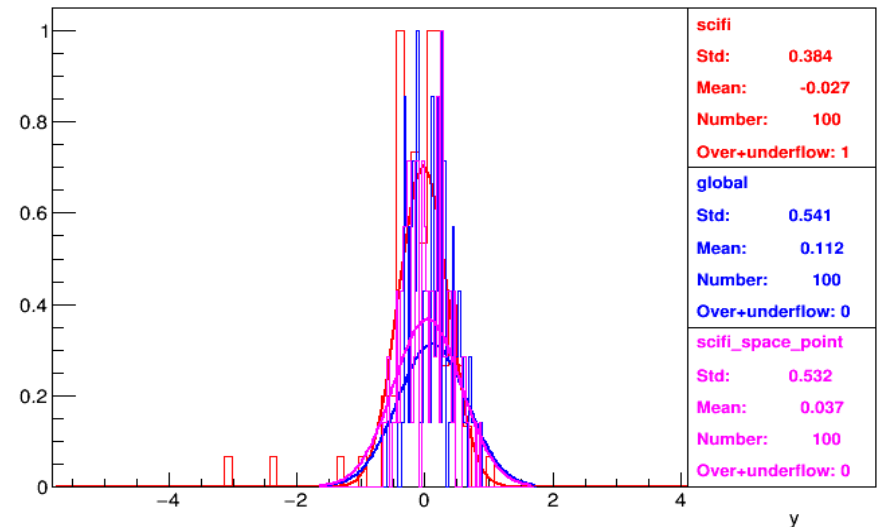
OPERA field map $J^* = 1.1$



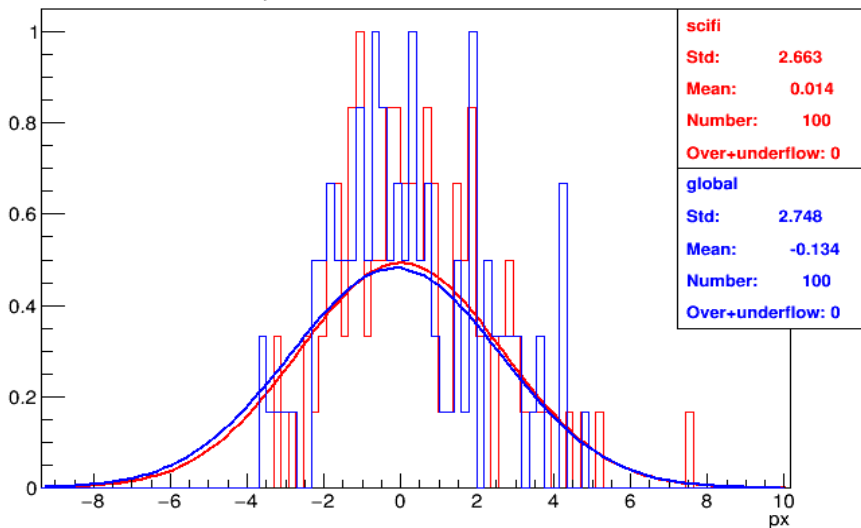
$\theta_x = 0.0^\circ \theta_y = 0.0^\circ \sim J = 1.1 z = 15062.0 \text{ mm}$



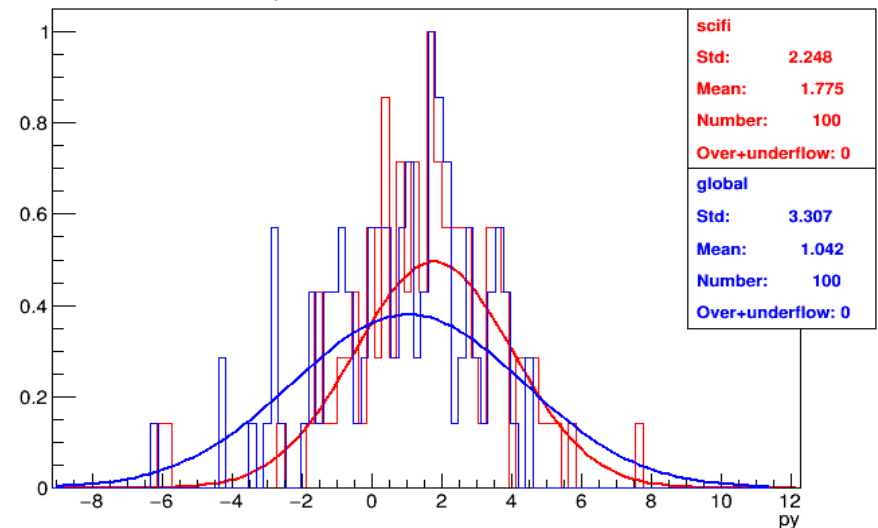
$\theta_x = 0.0^\circ \theta_y = 0.0^\circ \sim J = 1.1 z = 15062.0 \text{ mm}$



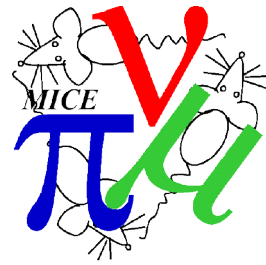
$\theta_x = 0.0^\circ \theta_y = 0.0^\circ \sim J = 1.1 z = 15062.0 \text{ mm}$



$\theta_x = 0.0^\circ \theta_y = 0.0^\circ \sim J = 1.1 z = 15062.0 \text{ mm}$



OPERA field map $J^* = 1.1$



$\theta_x = 0.0^\circ$ $\theta_y = 0.0^\circ$ $\sim J = 1.1$ $z = 15062.0$ mm

