

# Global Track Reconstruction

Jan Greis

*University of Warwick*

MICE Collaboration Meeting 45

*The Cosener's House, Abingdon*

# Global Track Reconstruction

28/07/2016

MICE CM45 – The Cosener's House, Abingdon

2/9

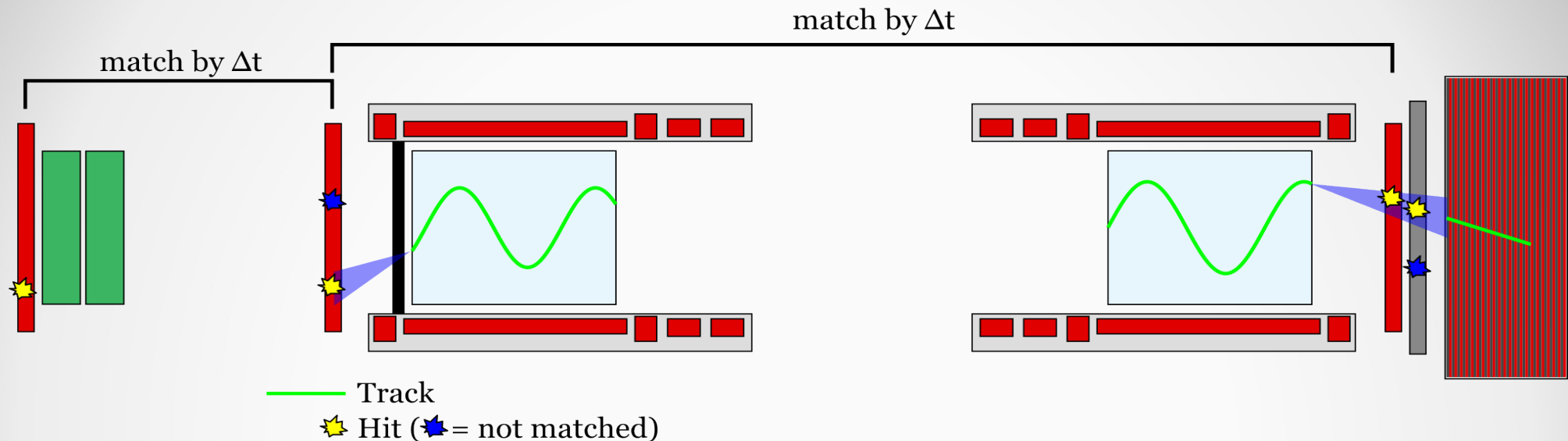
- Track Matching – Determine which detector hits belong to the same track and combine them so that PID (and later analysis) can be run on them
- Track Fitting – Improve the matched trackpoints using information from all detectors as well as provide the possibility of inter- and extrapolation to uninstrumented sections of the beamline

# Track Matching

28/07/2016

MICE CM45 – The Cosener's House, Abingdon

3/9



- Propagate track point between detectors
- Compare agreement between propagated and measured track point
- → Accept / Reject
- Different method ( $\Delta t$  based) for TOF0 and US/DS matching

# Track Matching

28/07/2016

MICE CM45 – The Cosener's House, Abingdon

4/9

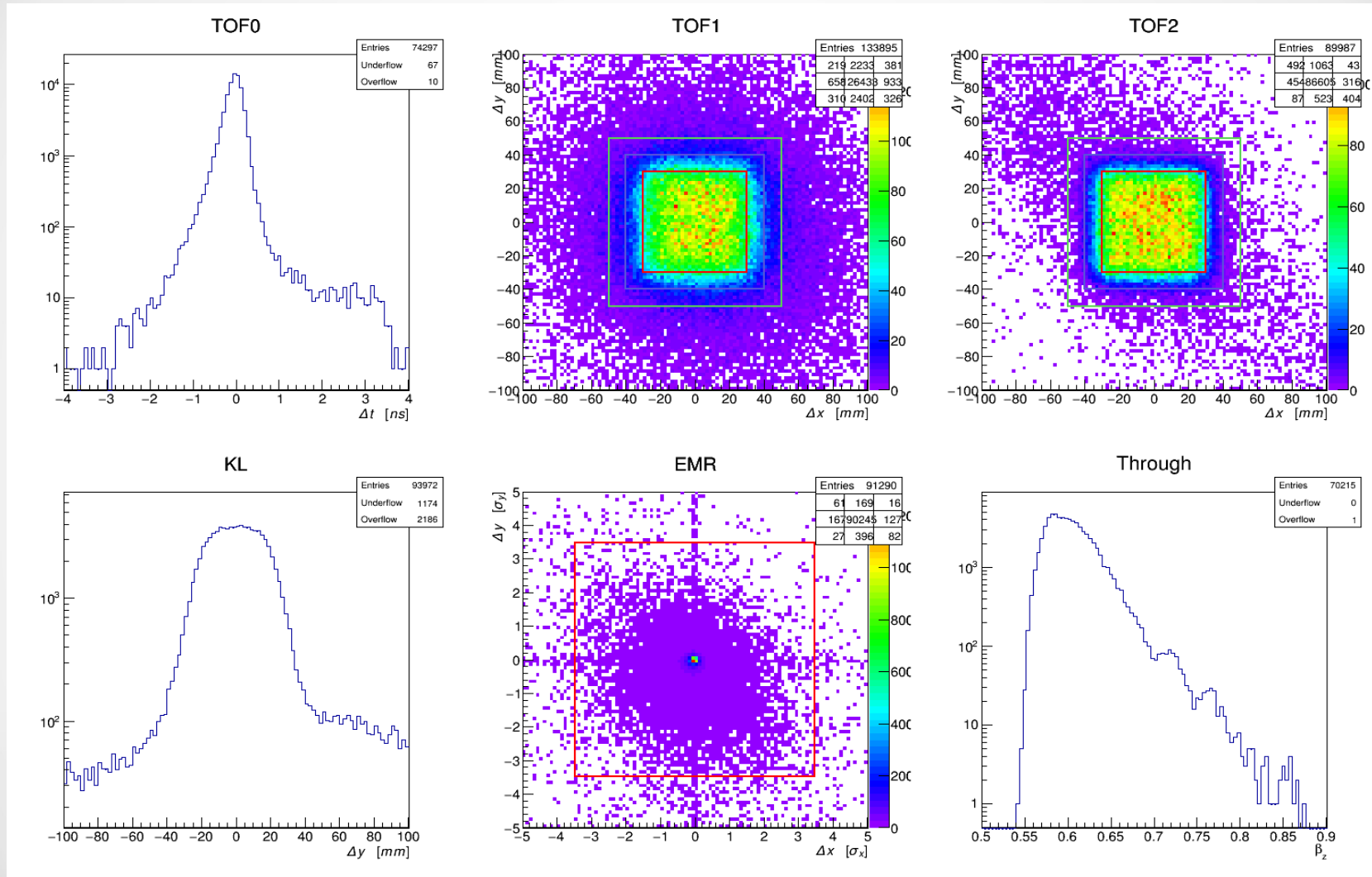
- Propagation requires mass and charge to be known, so track matching creates 3 or 6 tracks for each particle tagged with a PID hypothesis. Celeste's PID code then picks out the correct one

# MC Residuals (Geometry 115)

28/07/2016

MICE CM45 – The Cosener's House, Abingdon

5/9

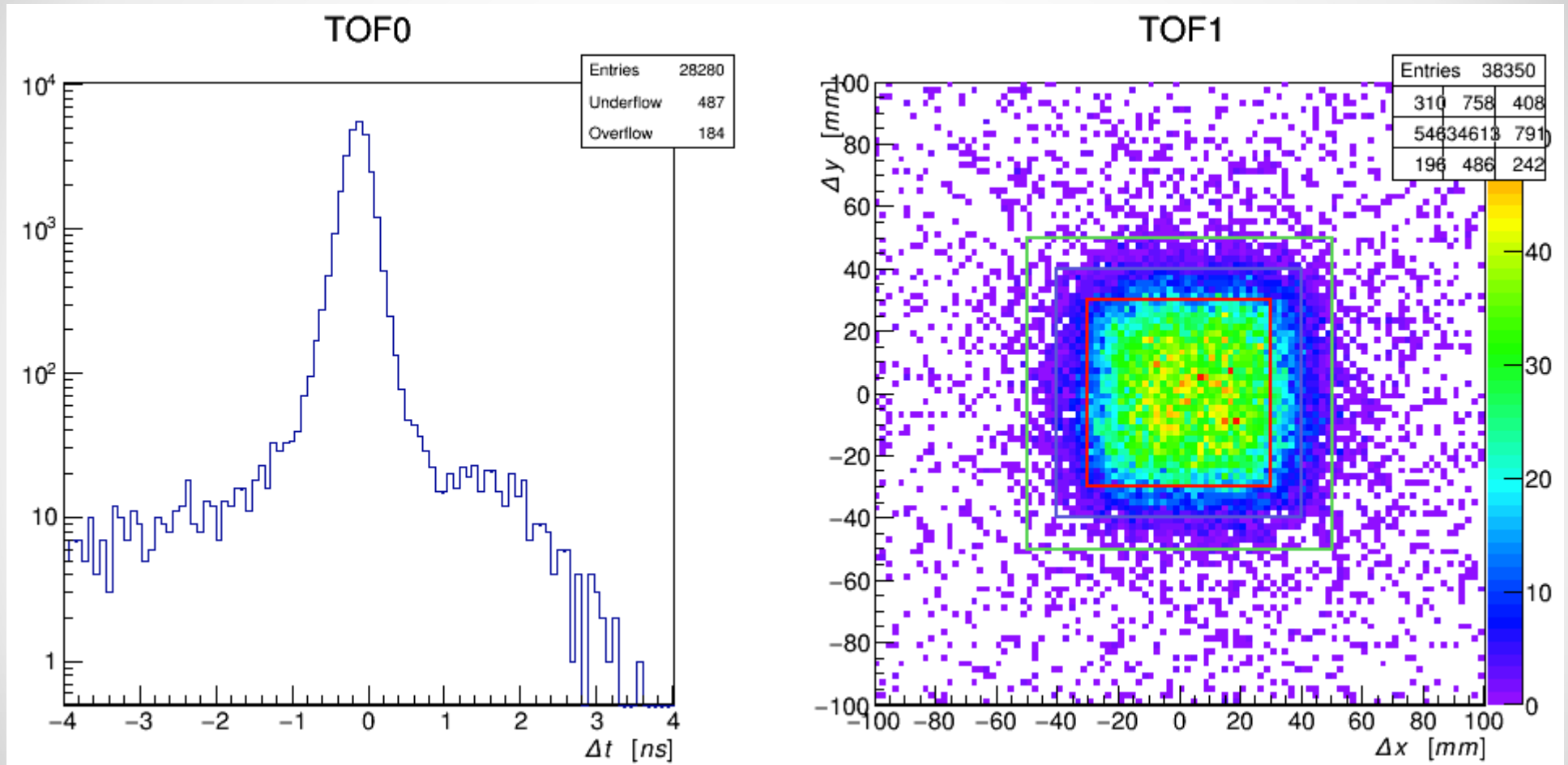


# Data Residuals (Run 7469)

28/07/2016

MICE CM45 – The Cosener's House, Abingdon

6/9



# Performance Improvements

28/07/2016

MICE CM45 – The Cosener's House, Abingdon

7/9

- No repeated propagation to different detectors on same side of cooling channel
- Only use propagation if any detector in the section (US or DS) has more than one space point, otherwise assume match
- Together, roughly an order of magnitude performance increase, as well as increase in efficiency

# TrefArray Issues

28/07/2016

MICE CM45 – The Cosener's House, Abingdon

8/9

- Discovered an issue with the ROOT data importer and/or the global data structure which results in a failure to import global tracks with trackpoints into MAUS. Work in progress, for the time being workaround on MICEmine.



# Future Work

28/07/2016

MICE CM45 – The Cosener's House, Abingdon

9/9

- Once TrefArray issue is fixed, include track matching and PID in standard unpacking script
- Track Fitting: Chris Rogers has been doing some work on this in the meantime, fit this into the current data flow and work from there.