

SOI - Short status from August Testbeam

S. Bugiel*, R. Dasgupta*, M. Idzik*

* AGH University of Science and Technology

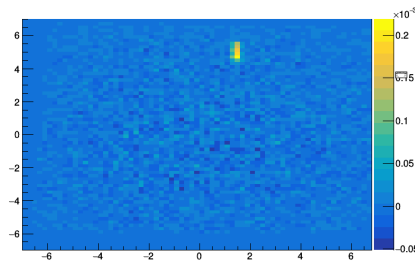
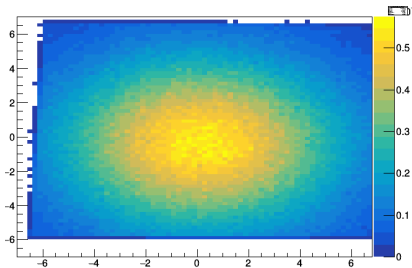
October 13, 2016

Status list

1 October 2016

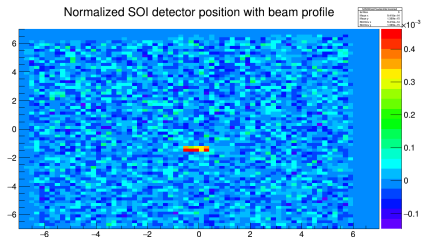
Position

Run 11368 - August2016



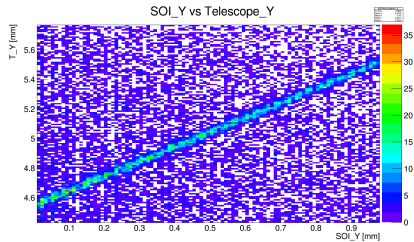
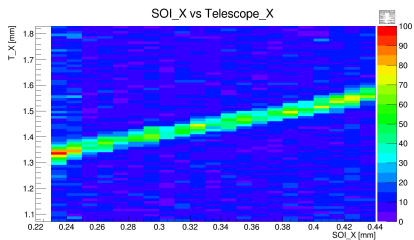
Run 8017 - June2016

We have different orientation in comparison to June testbeam.
(using: gear_April2016 - probably outdated)



Correlations

Run 11368 - August2016



Timestamp

Run	Timeoffset [ADC]	Timeoffset [s]
11367	-16279200	0.40698
11368	-17259542	0.43148
11369	-15682438	0.39206
11370	-16584409	0.41461

Timeoffset is different for each run...

Is there a possibility to estimate timeoffset for 1-2 spils?

Run 11368

~ 8 spils → -16279200 (0.40698 s)

~ 1 spil → -16277107 (0.40693 s) Difference: 2093 (0.00005 s) →

Merging data is possible for very short runs.

Analysis is ongoing.